



BIRMINGHAM CITY  
University

# STUDY ABROAD

## 2017/18

### INCOMING STUDENTS







# CONTENTS

4	Welcome
6	Studying in Birmingham
8	Studying at Birmingham City University
10	Accommodation
12	Arts, Design and Media
16	Business, Law and Social Sciences
20	Computing, Engineering and the Built Environment
24	Health, Education and Life Sciences
28	Entry requirements
29	Fees
30	How to apply



# WELCOME

Birmingham City University is located just over an hour from London, in the UK's second largest city. We offer our students a friendly study environment and access to facilities that are among the very best in the country, due to our recent £260 million investment in our campus.

## BENEFITS OF STUDYING WITH US:

Experiencing the UK-style teaching and learning

Earning university credits

Enhancing your career prospects

Exploring Birmingham and the rest of the UK

Raising your international awareness skills

Making lifelong friends from around the world

**BY COMING TO BIRMINGHAM CITY UNIVERSITY ON A STUDY ABROAD PROGRAMME YOU'LL BE ABLE TO EMBRACE A ONCE-IN-A-LIFETIME OPPORTUNITY.**

We've built strong partnerships with both students and industry professionals to offer an inspirational learning environment. We've helped to enrich the lives of leading architects, designers, lawyers, engineers, healthcare professionals, musicians and many more. We offer a wide range of programmes to Study Abroad students for Year 1, 2 and 3 entry across all Faculties.

Our innovative teaching methods, ground-breaking research and industry collaborations are backed by almost 40 professional accreditations. Providing you with an education that not only works in the classroom, but in the real world for when you graduate.

You'll share your university with 24,000 students from over 80 different countries. We ensure that everyone feels right at home here in Birmingham with accommodation options for international students, a meet and greet service at Birmingham Airport and our Student Affairs team make it a priority for you to move countries as easy as possible.


By coming to Birmingham City University on a study abroad programme you'll be able to embrace a once-in-a-lifetime opportunity.

We look forward to seeing you at Birmingham City University very soon!

The Go Abroad Team  
Birmingham City University








# Top 10

Birmingham was selected as one of the top 10 destinations in the world to visit in 2015 by travel publisher Rough Guides.


# STUDYING IN BIRMINGHAM

Birmingham is the UK's second largest city, with a population of 70,500 students. Famous for: the Bullring shopping centre, the home of Cadbury's chocolate, car manufacturing, science and industry.


## AT A GLANCE




160 shops make up the iconic Bullring shopping centre




24 million visitors from around the world every year



Over 100 of our famous balti houses in the city



25 million pass through Birmingham New Street annually (businessbirmingham).



The most popular destination for people moving out of London (BBC, 2016)

THERE IS PLENTY TO DO IN BIRMINGHAM TO KEEP YOURSELF BUSY. IT REMAINS ONE OF ENGLAND'S MOST VISITED PLACES TO SHOP, WITH NEARLY £2 BILLION SPENT EACH YEAR\*



\*Visit Birmingham



## RELAXING

If you want to get out and about, the city has over 8,000 acres of park and open space, making it one of the UK's greenest cities.

## EATING

There are numerous cutting-edge restaurants and pubs to sample. Birmingham has over 100 balti houses together with a flourishing street food scene, centred on the popular Digbeth Dining Club.



## CULTURE

With a world-class symphony orchestra, royal ballet company and theatres, Birmingham has some of the finest contemporary arts venues in the country, while one of the city's most exciting facilities is the state-of-the-art, £188 million Library of Birmingham.

Birmingham Royal Ballet in David Bintley's *Faster*; photo: Bill Cooper



# THE CITY IS YOUR CAMPUS

## FACILITIES INCLUDE:

- Print, textiles, wood, ceramics and glass workshops
- Photography studios and darkrooms
- Four industry-standard TV studios
- Green screen MILO studio
- Radio studios and editing suites.
- Library with access to 62 million printed and online resources
- Students' Union
- Dedicated IT and student services support
- Curzon Print Centre, including Kodak self-service booth
- Ten specialist drama studios complete with acoustic panelling and sprung floors
- Noise and vibration cells
- Robotic laboratory
- Recording facilities and vintage mixing desk
- Law courts
- City Trading Room



**WE ARE INVESTING  
£260 MILLION ACROSS  
OUR BUILDINGS AND  
FACILITIES, TO GIVE YOU  
THE VERY BEST LEARNING  
ENVIRONMENT TO SHAPE  
YOUR EXPERIENCE**

This flagship campus at the heart of Birmingham's fast-developing Eastside district, and just a short walk from the city centre, is where most students on Design, Media, Acting, Engineering, Computing, Built Environment, Law, Social Sciences, Business and English courses are based.

The campus also features library, IT and student support facilities, together with a base for our Students' Union, which incorporates the Grade II listed Eagle and Ball pub.

Our facilities are located alongside Eastside City Park – the first new urban park in Birmingham for over 130 years, which provides a superb space for relaxing in summer as well as a venue for events and activities.



# A PLACE TO CALL HOME



## Life

All of our halls of residence across the city offer shared kitchen and living areas, laundry facilities, free wi-fi and common rooms.



If you are leaving home for the first time, what could be more exciting than the independence and freedom of your own place?

Living in halls is a great way to make new friends as you settle into the city.

- Over 2,000 rooms
- A safe and secure home
- All our halls have CCTV coverage and 24-hour security patrols
- Easily accessible - close to public transport links
- Shared kitchen and living areas, laundry facilities, free wi-fi and common rooms

Please visit [www.bcu.ac.uk/international/accommodation](http://www.bcu.ac.uk/international/accommodation) for more information.

\* Accommodation images are representative only.



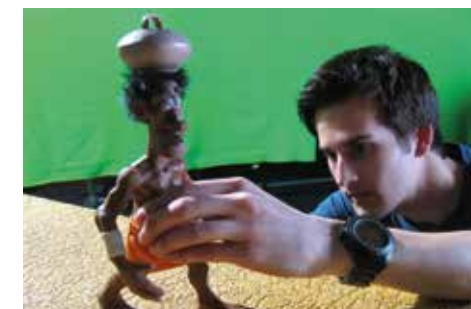
# ARTS, DESIGN AND MEDIA

Our internationally renowned arts training provision includes a specialist music conservatoire and drama school, a leading provider of media training, and the UK's largest regional centre for art and design education, incorporating Europe's biggest jewellery school.



The faculty incorporates Birmingham Institute of Art and Design, an internationally renowned centre for creative education with a history dating back to 1843 and one of the UK's leading providers of talented professionals to the cultural and creative industries.

**OUR LINKS WITH INDUSTRY INCLUDE ROLEX, SWATCH, SAATCHI AND SAATCHI, GOLDSMITH, THE BBC, THE BRITS, AXIS DESIGN ARCHITECTS LTD, SONY COMPUTER ENTERTAINMENT EUROPE, SEGA AND ROCKSTAR NORTH.**





# ARTS, DESIGN AND MEDIA COURSES



## LEVEL 4: Year 1

We have recently reviewed our curriculum across Birmingham City University. If you wish to be considered for Level 4 entry, please visit our website to view a list of our current courses and contact us to check availability.

## LEVEL 5 ONLY Year 2

September and January entry:

BA (Hons)  
**Media and Communication**  
Various routes available

## LEVEL 5 AND 6 Year 2 and 3:

September and January entry:

BA (Hons)  
**Art and Design**  
BA (Hons)  
**Creative Writing with English**

BA (Hons)  
**English**

BA (Hons)  
**Fashion Business and Promotion**

BA (Hons)  
**Fashion Design**

BA (Hons)  
**Fashion Design with Fashion Accessories**

BA (Hons)  
**Fashion Design with Fashion Communication**

BA (Hons)  
**Fashion Design with Garment Technology**

BA (Hons)  
**Fine Art**

BA (Hons)  
**Furniture and Lifestyle Products**

BA (Hons)  
**Product Design**

BA (Hons)  
**Textile Design**  
Various routes available

BA (Hons)  
**Visual Communication**  
Various routes available



\*Courses are subject to change and availability.



# BUSINESS, LAW AND SOCIAL SCIENCES

## ACCREDITATIONS INCLUDE:

- Association of Chartered Certified Accountants (ACCA)
- Chartered Institute of Management Accountants (CIMA)
- Chartered Institute of Personnel and Development (CIPD)
- Chartered Management Institute (CMI)
- Chartered Institute of Marketing (CIM)
- Chartered Institute of Internal Auditors (IIA)
- The British Psychological Society (BPS)
- Solicitors Regulation Authority and Bar Standards Board



The Faculty of Business, Law and Social Sciences is a globally oriented faculty, drawing on theories and practice from around the globe to inform our learning environment.

Birmingham City Business School is a leading, professionally oriented, international business school focused on connecting you with every aspect of the world of business and innovation. While we have a unique relationship with the extraordinary city we're rooted in, renowned for its industry and commerce, our courses are designed to meet the needs of businesses across the globe.

Birmingham City School of Law has been at the forefront of innovative law teaching for more than 40 years, specialising in social justice and access to justice, with leading academics who are experts in human rights and the death penalty, as well as civil and social issues. Our globally oriented, innovative law degrees are tailor-made for law professionals who want to make an impact on the world.

At Birmingham City School of Social Sciences our mission is to make sense of the world. Our students and academics work together across the disciplines of Criminology, Psychology and Sociology to develop insights into society. We also apply our research in real world settings on an international scale, working with communities, prisons, hospitals, schools and the police to understand, and influence, social change.



# BUSINESS, LAW AND SOCIAL SCIENCES COURSES



## LEVEL 4 Year 1:

We have recently reviewed our curriculum across Birmingham City University. If you wish to be considered for Level 4 entry, please visit our website to view a list of our current courses and contact us to check availability.

## LEVEL 5 AND 6 Year 2 and 3:

September and January entry:

- BA (Hons)  
**Accountancy**
- BA (Hons)  
**Accountancy and Business**
- BA (Hons)  
**Accounting and Finance**
- BA (Hons)  
**Business**
- BA (Hons)  
**Business and Economics**
- BA (Hons)  
**Business and Finance**
- BA (Hons)  
**Business and Human Resource Management**
- BA (Hons)  
**Business and Management**
- BA (Hons)  
**Business and Marketing**
- BA (Hons)  
**Criminology**
- BA (Hons)  
**Criminology and Security Studies**
- BA (Hons)  
**Criminology, Policing and Investigation**
- BA (Hons)  
**Economics and Finance**

- LLB (Hons)  
**Law**
- LLB (Hons)  
**Law with American Legal Studies**
- LLB (Hons)  
**Law with Business Law**
- LLB (Hons)  
**Law with Criminology**
- BA (Hons)  
**Marketing**
- BA (Hons)  
**Marketing, Advertising and Public Relations**
- BSc (Hons)  
**Psychology**
- BSc (Hons)  
**Psychology with Criminology**
- BSc (Hons)  
**Psychology with Sociology**
- BA (Hons)  
**Public Sociology**
- BA (Hons)  
**Sociology**
- BA (Hons)  
**Sociology and Criminology**

\*Courses are subject to change and availability.



## VISITING MASTERS PROGRAMME

The Visiting Masters Programme is a 4 week study experience programme for postgraduate students from our partner universities starting from January 2018.

Visiting Master's students will join existing classes and study together with full degree students at the Faculty of Business, Law and Social Sciences. This is a non-credit bearing project; however, upon successful completion you will be awarded with an attendance certificate, together with a feedback form summarising your performance at Birmingham City University.

- Law pathway
- Business pathway

\*Minimum number of 15 students required per programme



# COMPUTING, ENGINEERING AND THE BUILT ENVIRONMENT

The Faculty of Computing, Engineering and the Built Environment is comprised of two schools with a shared vision to create a powerful centre of technological excellence and innovation, and to equip you with the skills you need to succeed in the workplace and contribute to the wider society.

WE WORK WITH SOME  
OF THE WORLD'S  
FOREMOST EMPLOYERS,  
INCLUDING THE BBC,  
MICROSOFT, CISCO,  
JAGUAR LAND ROVER  
AND WILMOTT DIXON.



We have excellent resources including state-of-the-art laboratories and engineering workshops, world-class film and television studios, and the latest computing and digital technologies, all located in a spectacular environment provided by the Millennium Point building.

Our courses are designed to develop highly employable graduates and we have worked closely with our employer network to ensure our courses meet their demands and expectations. We work with some of the world's foremost employers, including the BBC, Microsoft, Cisco, Jaguar Land Rover and Wilmott Dixon.

## OUR ACCREDITATIONS INCLUDE:

**The Chartered Institute  
of Building (CIOB)**

**Royal Institution of Chartered  
Surveyors (RICS)**

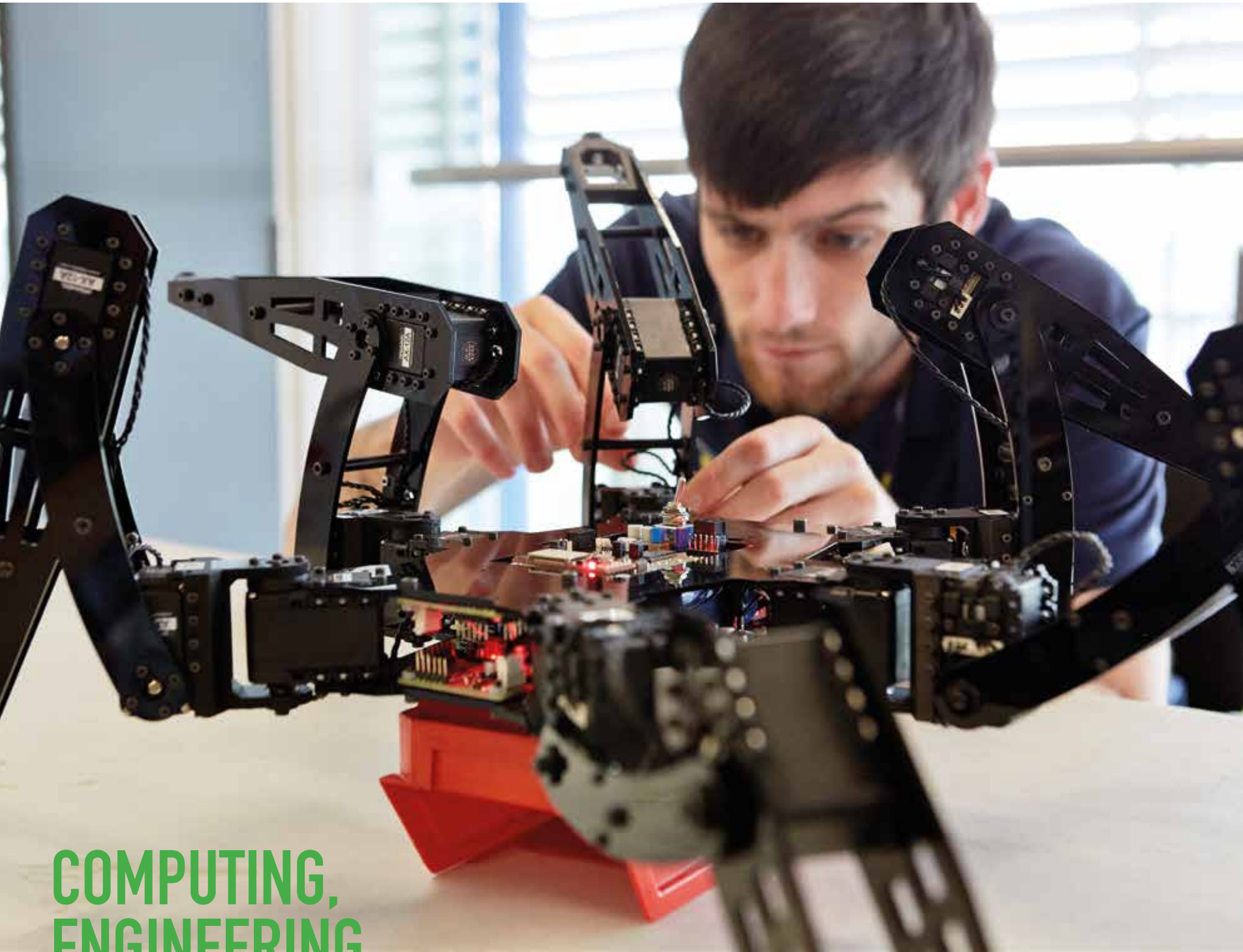
**Royal Town Planning  
Institute (RTPI)**

**Association of Project  
Managers (APM)**

**The Institution of Engineering  
and Technology (IET)**

**The Institute of Mechanical  
Engineering (IMechE)**





COMPUTING,  
ENGINEERING  
AND THE BUILT  
ENVIRONMENT  
COURSES

**LEVEL 4:  
Year 1:**

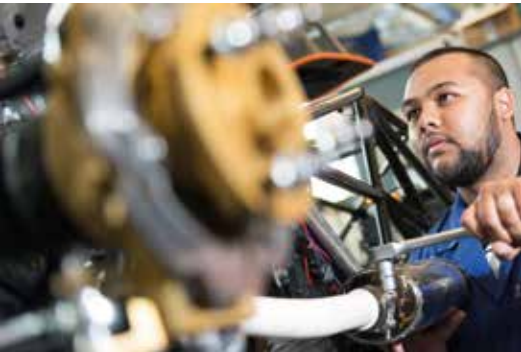
We have recently reviewed our curriculum across Birmingham City University. If you wish to be considered for Level 4 entry, please visit our website to view a list of our current courses and contact us to check availability.

**LEVEL 5 AND 6  
Year 2 and 3**  
September and January entry\*:

- BSc (Hons)  
**Architectural Technology**
- BEng (Hons)  
**Automotive Engineering**
- MEng  
**Automotive Engineering**
- BSc (Hons)  
**Building Surveying**
- BSc (Hons)  
**Business Information Technology**
- BEng (Hons)  
**Civil Engineering**
- BSc (Hons)  
**Computer Games Technology**
- BSc (Hons)  
**Computer Networks**
- BSc (Hons)  
**Computer Networks and Security**
- BSc (Hons)  
**Computer Science**
- BSc (Hons)  
**Construction Management**
- BSc (Hons)  
**Digital Broadcast Technology**
- BSc (Hons)  
**Digital Media Technology**

- BEng (Hons)  
**Electronic Engineering**
- BEng (Hons)  
**Electronic Engineering**  
Various routes available
- BSc (Hons)  
**Enterprise Information Systems**
- BSc (Hons)  
**Film Production Technology**
- BSc (Hons)  
**Film Technology and Visual Effects**
- BSc (Hons)  
**Forensic Computing**
- BSc (Hons)  
**Information and Communications Technology**
- BEng (Hons)  
**Mechanical Engineering**
- BSc (Hons)  
**Motorsports Technology**
- BSc (Hons)  
**Music Technology**
- BSc (Hons)  
**Quantity Surveying**
- BSc (Hons)  
**Real Estate**
- BSc (Hons)  
**Sound Engineering and Production**

\*Placement modules are unavailable  
\*\*Courses are subject to change and availability.





# HEALTH, EDUCATION AND LIFE SCIENCES

The Faculty of Health, Education and Life Sciences has a national and growing international reputation for pioneering approaches to learning and teaching, through the creation of cutting edge simulated experiences and has consistently achieved “excellent” ratings in national quality audits.

**THE SCHOOL ASPIRES TO BE ONE OF THE LARGEST AND MOST DIVERSE PROVIDERS OF PUBLIC HEALTH EDUCATION IN THE COUNTRY.**

## OUR FACILITIES INCLUDE:

- Mock operating theatre and hospital wards
- Virtual radiotherapy suite
- A radiography imaging suite
- A simulated home environment room
- Specialist resource room and laboratories



The School of Health Sciences was established in 2014 to accommodate our growing Biomedical Science and Sports courses portfolio. The school aspires to be one of the largest and most diverse providers of public health education in the country.

The School of Education at Birmingham City University is well-reputed for its high quality of teaching, students gave their school a first-class rating in the 2016 National Student Survey.





# HEALTH, EDUCATION AND LIFE SCIENCES COURSES



## LEVEL 4

**Year 1**  
September entry:

BEng (Hons)  
**Biomedical Engineering**

BSc (Hons)  
**Biomedical Sciences**

BSc (Hons)  
**Health Studies**  
Public Health

BSc (Hons)  
**Physical Education and School Sport**

BA (Hons)  
**Primary Education with QTS\***  
\*Taught modules without the school work experience

BSc (Hons)  
**Sport and Exercise Science**

BSc (Hons)  
**Sports and Exercise Nutrition**

BSc (Hons)  
**Sports Therapy**

BA (Hons)  
**Working with Children Young People  
and Families**

## LEVEL 4

**Year 1**  
January entry:

BSc (Hons)  
**Health Studies**  
Public Health

## LEVEL 5 AND 6

**Year 2 and 3**  
September and January entry:

BSc (Hons)  
**Public Health**

\*\*Courses are subject to change and availability.





# ENTRY REQUIREMENTS FEES

Some courses may have higher entry requirements but you can expect to require an overall average of a 2:2. If you'd like to know how that translates into your home qualification, please get in touch.

## English language requirements\*

To be successful while studying at Birmingham City University, you'll need to have a good level of English.

If IELTS isn't your main English language qualification provider, we also accept a range of other qualifications as evidence of your English language abilities. Please visit our website to find out if we accept your local qualification.

If you have a lower score, you may be eligible for a pre-sessional English programme.

## One semester:

IELTS 5.5 overall (or equivalent)

## Two semesters:

IELTS 6.0 with no less than 5.5 in any one language skill or equivalent.

## Credit Transfer

Please inform us if you wish to transfer credits back to your home institution when sending us your application. You will receive a transcript or Certificate of Attendance with your final marks at the end of the academic year as evidence of your studies.

If you come to Birmingham City University on a Study Abroad programme, this includes everyday tuition, examination costs and membership of the Students' Union! Please see further details below:

Programme	Costs
One Semester Study Abroad	£6,000
One Semester Study Abroad (from partner institution)	Subject to institutional agreement
Two Semesters Study Abroad	£12,000
Two Semesters Study Abroad (from partner institution)	Subject to institutional agreement
Exchange student nominated by partner institution	Tuition waived
Visiting Masters Programme	£2,400



\*Some courses may have a higher English language requirement. If applicable, this will be stated on your offer letter.



# HOW TO APPLY



IT'S AS  
EASY AS  
1, 2, 3...



**STEP 1:**  
Find your  
course



**STEP 2:**  
Complete our  
online application  
form



**STEP 3:**  
Submit your completed  
application form with the  
required documents to  
[goabroad@bcu.ac.uk](mailto:goabroad@bcu.ac.uk)



**DISCOVER MORE AND DOWNLOAD THE  
APPLICATION FORM FROM OUR WEBSITE:  
[WWW.BCU.AC.UK/INCOMING-STUDENTS](http://WWW.BCU.AC.UK/INCOMING-STUDENTS)**




**DEADLINE TO  
APPLY FOR  
SEPTEMBER 2017**



**DEADLINE TO  
APPLY FOR  
JANUARY 2018**

\*Please note modules will be agreed on  
a case by case basis upon application.





T: +44 121 331 7709/7754  
Email: [goabroad@bcu.ac.uk](mailto:goabroad@bcu.ac.uk)  
[www.bcu.ac.uk/incoming-students](http://www.bcu.ac.uk/incoming-students)

Go Abroad Unit  
International Office  
University House  
15 Bartholomew Row  
Birmingham  
B5 5JU