



BIRMINGHAM CITY
University

STUDY ABROAD IN BIRMINGHAM

2022/23



#BCUGoGlobal

CONTENTS

4	Welcome
6	Student stories
8	Studying in Birmingham
12	City Centre Campus
14	City South Campus
16	School of Art and and School of Jewellery
18	Facilities
22	Accommodation
24	Students' Union
26	Sport
28	Student support
30	Staff who inspire
36	City life
40	Arts, Design and Media
44	Business, Law and Social Sciences
48	Computing, Engineering and the Built Environment
52	Health, Education and Life Sciences
56	Entry requirements
57	Fees
58	How to apply



TOP REASONS TO CHOOSE BIRMINGHAM CITY UNIVERSITY

Experience a global city
Learn from the best
Invest in your future
Enhance your career prospects
Make lifelong friends from around the world

WELCOME

BIRMINGHAM CITY UNIVERSITY IS SITUATED IN THE HEART OF BIRMINGHAM, WHICH IN TURN IS LOCATED IN THE CENTRE OF THE UK. WE ARE IDEALLY PLACED TO EXPERIENCE THE EXCITING CULTURAL, SOCIAL, ECONOMIC AND PHYSICAL CHANGES THAT ARE TRANSFORMING OUR CITY FOR THE FUTURE.

Located just over an hour from London, we offer our students a friendly study environment in the UK's second-largest city, as well as outstanding facilities to support in their development and academic career.

We've built strong partnerships with both students and industry professionals to offer an inspirational learning environment. We've helped to enrich the lives of leading architects, designers, lawyers, engineers, healthcare professionals, musicians and many more.

Our innovative teaching methods, ground-breaking research and industry collaborations are backed by around 50 professional accreditations, providing you with an education that not only works in the classroom, but in the real world for when you graduate.

You'll share your university with 26,900 students from over 100 different countries, and we ensure that everyone feels right at home here in Birmingham to help make your move between countries as easy as possible.

This guide will give you a flavour of the exciting courses you can study at Birmingham City University. If you would like to know more, please don't hesitate to get in touch and we hope to see you in person soon.

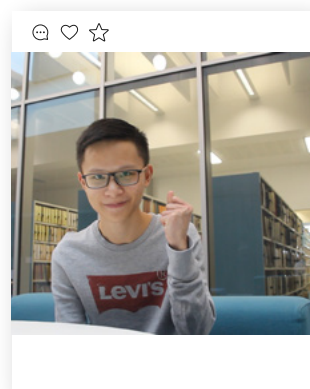
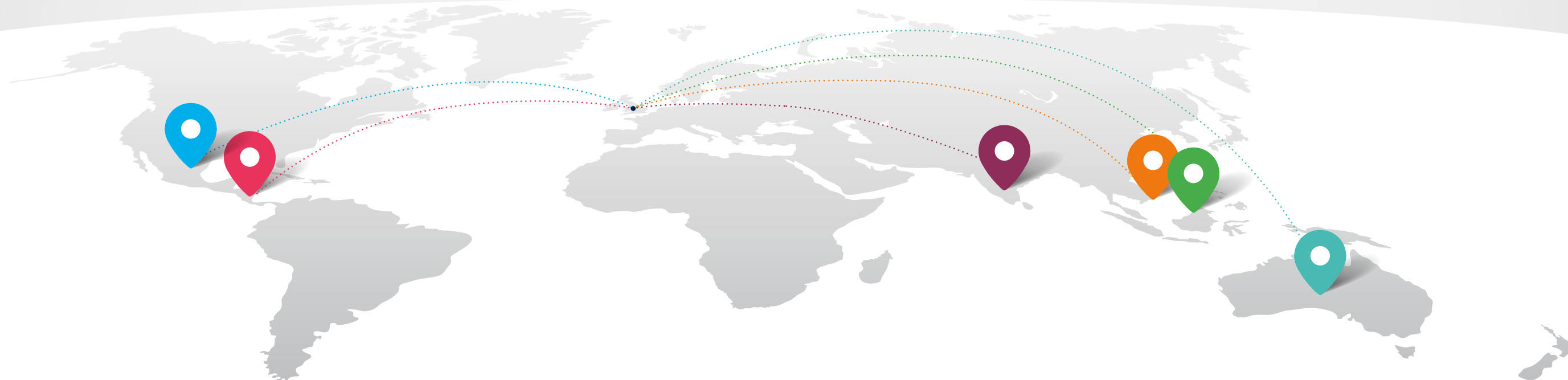
Please note that the information in this guide is aimed at Study Abroad and Exchange students starting their course at Birmingham City University in 2022/23 and should be read in conjunction with the information available on the course web pages.

IMPORTANT LEGAL INFORMATION

Birmingham City University's Terms and Conditions are available on The Student Contract web page www.bcu.ac.uk/student-info/student-contract. The Terms and Conditions set out the basis of the legal contract between you and the University in the event you accept an offer of a place to study with us. It is important that you read this document carefully.

STUDENT STORIES

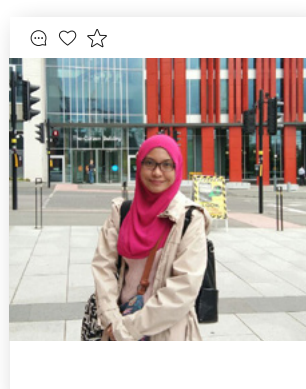
EVERYONE PICTURED BELOW IS A RECENT STUDY ABROAD STUDENT OF BIRMINGHAM CITY UNIVERSITY. IN THEIR OWN WORDS, THIS IS WHAT THEY LOVED ABOUT STUDYING AT BCU.



JIE OUYANG

BA (Hons) Economics,
China

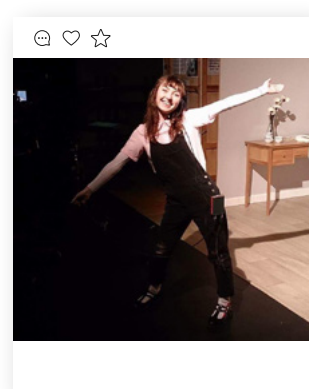
"The school's teaching facilities are very modern and meet the needs of students. Birmingham is a very livable place with fresh air, friendly citizens and green vegetation. I must come back to Birmingham if I have a chance."



AWANG TAKONG SITI RAHIMAH

BA (Hons) English, Brunei

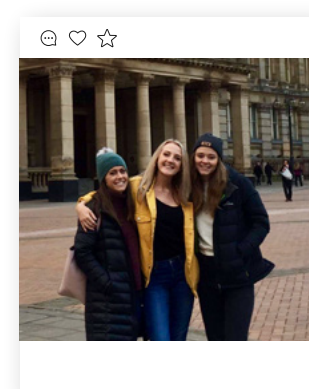
"Birmingham is very multicultural. People are from different backgrounds, religions and ethnicities, but we are all one. This is a very unique characteristic of a city in the UK."



ALYSON CROW

BA (Hons) Media and
Communication, Australia

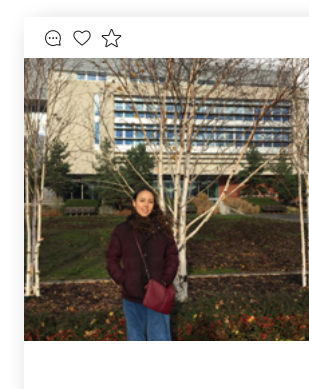
"I've enjoyed spending so much time in the TV studio and having the flexibility to choose different modules. In Australia, Film and TV is a separate degree but at BCU, Media and Communication allows you to experiment with different aspects of Media as it is a broader course."



MADDY ELLIS

BA (Hons) Criminology and
Security Studies, USA

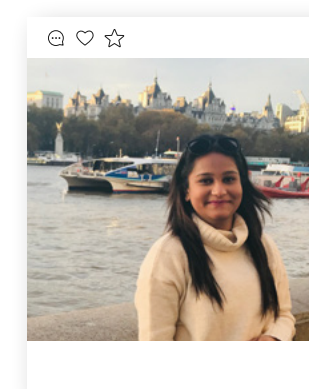
"The thought of studying 4,000 miles from home was initially intimidating, but when I arrived at BCU the faculty and students were so genuine and willing to help with whatever I needed! Although I had never played field hockey before, I joined the team and quickly gained lifelong friends from it. Living in Birmingham made it a short flight to all the cities I wanted to visit and although it's a cliché, the time spent studying abroad does change your life for the better. Can't wait to go back and visit!"



SOFÍA ZUÑIGA RIVERA

BA (Hons) Fashion Design,
Mexico

"I really enjoyed Birmingham. A lot of important things are within walking distance. It's a good place to meet young people, and make friends, everyone is welcoming and friendly. The city is not so big, yet it has every store you want, and it has a lot of nice restaurants, bars, and places like that. Also it's really close to London, and many other cities, I did a lot of day trips by bus and train."



PRACHI ROUTRAY

International MBA, India

"Undoubtedly, BCU is the best thing to ever happen for me. The opportunity to witness different cultures merged in one place, knowledge, experience and happiness just crossing boundaries are things that I'll take, along with my luggage. The chance to learn from such an amazing faculty and to witness new ways of learning has truly made my journey here at BCU worth it."

THE HEART

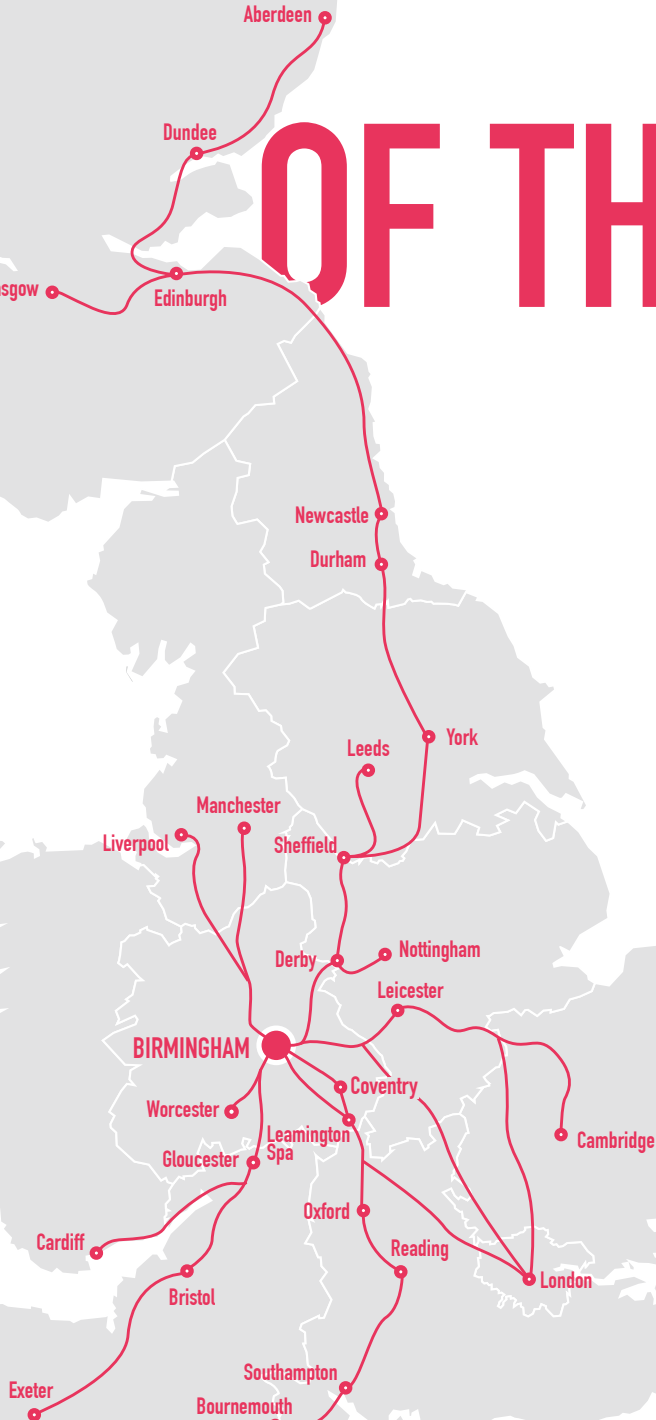
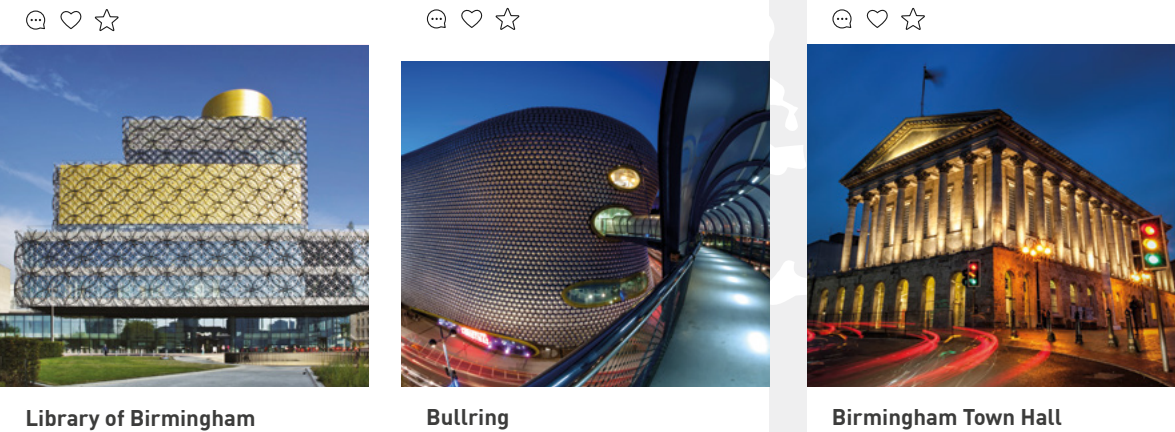
OF THE UK

NOT ONLY IS BIRMINGHAM ONE OF THE UK'S MOST EXCITING AND DIVERSE CITIES, IT IS ALSO ONE OF THE MOST ACCESSIBLE.

We are at the centre of the UK's road, rail and coach networks, so travelling further afield is no problem, while commuting from the surrounding area to our centrally located campuses is easy to do.

Local transport is also excellent, with a network of trains, buses and a recently-extended tram network providing easy access to all University sites. More information on our campus locations within the city can be found on the following pages.

www.bcu.ac.uk/maps



🚆 TRAINS:

BIRMINGHAM – LONDON	1h 26m
BIRMINGHAM – MANCHESTER	1h 30m
BIRMINGHAM – EDINBURGH	4h 50m

All journey times and routes are approximate.

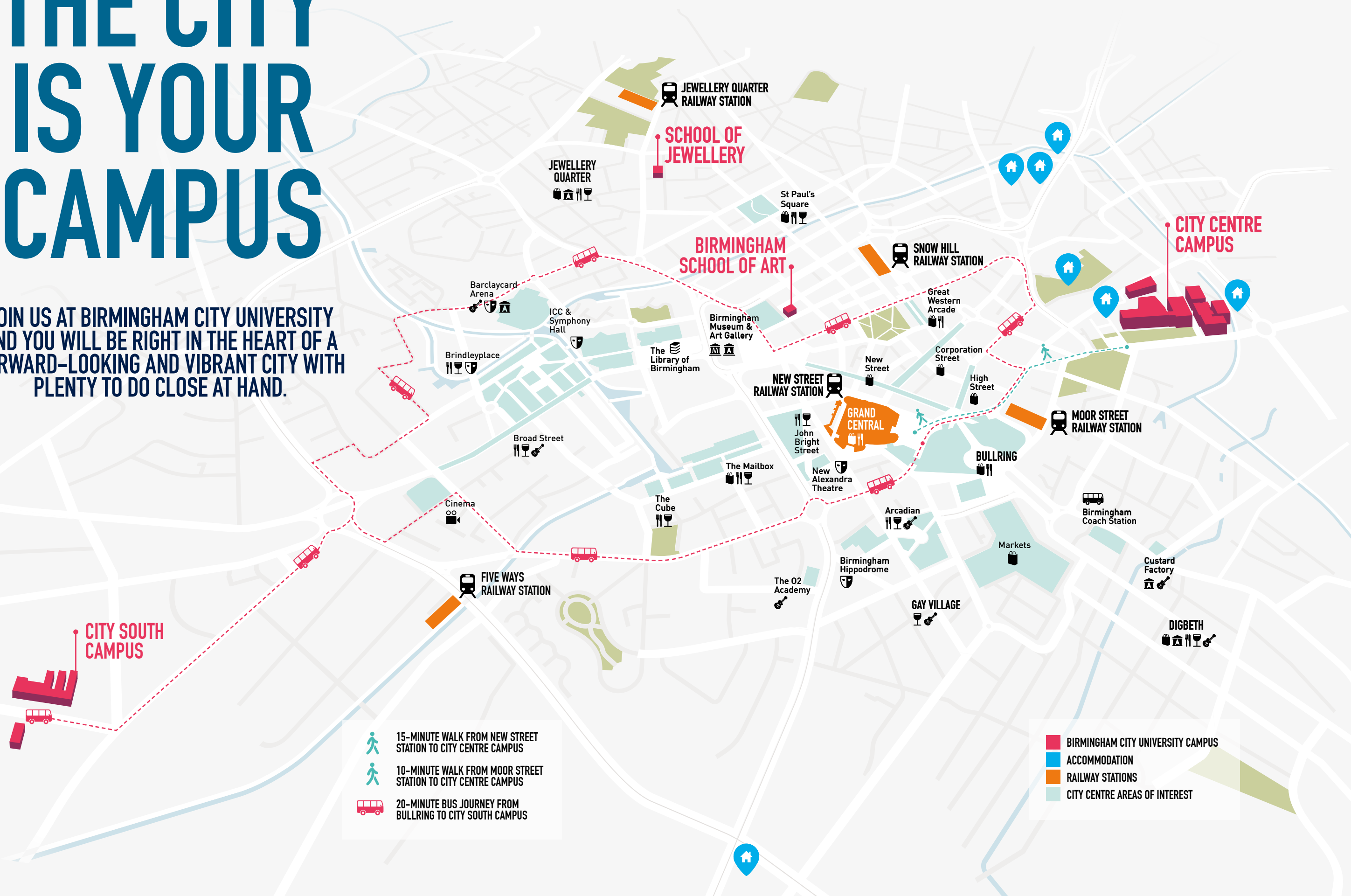
✈️ FLIGHTS:

BIRMINGHAM – AMSTERDAM	1h 15m
BIRMINGHAM – PARIS	1h 20m
BIRMINGHAM – DUBAI	7h 10m
BIRMINGHAM – ISLAMABAD	7h 40m
BIRMINGHAM – NEW DELHI	8h 30m





All journey times are approximate and may involve transfers.

THE CITY IS YOUR CAMPUS

JOIN US AT BIRMINGHAM CITY UNIVERSITY
AND YOU WILL BE RIGHT IN THE HEART OF A
FORWARD-LOOKING AND VIBRANT CITY WITH
PLENTY TO DO CLOSE AT HAND.



-  15-MINUTE WALK FROM NEW STREET STATION TO CITY CENTRE CAMPUS
-  10-MINUTE WALK FROM MOOR STREET STATION TO CITY CENTRE CAMPUS
-  20-MINUTE BUS JOURNEY FROM BULLRING TO CITY SOUTH CAMPUS

-  BIRMINGHAM CITY UNIVERSITY CAMPUS
-  ACCOMMODATION
-  RAILWAY STATIONS
-  CITY CENTRE AREAS OF INTEREST

CITY CENTRE CAMPUS

FACILITIES INCLUDE:

- Cisco networking lab
- Replica city trading room
- Curzon Print Centre
- Dedicated IT and student services support
- Four industry-standard TV studios
- Geotechnical soils lab
- Green screen MILO studio
- Hydraulics lab
- Mock law courts
- Library with access to printed and online resources
- Noise and vibration cells
- Photography studios and darkrooms
- Print, textiles, wood, ceramics and glass workshops
- Radio studios and editing suites
- Recording facilities and vintage mixing desk
- Robotic laboratory
- Specialist drama studios
- Students' Union.



WE ARE INVESTING £340 MILLION ACROSS OUR BUILDINGS AND FACILITIES TO GIVE YOU THE VERY BEST LEARNING ENVIRONMENT TO SHAPE YOUR EXPERIENCE.

This campus at the heart of Birmingham's fast-developing Eastside district, and just a short walk from the city centre, is where most students on courses including Music, Design, Media, Acting, Engineering, Computing, Digital Technology, Built Environment, Law, Social Science, Business and English are based.

The campus also features library, IT and student support facilities, giving a modern, dynamic space for you to learn in with state-of-the-art resources. An extension to the campus opened in 2018, with more learning space, another IT suite and an innovative group-working lecture theatre. It also provides a base for our Students' Union, incorporating the Grade II listed Eagle and Ball pub.

Our facilities are located alongside Eastside City Park – the first new urban park in Birmingham for over 130 years, which provides a superb space for relaxing in summer as well as a venue for events and activities.



ROYAL BIRMINGHAM CONSERVATOIRE

Royal Birmingham Conservatoire's £57 million teaching and performance facility is the first of its kind in the digital age and is the perfect fusion of traditional and contemporary. 9,000 sq m of purpose-designed teaching, rehearsal and state-of-the-art performance space offer world-class facilities for our music students.



CITY SOUTH CAMPUS

FACILITIES INCLUDE:

- Mock hospital wards and operating theatre
- Virtual radiotherapy and radiography imaging suites
- Simulated home environment
- Replica school classrooms
- Physiology and biomedical science laboratories
- Biomedical engineering and food science laboratories

STUDENTS ON HEALTH, SPORT, LIFE SCIENCES AND EDUCATION COURSES ARE BASED AT OUR STATE-OF-THE-ART CAMPUS IN THE LEAFY SUBURB OF EDGBASTON, WITHIN EASY REACH OF THE CITY CENTRE.

Our facilities replicate the real world of health, education, sport and life sciences, including an operating theatre, hospital wards and a fully equipped midwifery skills room, as well as sport and life sciences laboratories and replica classrooms for use by our teaching students.

We have invested £41 million in new facilities on this site including specialist laboratories for the School of Health Sciences, as well as a new home for the School of Education and Social Work.



HANDS-ON EXPERIENCE

Our courses are designed to give our students extensive practical and laboratory experience in a purpose-built environment to support their learning.

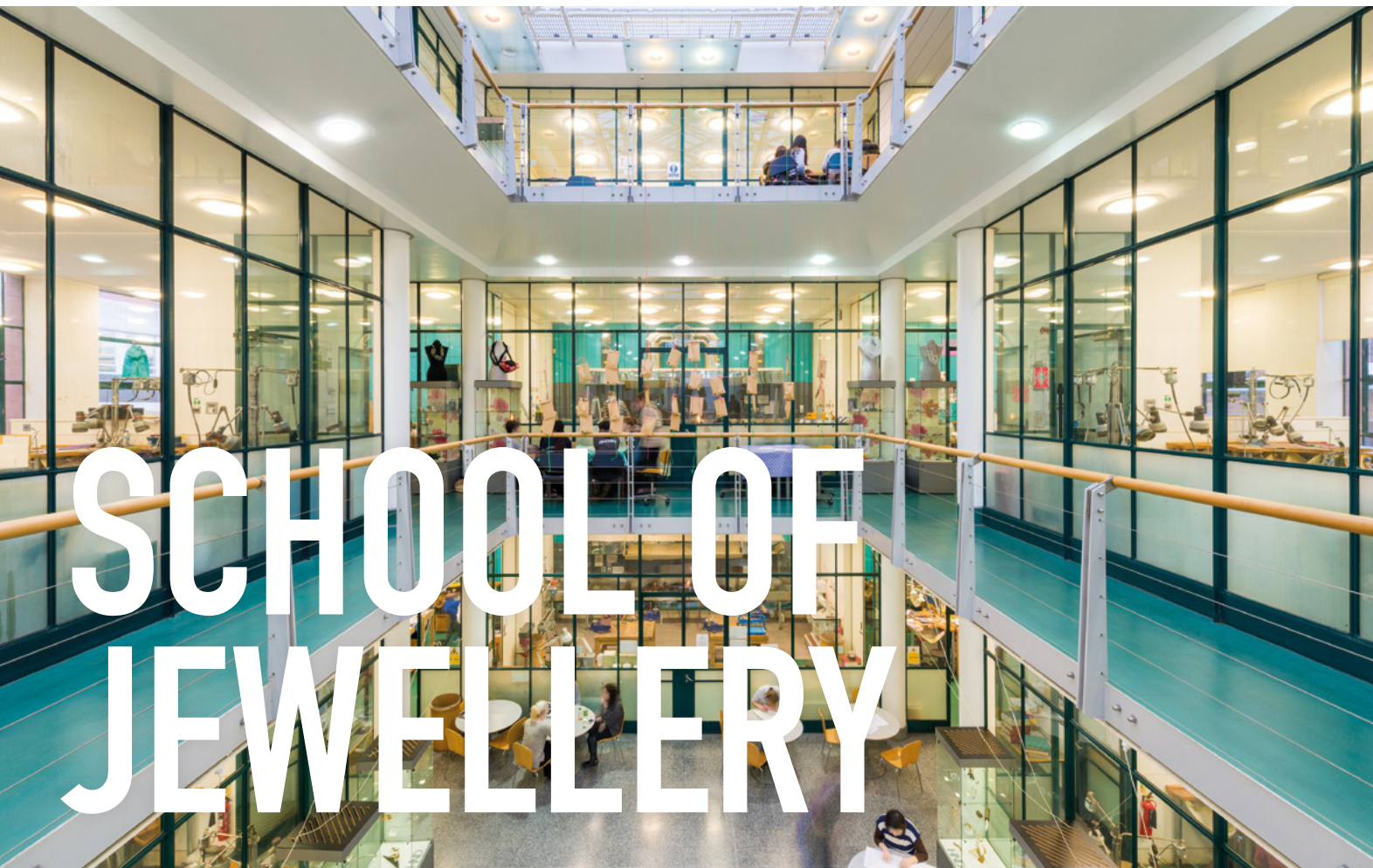
We were the first university in the UK to install a Zeiss interactive digitally-connected microscope system in our life science laboratories.

Our industry-standard sports facilities are designed to expose students to systems and equipment that they will be expected to use in the work place after graduating. These facilities mean that our students are able to host and work with professional sports teams, schools and clients to gain real-life experience on campus.

All courses have been co-designed with employers and are endorsed or accredited by professional bodies where appropriate.



The new building at our City South Campus



SCHOOL OF JEWELLERY

IN ADDITION TO OUR TWO MAIN CAMPUSES, OUR ART AND JEWELLERY STUDENTS BENEFIT FROM STUDYING AT SPECIALIST LOCATIONS IN THE CITY.

One of the most significant jewellery schools in the world stands in a modernised and spacious Victorian Gothic building at the heart of Birmingham's famous Jewellery Quarter, where much of the jewellery made in Britain today is still manufactured.

The School occupies a further two sites; Gemmology courses are based in a purpose-built area within Birmingham's new Assay Office and at St Paul's Square the new postgraduate research facility includes MA design studios, a new library, seminar space, computer room and PhD student hub.

FACILITIES INCLUDE:

- Specialist studio workshops
- Casting facility and electroplating laboratory
- Machine workshop including laser welders and laser cutters
- Exhibition space and specialist library
- Stores for materials and tools.



SCHOOL OF ART

THIS GRADE I LISTED VENETIAN GOTHIC BUILDING IN MARGARET STREET HOUSES A WONDERFUL COMPLEX OF TRADITIONAL-STYLE WORKSHOPS AND TEACHING AND EXHIBITION SPACE.

FACILITIES INCLUDE:

- Light and airy studios
- Gallery and installation space
- Fine art library
- Woodwork, metal, plaster, fibreglass and ceramics workshops
- Digital media, print and photography workshops.



Floating mezzanine levels, glass lifts and cutting-edge workspaces sit comfortably beside the original stained-glass windows and mosaic floors of this glorious purpose-built art school.

We're right in the city centre, perfectly placed next to the city's main museum and art gallery. There are purpose-built spaces throughout the building to present students' work in a thriving, exhibition-orientated home.

THE FACILITIES YOU NEED



TV STUDIOS

Our four industry-standard TV studios featuring the latest Sony equipment and a green screen MILO facility.

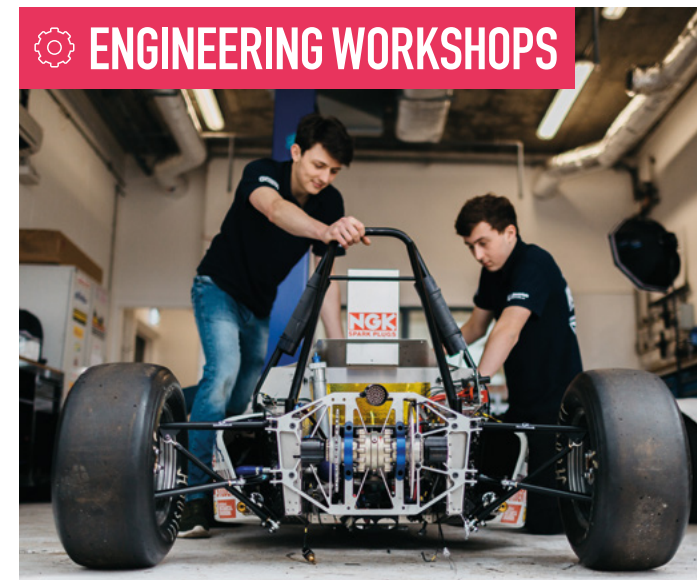
WHEN YOU CHOOSE TO STUDY AT BIRMINGHAM CITY UNIVERSITY, YOU CAN BE CONFIDENT THAT YOUR LEARNING NEEDS ARE OUR TOP PRIORITY.

In addition to high-quality facilities specific to your course, you will find a range of general learning resources which provide you with all the help you need to succeed.

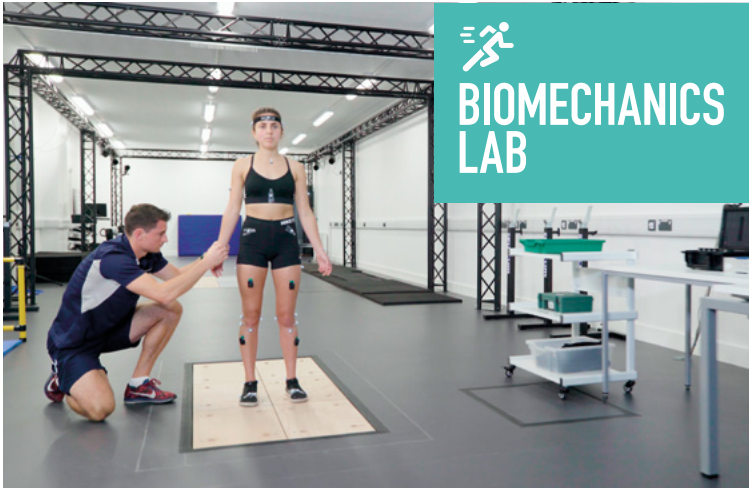


TRADING
ROOM

ENGINEERING WORKSHOPS



TEXTILE
STUDIOS





IT RESOURCES

You will have access to your own email account as soon as you accept an unconditional offer from us, free secure file storage and free University wi-fi, as well as the use of open-access computers within every library and faculty.

Our IT Help Desk is on hand to resolve any technical issues, while our Follow-Me printing system lets you print from any printer on campus (charges apply).

www.bcu.ac.uk/it





LIBRARY AND LEARNING RESOURCES

You will have access to a wide range of online and many print resources with 24/7 support. These have been selected in partnership with your lecturers, so are quality assured and relevant to your course.

If you need help in person or online, our expert staff and back-up services are there to help you get the best from the time you invest in developing your information-seeking skills.

We have been accredited to the Customer Service Excellence standard; we focus on delivery, timeliness, information, professionalism and staff attitude. We value collaborative working, and include the student voice alongside our expertise to improve your services.

www.bcu.ac.uk/library



A PLACE TO CALL HOME

WE OFFER ACCOMMODATION AT VARIOUS LOCATIONS AROUND THE CITY. OUR HALLS OF RESIDENCE ARE NEAR TO OUR CAMPUSES AND PUBLIC TRANSPORT, SO YOU'RE IDEALLY LOCATED FOR STUDYING AND SOCIALISING.



Jennens Court social space



En suite room at Staniforth House

Leaving home for university is one of the biggest moves you will ever make. And with the excitement, freedom and independence of living in halls, it is the perfect way to meet new friends.

University halls of residence gives you the opportunity to meet other students and get to know the local area.
www.bcu.ac.uk/accommodation

If you decide that you want to stay in private accommodation, Birmingham City University Students' Union has its own letting agency which we recommend to find private housing. www.bcsu.com/homes

WANT TO SEE MORE?

Visit bcu.ac.uk/accommodation to view our halls.



University Locks flat

AT A GLANCE



Over 2,000 rooms available



Easily accessible – close to public transport links



CCTV coverage and security staff at each site



Access to free wi-fi



Shared kitchen, living areas, laundry facilities and common rooms

* Accommodation for one semester is subject to availability and is not guaranteed.
* Accommodation images are representative only.
* Some of our accommodation options are not based in the city centre and may involve a journey by public transport.



YOUR STUDENTS' UNION

WELCOME TO BCUSU - YOUR STUDENTS' UNION!



Support and advice



Help finding your student home



Volunteering projects on a local, national or international scale



Campus shops for all your daily student essentials



A voice throughout your time here



Over 200 student groups to get involved in

AS SOON AS YOU ENROL, YOU'LL BE ASKED TO JOIN THE STUDENTS' UNION. MEMBERSHIP IS FREE, YOU WON'T HAVE ANY FORMS TO COMPLETE AND IT'S WELL WORTH BEING A MEMBER AS WE'RE ALWAYS HERE TO HELP YOU THROUGHOUT YOUR STUDENT JOURNEY.



INTERESTED IN SOCIETIES?

We sent our intrepid vlogger Joey to try out some of the societies at BCU. See how he gets on at www.bcu.ac.uk/societies



We like to consider that you're part of our family and that you will be for the entire time you study here. Being a part of the BCUSU family means you have free access to all of our amazing services and facilities, including:

Support and advice from our specially trained advisers on a range of topics, including money, health, academia and housing.

A voice throughout your time here: we guarantee you will be listened to and represented by us! We campaign on your behalf to make your student experience even better.

Over 200 student groups for you to get involved in, including sports, activities, religion, special interests and subject specific. As well as a great way to meet new people, being a member or leading a student group will look great on your CV! Volunteering projects on a local, national or international scale will enhance your existing skills and help you to learn new ones.

Our very own letting agency to help you find your next student home without the hassle.

Exciting entertainment to make your social life as fun-filled as possible – it's not all academic, you know!

A unique, Grade II listed venue at the City Centre Campus with special prices on all our food and drinks and a special entertainment programme just for you.

Shops on our campuses, offering all of those essential items you'll need.

We're run by students for students and each year we ask all our students to vote for who they want to lead BCUSU.

www.bcu.ac.uk/societies

GET INTO SPORT



✉ sport@bcu.ac.uk
🐦 @BCUSport
📘 BCUSport
📷 @BCUSport



Over 25 sports clubs that you can join



Complete beginners welcome



Meet new people from different courses



WHATEVER COURSE YOU STUDY, YOU'LL BE ABLE TO ACCESS A RANGE OF SPORT AND PHYSICAL ACTIVITY OPPORTUNITIES HERE AT BIRMINGHAM CITY UNIVERSITY. WHETHER YOU WANT TO COMPETE AT A HIGH LEVEL OR JUST TRY SOMETHING NEW, WE HAVE AN ACTIVITY SUITABLE FOR YOU!

From rowing to rugby and table tennis to tennis, we have teams in over 25 different sports, with 18 of those sports offering the chance to compete in the inter-university BUCS (British University and Colleges sports) league.

If competitive sport isn't for you, many of our students take part just for fun - enhancing their health and fitness, making new friends and providing an occasional break from their studies. We also offer the chance to take part

in courses to become a coach or referee, allowing you to contribute to the development of sport here or in the wider community.

The placement opportunities that arise from our contacts in the sporting world benefit all students, not just those on sport-related courses - from working for Aston Villa as part of the matchday media team to developing the software for an athlete monitoring app, there are a wide range of opportunities.



OUR PARTNERS

We have developed partnerships with a range of sporting bodies to enhance the student experience through placement, coaching and volunteering opportunities.

- Warwickshire County Cricket Club
- Team Birmingham Basketball Club
- Aston Villa FC
- City of Birmingham Swimming Club
- Moseley Rugby Club
- England Squash
- The Rugby Football Union
- Birmingham City University Futsal Team
- Edgbaston Priory Club

FIRST-CLASS SUPPORT

GOT A QUESTION? ASK US!

You can ask questions in person at help desks around the faculty buildings, through our online enquiry service or using the iBCU app.

ACCESSING ADVICE HAS NEVER BEEN EASIER. THROUGHOUT YOUR STUDENT JOURNEY, YOU WILL HAVE ACCESS TO OUR FULL RANGE OF SUPPORT SERVICES, INCLUDING CAREERS ADVICE, MENTORING, ADVICE ON FINANCE AND ACADEMIC MATTERS, PROFESSIONAL DEVELOPMENT EVENTS AND MORE.

SUPPORTING YOUR WELLBEING

Your health and happiness are important to us and there are a wide range of support services available in areas including disability and dyslexia, counselling, mental health and wellbeing, healthcare and chaplaincy. We offer ongoing support, workshops, and events such as our Mental Health Day which includes tea and talk sessions, music therapy, and therapy dogs!

CONFLICT RESOLUTION AND COMPLAINTS

Most people make friends for life when at university, but sometimes there can be disagreements. We can help you resolve concerns before they escalate. If you think that we've fallen short in some way, you can let us know and we'll work with you to try to resolve it. Your time at university is important to us and we want to help you get the most out of your studies.

DISABILITY

Whether you have already disclosed your disability to us, or believe that you might need help with a substantial long-term condition that is having an adverse impact on your ability to do normal daily activities, our Enablement team will be able to work with you to find the support you need. We recommend talking to us as soon as you can so that you can get the greatest benefit out of any support we can make available to you.

LOOK AFTER YOUR FINANCES

We know that financial health can impact on your physical and mental wellbeing. To help you balance your budget we can offer advice and support on the money you have, help you seek paid work, and give you tips on making your money go further.

For anyone struggling with their finances we offer a series of hardship funds to make things a little easier while you concentrate on your studies. We run various activities during National Student Money Week aimed at checking your financial health and sharing useful study hacks to make the most of your resources including time and money.

CHAPLAINCY

Faith plays a large part in the life of many of our students. Our chaplains are friendly and welcoming, and are happy to talk to students of any faith or none during times of personal challenge or as an alternative source of support.

www.bcu.ac.uk/student-affairs

“The global leisure sector is growing all the time, and we want our students to be at the forefront of the industry in the future. That is why we’re giving them the skills they need to succeed.”

✓ **RICHARD ODDY**
Associate Professor

Richard introduced the Event, Venue and Experience Management course in our Business School, the first course of its kind in the UK to be accredited by the Chartered Management Institute.

MEET THE STAFF WHO INSPIRE

**AT BIRMINGHAM CITY UNIVERSITY, YOU
WILL LEARN FROM THOSE WHO HAVE
BEEN THERE AND DONE IT.**

Many of our 2,000-strong team of academic staff are practising professionals and experts in their sector, including 10 National Teaching Fellows.

You will receive first-hand and up-to-date knowledge directly from those in the know, be it health practitioners, real estate specialists or professional musicians.

**TO FIND OUT MORE, VISIT
WWW.BCU.AC.UK/OUR-STAFF.**



“My goal is to use my industry insight to teach students different ways of solving problems surrounding digital forensic investigations. This involves building on the technological knowledge they don’t realise they already possess.”

< RICHARD HALE

Senior Lecturer in Digital Forensics

An expert in Digital Forensics, Richard first started working in the field in 2008. He moved to academia with extensive industry experience after working with two of the largest private digital forensics companies in the UK.

“Mooting is a great way to practise and develop your legal skills, so we wrote a book to help students realise their potential. The experiences you’ll gain will benefit you in and out of the classroom.”

DR SARAH COOPER >

Reader in Law

Dr Cooper co-authored the book *Preparing to Moot*, after she herself was a successful part of our mooting team during her time studying in our School of Law.



“Our approach is to embed human-centric thinking into our teaching and research, and develop solutions that provide both a healthy environment and healthy communities.”

PROFESSOR LYNSEY MELVILLE >

Professor of the Built Environment

An expert in low carbon technology who is currently leading research into the generation of energy from organic material, such as algae.



“My teaching has enabled our students to research the UN and participate in the meetings of the Human Rights Council. This is world-leading teaching that enables BCU students to help change the world.”

< PROFESSOR JON YORKE

Professor of Human Rights

An expert in international law and an adviser on the death penalty to the United Nations, the European Union, and the Council of Europe.



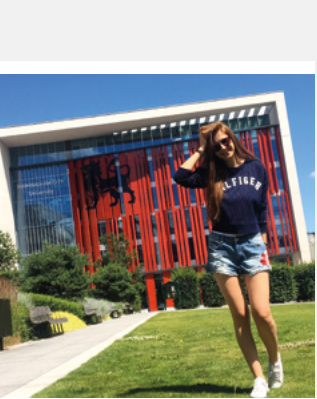
“My role is to make you think and question, to make you question what you think you know, and then to discover new ways of thinking, questioning and understanding.”

ROBERT GIBB >

Associate Professor International, Course Director School of Postgraduate Studies, School of Visual Communication

As Associate Professor for International I teach Conceptual Thinking; Design Philosophy; Innovation and Design as Visual Communication.





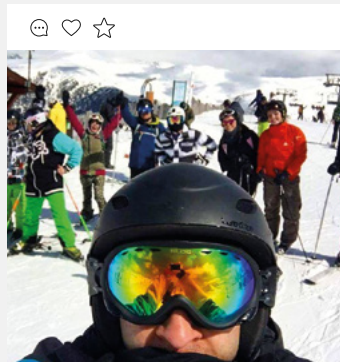
camellia.nk And sometimes we go back to the beginning to see everything in a new way.



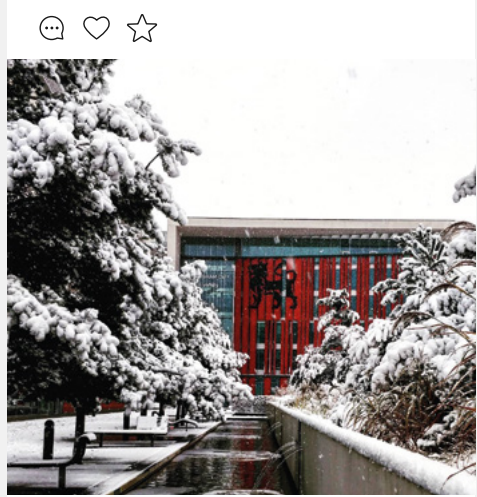
mybcu Digbeth, home to some of Birmingham's best street art.



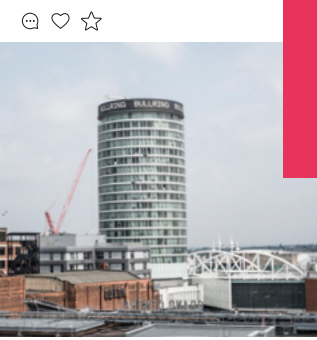
maryamwm
My week just got better... I graduated with a First Class degree in BA photography



bcusu_extreme_sports_team
Squad goals

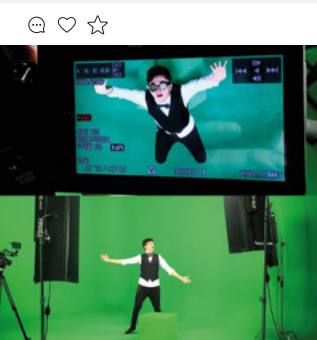


bcu_global Snowday at BCU.



kierandurrantphotography
Look where we ended up after the Open Day, Birmingham's Rotunda tower towering above the city.

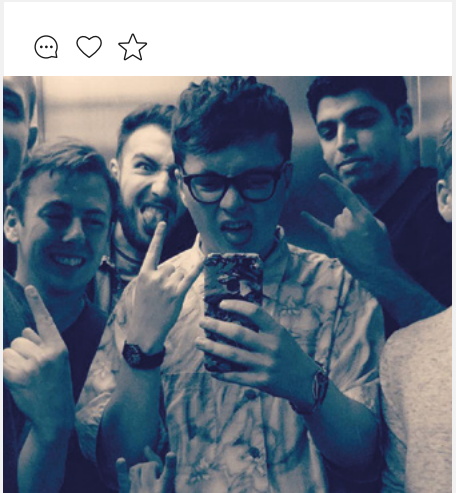
SNAPPED AT BCU



carrier_cosplay Steampunk time stopper! Good shoot on the green screen getting some awesome shots!

Want a taste of what student life in the city is really like? Take a look at our Instagram profile to see what's going on around our campuses and the city.

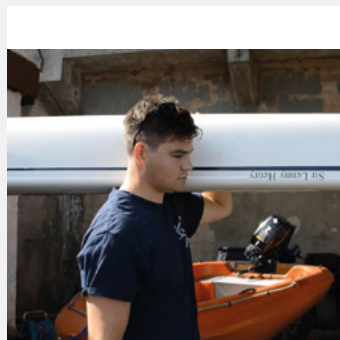
 [instagram/mybcu](https://www.instagram.com/mybcu)



joekapia
We came, we saw, we killed the crowd.



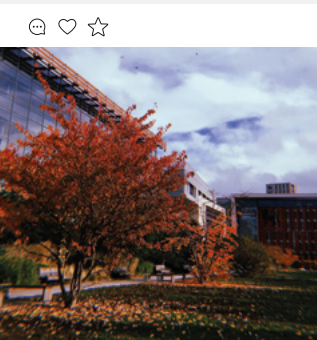
@bcupolo
Smiles all around! Club captain Maria at Summer Nationals 2018.



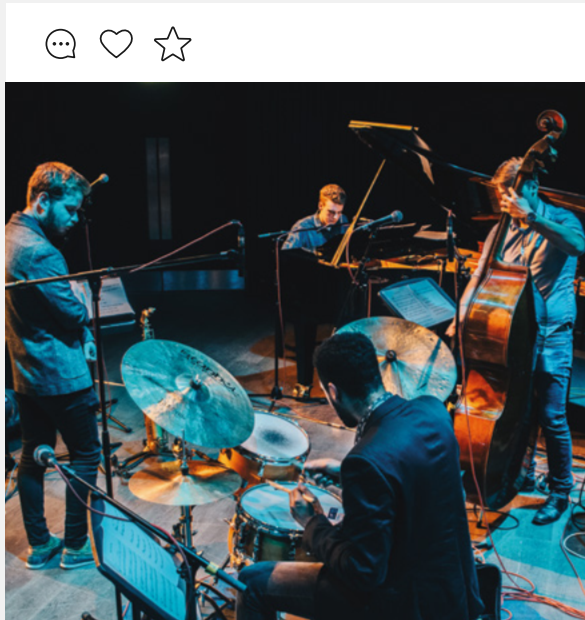
bcurowing
Ian Winstanley – This year's BCU rowing president.



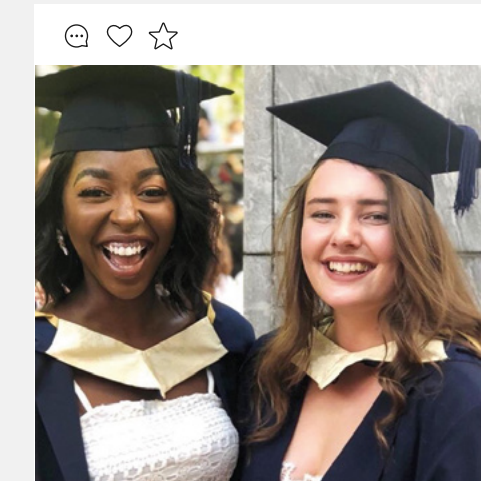
mybcu
Where's your favourite study spot on campus?



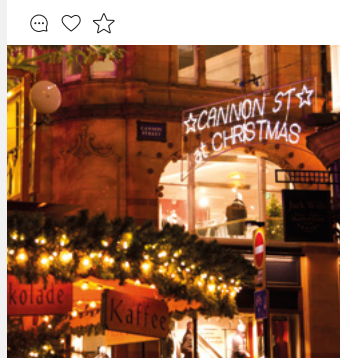
willrobbins_
Autumnal vibes at BCU today



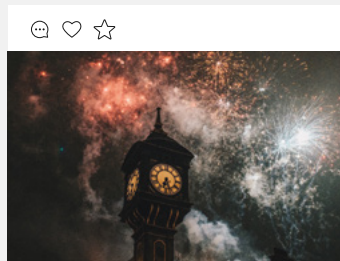
harryharryharryharry
Swung by to catch @edimusicmay at the Royal Birmingham Conservatoire Jazz Club this evening.



shumixx
These people make my heart full



vickybeni
Canon Street doing Christmas right.



kierandurrantphotography
Birmingham's St Martin's Church glistening under the Bank Holiday sunshine.



kierandurrantphotography
Birmingham's St Martin's Church glistening under the Bank Holiday sunshine.

MEET OUR VLOGGERS

Our students share their experiences and advice on all aspects of applying and preparing for university.



www.bcu.ac.uk/student-life

STUDENT LIFE IN BIRMINGHAM

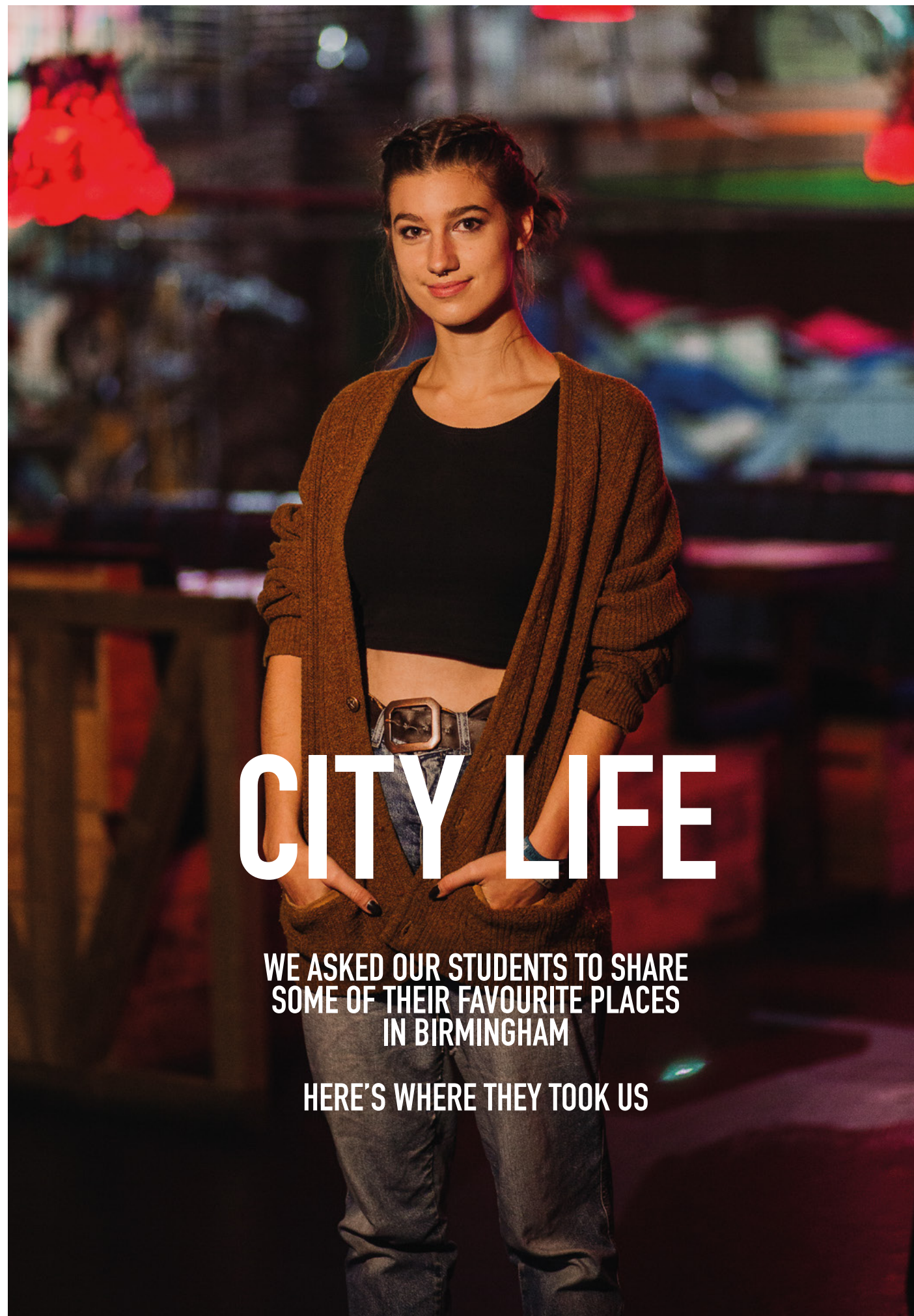
University life isn't all about studying and with plenty to see and do in the UK's second largest city, you'll never run out of things to keep you busy.



www.bcu.ac.uk/why-choose-BCU

WHY CHOOSE BCU?

Our student Jamie shares why he decided to study with us and why you'd love to come to BCU too!



CITY LIFE

WE ASKED OUR STUDENTS TO SHARE
SOME OF THEIR FAVOURITE PLACES
IN BIRMINGHAM

HERE'S WHERE THEY TOOK US



STREET FOOD AT DIGBETH DINING CLUB

Head down to Digbeth on a Friday or Saturday for an ever-changing street food selection at Digbeth Dining Club.

SHOPPING AT GREAT WESTERN ARCADE

Birmingham's arcades offer the chance to shelter from the elements while enjoying some interesting, independent shops.



STREET ART IN DIGBETH

Digbeth is well known as Birmingham's cultural hub, with art studios, creative businesses and street art aplenty.



LANE 7, THE MAILBOX

This is bowling like you've never seen it before, complete with walnut lanes, retro arcade games and a UV-lit karaoke bar.



GERMAN CHRISTMAS MARKET

Each Christmas, Birmingham hosts its very own German Market, the largest outside Germany and Austria!

BULLRING SHOPPING CENTRE

Home to a variety of home, beauty and clothing shops, you'll never feel like you're missing out on the latest fashion trends.



GHETTO GOLF

This indoor crazy golf venue incorporates graffiti, street food and cocktails for a truly unique night out!



PINBALL AT TILT

Birmingham has plenty of quirky bars including Tilt, where you can enjoy a game of pinball with your craft beer.



PANCAKES AT CHERRY REDS

Set yourself up for the day with a tasty breakfast from one of Birmingham's popular cafés.



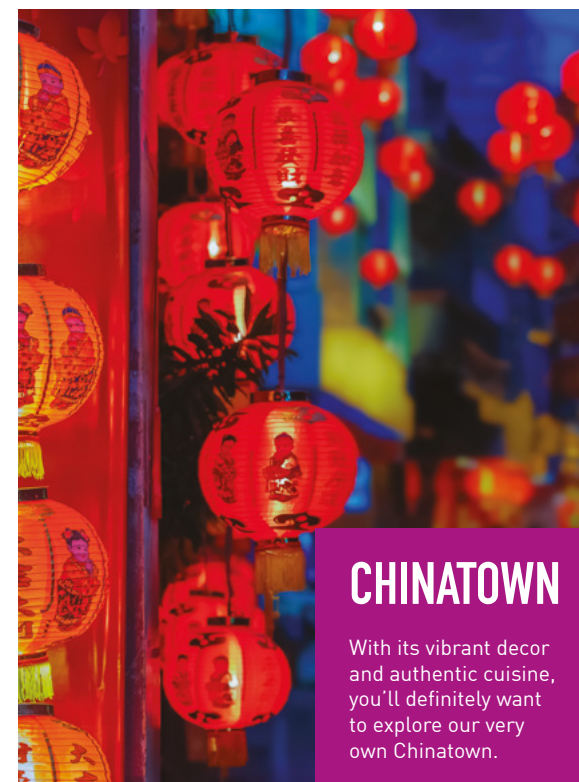
VINTAGE SHOPPING AT COW

Fancy a bit of shopping? As well as big-name stores in the Bullring, we have plenty of quirky independent stores like vintage clothes outlet Cow.



BURGERS AT ORIGINAL PATTY MEN

Having started out at Digbeth Dining Club, the OPM guys now have their own permanent outlet with some of the best burgers in town.



CHINATOWN

With its vibrant decor and authentic cuisine, you'll definitely want to explore our very own Chinatown.

HOT CHOCOLATE AT BOND

There are plenty of places to warm up with a hot drink such as Bond, a café complete with canalside seating.



TAKE A WALK ALONG THE CANAL

Our huge network of canals stretches across the city and is perfect for strolling, jogging or cycling.



THERE'S PLENTY MORE TO SEE AND DO IN BIRMINGHAM – FROM MUSIC AND CULTURE TO TOP-CLASS SPORT, WE HAVE ALL YOUR INTERESTS COVERED.

MUSIC

There's a host of great live music destinations to be found across the city – from sticky-floored pubs and intimate jazz bars to the famous O2 Academy and Jools Holland's Jam House.



SPORTS

Whether you're interested in sport as a participant or a spectator, Birmingham has plenty to offer. The city is set to host the Commonwealth Games in 2022, underlining its reputation as a destination for major sporting events. There are three big-name football clubs nearby and international cricket takes place at Edgbaston.



CULTURE

With a world-class symphony orchestra, royal ballet company and theatres, Birmingham has some of the finest contemporary arts venues in the country, while one of the city's most exciting facilities is the state-of-the-art, £188 million Library of Birmingham.



RELAXING

If you want to get out and about, the city has over 8,000 acres of park and open space, making it one of the UK's greenest cities.



ARTS, DESIGN AND MEDIA

OUR FACULTY OF ARTS, DESIGN AND MEDIA INCLUDES ROYAL BIRMINGHAM CONSERVATOIRE FOR MUSIC AND ACTING COURSES, A LEADING PROVIDER OF MEDIA TRAINING, AND EUROPE'S BIGGEST JEWELLERY SCHOOL.

The Faculty incorporates the former Birmingham Institute of Art and Design, an internationally-renowned centre for creative education with a history dating back to 1843.

Our links with industry have included Rolex, Swatch, Saatchi and Saatchi, Goldsmiths, the BBC, The Royal Shakespeare Company, the City of Birmingham Symphony Orchestra, The Brits, Glenn Howells Architects, Sony Computer Entertainment Europe, SEGA and Rockstar North.

Birmingham School of Architecture and Design

We support our students to shape the future, with over 100 years of training Royal Institute of British Architects (RIBA) accredited architects.

Birmingham Institute of Creative Arts
Incorporating Visual Communication, Film, Video Games and Fine Art, our heritage stretches back over 175 years. Our students have won prestigious national and international competitions, including the Royal television Awards, Macmillan Children's Book Awards, and Direct Marketing Awards. We offer two year fast track degree routes for select film and video games courses, and our art courses are taught in the Grade I listed Margaret St School of Art.

Birmingham Institute of Jewellery, Fashion and Textiles

Our jewellery students work with high profile companies such as Rolex, Georg Jensen, and Weston Beamour, whilst our fashion and textiles students showcase their designs at key industry events each year including Graduate Fashion Week.

Birmingham Institute of Media and English

We have strong links with a range of potential employers who offer our media students placements and expertise, from major radio and TV broadcasters to PR agencies, and give our English students access to industry expertise and masterclasses from writers, publishers and agents.

Royal Birmingham Conservatoire

We are a multidisciplinary institution training the musicians, actors, stage managers and applied theatre practitioners of the future, with a £57 million state of the art music building.

Our subject areas include:

- Acting and Theatre (Royal Birmingham Conservatoire)
- Architecture and Design
- Art and Design
- English
- Fashion and Textiles
- Fine Art
- Games Film and Animation
- Jewellery and Silversmithing
- Media and Multimedia Technology
- Music (Royal Birmingham Conservatoire)
- Visual Communication.

Facilities include:

- Print, textiles, wood, ceramics and glass workshops
- Photography studios and darkrooms
- Digital print and pattern-making facilities
- Four TV studios
- Green screen MILO studio
- Radio studio and editing suites
- Light and airy art studios
- Gallery and installation space
- Fine art library
- Exhibition space and specialist library
- Digi.lab - a digital lab for prototyping and 3D printing
- Jewellery, silversmithing and computer-aided design equipment
- 10 specialist acting studios complete with temperature regulation and sprung floors
- Five public performance venues – including the 500-seat Bradshaw Hall and the Eastside Jazz Club, situated in our new £57 million Royal Birmingham Conservatoire building
- An experimental black box performance space called the Lab
- Seven industry-standard recording studios and post-production facilities.

Birmingham School of Architecture and Design

We support our students to shape the future, with over 100 years of training Royal Institute of British Architects (RIBA) accredited architects.

Birmingham Institute of Creative Arts

Incorporating Visual Communication, Film, Video Games and Fine Art, our heritage stretches back over 175 years. Our students have won prestigious national and international competitions, including the Royal television Awards, Macmillan Children's Book Awards, and Direct Marketing Awards. We offer two year fast track degree routes for select film and video games courses, and our art courses are taught in the Grade I listed Margaret St School of Art.

Birmingham Institute of Jewellery, Fashion and Textiles

Our jewellery students work with high profile companies such as Rolex, Georg Jensen, and Weston Beamour, whilst our fashion and textiles students showcase their designs at key industry events each year including Graduate Fashion Week.

Birmingham Institute of Media and English

We have strong links with a range of potential employers who offer our media students placements and expertise, from major radio and TV broadcasters to PR agencies, and give our English students access to industry expertise and masterclasses from writers, publishers and agents.

Royal Birmingham Conservatoire

We are a multidisciplinary institution training the musicians, actors, stage managers and applied theatre practitioners of the future, with a £57 million state of the art music building.

ARTS, DESIGN AND MEDIA COURSES

You may also be able to join one of our postgraduate courses below:

Birmingham Institute of Jewellery, Fashion and Textiles
Graduate Diploma Jewellery and Related Products
MA Cosmetics Branding and Promotion
MA Fashion Design
MA Fashion Management
MA Fashion Promotion
MA Fashion Styling
MA Jewellery and Related Objects
MA Luxury Brand Management
MA Luxury Jewellery Management
MA Textiles and Surface Design

Contact us on goabroad@bcu.ac.uk for further information.

If you would like to study a postgraduate course at Royal Birmingham Conservatoire, please also contact us on goabroad@bcu.ac.uk.

	LEVEL 4 (Year 1)		LEVEL 5 (Year 2)		LEVEL 6 (Year 3)		LEVEL 7 (Masters)
	Sept	Jan	Sept	Jan	Sept	Jan	Sept
BIRMINGHAM INSTITUTE OF CREATIVE ARTS							
BA (Hons) Art and Design	•	•	•	•			
BA (Hons) Design for Performance: Theatre, Film and Live Events	•	•	•	•			
BA (Hons) Fine Art	•	•	•	•			
BA (Hons) Graphic Communication	•	•	•	•			
BA (Hons) Illustration	•	•	•	•			
BA (Hons) Photography	•	•	•	•			
SCHOOL OF GAMES, FILM AND ANIMATION (PART OF THE BIRMINGHAM INSTITUTE OF CREATIVE ARTS)							
BA (Hons) Film and Screenwriting	•	•	•	•			
BA (Hons) Film Business and Promotion	•	•	•	•			
BA (Hons) Film Studies	•	•	•	•			
BA (Hons) Filmmaking	•	•	•	•			
BA (Hons) Video Game Design and Production	•	•	•	•			
BIRMINGHAM INSTITUTE OF JEWELLERY, FASHION AND TEXTILES							
BA (Hons) Costume Design And Practice	•	•	•	•			
BA (Hons) Fashion Branding and Communication	•	•	•	•			
BA (Hons) Fashion Business and Promotion	•	•	•	•			
BA (Hons) Fashion Design	•	•	•	•			
BA (Hons) Garment Technology	•	•	•	•			
HND Jewellery and Silversmithing		•					
BA (Hons) Jewellery and Objects			•	•			
BA (Hons) International Jewellery Business	•		•	•			
BA (Hons) Textile Design (Various routes available)	•	•	•	•			
BIRMINGHAM INSTITUTE OF MEDIA AND ENGLISH							
BA (Hons) English and Drama	•	•	•	•			
BA (Hons) English and Creative Writing	•	•	•	•			
BA (Hons) English Language and Literature	•	•	•	•			
BA (Hons) English Literature	•	•	•	•			
BA (Hons) English and Journalism	•	•	•	•			
BA (Hons) Journalism	•	•	•	•	•	•	
BA (Hons) Media and Communication	•	•	•	•	•	•	
BA (Hons) Media Production	•	•					
BA (Hons) Music Industries	•	•	•	•			
BA (Hons) Music Journalism	•	•	•	•			
BA (Hons) Public Relations and Media	•	•	•	•			
BA (Hons) Sports Journalism	•	•	•	•			
BIRMINGHAM SCHOOL OF ARCHITECTURE AND DESIGN							
BA (Hons) Architecture	•		•		•		
BA (Hons) Interior Architecture and Design	•		•		•		
BA (Hons) Landscape Architecture	•		•		•		
BA (Hons) Product and Furniture Design	•		•		•		
ROYAL BIRMINGHAM CONSERVATOIRE							
BA (Hons) Acting	•						
BMus (Hons) Jazz					•		
BMus (Hons) Music			•		•		
Masters of Music							•

BUSINESS, LAW AND SOCIAL SCIENCES

THE FACULTY OF BUSINESS, LAW AND SOCIAL SCIENCES IS A GLOBALLY ORIENTED FACULTY, DRAWING ON THEORIES AND PRACTICE FROM AROUND THE WORLD TO INFORM OUR LEARNING ENVIRONMENT.

Birmingham City Business School is a leading professionally oriented, international business school focused on connecting you with every aspect of the world of business and innovation. While we have a unique relationship with the extraordinary city we're rooted in, renowned for its industry and commerce, our courses are designed to meet the needs of businesses across the globe.

Birmingham City School of Law has been at the forefront of innovative law teaching for more than 40 years, specialising in social justice and access to justice, with leading academics who are experts in human rights and the death penalty, as well as civil and social issues. Our globally oriented, innovative law degrees are tailor-made for law professionals who want to make an impact on the world.

At **Birmingham City School of Social Sciences** our mission is to make sense of the world. Our students and academics work together across the disciplines of

Criminology, Psychology and Sociology to develop insights into society. We also apply our research in real world settings on an international scale, working with communities, prisons, hospitals, schools and the police to understand, and influence, social change.

Many of our courses enjoy accreditation from one or more professional bodies. These include:

- Association of Chartered Certified Accountants (ACCA)
- Chartered Institute of Management Accountants (CIMA)
- Chartered Institute of Personnel and Development (CIPD)
- Chartered Management Institute (CMI)
- Chartered Institute of Marketing (CIM)
- Chartered Institute of Internal Auditors (IIA)
- The British Psychological Society (BPS)
- Solicitors Regulation Authority and Bar Standards Board.

Our subject areas include:

- Accounting, Economics and Finance
- Business, Management and Marketing
- Criminology and Policing
- Law
- Psychology
- Sociology and Black Studies.

Our facilities include:

- Library with access to 62 million print and online resources
- Dedicated IT and student services support
- Simulated courtrooms
- Psychology laboratories
- Internal marketing agency
- City Trading Room.



BUSINESS, LAW AND SOCIAL SCIENCES COURSES

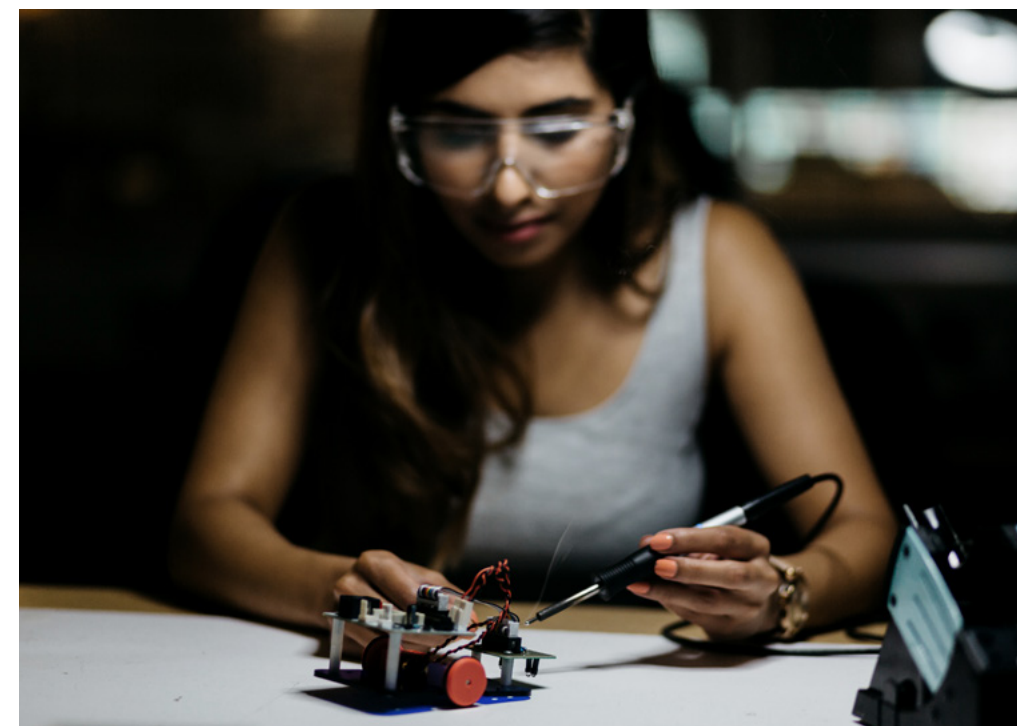


	LEVEL 4 (Year 1)		LEVEL 5 (Year 2)		LEVEL 6 (Year 3)	
	Sept	Jan	Sept	Jan	Sept	Jan
BIRMINGHAM CITY BUSINESS SCHOOL						
BSc (Hons) Accountancy	•	•	•	•		
BSc (Hons) Accounting and Finance	•	•	•	•		
BA (Hons) Business (Various routes available)	•	•	•	•		
BSc (Hons) Business Accounting	•	•	•	•		
BA (Hons) Business Economics	•	•	•	•		
BSc (Hons) Business Finance	•	•	•	•		
BA (Hons) Business Management (Various routes available)	•	•	•	•		
BA (Hons) Economics	•	•	•	•		
BA (Hons) Event, Venue and Experience Management	•	•	•	•		
BSc (Hons) Finance and Investment	•	•	•	•		
BA (Hons) Financial Economics	•	•	•	•		
BA (Hons) Global Sport Management	•	•	•	•		
BA (Hons) Human Resource Management	•	•	•	•		
BA (Hons) Marketing (Various routes available)	•	•	•	•		
SCHOOL OF SOCIAL SCIENCES						
BA (Hons) Black Studies	•	•	•	•	•	•
BA (Hons) Black Studies (Criminal Justice)	•	•	•	•	•	•
BA (Hons) Criminology	•	•	•	•	•	•
BA (Hons) Criminology and Security Studies	•	•	•	•	•	•
BA (Hons) Criminology, Policing and Investigation	•	•	•	•	•	•
BSc (Hons) Psychology	•	•	•	•	•	•
BSc (Hons) Psychology and Counselling	•	•				
BSc (Hons) Psychology with Criminology	•	•	•	•	•	•
BSc (Hons) Psychology with Sociology	•	•	•	•	•	•
BA (Hons) Sociology	•	•	•	•	•	•
BA (Hons) Sociology and Criminology	•	•	•	•	•	•
BA (Hons) Youth Work and Communities					•	•
SCHOOL OF LAW**						
LLB (Hons) Law	•	•	•	•	•	•
LLB (Hons) Law with American Legal Studies	•	•	•	•	•	•
LLB (Hons) Law with Business	•	•	•	•	•	•
LLB (Hons) Law with Criminology	•	•	•	•	•	•

*All programmes are subject to availability and placement modules are unavailable for one semester students
**Students may also be able to select Level 7 (postgraduate) modules. Please contact us for further information

COMPUTING, ENGINEERING AND THE BUILT ENVIRONMENT

WE WORK WITH
SOME OF THE
WORLD'S FOREMOST
EMPLOYERS,
INCLUDING
MICROSOFT, CISCO
AND WILMOTT DIXON



The Faculty of Computing, Engineering and the Built Environment comprises two Schools with a shared vision to create a powerful centre of technological excellence and innovation.

We have excellent resources including state-of-the-art laboratories and engineering workshops, industry-standard film and television studios, and the latest computing and digital technologies, all located in a spectacular environment provided by the Millennium Point building.

Our courses are designed to develop highly employable graduates and we have worked closely with our employer network to ensure our courses meet their demands and expectations. We work with some of the world's foremost employers, including, Microsoft, Cisco, and Wilmott Dixon.

OUR ACCREDITATIONS INCLUDE:

- The Chartered Institute of Building (CIOB)
- Royal Institution of Chartered Surveyors (RICS)
- Royal Town Planning Institute (RTPI)

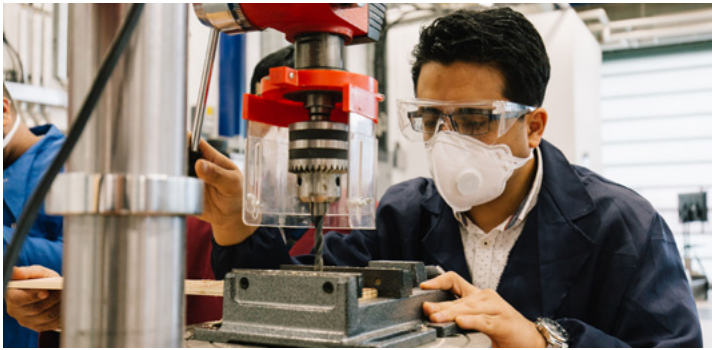
COMPUTING, ENGINEERING AND THE BUILT ENVIRONMENT

COURSES



	LEVEL 4 (Year 1)		LEVEL 5 (Year 2)		LEVEL 6** (Year 3)
	Sept	Jan	Sept	Jan	Sept
SCHOOL OF COMPUTING AND DIGITAL TECHNOLOGY					
BSc (Hons) Business Information Technology	•	•	•	•	
BSc (Hons) Computing and Information Technology	•	•	•	•	•
BSc (Hons) Computer Games Technology	•	•	•	•	•
BSc (Hons) Computer Networks	•	•	•	•	•
BSc (Hons) Computer Networks and Security	•	•	•	•	•
BSc (Hons) Computer Science	•	•	•	•	•
BSc (Hons) Computer and Data Science	•	•	•	•	
BSc (Hons) Cyber Security	•	•	•	•	
BSc (Hons) Computer Forensics	•	•	•	•	•
BSc (Hons) Digital Media Computing	•	•	•	•	•
BSc (Hons) Digital Media Technology	•	•	•	•	
BSc (Hons) Film Production Technology	•	•	•	•	•
BSc (Hons) Visual Effects	•	•	•	•	
BSc (Hons) Music Technology	•	•	•	•	•
BSc (Hons) Sound Engineering and Production	•	•	•	•	•
SCHOOL OF ENGINEERING AND THE BUILT ENVIRONMENT					
BEng (Hons)/MEng Automotive Engineering	•	•	•	•	•
BEng (Hons)/MEng Mechanical Engineering	•	•	•	•	•
BEng (Hons) Manufacturing Engineering	•	•	•	•	
BEng (Hons)/MEng Electronic Engineering (Various routes available)	•	•	•	•	•
BSc (Hons) Architectural Technology	•	•	•	•	•
BSc (Hons) Building Surveying	•	•	•	•	•
BSc (Hons) Quantity Surveying	•	•	•	•	•
BSc (Hons) Real Estate	•	•	•	•	•
BEng (Hons)/MEng Civil Engineering	•	•	•	•	•
BSc (Hons) Construction Management	•	•	•	•	•
BSc (Hons) Property Development and Planning	•	•	•	•	

*All programmes are subject to availability and placement modules are unavailable for one semester students.
**Only September entry and two semester option available.





HEALTH, EDUCATION AND LIFE SCIENCES

THE FACULTY OF HEALTH, EDUCATION AND LIFE SCIENCES HAS A NATIONAL AND GROWING INTERNATIONAL REPUTATION FOR PIONEERING APPROACHES TO LEARNING AND TEACHING, THROUGH THE CREATION OF CUTTING-EDGE SIMULATED EXPERIENCES, AND HAS CONSISTENTLY ACHIEVED “EXCELLENT” RATINGS IN NATIONAL QUALITY AUDITS



Our Faculty of Health, Education and Life Sciences has been awarded the Skills for Health Quality Mark, in recognition of the high standard of learning and training delivered to the health sector (2019-20). We have also been awarded British Dyslexia Association (BDA) Quality Mark for our health courses in recognition of our support for students with dyslexia – the first such award in the country for a university.

We have what you need to make your studies at Birmingham City University a success. Our Skills Practice and Care Enhancement (SPACE) area gives Health students a safe and supportive environment to practise over 60 clinical skills procedures outside of lecture time.

Four members of staff in our Faculty have attained the title of ‘Queen’s Nurse’, which recognises a high level of commitment to patient care and community nursing practice.

We have a long history of providing Education and Teacher Training courses. We were ranked in the UK top 25 for our undergraduate education courses. (Guardian League Tables 2022)

Our new Sports courses are building effective partnerships with professional and elite athletes, working closely with organisations including Warwickshire County Cricket Club, Kidderminster Harriers Football Club and Worcester Warriors.

HEALTH, EDUCATION AND LIFE SCIENCES COURSES



	LEVEL 4 (Year 1)		LEVEL 5 (Year 2)		LEVEL 6 (Year 3)	
	Sept	Jan	Sept	Jan	Sept	Jan
SCHOOL OF HEALTH						
BEng (Hons) Biomedical Engineering	•	•	•	•		
BSc (Hons) Biomedical Sciences	•	•	•	•	•	•
BSc (Hons) Food and Nutrition	•	•	•	•	•	•
BSc (Hons) Sports Coaching and Physical Education	•		•			
BSc (Hons) Sport and Exercise Nutrition	•		•			
BSc (Hons) Sport and Exercise Science	•		•			
SCHOOL OF EDUCATION AND SOCIAL WORK						
BA (Hons) Education Studies*	•	•	•	•	•	•
BA (Hons) Working with Children, Young People and Families*	•	•	•	•	•	•

* Taught modules without the work experience



*All programmes are subject to availability and placement modules are unavailable for one semester students



ENTRY REQUIREMENTS

Some courses may have higher entry requirements, but you can expect to require an overall average of a UK 2:2 classification (or equivalent). If you'd like to know how that translates into your home qualification, please get in touch.

English language requirements*

To be successful while studying at Birmingham City University, you'll need to have a good level of English.

If IELTS isn't your main English language qualification provider, we also accept a range of other qualifications as evidence of your English language abilities. Please visit our website to find out if we accept your local qualification: www.bcu.ac.uk/english-tests

If you have a lower score, you may be eligible for a pre-session English course prior to commencing your main Study Abroad course.

One semester (credit bearing)
Overall IELTS test score of 6.0 with at least 5.5 in each component or 6.5 overall for certain subjects.

Two semesters (credit bearing):
Overall IELTS test score of 6.0 with at least 5.5 in each component, or 6.5 overall for certain subjects.

FEES

If you come to Birmingham City University for Study Abroad, the fee will include tuition, examination costs and membership of the Students' Union. Please see further details below.

Programme	Costs
Study Abroad for One Semester:	£6,750
Study Abroad for Two Semesters:	£13,500

Students from our partner institutions who participate in an exchange course may have their tuition fee waived. Please contact your home university for further details.



*Please note that some programmes may have a higher English language requirement. If applicable, this will be stated on your offer letter.

HOW TO APPLY



IT'S AS EASY
AS 1, 2, 3, 4...



STEP 1:
Select your course

STEP 2:
Check eligibility



STEP 3:
Complete our online
application form



STEP 4:
Submit your completed application form and
supporting documents to goabroad@bcu.ac.uk



DISCOVER MORE AND
DOWNLOAD THE APPLICATION
FORM FROM OUR WEBSITE:
[BCU.AC.UK/STUDY-ABROAD](https://bcu.ac.uk/study-abroad)



**DEADLINE TO APPLY
FOR SEPTEMBER
2022 (SEMESTER 1)**



**DEADLINE TO APPLY
FOR JANUARY 2023
(SEMESTER 2)**

Applications for our Royal Birmingham
Conservatoire must be submitted
by 30 April 2022 for both semesters
to: <https://aec.dreamapply.com>



CONTACT US

T: +44 (0) 121 331 7709

E: goabroad@bcu.ac.uk

W: bcu.ac.uk/study-abroad

Facebook: [bcugoabroad](#)

Instagram: [bcugoabroad](#)

Twitter: [#BCUGoGlobal](#)

Go Abroad Team
International Office
University House
15 Bartholomew Row
Birmingham
B5 5JU
United Kingdom