



BIRMINGHAM CITY  
University

# I AM BCU

International Guide



# CONTENTS

4 Welcome to our University

6 I AM BCU

8 Why study with us?

10 The heart of the UK

12 The city is your campus

14 Our campuses

20 The facilities you need

24 Our research

26 Go green at BCU

28 A place to call home

30 Your Students' Union

32 Get into sport

34 First-class support

38 Working in the UK

40 Go abroad

42 On course to a career

44 Inspiring staff

48 Our graduates

50 The view from BCU

52 City life

56 Our courses

74 The application process

76 How to apply

78 Entry requirements

80 Foundation programmes

82 Fees and living costs

84 Financing your degree

86 Your arrival







# WELCOME

**BIRMINGHAM CITY UNIVERSITY IS SITUATED IN THE CENTRE OF BIRMINGHAM, WHICH IS LOCATED IN THE HEART OF THE UK. WE ARE IDEALLY PLACED FOR YOU TO EXPERIENCE THE EXCITING CULTURAL, SOCIAL, ECONOMIC, AND PHYSICAL CHANGES THAT ARE TRANSFORMING OUR CITY FOR THE FUTURE.**

Located just over an hour from London, we offer our students a friendly study environment in the UK's second-largest city, as well as outstanding facilities to support their development and academic career.

We've built strong partnerships with both students and industry professionals to offer an inspirational learning environment. We've helped enrich the lives of leading architects, designers, lawyers, engineers, healthcare professionals, musicians and many more.

Our innovative teaching methods, groundbreaking research and industry collaborations are backed by around 50 professional accreditations, providing you with an education that not only works in the classroom but in the real world for when you graduate.

You'll share your university with 26,900 students from over 100 different countries, and we ensure that everyone feels right at home here in Birmingham.

We offer guaranteed accommodation for international students, a meet and greet service at Birmingham Airport (BHX) and a friendly Student Services team whose priority is to help make your move between countries as easy as possible.

This guide will give you a flavour of the exciting courses you can study at Birmingham City University. If you would like to know more, please don't hesitate to get in touch, and we hope to see you in person soon.

Please note that the information in this guide is aimed at applicants starting their course at Birmingham City University in 2022/23 and should be read in conjunction with the information available on the course web pages.

#### IMPORTANT LEGAL INFORMATION

Birmingham City University's Terms and Conditions are available on the Student Contract web page [www.bcu.ac.uk/student-info/student-contract](http://www.bcu.ac.uk/student-info/student-contract). The Terms and Conditions set out the basis of the legal contract between you and the University if you accept an offer of a place to study with us. You must read this document carefully.



# I AM BCU

EVERYONE PICTURED BELOW IS A STUDENT OR RECENT GRADUATE OF BIRMINGHAM CITY UNIVERSITY. IN THEIR OWN WORDS, THIS IS WHAT THEY LOVE ABOUT BCU.

**ANH**  
MA International Human  
Resource Management  
- Vietnam -

*"The study experience at BCU is priceless to me. It isn't just about how amazing the course is, it's also about building friendships, enhancing your travel experience and transforming yourself."*

**RENEE**  
MA Arts and  
Project Management  
- Jamaica -

*"What I have learned here goes beyond academic knowledge. It's more about joining a network of creative and like-minded people. Hard working, real, purposeful energy that all merges together; this is what makes the BCU family."*

**JAKE**  
BA (Hons) Marketing  
- UK -

*"After visiting BCU at an open day, I knew this was the university for me. The staff, the course and the facilities were all that I had imagined a university to be."*

**ZANUB**  
LLB (Hons) Law  
- UK -

*"Before coming to BCU, I was shy and quite reserved. I have become so much more confident and have gotten involved in so many opportunities; it's been the best decision I've made."*

**YANLING**  
MA Visual Communication  
- China -

*"Like a friend, if I am ever in need of support or feel worried, I will look to my BCU community for help or advice."*

**INNA-MARIE**  
MA Design Management  
BA (Hons) Product Design  
- Finland -

*"I have had so many opportunities at BCU that in turn have allowed me to help and support other students, this is what I'm most proud of about being a student here."*

**SUNAN**  
PhD Construction  
- Pakistan -

*"It amazes me just how diverse and welcoming BCU is in regards to students from other countries and communities. It's fantastic seeing how many opportunities there are here."*

**YEE**  
MA Visual Communication  
- Malaysia -

*"Studying at BCU has led me to achieve so much - meeting illustrators, enhancing my research techniques, exploring new topics; it's because of BCU that I have been able to accomplish so many things."*

**CHIOMA**  
MSc Management and  
International Business  
- Nigeria -

*"Leaving my home country and studying in England was an opportunity I have always looked forward to and BCU made the journey worth it."*

**HAAR**  
MMus Music Technology  
- China -

*"If I go back to China to work and live, I will tell the people that are closest to me that I have a home in Birmingham, and in BCU."*





# WHY STUDY WITH US?

## HERE ARE OUR TOP 10 REASONS TO CHOOSE BIRMINGHAM CITY UNIVERSITY.

### 5 LEARN FROM THE BEST

Many of our teaching staff come from and maintain links with industry. Ten are National Teaching Fellows - awarded for excellence in university teaching and learning. We received the silver status for the quality of teaching in the Teaching Excellence Framework (TEF) 2017. See page 38.

### 6 PRACTICE-BASED RESEARCH

Almost 90% of our research was judged to have delivered 'outstanding' or 'very considerable' external impact in the most recent review, the Research Excellence Framework 2014. See page 24.

### 1 WORK WITH GLOBAL BRANDS

We have many industry partners and work with big-name employers like the BBC, the NHS, Jaguar Land Rover, Cisco, Microsoft and the Royal Shakespeare Company. All of our courses incorporate work-related experience, with many giving the option of a year-long placement.

### 7 INTERNATIONAL SCHOLARSHIPS

Every year we provide a number of scholarships recognising the talents of our international students, which are applied towards the cost of tuition fees.

### 2 INTERNATIONALLY ACCREDITED COURSES

We have around 50 internationally recognised accreditations for our courses from such bodies as the Institution of Engineering and Technology, Chartered Institute of Management Accountants and Royal Institute of British Architects.

### 8 EARN WHILE YOU LEARN

Our student employment agency allows you to apply for paid roles at the University, gaining experience in crucial aspects of job applications and valuable feedback on your work.

### 3 A GLOBAL CITY

Study with us, and you will be located at the heart of the UK's second-largest city - with all its social and employment possibilities. In fact, Birmingham was declared the most rapidly improving city in the country in which to live and work (Good Growth for Cities index 2017). See page 10.

### 9 INVESTING IN YOUR FUTURE

We are undertaking a £340 million investment programme in industry-standard, state-of-the-art facilities to ensure you have the best possible environment for practice-based learning. See page 20.

### 4 ENHANCING CAREER PROSPECTS

We offer career support and advice throughout your time with us for up to three years after graduating. Our Graduate+ scheme embeds career-related skills into every one of our degree courses, from becoming a course representative to studying abroad. See page 36.

### 10 GAINING REAL-WORLD EXPERIENCE

We provide the chance to gain industry and professional practice experience through work placements, mentoring schemes, Erasmus years abroad and sandwich courses.

# THE HEART OF THE UK

NOT ONLY IS BIRMINGHAM ONE OF THE UK'S MOST EXCITING AND DIVERSE CITIES; IT IS ALSO ONE OF THE MOST ACCESSIBLE

We are at the centre of the UK's road, rail and coach networks, so travelling further afield is no problem while commuting from the surrounding area to our centrally located campuses is easy to do.

Local transport is also excellent, with a network of trains, buses and a recently extended tram network providing easy access to all University sites. For more information on our campus locations within the city, see page 14.

[www.bcu.ac.uk/maps](http://www.bcu.ac.uk/maps)



Library of Birmingham



Bullring



Birmingham Town Hall



## 🚆 TRAINS:

BIRMINGHAM – LONDON	1h 23m
BIRMINGHAM – MANCHESTER	1h 27m
BIRMINGHAM – EDINBURGH	4h 14m

All journey times and routes are approximate.

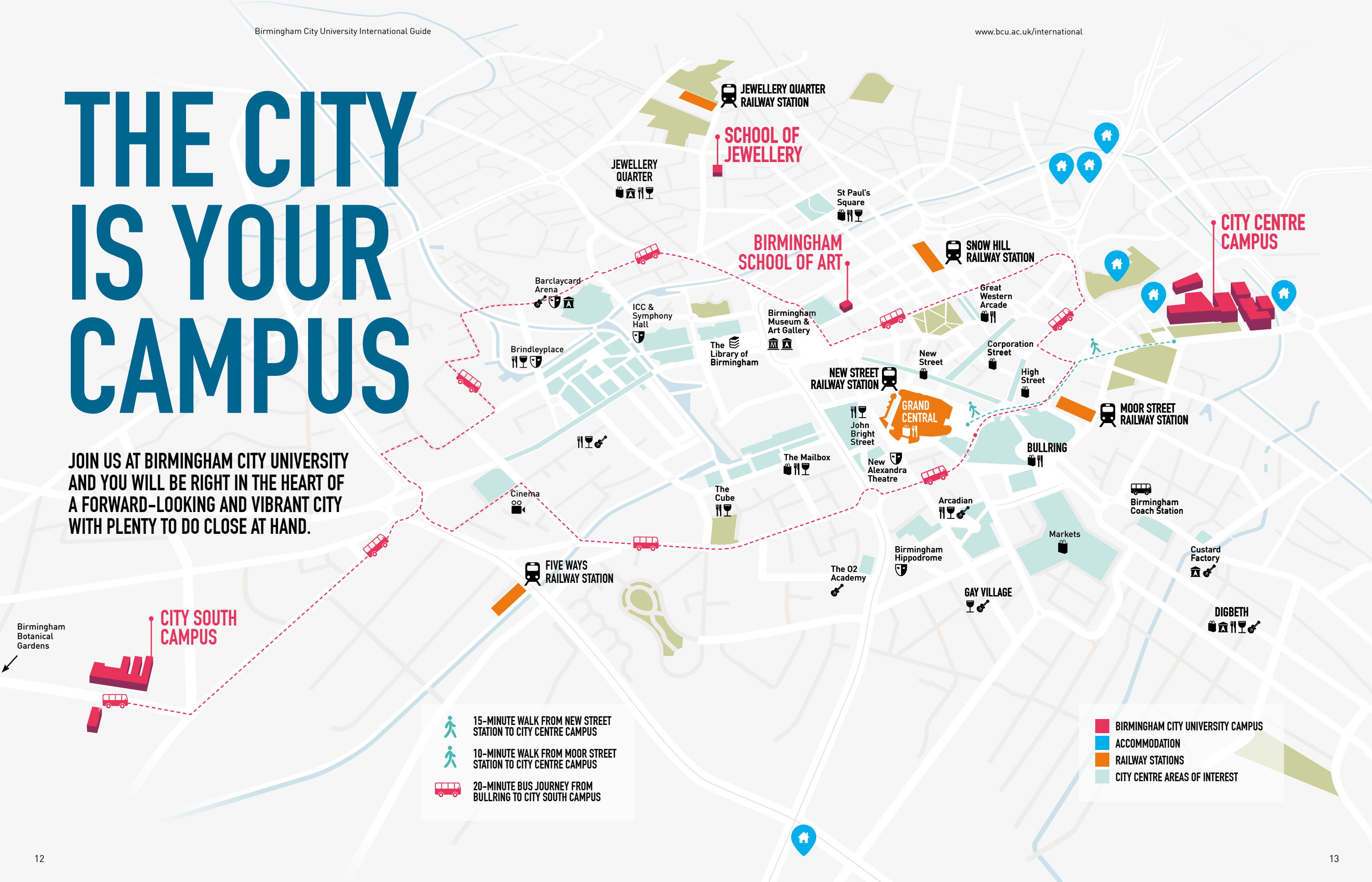
## ✈️ FLIGHTS:

BIRMINGHAM – AMSTERDAM	1h 15m
BIRMINGHAM – PARIS	1h 20m
BIRMINGHAM – DUBAI	7h 10m
BIRMINGHAM – ISLAMABAD	7h 40m
BIRMINGHAM – NEW DELHI	8h 30m

All journey times are approximate and may involve transfers.

# THE CITY IS YOUR CAMPUS

JOIN US AT BIRMINGHAM CITY UNIVERSITY AND YOU WILL BE RIGHT IN THE HEART OF A FORWARD-LOOKING AND VIBRANT CITY WITH PLENTY TO DO CLOSE AT HAND.



-  15-MINUTE WALK FROM NEW STREET STATION TO CITY CENTRE CAMPUS
-  10-MINUTE WALK FROM MOOR STREET STATION TO CITY CENTRE CAMPUS
-  20-MINUTE BUS JOURNEY FROM BULLRING TO CITY SOUTH CAMPUS

-  BIRMINGHAM CITY UNIVERSITY CAMPUS
-  ACCOMMODATION
-  RAILWAY STATIONS
-  CITY CENTRE AREAS OF INTEREST





# CITY CENTRE CAMPUS

## FACILITIES INCLUDE:

- Cisco networking lab
- Replica city trading room
- Curzon Print Centre
- Dedicated IT and student services support
- Four industry-standard TV studios
- Geotechnical soils lab
- Green screen MILO studio
- Hydraulics lab
- Mock law courts
- Library with access to printed and online resources
- Noise and vibration cells
- Photography studios and darkrooms
- Print, textiles, wood, ceramics and glass workshops
- Radio studios and editing suites
- Recording facilities and vintage mixing desk
- Robotic laboratory
- Specialist drama studios
- Students' Union.



## WE ARE INVESTING £340 MILLION ACROSS OUR BUILDINGS AND FACILITIES TO GIVE YOU THE VERY BEST LEARNING ENVIRONMENT TO SHAPE YOUR EXPERIENCE.

This campus at the heart of Birmingham's fast-developing Eastside district, and just a short walk from the city centre, is where most students on courses such as Music, Design, Media, Acting, Engineering, Computing, Digital Technology, Built Environment, Law, Social Science, Business and English are based.

The campus also features a library, IT and student support facilities, giving you a modern, dynamic space to learn in with state-of-the-art resources. An extension to the campus opened in 2018, with more learning space, another IT suite and an innovative group-working lecture theatre. It also provides a base for our Students' Union, incorporating the Grade II listed Eagle and Ball pub.

Our facilities are located alongside Eastside City Park – the first new urban park in Birmingham for over 130 years, which provides an ideal space for relaxing in summer and a venue for events and activities.

The University is launching its £60 million STEAMhouse innovation campus in 2022, where new ideas will be explored, tested and enabled to grow in a fully equipped state-of-the-art digital and production facility. The overhaul will see the restoration of the Grade A listed Belmont Works building, adjacent to our City Centre Campus, which has stood derelict since being gutted by a fire in 2007.



## ROYAL BIRMINGHAM CONSERVATOIRE

A state-of-the-art £57 million building at our City Centre Campus, opened in 2017, provides a conservatoire for the 21st Century. Our music students benefit from a new concert hall, private rehearsal and practise rooms and teaching spaces for musicians from various disciplines.





# CITY SOUTH CAMPUS

## FACILITIES INCLUDE:

- Mock hospital wards and operating theatre
- Virtual radiotherapy and radiography imaging suites
- Simulated home environment
- Replica school classrooms
- Physiology and biomedical science laboratories.

Social Kitchen  
City South Campus



**STUDENTS ON HEALTH, SPORT, LIFE SCIENCES, AND EDUCATION COURSES ARE BASED ON OUR STATE-OF-THE-ART CAMPUS IN THE LEAFY SUBURB OF EDGBASTON, WITHIN EASY REACH OF THE CITY CENTRE.**

Our facilities replicate the real world of health, education, sport and life sciences, including an operating theatre, hospital wards and a fully equipped midwifery skills/birthing room, and sport and life sciences laboratories and replica classrooms for use by our teaching students.

We have invested £41 million in new facilities on this site, including specialist laboratories for the School of Health Sciences and a new home for the School of Education and Social Work.



## NEW HOME FOR SPORT COURSES

The University will be at the very heart of legacy plans for Birmingham's Commonwealth Games in 2022. We have agreed to a deal with the city council for the redeveloped Alexander Stadium. The stadium will provide a new home for our sports courses, giving our students access to world-class professional facilities and ensuring the stadium remains an integral part of the sporting fabric of the city, region and nation for years to come.

The agreement will allow us to expand our provision with space to accommodate up to 1,000 students (it will be set over three storeys in the Western Stand). The site will be furnished to include state-of-the-art sporting equipment such as environmental chambers and anti-gravity treadmills, providing elite-level training for students.

Our sport and life sciences courses launched in 2016, including Sports Therapy, Food and Nutrition, and Biomedical Sciences – proving popular with students preparing for careers in the sporting or life science industries.





**IN ADDITION TO OUR TWO MAIN CAMPUSES, OUR ART AND JEWELLERY STUDENTS BENEFIT FROM STUDYING AT SPECIALIST LOCATIONS IN THE CITY.**

Our jewellery school stands in a modern and spacious building in Vittoria Street, right in the heart of Birmingham's famous Jewellery Quarter where much of the jewellery made in Britain today is manufactured. Gemmology courses are based in a purpose-built area within Birmingham's new Assay Office.

A new postgraduate facility in the Jewellery Quarter's St Paul's Square offers an improved specialist jewellery library, design studios and more.

#### **FACILITIES INCLUDE:**

- Specialist studio workshops
- Casting facility and electroplating laboratory
- Machine workshop including laser welders and laser cutters
- Exhibition space and specialist library
- Stores for materials and tools.



**THIS GRADE I LISTED VENETIAN GOTHIC BUILDING IN MARGARET STREET HOUSES A WONDERFUL COMPLEX OF TRADITIONAL-STYLE WORKSHOPS AND TEACHING AND EXHIBITION SPACE.**

#### **FACILITIES INCLUDE:**

- Light and airy studios
- Gallery and installation space
- Fine art library
- Woodwork, metal, plaster, fibreglass and ceramics workshops
- Digital media, print and photography workshops.



Floating mezzanine levels, glass lifts and cutting-edge workspaces sit comfortably beside the original stained-glass windows and mosaic floors of this glorious purpose-built art school.

We're right in the city centre, perfectly placed next to the city's main museum and art gallery. There are purpose-built spaces throughout the building to present students' work in a thriving, exhibition-orientated home.



# THE FACILITIES YOU NEED



## TV STUDIOS

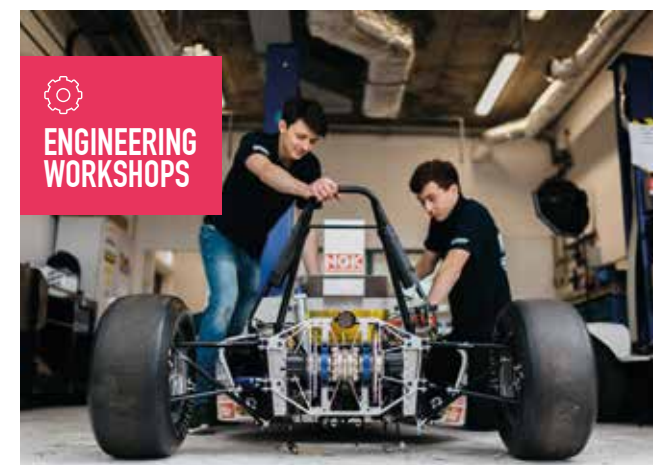
Our four industry-standard TV studios featuring the latest Sony equipment and a green screen MILO facility.

**WHEN YOU CHOOSE TO STUDY AT BIRMINGHAM CITY UNIVERSITY, YOU CAN BE CONFIDENT THAT YOUR LEARNING NEEDS ARE OUR TOP PRIORITY.**

In addition to high-quality facilities specific to your course, you will find a range of available learning resources which provide you with all the help you need to succeed.



TRADING ROOM



ENGINEERING WORKSHOPS



TEXTILE STUDIOS





 PHOTOGRAPHY STUDIOS



 LAW COURTS



 EASTSIDE JAZZ CLUB



 STUDY SPACE



 PRINT STUDIOS



 BIOMECHANICS LABS





## IT RESOURCES

You will have access to your own email account as soon as you accept an unconditional offer from us, free secure file storage and free University wi-fi, as well as the use of open-access computers within every library and faculty.

Our IT Help Desk is on hand to resolve any technical issues, while our printing system lets you print from any printer on campus (charges apply).

[www.bcu.ac.uk/it](http://www.bcu.ac.uk/it)



 CISCO NETWORKING LAB

## LIBRARY AND LEARNING RESOURCES

You will have access to a wide range of online and many print resources with 24/7 support. These have been selected in partnership with your lecturers, so they are quality assured and relevant to your course.

If you need help in person or online, our expert staff and backup services are there to help you get the best from the time you invest in developing your information-seeking skills.

We have been accredited to the Customer Service Excellence standard; we focus on delivery, timeliness, information, professionalism and staff attitude. We value collaborative working and include the student voice alongside our expertise to improve your services.

[www.bcu.ac.uk/library](http://www.bcu.ac.uk/library)



# OUR RESEARCH

RESEARCH AT BIRMINGHAM CITY UNIVERSITY UNDERPINS OUR LEARNING AND TEACHING, IS DEMAND LED AND INCREASINGLY INTERDISCIPLINARY.

**WE ARE COMMITTED TO DISCOVERING NEW KNOWLEDGE AND DELIVERING REAL BENEFIT TO CULTURE, INDUSTRY, SOCIETY AND THE ENVIRONMENT.**

Our researchers work across disciplines and with collaborators locally, nationally and internationally to produce research of high impact to society, the environment, culture and the economy. We have launched the UK's first Centre for Brexit Studies, researching all aspects of the UK's vote to leave the EU, including the impact on the British and European economies.

Our Research Excellence Framework (REF) 2014 results demonstrate the public benefit of our research to society and the economy, with almost 90% deemed to have either 'outstanding' or 'very considerable' impact.

[www.bcu.ac.uk/research-centres](http://www.bcu.ac.uk/research-centres)

## CASE STUDY:

### USING SMART TECHNOLOGY TO TACKLE GLOBAL WATER ISSUES



Birmingham City University has teamed up with Greek technology firm Singular Logic to help solve major global issues such as water loss and water wastage. The four-year project, named Internet of Things Smart Water Innovative Networks (IoT4Win), will see academics work alongside industry partners in the UK, Romania, Greece and Spain to find ways to improve the efficiency of water systems.

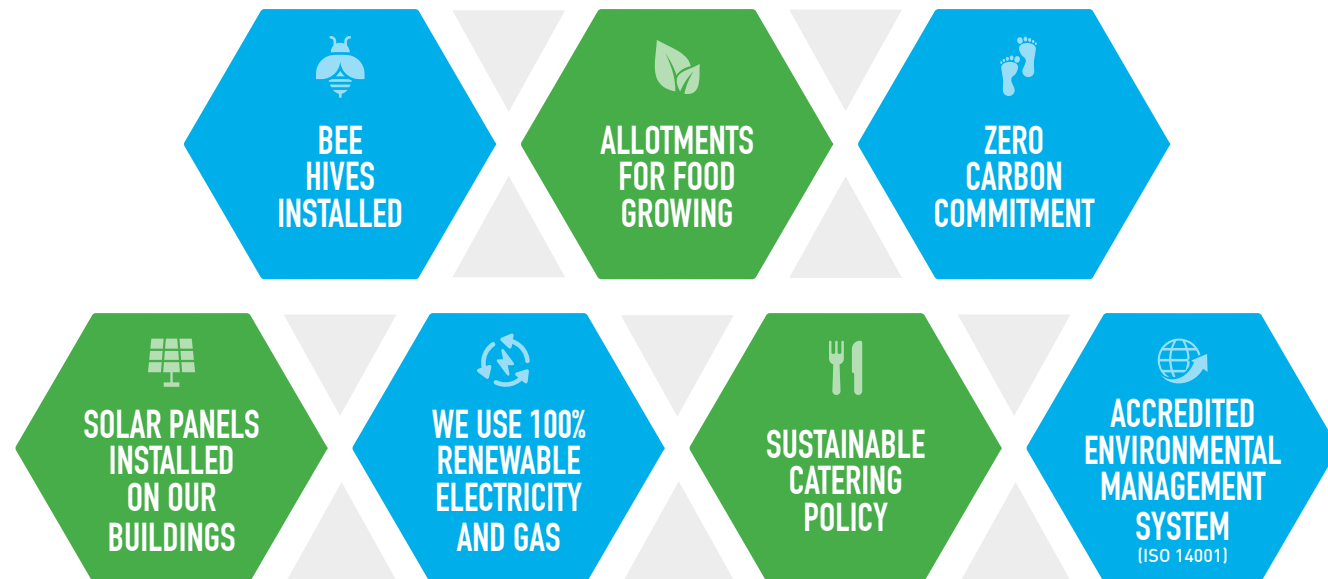
An array of smart technology sensors will be put to work to monitor and provide real-time updates on the quality, quantity and demand for water in urban areas and find new ways to provide accessible and affordable water.

The developed technology could have a major impact on future policy by finding ways to improve the efficiency and performance of water systems across the UK and Europe. Three researchers will be appointed to the scheme and earn PhDs from Birmingham City University as part of the project to create a legacy of knowledge in the smart water sector, which could transform the way water utility companies and authorities operate in the future.

[www.bcu.ac.uk/research-smart-tech-water](http://www.bcu.ac.uk/research-smart-tech-water)

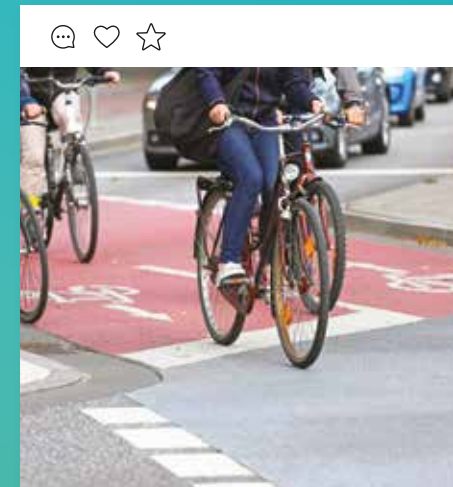


We recognise the important role we play in being part of the solution to climate change and sustainable development through top-class learning, teaching, research and day-to-day operation.

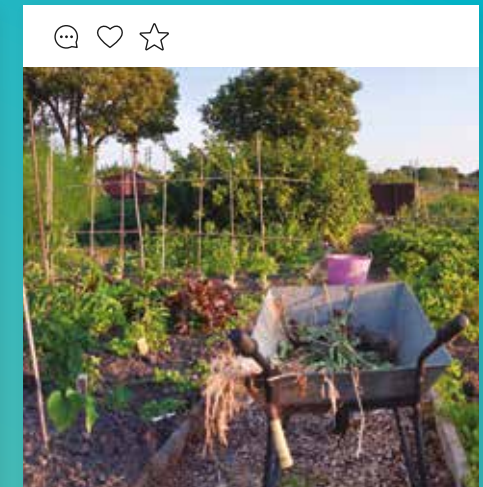


We launched a new Environmental Plan 2020–25, with a commitment to being a zero carbon institution and continually improving our environmental performance. Environmental sustainability is also a priority in our University Strategy.

You can be part of the Go Green journey throughout your time with us by getting involved with green events, initiatives such as the Hedgehog Friendly Campus campaign and our allotment areas, and joining the Earth Society.



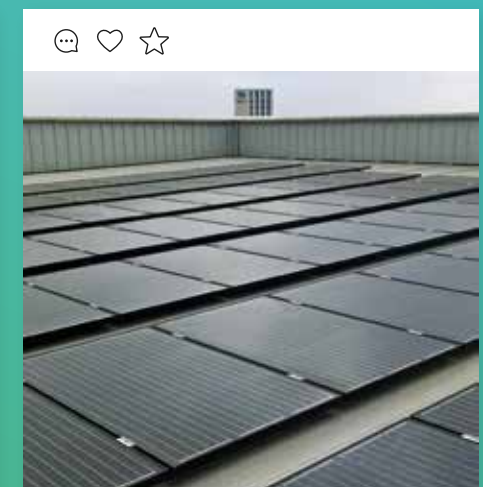
## Cycle scheme



## Allotments on campus



## Installing the BCU beehive



## Solar panels on our buildings

[www.bcu.ac.uk/environment](http://www.bcu.ac.uk/environment)  
[environment@bcu.ac.uk](mailto:environment@bcu.ac.uk)



# A PLACE TO CALL HOME



## AT A GLANCE



Over 2,000 rooms available



Shared kitchen, living areas, laundry facilities and social/study rooms



Easily accessible – close to public transport links



CCTV coverage and security staff at each site



Access to free wi-fi



**WANT TO SEE MORE?**

Visit [www.bcu.ac.uk/accommodation](http://www.bcu.ac.uk/accommodation) to view our halls.

**WE OFFER ACCOMMODATION AT VARIOUS LOCATIONS AROUND THE CITY. OUR HALLS OF RESIDENCE ARE NEAR TO OUR CAMPUSES AND PUBLIC TRANSPORT, SO YOU'RE IDEALLY LOCATED FOR STUDYING AND SOCIALISING.**

Leaving home for university is one of the biggest moves you will ever make. With the excitement, freedom and independence of living in halls, it is the perfect way to meet new friends.

All first-year, full-time home, EU and international students are guaranteed University accommodation if they have firmly accepted an offer in the main application cycle and apply by the deadline date.

[www.bcu.ac.uk/accommodation](http://www.bcu.ac.uk/accommodation)

Returning students in their second year and above are also able to re-book direct with some of our partner providers. If you decide that you want to stay in private accommodation, Birmingham City University Students' Union has its own letting agency, which we recommend to find private housing.

[www.bcusu.com/homes](http://www.bcusu.com/homes)

En-suite room at Staniforth House



Jennens Court social space







# YOUR STUDENTS' UNION



**BIRMINGHAM CITY UNIVERSITY STUDENTS' UNION (BCUSU) IS YOUR STUDENTS' UNION. WE'RE HERE TO MAKE SURE YOU HAVE THE BEST POSSIBLE EXPERIENCE THROUGHOUT YOUR TIME HERE. WE'LL BE WITH YOU EVERY STEP OF THE WAY!**

### INTERESTED IN SOCIETIES?

We sent our vloggers to try out some of the societies at BCU. See how they get on at [www.bcu.ac.uk/societies](http://www.bcu.ac.uk/societies).

We like to consider that you're part of our family and that you will be for the entire time you study here. Being a part of the BCUSU family means you have access to all of our amazing services and facilities, including:

**Top-notch support** and advice from our specially trained advisers on a range of topics, including money, health, academia and housing.

**On your side** throughout your time here: we guarantee you will be listened to and represented by us! We campaign on your behalf to make your student experience even better.

**Over 120 student groups** for you to get involved in, including sports, activities, religion, special interest and subject specific. As well as a great way to meet new people, being a member or leading a student group will look great on your CV! Volunteering projects on a local, national

or international scale will enhance your existing skills and help you to learn new ones.

**Our very own letting agency** to help you find your next student home without the hassle.

**Exciting entertainment** to make your social life as fun-filled as possible – it's not all academic, you know!

**A unique, Grade II listed pub** at the City Centre Campus with special prices on all our food and drinks and a special entertainment programme just for you.

**Shops on our campuses**, offering all of those essential items you'll need.

**We're run by students for students** and each year we ask all our students to vote for who they want to lead BCUSU.

[www.bcsu.com](http://www.bcsu.com)



Top-notch support and advice



Help finding your student home



Volunteering projects on a local, national or international scale



A unique, Grade II listed pub and Social Kitchen



Campus shops for all your daily student essentials



A voice throughout your time here



Over 120 student groups to get involved in



# GET INTO SPORT

✉ [sport@bcu.ac.uk](mailto:sport@bcu.ac.uk)

🐦 [BCUSport](#)

📘 [BCUSport](#)

📷 [BCUSport](#)



Over 25 sports clubs  
that you can join



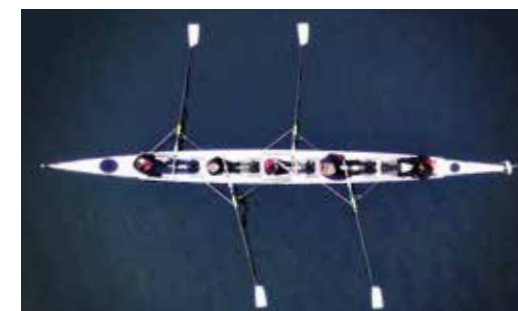
Complete beginners  
welcome



Meet new people from  
different courses



Sports scholarships  
available



## OUR PARTNERS

We have developed partnerships with a range of sporting bodies to enhance the student experience through placement, coaching and volunteering opportunities:

- Warwickshire County Cricket Club
- Team Birmingham Basketball Club
- Aston Villa FC
- City of Birmingham Swimming Club
- Moseley Rugby Club
- England Squash
- The Rugby Football Union
- Basketball England
- Edgbaston Priory Club.

**WHATEVER COURSE YOU STUDY, YOU'LL BE ABLE TO ACCESS A RANGE OF SPORT AND PHYSICAL ACTIVITY OPPORTUNITIES HERE AT BIRMINGHAM CITY UNIVERSITY. WHETHER YOU WANT TO COMPETE AT A HIGH LEVEL OR JUST TRY SOMETHING NEW, WE HAVE AN ACTIVITY SUITABLE FOR YOU!**

From rowing to rugby and table tennis to tennis, we have teams in over 25 different sports, with 18 of those sports offering the chance to compete in the inter-university BUCS (British University and Colleges Sports) league.

If competitive sport isn't for you, many of our students take part just for fun, enhancing their health and fitness, making new friends and providing an occasional break from their studies.

We also offer the chance to take part in courses to become a coach or referee, allowing you to contribute to the development of sport here or in the wider community.

The placement opportunities that arise from our contacts in the sporting world benefit all students, not just those on sport-related courses – from working for Aston Villa as part of the matchday media team to developing the software for an athlete monitoring app, there are a wide range of opportunities.

Our sports scholarships may consist of a cash payment to help with costs such as training and kit, and can also include practical support using our staff and facilities, such as sports therapy, conditioning and mentoring, potentially worth several thousand pounds. Any student who competes in sport at a high level may apply.



# FIRST-CLASS SUPPORT

ACCESSING ADVICE HAS NEVER BEEN EASIER. THROUGHOUT YOUR STUDENT JOURNEY, YOU WILL HAVE ACCESS TO OUR FULL RANGE OF SUPPORT SERVICES, INCLUDING CAREERS ADVICE, MENTORING, ADVICE ON FINANCE AND ACADEMIC MATTERS, PROFESSIONAL DEVELOPMENT EVENTS AND MORE.

## HOW TO ACCESS SUPPORT

If you have any questions, concerns or problems while at University, your School Office is the place to go. Our teams provide a personal, supportive and responsive service with staff on hand to answer course-related questions and point you towards where you can access any other specialist support you may need. You can also log an enquiry and book wellbeing sessions or advice appointments online.

## MENTAL HEALTH AND WELLBEING

Your health and happiness are important to us and there are a wide range of support services available in areas including disability, counselling, mental health and wellbeing, and healthcare. We offer ongoing support, workshops and events such as our Mental Health Day which has previously included tea and talk sessions, music therapy, and therapy dogs!

### Counselling

The Mental Health and Wellbeing team consists of counsellors, mental health advisers and wellbeing advisers. The team offers free, confidential appointments 51 weeks of the year, Monday to Friday, across both main campuses, on the phone or online.

## STUDY SUPPORT

### Centre for Academic Success

The Centre for Academic Success aims to help you develop the skills you need to progress and successfully complete your course. They can help with:

- academic essay and report writing
- English
- referencing
- dissertations
- presentation skills
- mathematics and statistics
- computing and programming
- project management
- study skills.

This support is offered through a range of tutorial sessions, workshops, online resources and feedback on your assignment drafts.

### Success+ assessment centre

Our new assessment centre provides a controlled environment for students on certain courses to take some formative (ongoing) and summative (end of module) assessments, at a time to suit you, within designated windows.

The aim of the centre is to add flexibility around assessments, as well as freeing up staff time to support you in other ways.

## STUDENT PARENTS

### Childcare

We recognise the commitment required by student parents and want to help you focus on your studies to get the most out of university life. We can offer childcare advice on areas such as how to choose the right nursery for you and your child, and government support and benefits.

## HEALTHCARE

### Register with a doctor

We strongly encourage students new to Birmingham to register with a GP practice in the area. You may choose to register with the University's own partner practice, but this is not compulsory. The most important thing is that you do register with a local practice so that you have timely access to healthcare whenever you need it.







## DISABILITY SUPPORT

Whether you have already told us about your disability or Specific Learning Difficulty (such as dyslexia), or you have a long-term health condition for which you think you may need some support at university, our Disability Support Team will be able to work with you to find the support you need.

We recommend talking to us as soon as you can so that you can get the greatest benefit out of any support we can make available to you.

If you're offered a place at the University, our Pre-entry Disability Adviser will contact you by email to provide you with information about support, and invite you to give details about your specific learning difficulty or disability.

We make individual recommendations to your School about the support you'll need from them, such as:

- particular exam arrangements
- extra time for assignments
- handouts in advance of lectures
- written material in a particular format
- being allowed to take a note taker or voice recorder into lectures.

### Applying to university with a disability

We are happy to arrange for you to meet with a Disability Adviser at the University before you make a formal application. If you're planning to attend one of our Open Days, the Disability Support Team will be available on the day, and you're welcome to contact us beforehand to make an appointment with a Disability Adviser if you wish. Students are invited to tell us about any disability as soon as possible, using the form at [www.bcu.ac.uk/disability-form](http://www.bcu.ac.uk/disability-form).

The decision about whether to offer you a place at Birmingham City University will be made on academic grounds and in accordance with our Admissions Policies. Your disability will not affect this decision.



## STUDENT SUPPORT

### LGBTQ+ support

Talking about issues surrounding sexuality and gender can sometimes be difficult with friends and family. The Wellbeing Team offers support to students who are questioning their sexuality, are worried about 'coming out', are reconciling their sexuality and/or gender with their identity, and any other concerns they may be experiencing.

The Wellbeing Team can offer one-to-one confidential support and advice and can signpost to other organisations and support when appropriate. A member of our team is accredited as a 'Pink Therapist' and can offer specialist LGBTQ wellbeing support, as well as LGBTQ awareness training.

### Care leavers

The University is committed to supporting all of its students, and has a dedicated support service for those who come from a background in care. We recognise that some of these students may face particular challenges in relation to accommodation and finances, and may have experienced disruption in their schooling.

## STUDENT GOVERNANCE

### Complaints

Your time at university is important to us and we want to help you get the most out of your studies. If you think that we've fallen short in some way, you can let us know and we'll work with you to try to resolve it.





# WORKING IN THE UK AFTER YOUR COURSE

## INTERNATIONAL STUDENTS WHO APPLY THROUGH THE GRADUATE IMMIGRATION ROUTE (GIR) WILL BE ABLE TO STAY IN THE UK AND WORK.

The Graduate route is a work route for international students who are Bachelor's, Master's or PhD graduates (or other recognised professional qualified graduates) of a UK university who wish to gain valuable work experience after their studies.

International students on this work route can remain in the UK to work (or seek work) for two years, and PhD graduates can remain for three years. GIR applicants do not need a sponsor or any endorsement by an employer or university.

The route does not count towards settlement – however graduates will be able to apply to other routes at the end of your stay, for example, the Skilled Worker, Global Talent or Innovator routes.

Note that new dependents are not permitted on the GIR. GIR applicants can only apply with dependents if their existing dependents were being sponsored while under the student route visa.

For further information, please go to: [www.bcu.ac.uk/international/protecting-your-student-visa/working-after-your-studies](http://www.bcu.ac.uk/international/protecting-your-student-visa/working-after-your-studies)

[www.ukcisa.org.uk/Information--Advice/Working/Working-after-studies](http://www.ukcisa.org.uk/Information--Advice/Working/Working-after-studies)

## QUESTION: HOW CAN BCU PREPARE YOU FOR THE GRADUATE IMMIGRATION ROUTE?

### ANSWER: THROUGH GRADUATE+

Graduate+ is an award framework which complements your degree. It is designed to capture and provide evidence to help you grow as a future graduate while preparing you for your career aspirations.

As a BCU student, you are an automatic member of the Graduate+ community, and we want to encourage you to get involved in the range of activities, events and opportunities available to you both inside and outside the university.

This empowerment is a fantastic opportunity for you to develop and test your skills and graduate capabilities while getting you to step outside your comfort zone.

You will have a chance to experience and develop new ideas while making long-lasting network and social contacts throughout your time at the university and beyond. Graduate+ is the first scheme to receive employability endorsed status from Advance HE.

Further information can be read at: [www.bcu.ac.uk/grad-plus](http://www.bcu.ac.uk/grad-plus)

## Graduate+

*Your award, your skills, your future*

BCU Graduate+ Award activities include:

- Volunteering
- Part-time work
- Studying abroad
- Placements
- Societies and sports teams
- Learning a language
- Career tools



# GO ABROAD

As a student at Birmingham City University, you may have the opportunity to study abroad at one of our partner universities as part of an international exchange programme linked to your degree.

## TURING SCHEME

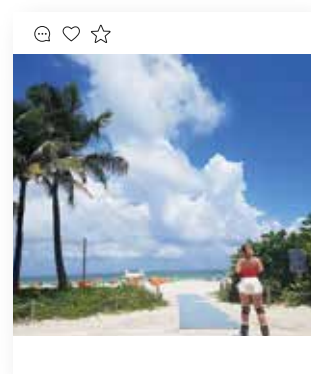
The Turing Scheme is the UK government's scheme to provide funding for international opportunities in education and training across the world. It supports Global Britain by providing an opportunity for UK universities to offer their students life-changing experiences to study or work abroad.

## BCU INTERNATIONAL SUMMER SCHOOL

Our International Summer School offers you the perfect opportunity to spend three weeks sampling UK university life, as well as giving you the chance to enhance your academic skills and visit some of the UK's historic towns and cities.

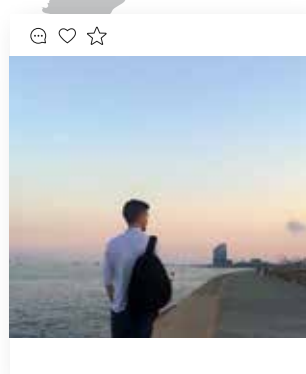
[www.bcu.ac.uk/go-abroad](http://www.bcu.ac.uk/go-abroad)

[www.bcu.ac.uk/summer-school](http://www.bcu.ac.uk/summer-school)



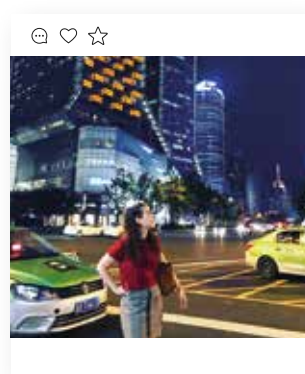
**NICOLE WALSH**  
Mexico

I'd never travelled outside of Europe before so when I had the opportunity to go to Mexico, I jumped at the chance. I went by myself and learned how to meet new people and come out of my comfort zone. I've also learned that Mexicans are the friendliest people I have ever met!



**CONOR DENNEHY**  
Spain

My Erasmus year in Barcelona was truly amazing! I met many people from around the world with different cultures and traditions, while also immersing myself in the Spanish culture. The architecture, the food and the lifestyle are only a few of the amazing aspects of your study abroad life that you will experience.



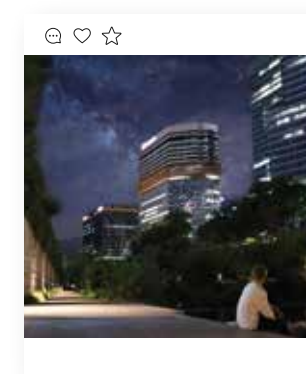
**CLAUDIA FERRARETTO**  
China

I could never have imagined being able to take part in such an unforgettable experience, in an amazing, inspirational, and vibrant city. Thanks to the summer school at one of BCU's partner universities, I had the opportunity, not only to grow as a person, but also to enhance my experiences and background to apply to my studies and on a future career!



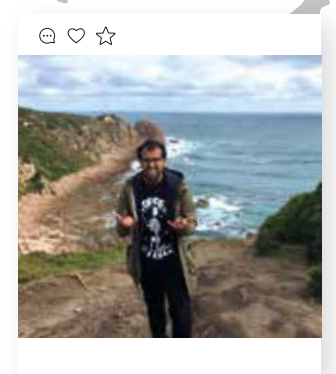
**KUSH LAD**  
Taiwan

Who knew such a tiny island could overflow with so much love, kindness and memories for a lifetime. Yuntech enabled us to learn basic Mandarin in just 10 days, guided and taught by the most passionate teachers. The study partners welcomed us, they immersed us into their culture, their families, and the beauty of Taiwan in each of their cities or districts.



**JACK HICKS**  
South Korea

South Korea was perhaps the most interesting and significant experience of my life. Travelling to the other side of the world has opened my eyes and changed my perspective on life forever.



**HASSAN UL-HAQ**  
Australia

My experience in Melbourne is one that I will never forget and it has also allowed me to experience another country's creative industry. Not only this but it has allowed me to meet some incredible individuals who have inspired me and allowed me to think outside my own creative bubble.



# ON COURSE TO A CAREER

## GAIN A COMPETITIVE ADVANTAGE

Our Graduate+ programme allows you to build up experience through a range of extracurricular, employment-related activities. You will work with our Graduate+ team to undertake a skills audit and devise a personal programme of activities and collate evidence for what you've done, using an online e-portfolio.



## WORKING WITH INDUSTRY

Many of our courses offer you the chance to work on live projects with businesses or get involved with community projects related to your course. Our business innovation centre, STEAMhouse, features a range of co-working, artist production, incubation and networking facilities for small and medium-sized businesses in the West Midlands.

## EARN WHILE YOU LEARN

Our students are given the opportunity to fill many part-time temporary positions within the University. This allows you to work while you study with us, fitting the job around your course. By taking part in the scheme, you will gain valuable experiences and employability skills, including taking part in a realistic application process, enhancing your prospects in the job market.



## COURSES BUILT FOR YOUR FUTURE

Our courses were designed with input from current students and industry professionals, ensuring they meet your needs and those of potential employers. Employability skills, enterprise and practice-based projects are built into the curriculum, giving you experience of the career you may wish to pursue.

A range of learning, assessment and feedback methods are used and you'll have the chance to study a range of optional modules, so you can tailor your learning to your own interests.



## ACHIEVE YOUR FULL POTENTIAL

To support you in achieving your full potential, the Centre for Academic Success is available to help with your study, literacy and numeracy skills. You can attend one of our workshops or book a one-to-one tutorial to discuss aspects of your work.





***“The global leisure sector is growing all the time, and we want our students to be at the forefront of the industry in the future. That is why we’re giving them the skills they need to succeed.”***

**RICHARD ODDY**  
Senior Lecturer in Management

Richard introduced the new Event, Venue and Experience Management course in our Business School, the first course of its kind in the UK to be accredited by the Chartered Management Institute.



# MEET THE STAFF WHO INSPIRE

**AT BIRMINGHAM CITY UNIVERSITY, YOU  
WILL LEARN FROM THOSE WHO HAVE  
BEEN THERE AND DONE IT.**

Many of our 1,800-strong team of academic staff are practising professionals and experts in their sector, including 10 National Teaching Fellows.

You will receive first-hand and up-to-date knowledge directly from those in the know, be it health practitioners, real estate specialists or professional musicians.

**To find out more, visit [www.bcu.ac.uk/our-staff](http://www.bcu.ac.uk/our-staff).**





***“My goal is to use my industry insight to teach students different ways of solving problems surrounding digital forensic investigations. This involves building on the technological knowledge they don’t realise they already possess.”***

**< RICHARD HALE**  
Lecturer of Computer Forensics

An expert in Digital Forensics, Richard first started working in the field in 2008. He moved to academia with extensive industry experience after working with two of the largest private digital forensics companies in the UK.

***“Mooting is a great way to practice and develop your legal skills, so we wrote a book to help students realise their potential. The experiences you’ll gain will benefit you in and out of the classroom.”***

**DR SARAH COOPER >**  
Researcher in Law

Dr Cooper co-authored the book Preparing to Moot, after she herself was a successful part of our mooting team during her time studying in our School of Law.



***“Our approach is to embed human-centric thinking into our teaching and research, and develop solutions that provide both a healthy environment and healthy communities.”***

**PROFESSOR LYNSEY MELVILLE >**  
Director of the Centre for Low Carbon Research

An expert in low carbon technology who is currently leading research into the generation of energy from organic material, such as algae.



***“My teaching has enabled our students to research the UN and participate in the meetings of the Human Rights Council. This is world-leading teaching that enables BCU students to help change the world.”***

**< PROFESSOR JON YORKE**  
Professor in Human Rights

An expert in international law and an adviser on the death penalty to the United Nations, the European Union, and the Council of Europe.



***“My role is to make you think and question, to make you question what you think you know, and then to discover new ways of thinking, questioning and understanding.”***

**ROBERT GIBB >**  
Course Director of Postgraduate Studies within the School of Visual Communication.

A professionally experienced academic practitioner in a number of different areas, including Photography, Curation, and Fine Art.





# OUR GRADUATES

WHETHER IT IS SETTING UP SUCCESSFUL COMPANIES OR CREATING PUBLISHED WORK, OUR GRADUATES ARE SHAPING THE WORLD WITH THE SKILLS THEY HAVE HONED RIGHT HERE.

TO SEE MORE OF OUR FORMER STUDENTS' ACHIEVEMENTS, VISIT [WWW.BCU.AC.UK/STORIES](http://WWW.BCU.AC.UK/STORIES).

## BLOGGER

**LILY PEBBLES**

BA (Hons) Marketing, Advertising and PR  
- UK -

When Lily began her beauty and lifestyle blog as part of a digital marketing module, she had no idea how many doors would open up for her. Now she runs her YouTube channel and other social media platforms full-time, has become a *Sunday Times* bestselling author with her book *The F Word*, co-hosts an iTunes number 1 podcast 'At Home With' and collaborates with brands such as Waitrose and The White Company.



## GRAPHIC ARTIST

**YIFAN LING**

MA Visual Communication  
- China -

Yifan has been creating manga comics professionally since she graduated in 2006. Now she has published more than 20 books internationally and her own online manga story 'Guarding' is now being developed into a television show and film.



## JOURNALIST

**LAVANYA LAKSHMINARAYANAN**

MA Journalism  
- India -

Since graduating in 2018 Lavanya has gone on to become a subeditor for The Hindu, a daily newspaper popular in India. She also reports on culture, entertainment and societal topics.



## TECHNOLOGIST

**IBRAHIM MAGAJI**

MSc Enterprise Systems Management  
- Nigeria -

Since graduating, Ibrahim has continued to stay in the UK with the help of the University's Tier 1 Graduate Entrepreneurship Visa endorsement.\* He is now the CEO of his own company, Digital Green Intercontinental, aiming to harmonise ICT technology with commercial agriculture.

\*Please note you can no longer apply for a new Tier 1 (Graduate Entrepreneur) visa. If you want to set up a business in the UK you can apply for a Start-up visa instead.



## MARKETER

**NICK DEARMUN**

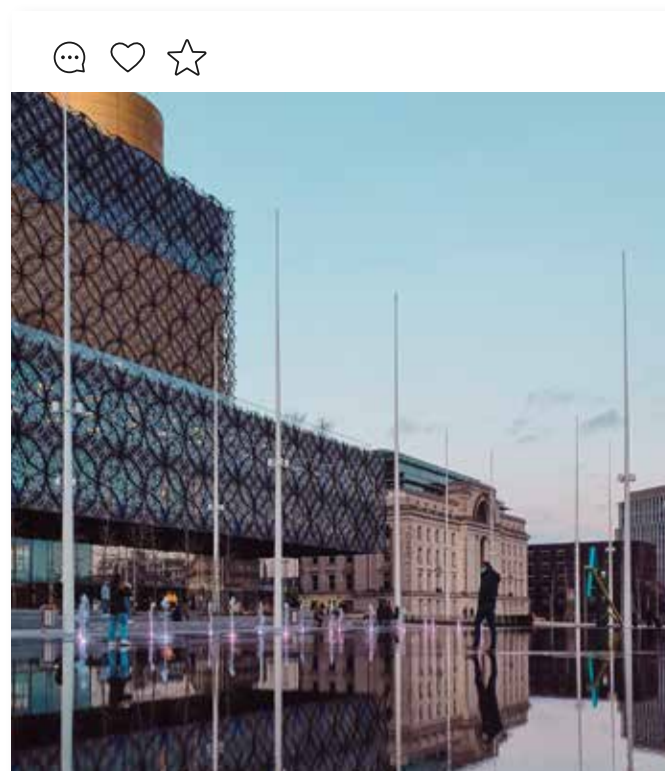
BA (Hons) Business and Advertising  
- UK -

After graduating, Nick worked as an intern in various advertising agencies before getting a job as a marketing assistant for a record label. As a marketing manager for Columbia Records/Sony Music, he worked with Rag'n' Bone Man on his number 1 album, and with Calvin Harris across multiple releases including several number 1 singles. His latest role is as an Account Director at digital agency AKQA Los Angeles.



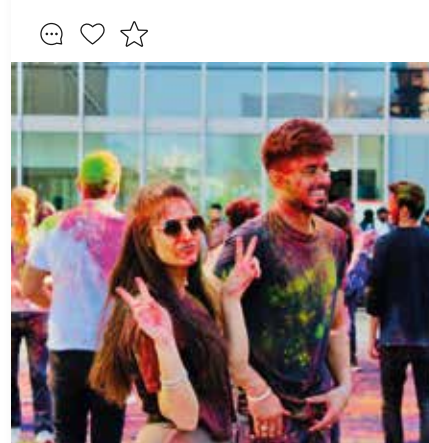
# THE VIEW FROM BCU

WANT A TASTE OF WHAT STUDENT LIFE IN THE CITY IS REALLY LIKE? TAKE A LOOK AT OUR INSTAGRAM PROFILE TO SEE WHAT'S GOING ON AROUND OUR CAMPUSES AND THE CITY.



**butrimaitte**

It's that point in the year where we find ourselves reflecting on the year gone by. What's your favourite memory to reflect on from this year?



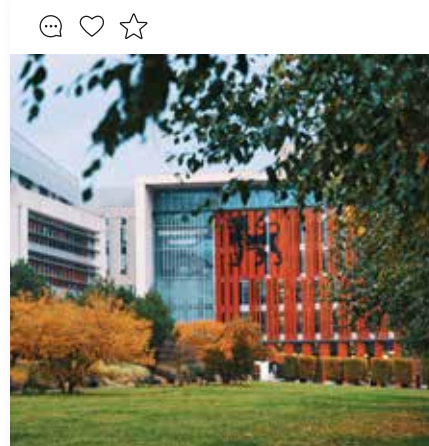
**willrobins\_**

Holi celebrations created a seriously colourful vibe on campus today!



**shumixx**

These people make my heart full



**michaelpwbutlerphotography**

A colourful #throwbackthursday this week to when we still had all of the lush autumn leaves.



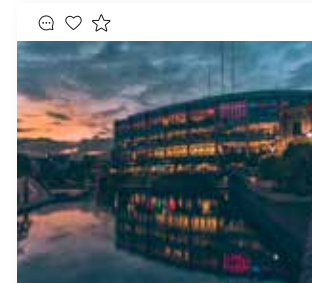
**archierowanlocke**

Oof. Look at Chinatown glow! Anyone else treating themselves to a cheeky weekend takeaway?



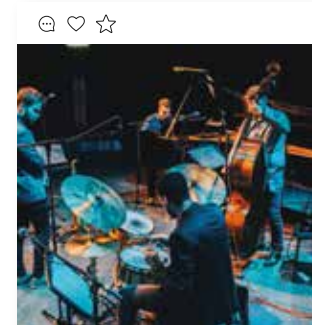
**bephgravephotography**

Busy day working in the photography studio on campus!



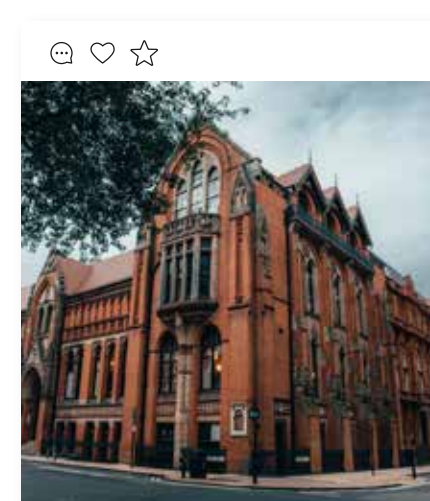
**ethandavis.photography**

Daydreaming of summer evenings along the canal with your besties and a bevvie.



**harryharryharryharry**

Swung by to catch @edimusicmay at the Royal Birmingham Conservatoire Jazz Club this evening.



**samwich\_flynn**

The School of Art is such a gorgeous and inspiring building, the place where BCU began.



**jaspreetsinghnocaste**

Loving seeing campus covered in snow, especially for all the international students who haven't experienced it before.



## MEET OUR VLOGGERS

Our students share their experiences and advice on all aspects of applying and preparing for university.

[www.bcu.ac.uk/vlogs](http://www.bcu.ac.uk/vlogs)

### A LEVELS / BTEC VS UNIVERSITY



### Is university hard?

Wondering what the difference is between A Levels / BTEC and University? Inderpreet talks you through the main differences.

### PREPARING FOR UNIVERSITY



### Preparing for university

How should you prepare for university? Our vloggers are here to help you settle your pre-uni nerves by offering their advice.

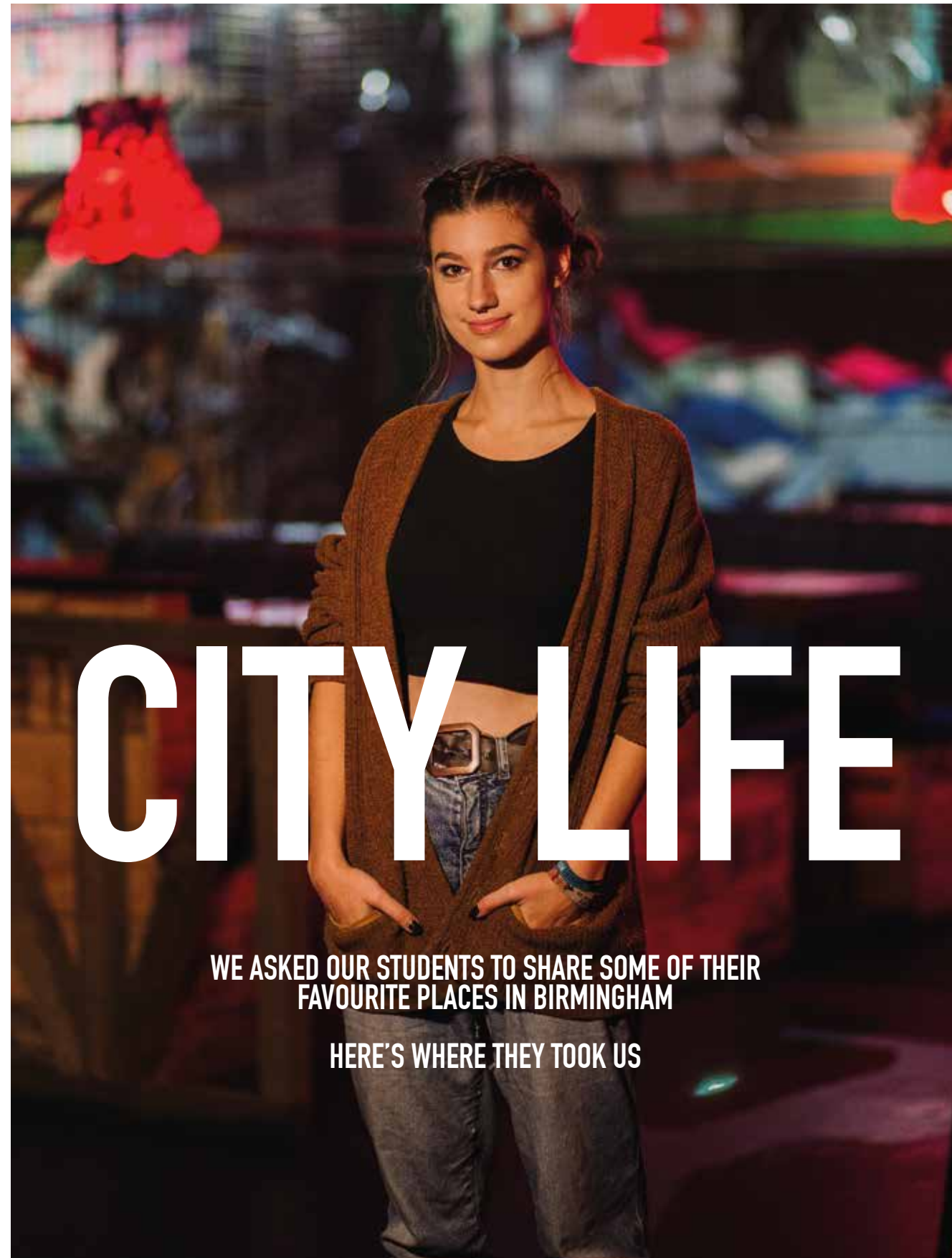
### WHY CHOOSE BCU



### Why choose BCU?

Wondering why you should study at Birmingham City University? Jamie shares his top three reasons for coming to BCU.





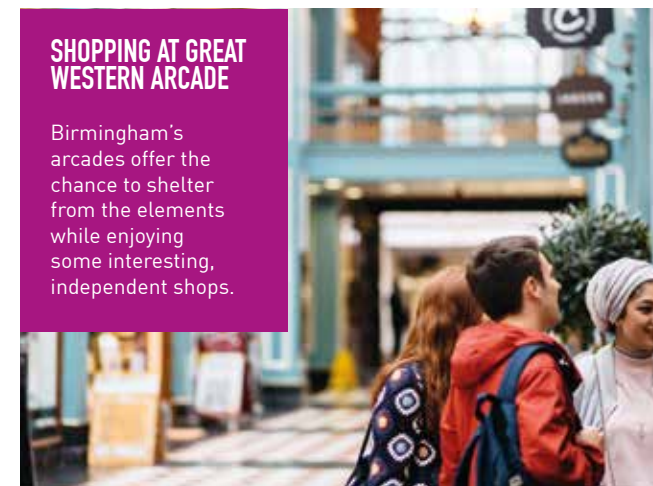
WE ASKED OUR STUDENTS TO SHARE SOME OF THEIR  
FAVOURITE PLACES IN BIRMINGHAM

HERE'S WHERE THEY TOOK US



### STREET FOOD AT DIGBETH DINING CLUB

Head down to Digbeth on a Friday or Saturday for an ever-changing street food selection at Digbeth Dining Club.



### SHOPPING AT GREAT WESTERN ARCADE

Birmingham's arcades offer the chance to shelter from the elements while enjoying some interesting, independent shops.



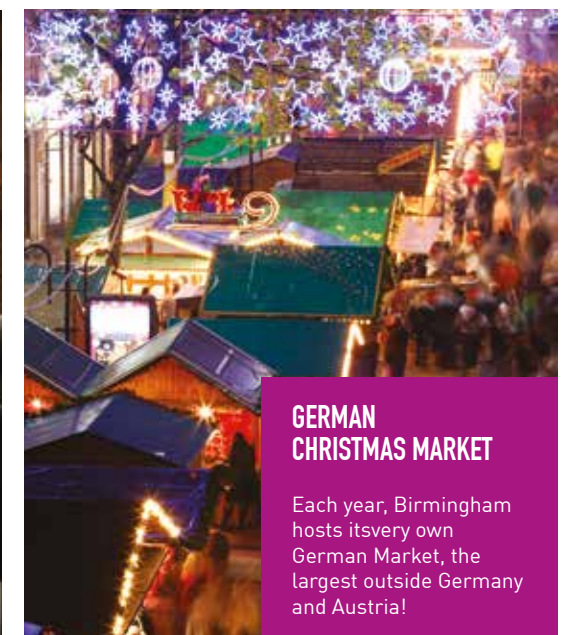
### STREET ART IN DIGBETH

Digbeth is well known as Birmingham's cultural hub, with art studios, creative businesses and street art aplenty.



### LANE 7, THE MAILBOX

This is bowling like you've never seen it before, complete with walnut lanes, retro arcade games and a UV-lit karaoke bar.



### GERMAN CHRISTMAS MARKET

Each year, Birmingham hosts its very own German Market, the largest outside Germany and Austria!



### BULLRING SHOPPING CENTRE

Home to a variety of home, beauty and clothing shops, you'll never feel like you're missing out on the latest fashion trends.



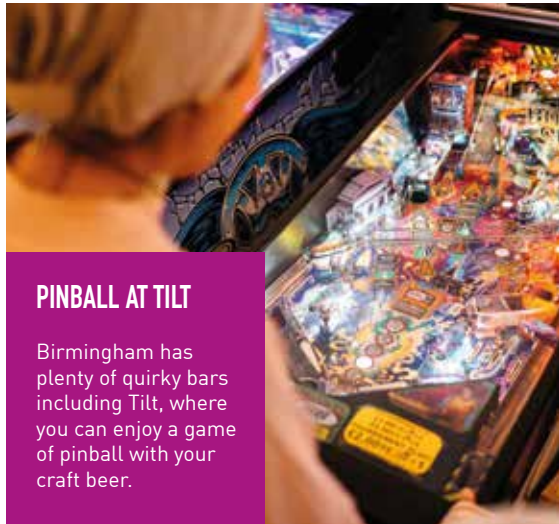
### GHETTO GOLF

This indoor crazy golf venue incorporates graffiti, street food and cocktails for a truly unique night out!



### PINBALL AT TILT

Birmingham has plenty of quirky bars including Tilt, where you can enjoy a game of pinball with your craft beer.



### PANCAKES AT CHERRY REDS

Set yourself up for the day with a tasty breakfast from one of Birmingham's popular cafés.



### VINTAGE SHOPPING AT COW

Fancy a bit of shopping? As well as big-name stores in the Bullring, we have plenty of quirky independent stores like vintage clothes outlet Cow.



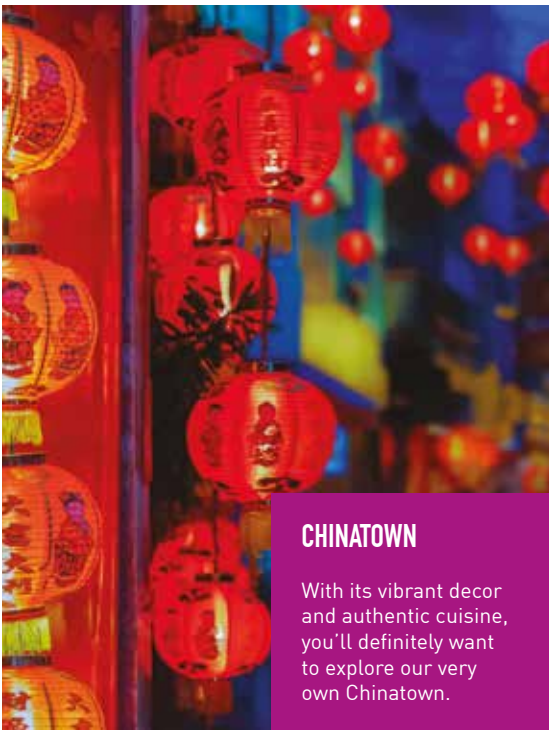
### BURGERS AT ORIGINAL PATTY MEN

Having started out at Digbeth Dining Club, the OPM guys now have their own permanent outlet with some of the best burgers in town.



### CHINATOWN

With its vibrant decor and authentic cuisine, you'll definitely want to explore our very own Chinatown.



### HOT CHOCOLATE AT BOND

There are plenty of places to warm up with a hot drink such as Bond, a café complete with canalside seating.



### TAKE A WALK ALONG THE CANAL

Our huge network of canals stretches across the city and is perfect for strolling, jogging or cycling.



## THERE'S PLENTY MORE TO SEE AND DO IN BIRMINGHAM - FROM MUSIC AND CULTURE TO TOP-CLASS SPORT, WE HAVE ALL YOUR INTERESTS COVERED.

### MUSIC

There's a host of great live music destinations to be found across the city - from sticky-floored pubs and intimate jazz bars to the famous O2 Academy and Jools Holland's Jam House.



### SPORTS

Whether you're interested in sport as a participant or a spectator, Birmingham has plenty to offer. The city is set to host the Commonwealth Games in 2022, underlining its reputation as a destination for major sporting events. There are three big-name football clubs nearby and international cricket takes place at Edgbaston.



### CULTURE

With a world-class symphony orchestra, royal ballet company and theatres, Birmingham has some of the finest contemporary arts venues in the country, while one of the city's most exciting facilities is the state-of-the-art, £188 million Library of Birmingham.



### RELAXING

If you want to get out and about, the city has over 8,000 acres of park and open space, making it one of the UK's greenest cities.





# ARTS, DESIGN AND MEDIA

OUR FACULTY OF ARTS, DESIGN AND MEDIA INCLUDES ROYAL BIRMINGHAM CONSERVATOIRE FOR MUSIC AND ACTING COURSES, A LEADING PROVIDER OF MEDIA TRAINING, AND EUROPE'S BIGGEST JEWELLERY SCHOOL.

The Faculty incorporates the former Birmingham Institute of Art and Design, an internationally-renowned centre for creative education with a history dating back to 1843. Our links with industry have included Rolex, Swatch, Saatchi and Saatchi, Goldsmiths, the BBC, the Royal Shakespeare Company, the City of Birmingham Symphony Orchestra, The Brits, Glenn Howells Architects, Sony Computer Entertainment Europe, SEGA and Rockstar North.

## Our subject areas include:

- Acting and Theatre
- Architecture and Design
- Art
- English
- Fashion and Textiles
- Jewellery and Silversmithing
- Media and Multimedia Technology
- Music
- Visual Communication.

## Facilities include:

- Print, textiles, wood, ceramics and glass workshops
- Photography studios and darkrooms
- Digital print and pattern-making facilities
- Four TV studios
- Green screen MILO studio
- Radio studio and editing suites
- Light and airy art studios

- Gallery and installation space
- Fine art library
- Exhibition space and specialist library
- Digi.lab - a digital lab for prototyping and 3D printing
- Jewellery, silversmithing and computer-aided design equipment
- 10 specialist acting studios complete with temperature regulation and sprung floors
- Five public performance venues – including the 500-seat Bradshaw Hall and the Eastside Jazz Club, situated in our £57 million Royal Birmingham Conservatoire building
- An experimental black box performance space called the Lab
- Seven industry-standard recording studios and post-production facilities.







## ARTS, DESIGN AND MEDIA SCHOOLS

### Birmingham Institute of Creative Arts

We comprise of three Schools: Art; Games, Film and Animation; and Visual Communication. Within this large institute, students get to experience a range of subjects from Fine Art to Future Media, Games Design to Digital Marketing. Visual Communication alone offers Design for Performance, Graphic Design, Illustration and Photography.

### Birmingham Institute of Jewellery, Fashion and Textiles

We bring together two internationally renowned schools, with almost 130 years of heritage. Over four sites, the institute's cutting-edge workshops and facilities create a dynamic culture for innovation and research. Whether worn, carried on the body, or part of the environment, we design and make award winning objects and artefacts through old and new technologies.

Together we produce graduates with the knowledge and technical skills to carve rewarding careers in industry.

### Birmingham Institute of Media and English

We produce talent that's ready to go – critical makers who can contribute from day one. Our diverse range of courses cover everything from English Literature to Music Industries and our staff don't just know the industry, they hail from it.

We are part of Birmingham's economic and cultural renaissance, with a national reputation, and international links that open up a world of opportunities for students to learn the skills they need to be industry ready.

### Birmingham School of Architecture and Design

Founded in 1908, we are a wide-ranging design house which constitutes design through the scales. The School embodies the concept of an Enterprise Education to equip students for life beyond graduation, through our extensive relationships with the professions and industries. We blur the boundaries between academia and practice to ensure our graduates are confident, independent, and well-rounded citizens and professionals.

### Royal Birmingham Conservatoire

Our conservatoire is a world-class creative institution providing exceptional training for the musicians, actors, stage managers and theatre professionals of the future.



ARTS, DESIGN AND MEDIA COURSES

Undergraduate

BA (Hons) Acting	BA (Hons) Fashion Business and Promotion	BMus (Hons) - Music / Instrumental and Vocal Performance / Composition / Music Technology
BA (Hons) Applied Linguistics (Level 6)	BA (Hons) Fashion Design	
BA (Hons) Applied Theatre (Community and Education)	BA (Hons) Filmmaking	BA (Hons) Music Industries
BA (Hons) Architecture	BA (Hons) Film and Screenwriting	BSc (Hons) Music Technology
BA (Hons) Art and Design	BA (Hons) Film Studies	BA (Hons) Photography
BA (Hons) Art and Design with Creative Technologies	BA (Hons) Fine Art	BA (Hons) Popular Music
BA (Hons) Art Business (Level 6/Top Up)	BA (Hons) Garment Technology	BA (Hons) Product and Furniture Design
BA (Hons) Costume Design and Practice	BSc (Hons) Gemmology and Jewellery Studies	BA (Hons) Public Relations and Media
BA (Hons) Design for Future Living	BA (Hons) Graphic Communication	BA (Hons) Sports Journalism
BA (Hons) Design for Performance: Theatre, Film and Live Events	BA (Hons) Horology	BA (Hons) Stage Management
BA (Hons) Design Management (Level 6 Top-up)	BA (Hons) Illustration	BA (Hons) Textile Design
BSc (Hons) Digital Film Production	BA (Hons) Interior Architecture and Design	BA (Hons) Textile Design: Embroidery
BA (Hons) Digital Marketing	BMus (Hons) Jazz	BA (Hons) Textile Design: Fibre Art
BSc (Hons) Digital Media Technology (China and UK delivery)	BA (Hons) Jewellery and Objects	BA (Hons) Textile Design: Knit and Weave
BA (Hons) English	HND Jewellery and Silversmithing	BA (Hons) Textile Design: Print and Surface Design
BA (Hons) English and Creative Writing	BA (Hons) Jewellery and Silversmithing - Design for Industry (Level 6 Top-up)	BA (Hons) Textile Design: Retail, Business and Marketing
BA (Hons) English and Drama	BA (Hons) Journalism	BA (Hons) Video Game Design
BA (Hons) English and Journalism	BA (Hons) Landscape Architecture	BSc (Hons) Video Game Development
BA (Hons) English Language and Literature	BA (Hons) Landscape Architecture (China and UK delivery)	BA (Hons) Video Game Digital Art
BA (Hons) English Literature	BA (Hons) Landscape Architecture with Urban Design	BA (Hons) Visual Communication (Graphic Communication – China)
BA (Hons) Fashion Branding and Communication	BA (Hons) Media and Communication	BSc (Hons) Visual Effects
	BA (Hons) Media Production	

Postgraduate

MA/MFA Acting	MA Feature Film Development	MA Textile and Surface Design
MArch Architecture	MA Film Distribution and Marketing	MA Urban Design
MA Art and Design: Interdisciplinary Practices	MA Fine Art	MSc User Experience Design
MA Arts and Education Practices	MA/MSc Future Media	MA/MSc Video Game Development
MA Arts and Project Management	MSc Gemmology	MSc Video Game Enterprise, Production and Design
MMus Brass Band Conducting	MMus/PgDip/PgCert Instrumental Performance	MA Visual Communication
MMus Composition	MA Interior Architecture and Design	MMus Vocal Performance
MA Contemporary Arts China	MMus Jazz	
MMus Choral Conducting	MA Jewellery and Related Products	
MMus Composition	GradDip Jewellery and Related Products	
MA Cosmetics Branding and Promotion	MA Landscape Architecture	
MA Creativity, Making and Innovation Practice	MA Landscape Architecture with Conversion	
MA Creative Writing	MA Luxury Brand Management	
MA Data Journalism	MA Luxury Jewellery Management	
MA Design Management	MA Media and Cultural Studies	
MA Design and Visualisation	MA Media Production	
MA Design Management	MA Multiplatform and Mobile Journalism	
MA English Literature	MA Musicology	
MA Event, Festival and Exhibition Management	MMus Music Technology	
MMus/PgDip/PgCert Experimental Performance	MMus Orchestral Conducting	
MA Fashion Design	MMus Orchestral Performance (Strings)	
MA Fashion Management	MA Product and Furniture Design	
MA Fashion Promotion	AdvPgDip Professional Performance	
MA Fashion Styling	MA/MFA Professional Voice Practice	
	MA Public Relations	



Ranked 5th in the UK for drama and dance (Guardian League Table 2021)



# BUSINESS, LAW AND SOCIAL SCIENCES

THE FACULTY OF BUSINESS, LAW AND SOCIAL SCIENCES IS A GLOBALLY ORIENTED FACULTY, DRAWING ON THEORIES AND PRACTICE FROM AROUND THE WORLD TO INFORM OUR LEARNING ENVIRONMENT.

Birmingham City Business School is a leading professionally oriented, international business school focused on connecting you with every aspect of the world of business and innovation. While we have a unique relationship with the extraordinary city we're rooted in, renowned for its industry and commerce, our courses are designed to meet the needs of businesses across the globe.

Birmingham City School of Law has been at the forefront of innovative law teaching for more than 40 years, specialising in social justice and access to justice, with leading academics who are experts in human rights and the death penalty, as well as civil and social issues. Our globally oriented, innovative law degrees are tailor-made for law professionals who want to make an impact on the world.

At Birmingham City School of Social Sciences our mission is to make sense of the world. Our students and academics work together

across the disciplines of Criminology, Psychology and Sociology to develop insights into society. We also apply our research in real world settings on an international scale, working with communities, prisons, hospitals, schools and the police to understand, and influence, social change.

**Accreditations include:**

- Association of Chartered Certified Accountants (ACCA)
- Chartered Institute of Management Accountants (CIMA)
- Chartered Institute of Personnel and Development (CIPD)
- Chartered Management Institute (CMI)
- Chartered Institute of Marketing (CIM)
- Chartered Institute of Internal Auditors (IIA)
- The British Psychological Society (BPS)
- Solicitors Regulation Authority and Bar Standards Board.

**Our subject areas include:**

- Accounting, Economics and Finance
- Business, Management and Marketing
- Criminology and Policing
- Law
- Psychology
- Sociology and Black Studies.

**Our facilities include:**

- Library with access to 62 million print and online resources
- Dedicated IT and student services support
- Simulated courtrooms
- Psychology laboratories
- Internal marketing agency
- City Trading Room.





BUSINESS COURSES

Undergraduate

BSc (Hons) Accountancy
BSc (Hons) Accounting and Finance
BSc (Hons) Accounting and Islamic Finance
BSc(Hons) Accounting with Business
BA (Hons) Business
BA (Hons) Business with Marketing
BSc (Hons) Digital Business
BA (Hons) Business Administration (Top Up)
BA (Hons) Business Economics
BSc (Hons) Business Finance
BA (Hons) Business Management
BA (Hons) Business Management with Enterprise
BA (Hons) Business Management with Supply Chain Management
BA (Hons) Economics
BA (Hons) E-sports Management
BA (Hons) Event, Venue and Experience Management
BSc (Hons) Finance and Investment
BA (Hons) Financial Economics
BA (Hons) Global Hospitality Management
BA (Hons) Global Sport Management
BA (Hons) Human Resource Management
BA (Hons) International Business (Top Up)
BA (Hons) International Finance (Top Up)
BA (Hons) International Marketing (Top Up)
BA (Hons) Marketing
BA (Hons) Marketing with Advertising and PR

BA (Hons) Marketing with Commercial Management
BA (Hons) Marketing with Consumer Psychology
BA (Hons) Marketing Digital Communication

Postgraduate

ACCA
MSc Accounting and Finance
MSc Accounting and Finance (Master’s Stage)
MSc Banking and Finance
MSc Finance
MSc Finance and Investment
MSc Global Business Operations
MA Internal Audit Management and Consultancy
MA International Finance
MA International Human Resource Management
International MBA
MSc International Professional Accounting (ACCA)
MSc International Sport Management
MSc Islamic Finance
MSc Management and Entrepreneurship
MSc Management and Finance
MSc Management and International Business
MSc Management and Marketing

LAW COURSES

Undergraduate

LLB (Hons) Law
LLB (Hons) Law with American Legal Studies
LLB (Hons) Law with Business Law
LLB (Hons) Law with Criminal Justice

Postgraduate

LLM International Business Law
LLM International Human Rights
LLM International Law
LLM Legal Practice
LPC Legal Practice Course
LLM Professional Law

SOCIAL SCIENCES COURSES

Undergraduate

BA (Hons) Black Studies
BA (Hons) Black Studies (Criminal Justice)
BA (Hons) Criminology
BA (Hons) Criminology and Security Studies
BA (Hons) Criminology, Policing and Investigation
BSc (Hons) Psychology and Counselling
BSc (Hons) Psychology with Criminology
BSc (Hons) Professional Policing
BSc (Hons) Psychology
BSc (Hons) Psychology with Sociology
BA (Hons) Sociology
BA (Hons) Sociology and Criminology
BA (Hons) Youth, Work and Community

Postgraduate

MSc Applied Child Psychology
MA Black Studies
MSc Counselling (Children and Young People)
MA Criminology
MSc Forensic Psychology
MSc Health Psychology
MSc Policing and Intelligence Analysis
MA Security Studies

\*subject to approval





# COMPUTING, ENGINEERING AND THE BUILT ENVIRONMENT

THE FACULTY OF COMPUTING, ENGINEERING AND THE BUILT ENVIRONMENT  
COMPRISES TWO SCHOOLS WITH A SHARED VISION TO CREATE A POWERFUL  
CENTRE OF TECHNOLOGICAL EXCELLENCE AND INNOVATION, AND TO EQUIP  
YOU WITH THE SKILLS YOU NEED TO SUCCEED IN THE WORKPLACE  
AND CONTRIBUTE TO SOCIETY.

We have excellent resources including state-of-the-art laboratories and engineering workshops, world-class film and television studios, and the latest computing and digital technologies, all located in a spectacular environment provided by the Millennium Point building.

Our courses are designed to develop highly employable graduates and we have worked closely with our strong employer network to ensure our courses meet their demands and expectations. We work with some of the world's foremost employers, including the BBC, Microsoft, Cisco, Jaguar Land Rover and Wilmott Dixon.

**Accreditations include:**

- The Chartered Institute of Building (CIOB)
- Royal Institution of Chartered Surveyors (RICS)
- The Institution of Engineering and Technology (IET)
- The Institute of Mechanical Engineering (IMechE).

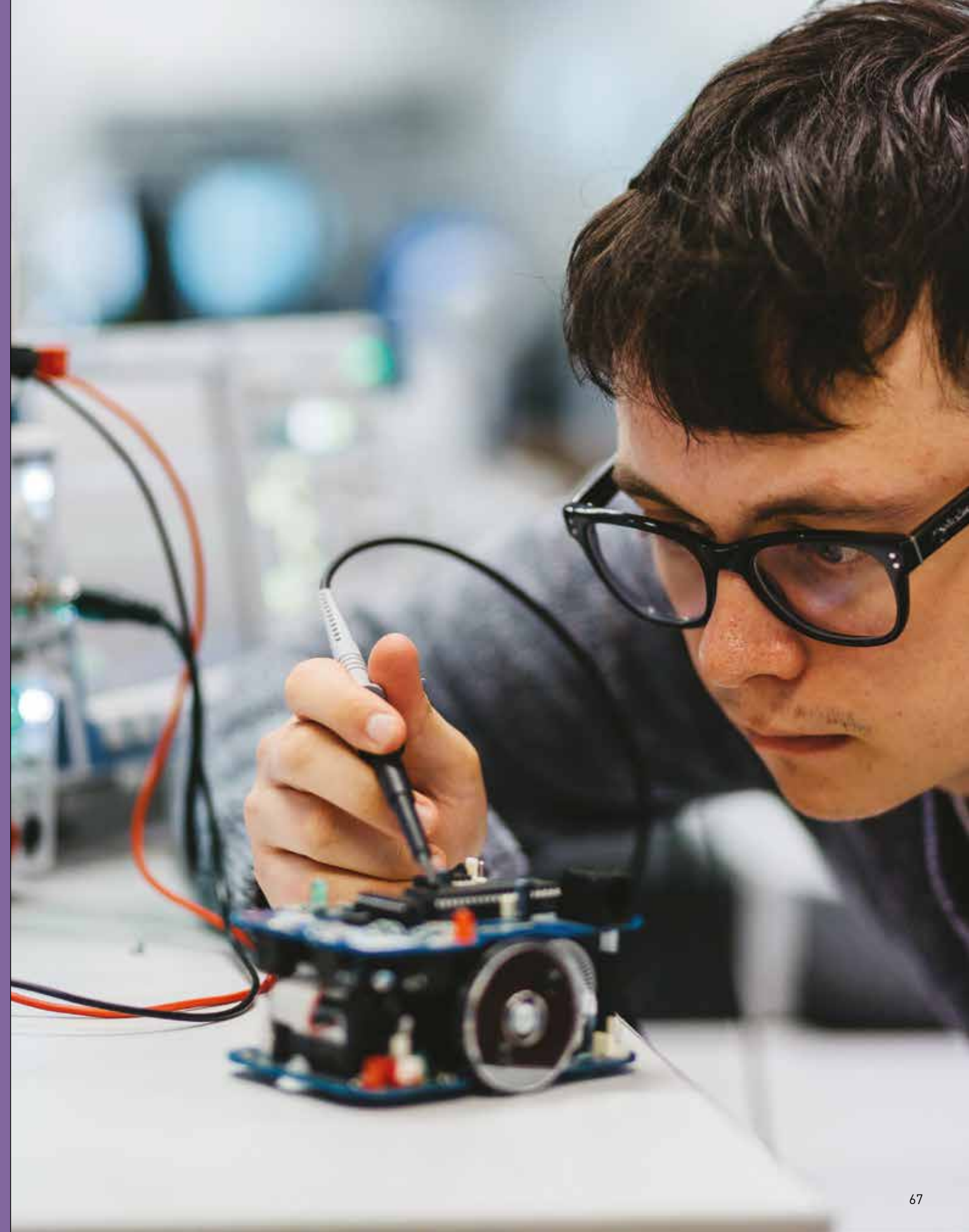
In the 2021 Guardian League Table, we were in the top 30 for Computer Science and Information Systems, top 25 for Electrical and Electronic Engineering and were in the top 20 for career prospects for Mechanical Engineering with 92% of graduates in graduate-level jobs or further study after 15 months.

**Our subject areas include:**

- Built Environment
- Computing
- Digital Technology
- Engineering.

**Our facilities include:**

- Cisco networking labs
- Industry-standard computer forensics lab
- Specialist games lab
- Hydraulics lab
- Computer Aided Design lab
- Flexible project space with makers' area.





COMPUTING, ENGINEERING AND THE BUILT ENVIRONMENT COURSES

Undergraduate

BSc (Hons) Architectural Technology	BEng (Hons)/MEng Manufacturing Engineering	MSc Digital Transformation
BEng (Hons)/MEng Automotive Engineering	BEng (Hons)/MEng Mechanical Engineering	MSc Logistics and Supply Chain Management
BSc (Hons) Building Surveying	BSc (Hons) Music Technology	MSc Mechanical Engineering
BSc (Hons) Business Information Technology	BSc (Hons) Property Development and Planning	MA Planning Built Environments
BEng (Hons) Civil Engineering and Construction Management	BSc (Hons) Quantity Surveying	MSc Project Management
BSc (Hons)/MSci Computer and Data Science	BSc (Hons) Real Estate	MSc Quantity Surveying
BSc (Hons)/MSci Computer Games Technology	BSc (Hons) Sound Engineering and Production	MSc Real Estate Management
BSc (Hons)/MSci Computer Networks and Security		MSc Smart Manufacturing
BSc (Hons)/MSci Computer Science		MSc User Experience Design
BSc (Hons) Computing (One Year Top Up)		
BSc (Hons)/MSci Computing and Information Technology	MSc Advanced Computer Networks	
BSc (Hons) Construction Management	MSc Advanced Computer Science	
BSc (Hons)/MSci Cyber Security	MSc Artificial Intelligence	
BSc (Hons) Digital Forensics	MSc Automotive Engineering	
BSc (Hons) Digital Media Computing	MSc Big Data Analytics	
BSc (Hons) Digital Media Technology	MSc Building Surveying with Facilities Management	
BEng (Hons)/MEng Electronic Engineering	MSc Civil Engineering	
	MSc Construction Project Management	
	MSc Cyber Security	

\*subject to approval





# HEALTH, EDUCATION AND LIFE SCIENCES

**THE FACULTY OF HEALTH, EDUCATION AND LIFE SCIENCES HAS A NATIONAL AND GROWING INTERNATIONAL REPUTATION FOR PIONEERING APPROACHES TO LEARNING AND TEACHING, THROUGH THE CREATION OF CUTTING-EDGE SIMULATED EXPERIENCES, AND HAS CONSISTENTLY ACHIEVED 'EXCELLENT' RATINGS IN NATIONAL QUALITY AUDITS.**

We are committed to teaching quality and have been awarded the Skills for Health Quality Mark, in recognition of the high standard of learning and training delivered on our health courses.

The School of Health Sciences was established in 2014 to accommodate our growing Biomedical Science and Sports courses portfolio. The School has a strong focus on practical experience and application of theory to ensure that you are ready for employment on graduation.

The School of Nursing and Midwifery provides a dynamic and forward-thinking learning environment, supported by more than 100 academic staff who are qualified nurses and experts in their fields. Four lecturers in the School have achieved the title

of 'Queen's Nurse' from the Queen's Nursing Institute in recognition of their dedication to a high standard of patient care.

The School of Education and Social Work has a long and established history when it comes to delivering initial teacher training (ITT), education, childhood and social work courses in Birmingham. Our undergraduate Education courses are ranked in the UK top 20 in the Guardian League Table 2021.

We have a good history of engagement with overseas ministries, academic institutions and professional bodies to transform local healthcare and education practices. Activities include collaborative research and delivery, student progression and mobility of staff and students.

**Our facilities include:**

- Mock operating theatre and hospital wards
- Specialist drama, art and music rooms
- Physiology and biomechanics laboratory
- A radiography imaging suite
- Sports therapy clinic room
- Specialist speech and language therapy clinic room
- Digitally enabled bioscience laboratory.





HEALTH, EDUCATION AND LIFE SCIENCES COURSES

Undergraduate

<u>BEng (Hons)/MEng Biomedical Engineering</u>
<u>BSc (Hons) Biomedical Sciences</u>
<u>BA (Hons) Early Childhood Studies</u>
<u>BA (Hons) Education Studies</u>
<u>BSc (Hons) Food and Nutrition</u>
<u>BSc (Hons) Nursing – Adult</u>
<u>BSc (Hons) Nursing - Child</u>
<u>BSc (Hons) Nursing – Learning Disability</u>
<u>BSc (Hons) Nursing – Mental Health</u>
<u>BA (Hons) Primary Education with QTS</u>
<u>BSc (Hons) Professional Practice (Healthcare for International Students)</u>
<u>BSc (Hons) Secondary Science (Biology) with QTS</u>
<u>BSc (Hons) Secondary Computing with QTS</u>
<u>BA (Hons) Secondary Physical Education with QTS</u>
<u>BSc (Hons) Social Work</u>
<u>BSc (Hons) Sport and Exercise Nutrition</u>
<u>BSc (Hons) Sport and Exercise Science</u>
<u>BSc (Hons) Sports Coaching and Physical Education</u>
<u>BSc (Hons) Sports Therapy</u>
<u>BA (Hons) Working with Children, Young People and Families</u>

Postgraduate

<u>MA Arts and Education Practices</u>
<u>MSc Dietetics (Pre-registration)</u>
<u>MA Education</u>
<u>MA Education (International Education)</u>
<u>MSc Medical Engineering Applications for Healthcare</u>
<u>MSc Medical Imaging Technology</u>
<u>MSc Physiotherapy (Pre-registration)</u>
<u>PGCE Post-Compulsory Education and Training</u>
<u>PGCE Primary and Early Years (Physical Education) with QTS</u>
<u>PGCE Primary Education with Specialism in Mathematics with QTS</u>
<u>MPH Public Health</u>
<u>PGCE Secondary Art and Design</u>
<u>PGCE Secondary Computer Science</u>
<u>PGCE Secondary Design and Technology: Food, Textiles and Product Design</u>
<u>PGCE Secondary Drama</u>
<u>PGCE Secondary English</u>
<u>PGCE Secondary Geography</u>
<u>PGCE Secondary History</u>
<u>PGCE Secondary Mathematics</u>
<u>PGCE Secondary Music</u>
<u>PGCE Secondary Physical Education</u>

<u>PGCE Secondary Religious Education</u>
<u>PGCE Secondary Science: Biology</u>
<u>PGCE Secondary Science: Chemistry</u>
<u>PGCE Secondary Science: Physics</u>
<u>MSc Social Work</u>
<u>MSc/PgDip/PgCert Transforming and Leading in Health Care</u>





# THE APPLICATION PROCESS

CHECK OUT OUR VISA GUIDANCE VIDEO



## 1 SELECT YOUR COURSE

## 2 CHECK ELIGIBILITY

If you don't meet entry requirements you may be able to study a foundation year with us or at Birmingham City University International College (BCUIC).

## 3 APPLY

Online, on paper, via a representative or through UCAS.

## 4 RECEIVE YOUR OFFER LETTER

Your offer letter will provide details about: course offered, tuition fee, scholarship awarded, course start dates and other relevant information.

## 5 ACCEPT AND PAY YOUR DEPOSIT\*

Accept and pay your deposit to confirm your place at Birmingham City University.

## 6 RECEIVE YOUR CAS LETTER\*

We will email you a Confirmation of Acceptance of Studies (CAS) number in a CAS statement.

## 7 APPLY FOR YOUR VISA\*

Once you have received your CAS letter, you can then apply for your visa. You can find guidance on applying for your visa: [www.bcu.ac.uk/visa](http://www.bcu.ac.uk/visa)



For more information on the application process visit:

[www.bcu.ac.uk/international/application-process](http://www.bcu.ac.uk/international/application-process)



# HOW TO APPLY



THERE ARE FOUR EASY WAYS THAT YOU CAN SEND AN APPLICATION TO US:



## ONLINE

Apply early and avoid the August rush. Select your course of choice on the website and click 'apply now'.



## PAPER APPLICATION

Request an application form from [international.enquiries@bcu.ac.uk](mailto:international.enquiries@bcu.ac.uk) and return by email with your scanned documents.



## IN-COUNTRY REPRESENTATIVES

Use the guidance and assistance of Birmingham City University reps in your country. You can find them listed at: [www.bcu.ac.uk/your-country](http://www.bcu.ac.uk/your-country)



## UCAS

Undergraduate students can apply through UCAS. The University's UCAS code is **B25 BCITY**.

For support on how to apply, you can contact us on +44 121 331 5389 or email [international.enquiries@bcu.ac.uk](mailto:international.enquiries@bcu.ac.uk).



TAKE A LOOK AT OUR  
ENGLISH LANGUAGE  
REQUIREMENTS VIDEO



 **6.0**

Most courses require a minimum 6.0 IELTS score to study here. To achieve 6.0, you can take our pre-sessional English courses.

# ENTRY REQUIREMENTS

Once you have found the course you would like to apply for, it's important that you have achieved, or are aiming to achieve, the entry requirements for that course. Our website is the best source for this information but as a general rule, please see the table on the right:

For your country entry requirements, please visit: [www.bcu.ac.uk/international/countries](http://www.bcu.ac.uk/international/countries)

Level	Requirement
Foundation	You should be educated to a standard comparable to British A Level standard but may have achieved lower marks
BCUIC Foundation	An average of five GCSE passes (grades A* to E/2 to 9), with at least three grade C/4 results
BCUIC Pre-Master's	Minimum of a UK Higher National Diploma (HND) or UK Diploma in Higher Education (DipHE), and a minimum overall grade point average (GPA) of 2.3 on the 4.0 scale
Undergraduate	You should be educated to a standard comparable to British A Level standard
Postgraduate	You should normally hold a qualification which is comparable to a British Bachelor's (Honours) degree
PhD	You should have a Master's degree in an appropriate discipline
MPhil	You should normally hold a First or Second Class Honours undergraduate degree or equivalent

# ENGLISH REQUIREMENTS

To be successful while studying at Birmingham City University, you'll need to have a good level of English. The majority of our courses require a minimum IELTS score of 6.0 overall (with no band less than 5.5) or equivalent.

We accept a range of qualifications as evidence of your English language abilities. Please visit our website to find out if we accept your local qualifications.

## PRE-SESSIONAL ENGLISH COURSES

Pre-sessional English courses are for students whose first language is not English, and who have a conditional offer to study for a degree course. The courses are designed to equip international students with the academic skills they need to succeed during courses and to raise their English language level to meet the entry requirements needed.

If your English language level is just below the course requirements, you can study a pre-sessional English programme prior to the main course.

### We offer three programmes:

- 16-week Presessional (to raise your English by the equivalent of 1.5 IELTS band)
- 10-week Presessional (to raise your English by the equivalent of 1.0 IELTS band)
- 6-week Presessional (to raise your English by the equivalent of 0.5 IELTS band)
- Two week pre-sessional courses for students who have already met language entry requirements of their course, but wish to improve their skills.

For more information visit: [www.bcu.ac.uk/international/english](http://www.bcu.ac.uk/international/english)

## NEED TO IMPROVE YOUR ENGLISH?

You need an extra score of	Available course
0.5	6-week pre-sessional English
1.0	10-week pre-sessional English
1.5	16-week pre-sessional English





# FOUNDATION PROGRAMMES

## YOUR DIRECT PATH TO UNIVERSITY

### BIRMINGHAM CITY UNIVERSITY INTERNATIONAL COLLEGE (BCUIC) FOUNDATION PROGRAMMES

If you have been educated to a standard comparable to the British A Level standard, but your qualifications are slightly below those required for direct entry onto a Bachelor's degree, a foundation programme may offer an alternative route to achieve your goals.

Foundation programmes are for school-leavers who have studied a non-British curriculum but wish to pursue a degree at a UK university. The foundation course acts as a bridge between your current qualifications and our entry requirements and is designed to plug academic gaps, improve your English and familiarise you with UK life and culture in preparation for university.

### BIRMINGHAM CITY UNIVERSITY FOUNDATION PROGRAMMES

#### WE OFFER A RANGE OF FOUNDATION PROGRAMMES HERE AT BIRMINGHAM CITY UNIVERSITY.

If you cannot meet the University's foundation entry requirements or wish to benefit from additional support and more one-to-one interaction with tutors, Birmingham City University International College (BCUIC) also offers a range of specifically tailored foundation programmes aiming to prepare students for university-level study.

Teaching at BCUIC is delivered in a dedicated area of the University's campus, helping students to enjoy a supported transition into mainstream university life. BCUIC also offers additional entry points with its first year and Pre-Master's programmes, plus the added benefit of flexibility with three intake options per year (September, January or May).

More information can be found at [www.bcu.ac.uk/bcuic](http://www.bcu.ac.uk/bcuic).

We offer foundation programmes in the following subject areas:

- Accounting, Economics and Finance
- Architecture
- Art and Design
- Built Environment
- Business
- Computing, Networking and Games Technology
- Education
- Engineering
- Events and Sports Management
- Fashion
- Film and Technology
- Health and Life Sciences
- Jewellery
- Law
- Marketing
- Media
- Psychology
- Sports Science

For the latest information please visit: [www.bcu.ac.uk/international/foundation](http://www.bcu.ac.uk/international/foundation)



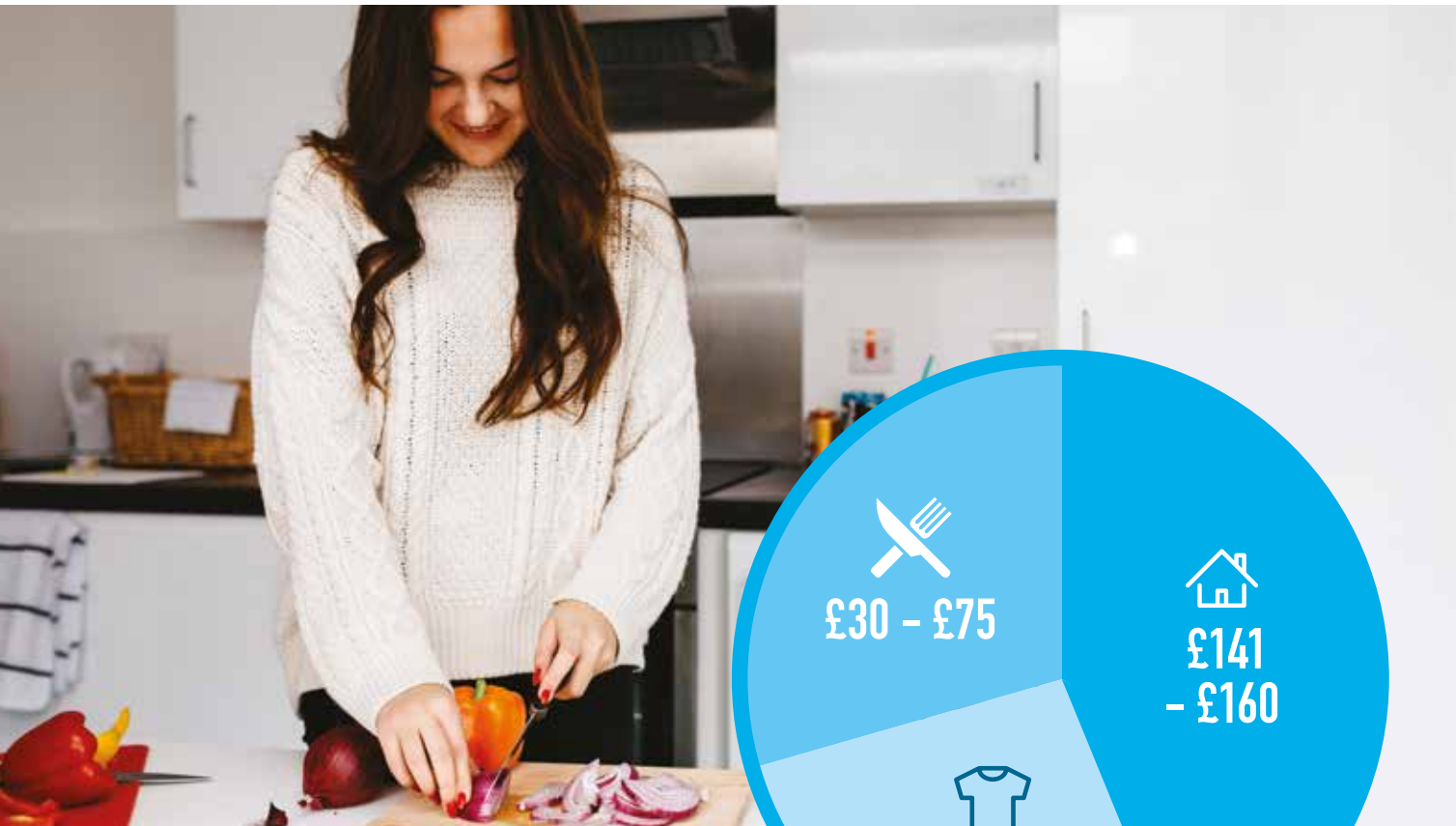


# TUITION FEES



**YOUR ANNUAL TUITION FEES COVER EVERYDAY TUITION, EXAMINATION COSTS AND MEMBERSHIP OF THE STUDENTS' UNION. HALF OF YOUR FEES ARE PAID AT ENROLMENT, AND THE REST CAN BE PAID IN INSTALMENTS, PROVIDED YOU HAVE A UK BANK ACCOUNT.**

The University's fees varies by course and level. We would encourage you to check your particular tuition fees on the course page at [www.bcu.ac.uk/courses](http://www.bcu.ac.uk/courses).  
  
For Birmingham City University International College (BCUIC) courses, please visit [www.bcuic.navitas.com/fees](http://www.bcuic.navitas.com/fees).



# LIVING COSTS

**IF YOU ARE AN INTERNATIONAL STUDENT, YOU'LL NEED TO HAVE SUFFICIENT FUNDS TO STUDY IN THE UK. YOU WILL NEED TO ALLOW AT LEAST £1,015 PER MONTH, OR £9,207 FOR THE FIRST NINE MONTHS OF YOUR STUDIES.\*\***

\*\*As per UKVI guidance, please note that this figure might change.

You can expect to pay the following each week:

	Description	Cost
Accommodation	Private furnished room, shared kitchen, gas, water, electricity, wi-fi	From £141 to £160
Food and drink	Weekly shopping, dining out, social nights	£30 - £75
Additional costs	Stationery, printing, clothing, cinema etc.	£5 - £50
Weekly total		£176 - £285***

\*\*\*These costs will vary depending on your personal circumstances.

Find out more information at [www.bcu.ac.uk/international-fees](http://www.bcu.ac.uk/international-fees).





We work with employment agencies within Birmingham to list the opportunities available in the city. This allows you to work while you study with us, fitting the job around your course commitments.

## SCHOLARSHIPS

**BIRMINGHAM CITY UNIVERSITY UNDERSTANDS THAT YOUR ACADEMIC STUDIES CAN BE COSTLY. BOTH THE UNIVERSITY AND OTHER EXTERNAL PROVIDERS OFFER A RANGE OF SCHOLARSHIPS TO HELP YOU FIND ADDITIONAL FUNDING FOR YOUR STUDIES.**

### BCU Academic Excellence Scholarship

Depending on your prior education background, you may be entitled to a scholarship ranging from £1,000 up to £2,000.

### External scholarship providers

There are a number of providers who offer financial support for your journey to studying in the UK.

[www.bcu.ac.uk/international/scholarships](http://www.bcu.ac.uk/international/scholarships)

## EARN WHILE YOU LEARN

**OUR STUDENT EMPLOYMENT SCHEME ENSURES THAT OUR STUDENTS ARE GIVEN THE CHANCE TO FILL MANY PART-TIME TEMPORARY POSITIONS WITHIN THE UNIVERSITY.**

By taking part in the scheme, you will gain valuable experiences and employability skills, enhancing your prospects in the job market. It will also allow you to become more involved in University life by delivering, leading and supporting many aspects of the learning experience, from administration to research and to mentor roles.

If you are on the student visa route, you are permitted to work up to 20 hours a week during term time; if you study for a Bachelor's, Masters' or at PhD level.

For more information please visit:  
[www.bcu.ac.uk/work](http://www.bcu.ac.uk/work)

### Example roles include:

- Administration assistants
- Laboratory assistants
- Marketing assistants
- Student ambassadors
- Student academic mentors
- Copywriting
- Magazine editor
- Technical assistant
- Web developer
- Video and post-production assistant
- Database assistant
- Disability assistant
- Receptionist
- Assistant PA.

[www.bcu.ac.uk/student-employment](http://www.bcu.ac.uk/student-employment)



# YOUR ARRIVAL



**MOVING TO A DIFFERENT COUNTRY IS A HUGE DECISION, AND BIRMINGHAM CITY UNIVERSITY WANTS TO MAKE IT AS EASY AND SMOOTH AS POSSIBLE. THE UNIVERSITY'S INTERNATIONAL TEAM WILL HELP YOU EACH STEP OF THE WAY, AS WE HAVE AN EXTENSIVE SUPPORT SYSTEM IN PLACE TO HELP YOU WITH ANY ISSUES THAT MAY ARISE.**

## MEET AND GREET

We'll meet you at Birmingham Airport (BHX) and make sure you're dropped off at your student accommodation. Visit [www.bcu.ac.uk/meet-and-greet](http://www.bcu.ac.uk/meet-and-greet) for more information.

## VISAS AND IMMIGRATION

The International Student Visa Advisers provide advice on UK immigration law, including the impact of academic decisions on your visa, replacing lost visas and extending student visas. Please email [batch@bcu.ac.uk](mailto:batch@bcu.ac.uk) for more information.

## WELCOMING YOU

During September and January, we hold a week of welcome activities, especially for new international students. You will enrol on your course, get information about the University, meet staff, open a bank account, register with the police and a doctor. It's also an opportunity to attend social events, familiarise yourself with Birmingham, and make the city your home away from home.

## JOBS AND CAREERS

If you want to set up an innovative business in the UK, it must be different from anything else on the market; our Research, Innovation and Enterprise department will assist you in applying for a Start-up visa. [www.gov.uk/start-up-visa](http://www.gov.uk/start-up-visa)

## STUDENTS' UNION, SPORTS AND SOCIETIES

When you become a Birmingham City University student, you automatically become a member of our Students' Union and can access a wide range of fantastic services and facilities. The International Student Association will help you get acquainted with student and city life. From something as simple as having a meal at one of the city's many restaurants, to a day trip to a different location, we're here to create a welcoming social environment for our students.

**WATCH JASPREET'S VIDEO, AS HE SHARES HIS TIPS FOR SETTLING INTO UK LIFE.**



[www.bcu.ac.uk/uk-life-vid](http://www.bcu.ac.uk/uk-life-vid)





## MEET US ABROAD


We have representatives in most countries; check out our website for more details:


[www.bcu.ac.uk/your-country](http://www.bcu.ac.uk/your-country)

T: +44 (0) 121 331 5389

E: [international.enquiries@bcu.ac.uk](mailto:international.enquiries@bcu.ac.uk)

[www.bcu.ac.uk/international](http://www.bcu.ac.uk/international)

 @MyBCU

 /birminghamcityuniversityinternational