

Annual Review

2011-
2012

Contents

Introduction	3
Learning and Teaching	4
Business and Industry	9
Investment	14
Research	17
International	21
Academics	25
Students	29
Facts and Figures	33
Key Officeholders	37
Heritage	38

Welcome

It is my pleasure to welcome you to Birmingham City University's Annual Review for 2011/12. At this time, it is customary for me to reflect on our achievements over the past year, but as this covers my last full year in office before my retirement as Vice-Chancellor, I can't help but reflect more broadly on all of our achievements over the last few years.



We have achieved great things together since I took up my post. Through the energy, creativity and commitment of our staff, students and graduates, we have seen major changes to everything from our learning and teaching to our research and industry engagement. Our profile is higher, and our reputation stronger.

We have made bold statements about what our University is, and what we want it to be in the future. We have redesigned our courses to embed today's essential employability skills, and this year we took that one step further by preparing to launch Opportunity: Student Jobs on Campus, an innovative scheme to employ our own students and give them real-world experience.

Transformation

When we were compiling this Annual Review, the theme which came up again and again was that of transformation. In a broad sense, a university education is always a transformative experience in the life of its students; however, when I look at this University now, it is evident that by working together our staff and students have dramatically transformed the way we do things here, in everything from our learning and teaching to our physical environment.

Major investments in our estates will see us transform our physical environment to a campus fit for the 21st century. Phase 1 of the extension to our City Centre Campus is on target to open in September 2013, and in May this year, I was delighted to announce details of Phase 2, which will house a significant

amount of student-facing activities, as well as Birmingham City Business School and the Faculty of Education, Law and Social Sciences. This exciting development, which is part of the University's commitment to improve the student experience and enhance the student community, will further transform our provision for staff and students.

I was also delighted to see that our latest National Student Survey (NSS) results reported a further increase in our overall satisfaction rating, to 83 per cent, and I know that our staff are working hard to continue to meet and exceed our students' expectations in future.

Bright future

We expected the introduction of higher fees to have an impact on recruitment and indeed UCAS applications nationally have fallen by seven per cent this year; however, the phenomenal rise in our popularity with prospective students over the last few years has kept us in a strong position, and our applications for 2012/13 were still higher than they were in 2010/11.

I have enjoyed my time as Vice-Chancellor of Birmingham City University immensely and I am confident that I am leaving behind an organisation with a bright future. I would like to thank you for your interest in the University and I hope that you will continue your association with us over the coming years.

Professor David Tidmarsh
Vice-Chancellor

A handwritten signature in blue ink that reads 'David Tidmarsh'. Below the signature is a horizontal line.

Transforming... our learning and teaching



Central in our approach to enhancing the learning experience of our students is our avowed aim to work in partnership with them and the Students' Union to develop a real sense of learning community. Starting with our major redesign of the learning experience four years ago we have built a national and international reputation in the field of student engagement. This is being taken forward with the University at the forefront of a national change programme, Students as Partners, with the Higher Education Academy.

Professor Stuart Brand
Director of Learning Experience

22

key employability skills which students can develop on our OpportUNity programme

Level Up

Mentors from our School of Media online learning and engagement programme to bridge the gap between college and university for new arrivals



Providing opportunities for work experience

We now seek to offer all students the chance to compete for employment on campus in a variety of roles including as academic partners, as peer mentors and on live collaborative projects which span discipline boundaries. All these initiatives provide opportunities for broader experience beyond the discipline in which students work and create a greater sense of belonging. During the 2011/12 academic year, the University was preparing for the launch of its dedicated employment agency, OpportUNity - Student Jobs on Campus, which will see us hire our own students for a range of temporary and casual jobs from September 2012. As well as giving our students valuable experience of the recruitment and selection process, it will also help them to gain experience and develop the skills that graduate employers are looking for. The University has worked with employers to identify 22 key areas of expertise which students can develop by taking part on the programme, and will receive regular feedback from their line managers on progress made.

Working with our students

Examples of thriving partnership work continue to emerge in all parts of the University, including our School of Computing, Telecommunications and Networks which has been working with its students to improve their learning experience. Student Darren Cawthorne worked with Dr Tony Wilcox, Academic Lead for Electronics and Communications on a Student Academic Partnership to develop low-cost robotic platforms for use in universities, colleges and schools. As a result of his work, the University is now working with a large electronic components retailer to produce outreach kits for schools, which it is hoped will encourage them to engage in Birmingham TechFest competitions, held at Birmingham City University, thereby introducing more young people to the benefits of studying engineering-related subjects. The School also employed two student mentors – Alex Kempster and Afzal Miah – to support electronics students in the revision period before exam re-sits, while Alex and Beni-John Makuta were employed as student interns during the summer to develop new learning materials for electronics students.

Smoothing the path to university

Student Academic Partnerships across the School of Media have included the development of a Social Media Tutorials website and the revamping of the Professional Media Practice programme to meet the demands of both the industry and the individual needs of each of our students. The School has also worked with its students to develop a summer online learning and engagement programme, Level Up, to help bridge the gap between college and university for new arrivals. Students can log on before they start their course to find out more about the School, get to know other people on their course and take part in activities to give them an introduction to academic study. Dr Kerry Gough, lecturer in Film, Television and Media Theory, said: “The ambition here is to ensure that barriers between staff and students are eliminated in a way that encourages creative partnerships from the outset and sets the first impression of our Faculty as one which wants to work alongside our students in partnership to achieve common goals.”



Promoting a career in business

A former finalist of BBC's The Apprentice gave advice on how to be a success in the boardroom to business students from across the Midlands at a free event hosted by Birmingham City University in March. Wolverhampton-born Ruth Badger shot to fame when she finished runner-up in the 2006 series of the gruelling TV competition, after which she launched her own business, Ruth Badger Consultancy Limited, which provides 'company MOTs' and business advice. She visited Birmingham City Business School to encourage young people from secondary schools and colleges across the West Midlands to consider a career in business by sharing her experiences of working in business, starring in BBC's The Apprentice, and successfully setting up her own companies.

Expert advice

Ruth Badger, former finalist of BBC's The Apprentice, gave advice on how to be a success in the boardroom to business students

Gaining real-life experience of the workplace

Birmingham School of Architecture has been working on a number of live projects, allowing students to get real-life experience of the industry they hope to enter. Students on our BA (Hons) Architecture, BA (Hons) Landscape Architecture and M.Arch Architecture courses all undertake Project Electives, where they are involved in taking a brief from a real-life end user, researching the project and, most importantly, working alongside industry experts within the professional context of the architect's office. This process is fundamental to our way of thinking and how we engage with industry. Projects have included the 'Box of Delights' exhibition at The Public arts centre in West Bromwich, the 'Edible Eastside' urban garden in Birmingham city centre and the 'Digital Landscapes' scheme to produce a series of animations about the community living around the River Rea in Digbeth, in conjunction with animation students from Birmingham Institute of Art and Design.

Giving students extra skills

Birmingham City Business School has launched a new Professional Development Programme to help students gain extra skills and experiences which help them stand out from the crowd. The programme incorporates regular seminars and workshops in three key areas: employability, skills development and leadership challenge. Sessions will include presentations from staff and key speakers, information about opportunities such as undertaking a placement year or becoming a Student Ambassador, improving IT skills and undertaking projects in the community. The additional knowledge, skills and experiences gained on this programme, which runs alongside normal academic degree courses, provides a unique chance to differentiate students from their peers in the graduate jobs market.



Satisfied students

Our NSS scores continue to improve

Satisfaction on the up

Our National Student Survey (NSS) results for 2012 saw a further increase in our overall satisfaction rating, to 83 per cent. Feedback on the performance of University staff was particularly good, with 87 per cent saying staff were good at explaining things and 86 per cent agreeing staff were enthusiastic about what they were teaching. Pleasingly, in response to a question asking whether students felt part of an academic community, the satisfaction rating has risen by 11 per cent over the last four years. The NSS is an annual survey that targets final year undergraduates throughout the UK, gathering feedback on their experiences of higher education.

Partnership leads to audit qualification

The Centre for Internal Audit, Governance and Risk Management, part of our Business School, has announced an important new collaboration with the Chartered Institute of Internal Auditors (IIA). The University was the first body to be approved to deliver its programme as a 'Dual Award' meaning that students registered on the MSc Audit Management and Consultancy programme can attain their professional designations and Chartered Internal Auditor Status (subject to membership and experience requirements) without sitting additional IIA examinations, providing a significant advantage to students in terms of both cost and time.

Careers advice

The past 12 months has seen the launch of a range of new services

Practical careers advice on offer

As part of our ongoing efforts to enhance students' future employability, our Careers and Job Prospects team put together a series of information videos for graduates wanting to get a foot on the careers ladder. Topics covered include writing a CV, job searching, application forms, interviews and psychometric testing, as well as how to make the most of your first few weeks in a new job. We also launched a new interactive training scheme for recent graduates, Career KickStart, with careers experts and employers offering guidance on finding work. Topics include searching and applying for jobs, marketing yourself to employers, networking and social media, interview techniques, assessment centres, and business and commercial awareness. The first event took place in June 2012, with students gaining places through a realistic application process to take part.



Exam trial is world first

Students from the School of Computing, Telecommunications and Networks were the first in the world to trial a new and innovative computing exam designed to fill a gap in the IT skills market. Created in partnership with organisations from several countries, Birmingham City University was selected to be part of the pre-release testing phase of the Linux Essentials exam programme, which prepares the next generation to acquire and develop skills required to succeed in the IT sector. The programme is an entry-level, international exam, designed as a stepping stone to gaining advanced computer skills, and has been developed by the Linux Professional Institute.

E-learning expertise is recognised

The School of Law was shortlisted in three categories for the E-Learning Awards 2011, recognised nationally as the acclaimed industry standard to celebrate e-learning success across a number of sectors. The School's application was based on their Virtual Solicitors' Office, which was set up in collaboration with the University's Centre for the Enhancement of Learning and Teaching as part of our virtual learning environment 'Shareville'. The virtual office provides students in the School of Law with online problem-based scenarios, which relate directly to the sorts of cases that solicitors will come across in practice. The scenarios are presented to students in a realistic way, with real people playing out scenarios that would commonly occur in the legal world. It was shortlisted in the categories of 'Best learning game, simulation or virtual environment', 'Excellence in the production of learning content - Not for Profit Sector' and 'Excellence in the production of learning content - Public Sector'.

Innovative setting for clinical skills practice

Students from the Faculty of Health are being given access to an innovative clinical space to practise their skills in a safe and supportive environment outside of lecture time. Skills Practice and Clinical Enhancement (SPACE) has over 60 clinical skills procedures that students can access and use to practise in preparation for their placements, where they will be working with real-life patients. During 2011/12, the University piloted a SPACE ambassador scheme, where students are employed to facilitate the learning environment and support junior students in their learning. Senior lecturer and Faculty SPACE lead Lindsay Yardley said: "My intention for SPACE has always been as an environment for students led by students for all Faculty of Health students."

SPACE

Students making use of the facility to enhance their clinical skills



Transforming...

our relationships with business, industry and external partners



Drawing on design and innovative thinking lies at the heart of our work with business, industry and partners. By sharing our market-focused ideas and applied expertise, and promoting knowledge transfer, we are contributing to success at home and abroad. Our students are able to learn and grow as a result of meaningful involvement in live work-related projects, through work experience and internships as well as by participating in coursework designed to meet employers' needs - equipping them for their future life at work and beyond.

Building on this approach we are providing consultancy, partnership services, knowledge transfer and contributing vital graduate talent. We know that business-university collaboration plays an increasingly important role in competitive success. We recognise our responsibilities and are keen to play our part in building our region's 'innovation eco-system', facilitating this through the work of our own 'think and do' tank, Idea Birmingham. Through our many initiatives with business, we are sharing expertise and providing students and graduates with entrepreneurial projects and placements with some of the biggest names in their sectors, our best-loved brands and the leading authorities in their fields.

Beverley Nielsen
Director of Employer Engagement

Student entrepreneurs put work on sale

In May 2012 the University launched its first Birmingham Made Me Entrepreneur Store with 10 traders participating in an innovative retail collective, hosted by The Mailbox, Birmingham. Now with 24 entrepreneurs working to support each other across two stores, they have sold over £21,000 of their newly-designed products and services during their first four months in business.

Design excellence

In June 2012, the University organised and launched a platform to promote Midlands manufacturing and design excellence at the Birmingham Made Me Design EXPO, also located at The Mailbox. This showcased new designs from more than 150 businesses with additional work by students from the University. These were shown across 12 design zones, curated by over 20 recognised experts, providing new opportunities for students to work with leading international brands. Almost two weeks in duration and including over 30 fringe events, it included the Design and Innovation Awards, attracting 330 entries from businesses and universities and incorporating the BA Fashion Design Graduate Fashion Show and a 'talent showcase' performed by students from the Birmingham Ormiston Academy, the specialist creative, digital and performance academy sponsored by the University.

Leisure degree developed in partnership with industry

A new specialist postgraduate management development programme, Leaders in Leisure, was developed in conjunction with the University's Birmingham City Business School (BCBS), and launched by The Rank Group plc. The qualification will be delivered primarily by the experienced BCBS team, with specialist input from Rank Group experts. On completing the programme, participants will be awarded a Postgraduate Diploma in 'Leisure Leadership and Strategy'.

Promoting social entrepreneurship

Birmingham City Business School was selected to join a £2 million nationwide scheme to boost social entrepreneurship. The project, funded by the Higher Education Funding Council for England and delivered in partnership with UnLtd, the Foundation for Social Entrepreneurs, will be recruiting 'champions' to engage with a wide range of staff and students from all disciplines. Experts at Birmingham City University will test pilot a range of methods and approaches to support social entrepreneurs.

University hosts business intelligence event

Rolls-Royce, the BBC and PricewaterhouseCoopers were among several blue chip names attending a business intelligence conference hosted by the University's Faculty of Technology, Engineering and the Environment, in partnership with global enterprise application software company SAP, looking at how businesses can use technology to work smarter. Business intelligence refers to computer-based techniques used in analysing business data to provide competitive advantage. Business intelligence experts were on hand to share their knowledge during the event held at the University's prestigious Millennium Point facilities.

Gold at New York Radio Festival Awards

A 12-part documentary series produced by staff and students at Birmingham School of Media and Xfm London won gold at the 2012 New York Radio Festival Awards, which had received entries from 27 countries. The University's Head of Radio, Sam Coley, worked alongside MA students Paul Mitchell, Rebekah Pennington and Jess Smiton on the 'Xfm 25' project, a 12-episode series with each episode celebrating the 25th anniversary of an influential album released during 1986, featuring works by Prince, REM and The Smiths.

£21k

**sold during the first four months
of the Entrepreneur Store**

New York Radio Festival
Rebekah Pennington with the gold award





Birmingham Made Me Entrepreneur Store
University staff and students at the launch of the event

£2m

nationwide scheme to boost
social entrepreneurship

Showcasing manufacturing techniques

Business leaders representing traditional manufacturing – including furniture, jewellery, textiles, ceramics and leather goods – celebrated their success at a showcase event hosted by the School of Jewellery. The Interiors and Lifestyle Futures (ILF) event included a selection of work reflecting collaborative approaches, with businesses working alongside experts at the University to make their traditional products even more competitive in the modern marketplace by applying new thinking and cutting-edge design. ILF Communication Manager Adrian Burns said: “Collaboration has been the linchpin behind our activities. Many of the companies taking part have initiated collaborative activities which will endure beyond the lifetime of the project – creating new opportunities and business, hopefully for many years in the future.”

Experts share creative thoughts

The University hosted a free event in March 2012 focusing on digital and multi-channel media working with the Creative Industries Knowledge Transfer Network (CIKTN), a government-funded innovation agency, providing space for innovators to meet, share ideas and shape the future. Staff from Birmingham School of Media and Birmingham Institute of Art and Design provided insights into technology trends and developments. CIKTN is working to accelerate innovation among creative businesses, promoting funding and collaboration opportunities to encourage business success.

New course for aspiring games developers

Our popular Gamer Camp for aspiring computer game developers is launching a new course designed to prepare individuals to be the next generation of video games entrepreneurs. Gamer Camp: Biz has been designed to combine managerial and business know-how with a comprehensive and realistic understanding of the game development process and how all the disparate elements operate and come together in the finished product. The approach mirrors that taken by companies such as Facebook, where all managers are expected to understand coding and programming.

Exchanging knowledge with Rolls-Royce

Professor Craig Chapman at the Faculty of Technology, Engineering and the Environment has collaborated with Rolls-Royce in the innovative field of Knowledge Based Engineering (KBE). Unlike traditional Computer Aided Design (CAD) systems, KBE takes a more intuitive approach by digitally storing knowledge from engineers built up over many years which can then be incorporated into the design of new products according to the client’s requirements. What began as a Knowledge-Based Partnership between the University and Rolls-Royce has become our first commercial research relationship, using the University’s cutting-edge Knowledge Based Engineering lab.



Take to the Streets

University students and staff at the book launch

Take to the Streets

Staff, students and graduates from Birmingham Institute of Art and Design were commissioned to create a series of new pictures, capturing the everyday life of the Colmore Business District, in Birmingham's City Centre. MA Visual Communication students Chaporn Pongsuwan, Patr Srisook and Ross Vincent were among the team working on the 'Take to the Streets' project. Inspired by the work of the Magnum photographers – the international photographic co-operative founded in 1947 – their pictures document the changing face of the area, looking at how organisations are working together to reinvigorate Birmingham's streetscapes. The project culminated in the production of a book and a small touring exhibition of photographs, showing the area as a collage of constantly-shifting insight and surprising juxtaposition. The photographs will be included in Birmingham Central Library's Photography Collections.

Hosting international construction conference

The Faculty of Technology, Engineering and the Environment, played host to the 48th Annual International Conference of the Associated Schools of Construction in April, aimed at meeting future challenges by stimulating international co-operation and information exchange in areas such as curricula, teaching, research and service. The first time the conference had been hosted outside the USA, it attracted over 200 speakers, delegates and guests from across the globe, boasting the largest-ever attendance recorded for the event. Keynote presenters included Royal Institution of Chartered Surveyors President Lian Ong, and Balfour Beatty plc Chief Operating Officer Andrea McNaughton.

New Music 20x12

New Music 20x12 was a UK-wide programme which consisted of 20 outstanding new works, each lasting 12 minutes, which were commissioned to feature centre stage at the London 2012 Cultural Olympiad. These included four new works by composers from Birmingham Conservatoire, which were commissioned among the 20 chosen as part of the Cultural Olympiad's New Music 20x12 programme. Each commission was broadcast on BBC Radio 3 and toured the UK, enabling as many people as possible to enjoy excellent new music as part of the celebrations of the London 2012 Olympic and Paralympic Games.



New Music 20x12

Ping! is performed as part of the Cultural Olympiad

Assisting AGA's designs on the future

A Knowledge Transfer Partnership (KTP) has been agreed between cast-iron cooker manufacturer AGA and experts at Birmingham Institute of Art and Design (BIAD) to develop sustainable design solutions for future products. While the company prides itself on its prestigious heritage and traditional aspects to its design, it is also working to accommodate changing lifestyles and requirements for energy efficiency in the home. A KTP Associate was recruited and based at the firm's Telford headquarters for two years, supervised by Dr Panchalingam Suntharalingam from BIAD, focusing on exploring renewable energy technologies, new product development and efficient energy storage devices such as high kilovolt amp hour (KVAH) batteries and heat recovery systems.

New help for law students

Birmingham City University teamed up with Birmingham Law Society for a new venture that will see law students automatically enrolled as student members of the organisation – the largest local law society in the country. This unique opportunity reflects the importance that Birmingham City University attaches to its students being connected to the local legal profession. Professor Fiona Church, Executive Dean of the Faculty of Education, Law and Social Sciences, said: "It will give students the opportunity to gain far greater insights into the legal profession, building up local connections and ensuring students are aware of the challenges and issues surrounding this sector."



Birmingham Law Society
A new partnership to provide opportunities for our students

Helping students to learn while they work

The Centre for Leadership and Management Practice has launched a unique undergraduate programme to provide high-calibre students with a degree while they work. Our BA (Hons) Leadership and Management Practice (work-based) degree is a unique undergraduate programme aimed at strengthening the Centre's relationship with business and reflecting our practice-based ethos. The programme comprises four 'blocks' of academic study and can operate over a two year (fast track) or three year (conventional) cycle. The remaining time is spent in the workplace, gaining valuable experience, skills and knowledge for a future career in leadership and management.

Marketing expertise recognised

Birmingham City Business School (BCBS) has been recognised as a centre for excellence in business marketing by the global accreditation body for marketing and business professionals. Global Marketing Network has announced a strategic partnership with BCBS, strengthening the University's skills and reputation in the field of business marketing. In a joint statement issued by Global Marketing Network chief executive Darrell Kofkin and Executive Dean of Birmingham City Business School Professor Christopher Prince, they said: "This exciting partnership will enable both organisations, in collaboration with our wider networks, to recognise and reward exceptional achievements in marketing leadership around the world."

Business advice for county cricket club

Warwickshire County Cricket Club teamed up with Birmingham City Business School to explore ways of maximising income through a Knowledge Transfer Partnership with leading academics. The County Ground has been transformed following the completion of a £32 million redevelopment of the Pavilion End, boasting state-of-the-art leisure and media facilities along with a conferencing and banqueting suite. Colin Povey, CEO of Warwickshire County Cricket Club, said: "Working with Birmingham City Business School is opening up real opportunities for us. We're gaining new insights into innovative ways to market the ground and enhance our relationship with the local community. We're already seeing huge benefits from the project."

Transforming... our facilities through investment



The 2011/12 academic year marked the biggest strategic change in the University's history with construction commencing on the first phase of our development in the City Centre. The University is investing a total of £125 million as part of an ambitious estates strategy to transform our learning provision in the heart of the city. As part of this vision, the University will move towards a two-campus strategy where it can better support enhanced learning and student support facilities for the modern learner across a two mile radius.

Our campus plans are central to the University's strategic vision and commitment to improve the student experience, including a more integrated learning community with access to world-class facilities. The expanded campus is ideally located in the Eastside district of Birmingham, which is being promoted by Birmingham City Council as the city's learning and technology quarter, with a multi-billion pound investment in new buildings and facilities. As such, Eastside is the ideal location for the University's ambitions and we look forward to bringing technology, learning and culture to the area.

Graham Rhodes
Director of Estates



City Centre Campus plans

An artist's impression of the Phase 1 and Phase 2 buildings

City Centre Campus plans gather pace

The next stage in the transformation of our estate will be a flagship extension to our City Centre Campus, housing cutting-edge art and design facilities and a state-of-the-art Media Centre. The building is currently taking shape alongside our existing facilities at Millennium Point in Birmingham's Eastside – one of the largest regeneration zones in the UK – ready to welcome its first students in September 2013. A 'topping out' ceremony was held in July 2012 to mark the completion of the exterior of the building, meaning the main focus of work could then switch to equipping the interior.

The 18,310 sq m, five-floor building has been designed around the principle of 'exquisite collisions', providing improved opportunities and physical spaces for students on different courses to come together and share ideas. For art and design students, there will be a core of workshops in the centre of the building with studio space around them, and then 'collision space' where students and staff from different courses will meet socially and exchange thoughts and ideas, allowing our students to experience a more integrated approach. The site will also house the University's School of Media, where cutting-edge facilities in the new building will include five state-of-the-art TV studios, together with seven radio studios and post-production suites, while classroom teaching on the courses will move to Millennium Point itself. These resources will be integrated with those already at Millennium Point for students on media technology courses offered by the Faculty of Technology, Engineering and the Environment.

Student engagement was also a significant consideration in the planning for Phase 1, with the contractors Willmott Dixon responding to a 'wish list' of engagement and employability opportunities put forward by the University as part of their winning bid. This response was compiled into a 'Student Engagement Plan' which is regularly reviewed and updated by representatives of the project team, the University and Willmott Dixon. Activities have included student and staff site visits,

sponsorship of research students, bricklaying workshops on the Phase 1 site, presentations by the Design Team in lectures and a competition for work placement opportunities with Willmott Dixon.

The year also saw the University finalising its plans for a second phase of the development, consolidating more of the University's teaching onto a single flagship site right in the heart of Birmingham. As well as teaching space for Birmingham City Business School and our Faculty of Education, Law and Social Sciences, the second phase will incorporate new library, IT, social and support facilities, as well as specialist studios and workshops, which will provide an improved student experience and a greater sense of community for everyone studying on that campus. These plans were approved by the City Council's planning committee in September 2012, and construction is set to begin in March 2013, with the first students moving in from September 2015.

As part of the Phase 2 development, the University has inherited a Grade II listed, but much neglected pub, the Eagle and Ball, which it plans to restore and bring back into public use. We are also in discussions with British Waterways about opening up access to the canal at the rear of the site, to provide a pleasant waterfront location.



City Centre Campus plans

The rooftop topping-out ceremony

top 10%

in environmental league table



New facilities

A £2 million extension to our Seacole Building was opened in 2011/12

Final piece in health jigsaw

The 2011/12 academic year saw the opening of the University's brand new £2 million Seacole West teaching wing at the Faculty of Health in Edgbaston. As part of this project the refectory area was refurbished and opened up, a new social space and coffee area created, new classrooms provided and specialist facilities installed, including a new fully-functional radiography suite and 3D imaging diagnostic suite which is one of only a small number in the country. As a result of this, the University is now able to teach all of its health-related courses on one site, including diagnostic radiography, radiotherapy, speech and language therapy, and foundation degree courses in health and social care which were previously taught at the City North Campus in Perry Barr. The extension is part of the £30 million state-of-the-art Seacole Building which was opened in 2006, and won a Built in Quality award in 2007.

Making plans for a world-class Conservatoire

Birmingham Conservatoire, which celebrated its 125th anniversary in 2011, is an important part of ambitious plans to create a world-class cultural hub at the heart of the city. The Conservatoire will relocate from its current base in Paradise Circus as part of the wider redevelopment of the area and move to a new home at Louisa Ryland House on Newhall Street, close to the University's existing School of Art on Margaret Street. The design stage of this exciting project is progressing well and we are working to a programme for the building work to be complete and the new Conservatoire opening its doors to students in September 2015. To support the Conservatoire's world-class education this landmark building will be fully fitted with purpose-built facilities, while a new 450-seat concert hall will be built on the revamped Centenary Way, which will run from Centenary Square to Chamberlain Square.

New 'green' data centre

The Estates team has also worked alongside colleagues in Corporate ICT (CICT) to support their £2.7 million project to create a new network data centre for the University. As IT equipment becomes more widespread, it accounts for an increasing proportion of the University's energy consumption, which is why collaboration with CICT is key to achieving the University's CO2 reduction targets. The new data centre will be built in the most efficient enclosed hot/cold aisle arrangement, with in-row cooling units targeting cool air directly to the equipment. The central chiller plant will be highly efficient, with a free cooling capacity to take advantage of external conditions to reduce the year-round cooling requirement. These measures will reduce energy use by over a third compared with current provision.

Big investment in energy saving

During the course of the 2011/12 academic year, the Estates Department invested £100,000 in energy efficiency projects, including draught sealing and new boiler controls as well as incorporating energy efficiency into the University's new build and refurbishment projects. These projects are expected to save approximately 200 tonnes of CO2 annually, while the replacement of old building stock with new, highly-efficient buildings at the City Centre Campus will make a significant contribution to further reducing the University's carbon emissions. The University is a full participant in the Government's Carbon Reduction Commitment Energy Efficiency Scheme. The first Performance League Table for the scheme was published by the Environment Agency in October 2011 and the University was ranked 121st out of 1,301 participants and 8th out of the Universities included.

Transforming... our research



Our staff create new knowledge and know-how through their research and high-level practice to ensure our students have the most up-to-date courses and our external business clients receive the best advice and help. The knowledge we create benefits the economy, society, culture, environment and quality of life when it is applied by users outside the University. The University is currently developing a comprehensive new research strategy with a 10-year horizon, which will embrace all aspects of our research culture and highlight particularly the need to increase our investment in new knowledge creation to underpin existing courses, develop new courses, enhance our expertise base for external engagement and collaboration and differentiate our university education from lower-cost further education provision.

The Higher Education Funding Council's next audit of research excellence at UK universities, the Research Excellence Framework (REF2014), will take place in autumn 2013 and measures the excellence of our research against international quality benchmarks. At Birmingham City University, we value all forms of research equally, whether it is the world-leading research assessed by REF2014 or new-market and practice-based research that informs our engagement with external clients and our postgraduate teaching.

Professor Keith Osman
Director of Research and EU Funding Office

National Ecosystem Assessment

The University's Birmingham School of the Built Environment (BSBE) in the Faculty of Technology, Engineering and the Environment received £200,000 in funding to look at ways of improving environmental policy and decision-making, as part of the UK National Ecosystem Assessment (UK NEA) follow-on phase. First reported in June 2011, the UK NEA was the first comprehensive analysis of the UK's natural environment with regards to the benefits it provides to society and continuing economic growth and prosperity. The UK NEA delivered information on the possible future of terrestrial, freshwater and marine ecosystems across Britain and identified a number of uncertainties. The UK NEA follow-on phase is funded by the Department for Environment, Food and Rural Affairs (DEFRA), the Welsh Government and Research Councils UK. A two-year follow-on phase will help to further develop the UK NEA's views, tackle practical challenges and ensure more informed decision making. BSBE is leading this new research under the direction of Alister Scott, Professor of Environmental and Spatial Planning.

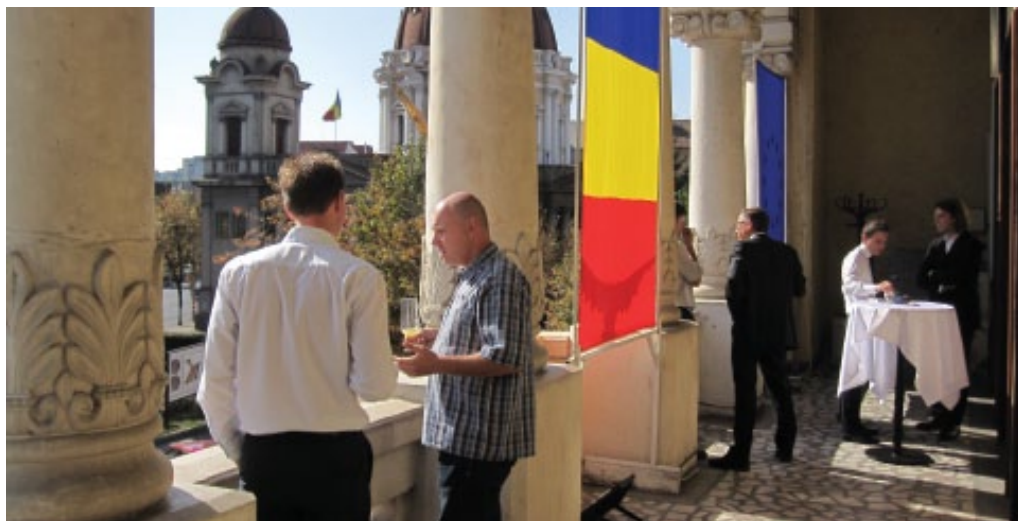
Smart Cities and the Cloud

Researchers from the Faculty of Technology, Engineering and the Environment (TEE) are bringing their software and database expertise to bear in a large European-funded Smart Cities project. The EPIC project is creating a European Platform for Intelligent Cities to deliver smart-city services to citizens, businesses and city administrations. The project consortium, led by iMinds in Belgium, builds on the strength of IBM's 'Smart Planet' vision and cloud computing infrastructure and includes the digital cities of Brussels, Issy-les-Moulineaux and Manchester; the user expertise of the European Network of Living Labs; university partners from Belgium, Germany, Greece and the UK; the consultancy expertise of Deloitte; and small and medium-sized enterprises from Belgium, France and Greece. The researchers from TEE are developing energy monitoring solutions for public buildings and domestic premises as part of the Smart Environment Pilot, which will be tested by citizens in Manchester and Tirgu-Mures, Romania.

£200k
for research into environmental policy

Digital inclusion for carers

Nigel Wynne is the Project Director for Birmingham City University's contribution to the DISCOVER project, based in the Faculty of Health; another large cross-disciplinary EU project to develop, pilot and conduct impact evaluation on approaches that aim to enhance digital literacy skills among carers of elderly people. Involving nine partner organisations and four pilot sites across the EU, the project will create a web portal allowing carers to engage in e-learning activities. The University is the main technology partner and has responsibility for e-learning resource creation and portal development and co-ordinating the input of six partner organisations and one subcontractor. DISCOVER will model and evaluate the use of online learning tools Moodle and Mahara to support academic credit and skills transfer across EU borders.



EPIC Smart Cities
A Smart Cities meeting in Romania

Cheapside Hoard

Keith Adcock, senior CAD/CAM technologist at the JIIC, at work

**Connected Communities**

Hidden Connections, Shared Environments and Environmental Flows – an Arts and Humanities Research Council-funded project under the Connected Communities programme pilot project in BIAD – is exploring the impact of an intervention on the community in terms of identifying and facilitating connections that occur through the use of the local environment where the experience of the environment, as an everyday event, is by all local citizens via their daily activities. Here research suggests that the cultural and personal connections that are made can be profound and positive, but frequently remain unexpressed or hidden. Professor Richard Coles, working with David Prytherch, will be looking at how the proposed intervention, ‘self-narrated walking’, develops collaboration with a local community group ‘Guiding Stars’. At the heart of the pilot study is identification of the impact of the intervention, the acceptability to the local community and their reaction thus establishing the pathways that should be followed to further explore this approach within the context of connecting communities.

Developing research students in the arts

Anne Boultonwood, from Birmingham Institute of Art and Design (BIAD), is running an Arts and Humanities Research Council project that supports the career development of research students and early career researchers, while at the same time enhancing our public engagement and developing collaborative relationships with external organisations. The project involves a consortium of four university art and design faculties – BIAD as project lead, and those of Nottingham Trent University, Sheffield Hallam University and Coventry University. External partners include cultural, social and commercial organisations. Knowledge exchange will be achieved through residencies in which researchers will be paired with partner organisations to work on an agreed project for three to five days. The residencies will facilitate the cross-fertilisation of ideas and approaches, and will sow the seeds of more long term collaboration and training. The project will result in the development of case study examples of good practice; these will support our own future training, and will also be published on our website, making them available to a wider audience.

Jewellery experts analyse the Cheapside Hoard

Experts from the University’s Jewellery Industry Innovation Centre (JIIC) have been using the latest technology to find out more about the history of a priceless stash of late 16th and early 17th century jewels and gemstones found under a London cellar. The Cheapside Hoard is set to go on display at the Museum of London in 2013, and the JIIC has been using the latest computer aided design/computer aided manufacturing (CAD/CAM) technology to create digital scans of the artefacts and create exact replicas of selected items so that visitors to the museum can handle pieces of jewellery which are virtually identical to the real thing, without putting the artefacts themselves in danger of being damaged. Analysing the jewellery in this way gave a better appreciation of the quality of workmanship that was possible at the time, despite limited technology.

**Cheapside Hoard**

One of the replica items made by the JIIC

Academic leads education debate

An academic from the School of Education is leading debate on educational policy after analysing the effect of national targets on teachers and pupils. Professor Martin Faultley found that some schoolteachers felt under pressure to change pupils' marks in order to make academic progress seem more obvious – a revelation that was covered by national media including the Independent, the Telegraph and the BBC. His research has been credited for looking at practical, real-world solutions to the problem and highlighting the detrimental effect that targets can have in the classroom. Professor Faultley said: "Teachers need to stop being judged solely by the overall attainment of their pupils. In my experience, some pupils will do very well if you let them work by themselves without constant formal assessment. In other instances, a teacher may have worked very hard with an individual pupil to help raise their grades from an 'F' to a 'D'. I think it is these sorts of achievements which need to be better recognised."

Novel mark-up tool for academic texts

Within the Centre for Research in English Studies, in the Faculty of Performance, Media and English, the Research and Development Unit for English Studies has made great strides with their unique eMargin software project funded by Jisc, giving presentations at the British Library, the Higher Education Authority conference and elsewhere. The project is developing a web-based system which allows students to annotate electronic texts and share these notes with each other. The system, called eMargin, will offer a digital equivalent of the marginalia associated with the academic study of texts, from underlining and colour-coded highlighting, to notes and comments on particular parts of the page. The study of English Literature could be transformed by the use of this software, as a longstanding problem is that the material being studied – the literary text – is often many hundreds of pages in length, yet the teacher must focus class discussion on particular themes and passages.



How footwear can boost athletes' performance

Running shoes built on the same principles as the 2010 World Cup football could improve athletes' performance on the track. A team of researchers – led by Professor Robert Ashford, Director of Postgraduate Research Degrees at the Faculty of Health – studied the performance of four running shoes and measured the aerodynamic drag on each by placing them on a mannequin's foot which was inserted into a wind tunnel. They concluded that the aerodynamics of a running shoe – both in terms of upper shoe design and the overall composition of the frontal aspects – could affect a runner's performance on the track. Professor Ashford said: "One could speculate and argue that if indeed aerodynamics is found to be important in a long distance race, and if the athlete is biomechanically compromised in terms of their swing pattern, total shoe design may prove to be important in energy consumption and ultimately the finishing time for such an individual – whether they are a professional or an amateur."

Running shoes

Teacher training student and Commonwealth Games silver medalist Michelle Thomas, and Tipton Harriers runner Ellis Sabin

Transforming... our international relationships



The University's faculties and the International Office collaborate to deliver our aspirations for international recruitment, alliance- and partnership-building, and globalisation of the learning experience, as well as building our future internationalisation strategy. The International Office works alongside our schools and faculties to support the recruitment and admission of international students and to identify partnership development opportunities that extend our global reach.

During the past year, the University has concluded a partnership agreement with Navitas to create a new International College based in Birmingham; established new partnerships in Hong Kong and India; provided educational advice and support to overseas governments; engaged in pioneering trans-EU collaborative research and supported a regionally-based engineering company through international collaborative consultancy. The University also successfully underwent its first audit by the UK Border Agency, which expressed confidence in our international admission and marketing procedures.

Cheryl Badhams
Director of International Office



Art and Design

The validation event for the new programmes in Chennai

Nigerian students get taste of UK university life

In July 2012 the International Office, in conjunction with the Faculty of Technology, Engineering and the Environment and Birmingham City Business School, organised a two-week taster session for 18 students from Covenant University, a large private Christian university situated in Ogun State, Nigeria. The University organised interactive workshops, which featured practice-based teaching in such programmes as Mechanical Engineering, Project Management, Enterprise Systems Management and International Human Resource Management. Students found the group exercises fun, challenging and interesting, and appreciated the approachable staff, professionally-orientated modes of learning, and the relevance of the video and web applications, problem solving and advanced Excel techniques.

Birmingham City University International College

The University has concluded a partnership agreement with Navitas, a leading global education provider, to establish Birmingham City University International College. The College will open in September 2013, to deliver bespoke foundation pathways in art and design, business, computing, engineering and law. International students who successfully complete their pathway with BCUIC will be eligible to continue their studies on undergraduate and postgraduate programmes at Birmingham City University. The College offers an exciting opportunity to grow and diversify the student population, and to enhance the educational experience of all students at the University.

India design partnerships confirmed

Birmingham Institute of Art and Design has successfully validated two partnership programmes in India, ahead of teaching getting under way in 2012/13. The Institute for Technology and Management will deliver programmes in BA (Hons) Fashion and BA (Hons) Interior Design at its main campus in Mumbai, while the Image College of Arts, Animation and Technology (ICAT) will deliver BA (Hons) Fashion and Communication Design, Design Study (leading to either BA (Hons) Interior Design, BA (Hons) Product Design or BA (Hons) Interior Products) and BA (Hons) Communication Design at its Chennai campus. ICAT will also look to extend its reach into Hyderabad and Bangalore from 2013/14 and beyond.

Bespoke training

Saudi government officials at the University



Supporting technical education in Sri Lanka

The University has been successful in securing funding from the World Bank to improve technical education provision in Sri Lanka. The Enhancement and Upgrading of Technical Education project, supported by the governments of Austria and The Netherlands, aims to strengthen the capacity of Sri Lanka Institute of Advanced Technological Institutes (SLIATE), which in turn manages and supervises technical education and training throughout the country. Birmingham City University is delivering the Capacity Building and Training component of the project, under which the Faculty of Technology, Engineering and the Environment received 10 SLIATE academic staff to pursue their postgraduate programmes.

Scholarship programme

Sharafath Yoosuf from the University with Mahmoud Mouselli, Regional Manager - British Council Services for International Education Marketing for Saudi Arabia



Training Saudi government officials

The School of Education was chosen to deliver bespoke training for two groups of Saudi government officials in July 2012. This programme was designed to develop an understanding of the 'Learning Organisation' for the Kingdom's area managers and members of the Education Department. Further links resulted in a group of students from the country's King Abdullah Foreign Scholarships Program for Preparing Technical Trainers (KASPTT) scholarship programme enrolling on courses at the University.

Pre-sessional courses delivered overseas

The International Office worked with the Centre for Academic Success to deliver the pre-sessional English course in Beijing, Shanghai, Nanjing, Bangkok and Taipei in the summer of 2012. Over 100 international students studied the course in their own country and subsequently came to study undergraduate and postgraduate programmes at the University. The delivery of the in-country courses was supported by the University's overseas offices and bases.

New business programme proves popular

Birmingham City Business School and the International Office successfully worked together to recruit over 70 students onto their newly-designed 18-month MSc Management and International Business programme. The programme was validated in June 2012, with the first students starting in October of that year.

Hong Kong franchise agreed

The Faculty of Technology, Engineering and the Environment received formal approval for its first international franchise with partner Continuous Professional Education Ltd, to deliver four top-up degree programmes in Hong Kong in building surveying, construction management, quantity surveying and real estate. The programmes are scheduled to commence in early 2013.



The EnAlgae project
Bio-reactors used for cultivation
of algae (provided by Varicon
Aqua Ltd)



International Office looks to broaden appeal

Over the past year, the International Office has been scoping opportunities for market diversification, particularly in North and South America, and South East Asia. We have expanded our North America recruitment reach and are seeking to capitalise on new state scholarship opportunities in Latin America, including the Science without Borders scheme in Brazil. The Office has also been expanding its recruitment of International Students who reside in the UK. Over the past year, the Office has consolidated its recruitment activities in South Asia, transferring both logistics and applications support to Colombo, which now serves both India and Sri Lanka.

International energy research collaboration

The University is involved in a major €14 million (approx £12.3 million) initiative to bring experts from across north-west Europe together to develop the potential of algae as a source of sustainable energy. The four-year Energetic Algae – or EnAlgae – project involves 19 Partners and 13 Observers across eight EU member states – France, Belgium, UK, Germany, Ireland, Netherlands, Switzerland, and Luxembourg – and aims to reduce CO2 emissions and dependency on unsustainable energy sources, through the accelerated development and deployment of algal-based biomass and bioenergy technologies. As a partner in the project, Birmingham City University's Centre for Low Carbon Research will be leading the development of a decision support system. Using expertise within its knowledge based engineering and bioenergy groups, this innovative and interactive tool will empower a range of stakeholders (from operators to policy makers) to make more accurate and informed decisions about bioenergy provision in the future.

Working with US partners to help British firm

Birmingham City Business School (BCBS) teamed up with the University of Redlands, in California, for a live consultancy project for a UK firm. The client for this first collaborative venture was Doncasters Group Ltd, based in Droitwich – a leading international engineering group that manufactures precision components and assemblies for the aerospace, industrial gas turbines, specialist automotive, petrochemical, construction, industrial, transportation and recreation markets. The experts met to put forward plans to help the company's ceramics division meet its growth expectations by considering alternative high-end market opportunities away from its current traditional core business of supplying the parent company.



Transforming... our academic leadership

Sharing expertise

Professor Christopher Prince, Executive
Dean of Birmingham City Business School,
addressing Birmingham's business leaders
at the International Conference Centre



Professor Stuart Brand



Professor David Wilson



Professor Christopher Prince

Teaching gets national recognition

Two outstanding academics from Birmingham City University have each been awarded coveted National Teaching Fellow status – the most prestigious award for excellence in university teaching and learning. The Higher Education Academy announced in July 2012 that Professor Stuart Brand, Director of Learning Experience, and Professor David Wilson, Director of the Centre for Applied Criminology, have been recognised under the National Teaching Fellowship scheme.

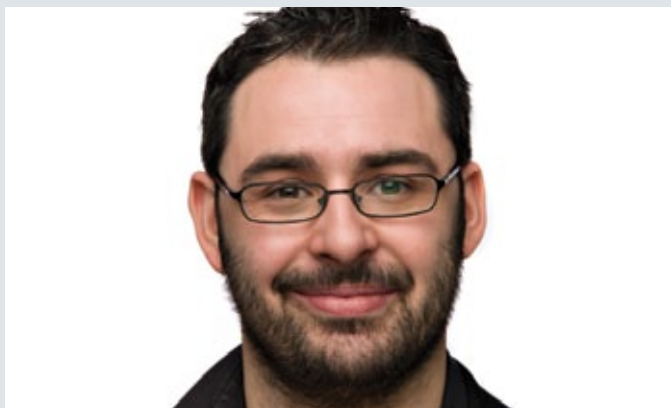
Professor Brand is architect of a radical restructure of the learning experience at Birmingham City University. Stuart passionately believes in a 'democratic' learning community, with a strong student-staff partnership at the heart of this process. Through innovative thinking, Stuart and his in-house 'learning lab' – the Centre for Enhancement of Learning and Teaching – have driven a University-wide focus on student academic engagement which has brought national and international recognition. He said: "I am delighted to receive

this Fellowship which I see as recognition in part for the terrific work that so many staff and students have done to develop such effective academic partnerships here at Birmingham City University."

Professor Wilson is one of the UK's leading criminologists and has advised on government prison policy, is a campaigner for penal reform and is trusted by millions because of his work with the media to help analyse serious crime. He recently fronted the popular Channel 5 programme Killers Behind Bars, which revealed his pioneering and exciting approach of taking real world research directly from the field of investigation and straight into the lecture room. He said: "I am thrilled and humbled to have my work recognised in this way. Birmingham City University is a wonderful place to teach students because the University has long championed the need to link academic theory to actual practice in the work place and in the community."

Dean joins global network

Professor Christopher Prince, Executive Dean of Birmingham City Business School, has been appointed to the influential Global Advisory Council of Global Marketing Network – the global accreditation body for marketing professionals. With over 20 years' experience of designing and delivering in-company education and training for private and public sector organisations in the UK and overseas, Professor Prince speaks at global conferences on corporate education and acts as an advisor to a number of leading blue-chip companies on management and organisational development. He said: "It is a very exciting time to be taking up this most prestigious appointment. I am delighted that Global Marketing Network has asked me to join its Global Advisory Council and I am looking forward to being able to contribute in whichever way I can in any areas the marketing profession feels I might be able to add value."



Dr Robert Lawson



Dr Eirini Mavritsaki



Professor David Saint

Research honour for lecturer

English lecturer Dr Robert Lawson received a Scottish Studies Fulbright Award to enable him to research at the University of Pittsburgh on one of the most prestigious and selective scholarship programmes operating worldwide. Created by treaty in 1948, the US-UK Fulbright Commission is the only bi-lateral transatlantic scholarship programme, offering awards for study or research in any field, at any accredited US or UK university. Robert said: "It's a privilege to have been chosen and I'm very excited to be part of one of the world's most prestigious exchange programmes. The Award is a once in a lifetime opportunity to develop my research on urban adolescent language use, to learn from some of the international leaders in sociolinguistics, and to build links between institutions in Scotland, England and America."

Prize for psychology research

A lecturer in cognitive psychology at the University has earned national acclaim from the British Psychological Society (BPS) for her latest research project. Dr Eirini Mavritsaki won the Cognitive Psychology Section Prize at the BPS's 2012 annual conference for her publication 'Bridging the gap between physiology and behaviour: Evidence from the sSoTS [spiking Search over Time and Space] model of human visual attention', where Eirini and her colleagues used computational modelling, behavioural and neuropsychological studies to map the neural structure of the brain. Eirini said: "This award is significant not only because it recognises all the hard work that has taken place by my colleagues and myself, but because it also highlights the importance of continuing this line of research."

Music fellowship award

Professor David Saint, Acting Principal of Birmingham Conservatoire, was one of five recipients of the prestigious Royal School of Church Music (RSCM) Fellowship award at a special ceremony which took place in July 2012 in Exeter Cathedral. The RSCM supports a worldwide network of over 8,000 churches, schools and individuals and is committed to achieving the best use of good music in worship. The Fellowship from RSCM was awarded to Professor Saint for his distinguished contribution in the field of church music, having been organist at St Chad's Cathedral in Birmingham since 1978. Professor Saint said: "It's a great honour to receive this award for doing something I enjoy. St Chad's is a historic building with a very long music tradition; it now has a very fine choir with many Conservatoire students and staff involved, and also one of the most highly acclaimed organs in the country."



Stefan Cash



Paul Laycock



Dr Caroline Archer

National recognition for caring record

A senior lecturer in child health in the Faculty of Health has received national recognition for his outstanding dedication to health services. Stefan Cash was awarded the prestigious Queen's Nurse title for his commitment to patient values and improving practice – including the development of a pre-hospital Paediatric Assessment course for ambulance staff, and improving the management of chronic and acute conditions within the school setting. On receiving the award Stefan said: "I am firmly committed to both improving and maintaining the high standards of practice and patient-centred care both in the community setting and in its wider context. I believe the award allows me the opportunity to work with colleagues who share the same values as myself, and most importantly learn from their experiences."

Leading new assessment scheme

An academic from Birmingham School of the Built Environment has been appointed as a 'super-assessor' by the UK's leading body for architectural technologists. Paul Laycock, course leader in Architectural Technology has been chosen to become one of the UK's first 'super-assessors' for the Chartered Institute of Architectural Technologists professional development and competence programme. This followed four years spent as a Professional and Occupational Practice (POP) assessor for the organisation. Paul explained: "For the foreseeable future there will only be four moderators in the UK and I have been asked to be one of the first two. In addition to the role described above, the first two will be formalising what the moderator role actually is and where and how it fits into the POP process."

At the forefront of specialist research

The University is home to a leading centre for research into the history, theory and practice of typographic design. The Typographic Hub, which is part of Birmingham Institute of Art and Design, was set up by Dr Caroline Archer, Reader in Typography. Over the past year, it has focused on two areas of study: a cross-disciplinary project looking at pioneering printer John Baskerville and the art, industry and technology of the Enlightenment; and a heritage project concerned with Watford's printing past. Dr Archer is widely published and maintains an active publishing programme of books and journals covering all aspects of typography, printing and the allied trades, as well as organising regular international typographic conferences, which attract expert speakers from around the world. The Typographic Hub maintains a specialist library – open to students, staff and the general public – and supports postgraduate students who want to conduct further academic work in this field. She said: "Although I have a particular interest in the typographic history of the Midlands, I am concerned with printing of all eras, from all nations and in all guises."

Transforming... our students' futures

Bright beginnings
Each year, our students go on to a range of successful careers

27th of 124

universities for the most students in graduate-level jobs (Sunday Times University Guide 2013)



University PR dominance continues

A Birmingham City University student was named as the Chartered Institute of Public Relations (CIPR) Midlands Student of the Year in June – the University's seventh consecutive winner of the award. Lucy Hird was selected for the accolade by a panel of judges, based on her final year campaign project as part of her Media and Communication degree course at our Birmingham School of Media. Her 'Beauty Recycled' campaign promotes sustainability in the world of beauty by encouraging beauty salons in Birmingham to recycle their waste in a bid to reduce the city's carbon footprint. The judges from the CIPR Midlands Committee praised Lucy's work for having a clear brand identity and for launching a campaign that has a captivating concept with a website that is being widely used.



Cornering the luxury market

One of the world's most expensive pens has been designed by an award-winning graduate from Birmingham City University. Jack Row, who lives and works in Birmingham's famous Jewellery Quarter, has launched his debut collection of luxurious precious metal fountain pens at Harrods, the world's most prestigious department store. Amongst Jack's designs is his exclusively hand-crafted white gold and diamond detailed fountain pen, currently on sale for £27,500 at the luxury London retailer. His 'Architect' collection of fountain pens and cufflinks are all individually hand crafted in solid silver and gold and set with accents of precious sapphires and diamonds. He said: "I wanted to create a collection of functional items that could be valued as much as objets d'art as fine jewellery or writing instruments. I hope they will appeal to discerning, design conscious individuals and collectors who wish to invest in exclusive British design and craftsmanship."



Top police role for University alumnus

Law graduate Makhdum (Mak) Ali Chishty has been appointed to one of the most challenging and high-profile positions in the police force as Commander for North London at the Metropolitan Police. Having joined as an 18-year-old, Mak rose through the ranks at Warwickshire Police to become Borough Commander for the town of Rugby, where he undertook a pioneering approach to community relations. He came to Birmingham City University as a mature student to study Law, before returning to the force. He received the Queen's Police Medal in 2009 and moved to London two years later. He was immediately thrust into action as the area hit the headlines during the riots of 2011, and is also an expert on the issue of 'honour killings'. He said: "My degree gave me so much knowledge that I have used in my career since. Although I had been involved in fighting crime all my life, knowing more about the history of crime and the theories behind it has really helped me."



Composer secures Proms commission

A graduate from Birmingham Conservatoire was commissioned to write a new work for the BBC Proms, forming part of the London 2012 Festival, the cultural celebrations of the Olympic Games. Charlotte Bray, who studied Composition and graduated from Birmingham Conservatoire with first-class honours in 2006, wrote 'At the Speed of Stillness' for Sir Mark Elder and the Aldeburgh World Orchestra to perform as part of Prom 21 on Sunday 29 July at London's Royal Albert Hall. Upon graduating from the Conservatoire, Charlotte went on to complete a Master's course at the Royal College of Music and was appointed as Birmingham Contemporary Music Group's composer-in-residence for the 2009/10 season. Charlotte also won The Royal Philharmonic Society's composition prize in 2010 and most recently was a judge at the 2012 BBC Young Musician competition.



Taking centre stage at Olympics

Anyone watching the medal ceremonies at the 2012 Olympic Games will have been watching the culmination of many months' work by a former Birmingham City University student. Dennie Wilson has built a successful career as a choreographer since graduating from Birmingham Institute of Art and Design, devising opening, closing and medal ceremonies for a wide range of sporting events, which made her the natural choice as Victories Ceremonies Producer – Athletics (Games Time) for the 2012 Olympics and Paralympics. This vital position saw her being responsible for the successful delivery of all victory ceremonies for athletics at the Olympic Stadium, together with medal and venue management, and press and broadcast liaison. She said: "This truly is a once in a lifetime opportunity – it's not often that people in the arts get the opportunity to represent their country in the same way that sports people do so I'm absolutely thrilled to be part of such a magnificent event."



Keeping shipping safe

Former paramedic science student Andy McLachlan is doing his bit to keep shipping safe from the threat of piracy by providing medical back-up on the patrol boats in some of the world's most dangerous waters. Since qualifying as a paramedic, he has split his time between working on ambulances in the UK and as a medic on armed anti-piracy ships in the Indian Ocean. Already working as an ambulance technician, Andy came to Birmingham City University to move up to the next stage of his career, and become a paramedic. Benefitting from the expert tuition and placement opportunities, he has been able to build an exciting and varied career since he graduated. He said: "Doors have been opened to just about every walk of life and employment – entry to the NHS, private providers of health services and the option to work abroad, as the paramedic qualification is highly regarded worldwide."



Overseas project leads to career success

The career relevance of James Farmer's BSc in Information and Communication Technology (ICT) gave him a competitive edge when it came to securing a position after graduation. He now works as an Infrastructure Engineer for Lockheed Martin, a leader in systems integration, working on major programmes across the aerospace, defence and civil sectors, and finds that the skills he learned relate directly to his new role. While at the University, James participated in the European Programme for Sustainable ICT in Academic Education (EPSIAE) project in Amsterdam, which he says gave him confidence in the interview with Lockheed. He said: "My degree focused highly on networking and infrastructure set up and support. This, and the availability of extra qualifications subsidised by the University, helped me get my job."



Blog opens doors

When Lily Pebbles Martin began her fashion, lifestyle and beauty blog as part of a digital marketing module, she had no idea how many doors would open up for her. Now, she has an online marketing job, attends regular press launches for new products, collaborates with brands such as Forever 21 and was nominated for a Marie-Claire blog award. Lily has also returned to the University as a guest speaker to encourage and inspire other marketing students. "When I tell people I started my blog as part of my course they're always so surprised and ask what course I took," says Lily. "I think it's so great that we were asked to create a blog and be a part of something so exciting and up-and-coming."

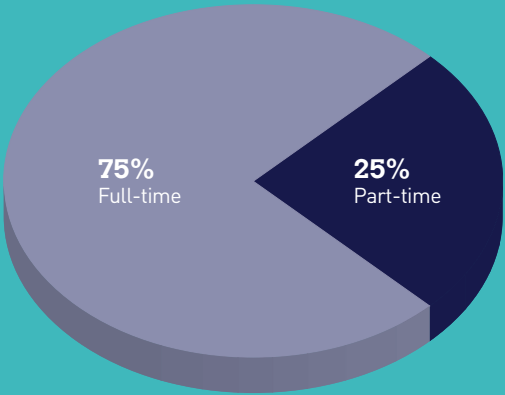
Key facts and figures

With around 23,500 students, Birmingham City University is one of the larger UK universities; a quarter of our students study part-time and over 2,000 are international students. We offer more than 350 undergraduate and postgraduate courses across our six faculties – Birmingham Institute of Art and Design; Birmingham City Business School; Education, Law and Social Sciences; Health; Performance, Media and English; and Technology, Engineering and the Environment. Here are some of our key facts, figures and achievements...

- Times Higher Education award winner for Best International Strategy (2011), Outstanding Support for Students (2010) and Outstanding Recruitment Campaign (2009)
- One of the Top 10 universities in the UK for spending on facilities (Complete University Guide 2013)
- 27th of 124 universities for the most students in graduate level jobs (Sunday Times University Guide 2013)
- One of the UK's top 20 universities for Media Studies, Art and Design, and Sociology (Guardian league table 2013)
- Grade 1 Ofsted 'Outstanding' awarded for our primary and secondary teacher training
- Winner of Higher Education Academy award 2011 for learning and teaching quality in the Faculty of Health
- 'Virtual Students' Union' won the award for best practice in the National Union of Students Student Engagement Awards 2011
- A student satisfaction rating of 83 per cent – with 87 per cent of our students agreeing that staff were good at explaining things and 86 per cent saying staff were enthusiastic about what they taught (National Student Survey 2012)
- Winner of Association of Graduate Careers Advisory Services (AGCAS) Entrepreneurship Award for BSEEN entrepreneurship programme
- 10th in the UK for our research into art and design (Research Assessment Exercise 2008)
- 3rd in the UK for music research at Conservatoires (Research Assessment Exercise 2008)
- The University contributes around £180 million to Birmingham's gross domestic product (GDP) and approaching 5,000 jobs in the city. On a regional basis, the University supports almost 7,000 jobs and contributes in excess of £270 million (source: Ecotec)

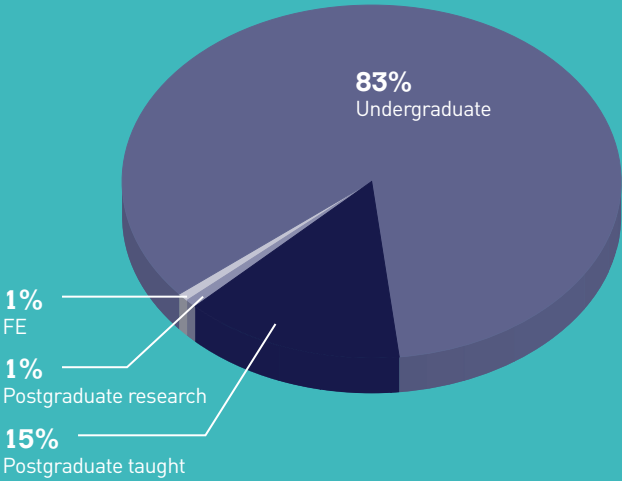
Attendance mode (HE+FE)

Full-time	17,600
Part-time	5,842
Total	23,442



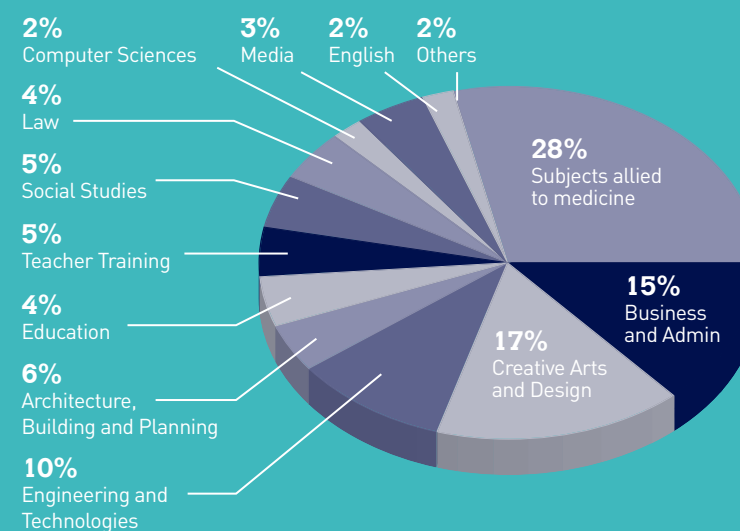
Students by level of course

	Full-time	Part-time	Total
Undergraduate	15,468	4,055	19,523
Postgraduate taught	1,799	1,621	3,420
Postgraduate research	97	127	224
FE	236	39	275
Total	17,600	5,842	23,442



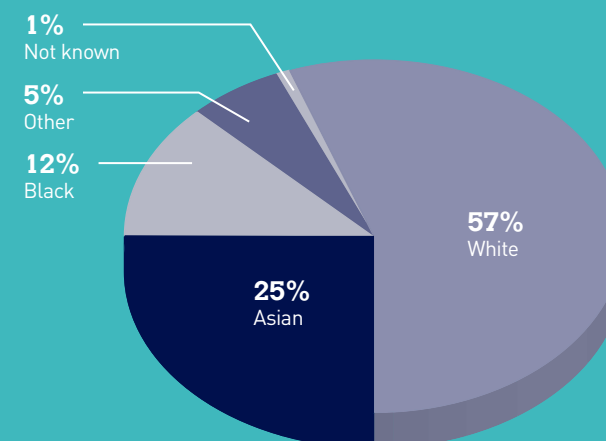
Choice of study by subject (HE+FE)

Subjects allied to medicine	6,500
Business and Admin	3,466
Creative Arts and Design	3,945
Engineering and Technologies	2,271
Architecture, Building and Planning	1,326
Education	929
Teacher Training	1,133
Social Studies	1,289
Law	922
Computer Sciences	488
Media	734
English	393
Others	48
Total	23,442



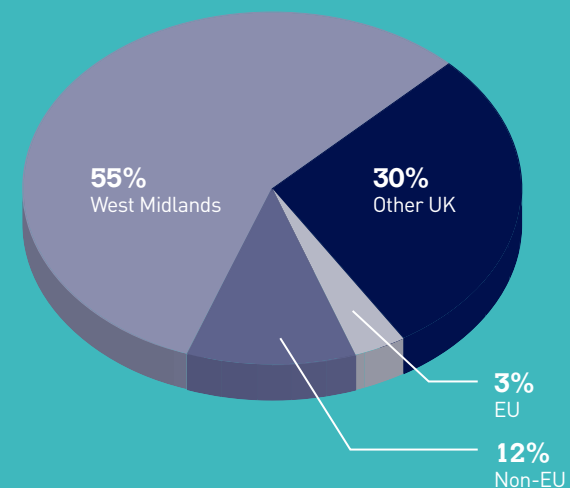
Student ethnicity (HE)

White	13,190
Asian	5,831
Black	2,820
Other	1,066
Not Known	260
Total	23,167



Student domicile (full-time HE)

West Midlands	9,571
Other UK	5,128
EU	578
Non-EU	2,087
Total	17,364



All staff by category 1 August 2011 to 31 July 2012

Activity - Summary	Headcount
Academic	1,323
Managers and senior administrative professionals	362
Other professional services and support staff	693
Visiting academics	421

Consolidated accounts for 2011/12

	2011/12 (£ million)	2010/11 (£ million)
Total income	162.8	169.6
Surplus for the year	14.8	13.5
General reserves at 31 July	95.8	88.6
Net cash inflow from operating activities	23.9	30.9
Cash at bank and deposits at 31 July	70.9	74.3
Capital expenditure during the year	28.9	11.8

Key officeholders

Key officeholders who held office during the 2011/12 academic year

Chancellor (role taken up annually by the Lord Mayor of Birmingham)

Councillor Anita Ward (to May 2012)
Councillor John Lines (from June 2012)

Board of Governors

Pro-Chancellor and Chairman
Mr Alex Stephenson, CBE
Pro-Chancellor and Deputy Chairman
Mr Vic Cocker, CBE

Other Members

Dr Waqar Azmi, OBE (from 1 April 2012)
Mr Jim Beeston, OBE
Professor Stuart Brand
Councillor Randal Brew, OBE (to 31 March 2012)
Honorary Alderman John Charlton, CBE
Mr Robin Eves (to 30 June 2012)
Rt Hon Lord Grocott of Telford
Mr Elgan Hughes (from 1 July 2012)
Ms Ann Jones
Mr Joe Kelly
Ms Jenny Ladbroke
Ms Nicky Lloyd
Ms Jenny Loynton
Mr Andrew Messenger
Professor David Roberts
Mr Raaj Shamji

Mr David Slade (to 28 November 2011)
Mr Shaun Smith (from 29 November 2011)
Professor David Tidmarsh

External Members of Board Committees

Audit Committee

Mr Nigel Gilpin
Mr Colin McGhie (to 31 July 2012)
Mr Shaun Smith (to 28 November 2011)

Trustee Committee

Mr John Crabtree, OBE

Senior Staff of the University

Vice-Chancellor
Professor David Tidmarsh, BSc (Hons), PhD, CEng, FIMechE, FCMI
Pro-Vice-Chancellor
Professor Mary Carswell, MBA, BSc, Chartered MCIPD
Pro-Vice-Chancellor
Ms Sally Westney, BA, Cert Ed
Chief Operating Officer
Ms Maxine Penlington, BA
Director of Finance and Resource Allocation
Mr Richard Spilsbury, BSc, MSc FCA
University Secretary
Ms Christine Abbott, BA (Hons), MA, DMS

Our proud heritage

Victorian masterpiece
The University's origins date back to
the establishment of the School of Art

Birmingham City University's timeline

- | | |
|--|---|
| <p>1843 Marks the origins of Birmingham City University with the opening of the Birmingham Government School of Design</p> <p>1859 A music department is established by the Birmingham and Midland Institute</p> <p>1884 The Design School evolves into Birmingham College of Art, moving to a beautiful purpose-built Venetian Gothic building on Margaret Street</p> <p>1886 Birmingham School of Music opens; it will be renamed Birmingham Conservatoire a century later</p> <p>1888 Birmingham School of Jewellery formed, initially as a branch of the Birmingham College of Art</p> <p>1909 Birmingham School of Architecture established, receiving recognition by the Royal Institute of British Architects (RIBA) in 1923</p> <p>1916 Birmingham College of Commerce is set up</p> <p>1961 South Birmingham Technical College is opened</p> <p>1966 North Birmingham Technical College is opened</p> <p>1971 City of Birmingham Polytechnic designated, bringing together these various colleges and specialist schools into one institution</p> | <p>1975 A further three teacher training colleges are incorporated into the Polytechnic – Anstey College of Physical Education, Bordesley College of Education and City of Birmingham College of Education</p> <p>1988 Bournville College of Art incorporated into the Polytechnic. This newly-merged specialist art and design provision is designated as Birmingham Institute of Art and Design (BIAD)</p> <p>1989 Birmingham School of Music renamed Birmingham Conservatoire</p> <p>1992 The Polytechnic becomes the University of Central England in Birmingham</p> <p>1995 Birmingham and Solihull College of Nursing and Midwifery and the West Midlands School of Radiography are incorporated into the University</p> <p>2001 Following the creation of the Royal Centre for Defence Medicine and the decision to locate in Birmingham, with its nursing education based at Birmingham City University, the Defence School of Health Care Studies is established within the Faculty of Health</p> <p>2007 To reflect its pride in the city, the University changes its name to Birmingham City University</p> |
|--|---|

Birmingham City University
City North Campus
Perry Barr
Birmingham
B42 2SU
United Kingdom

t: +44 (0)121 331 5000
www.bcu.ac.uk