

Connecting to eduroam via Apple iPad

The following instructions are intended for users who wish to connect to the eduroam wireless network using the Apple iPad.

1. Browse to the **[Settings]** icon on your device. From the menu that appears, select **[Wi-Fi]** and ensure that your Wi-Fi service is switched on. If you are within range of the "eduroam" service, it will be displayed in the **[Choose a Network]** list (Figure 1).
2. Select "eduroam" and you will be prompted to enter your credentials. (Figure 2). Enter your username in the following format (as below), followed by your normal password.

Student User: *firstname.lastname@mail.bcu.ac.uk*
Staff User: *firstname.lastname@bcu.ac.uk*

3. Once you have entered your credentials you will be prompted to accept a certificate called, **radius.bcu.ac.uk** (Figure 3). Click **[Accept]**. Your service is now ready to use.



Figure 1



Figure 2

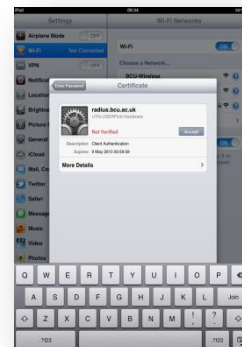


Figure 3

Users of the eduroam service must abide by Birmingham City University's [Code of Conduct](#), and any equivalent policies at visited institutions, in addition to the [Janet eduroam Policy](#).

It is the responsibility of the user to ensure their device is password protected to secure any saved credentials stored on the machine used for accessing eduroam. This may be in the form of a passcode on a mobile apple device for example, or windows user account equivalent.

If you are having trouble connecting to eduroam using these instructions please contact IT Help on 0121 331 6543 or ithelp@bcu.ac.uk for further assistance.