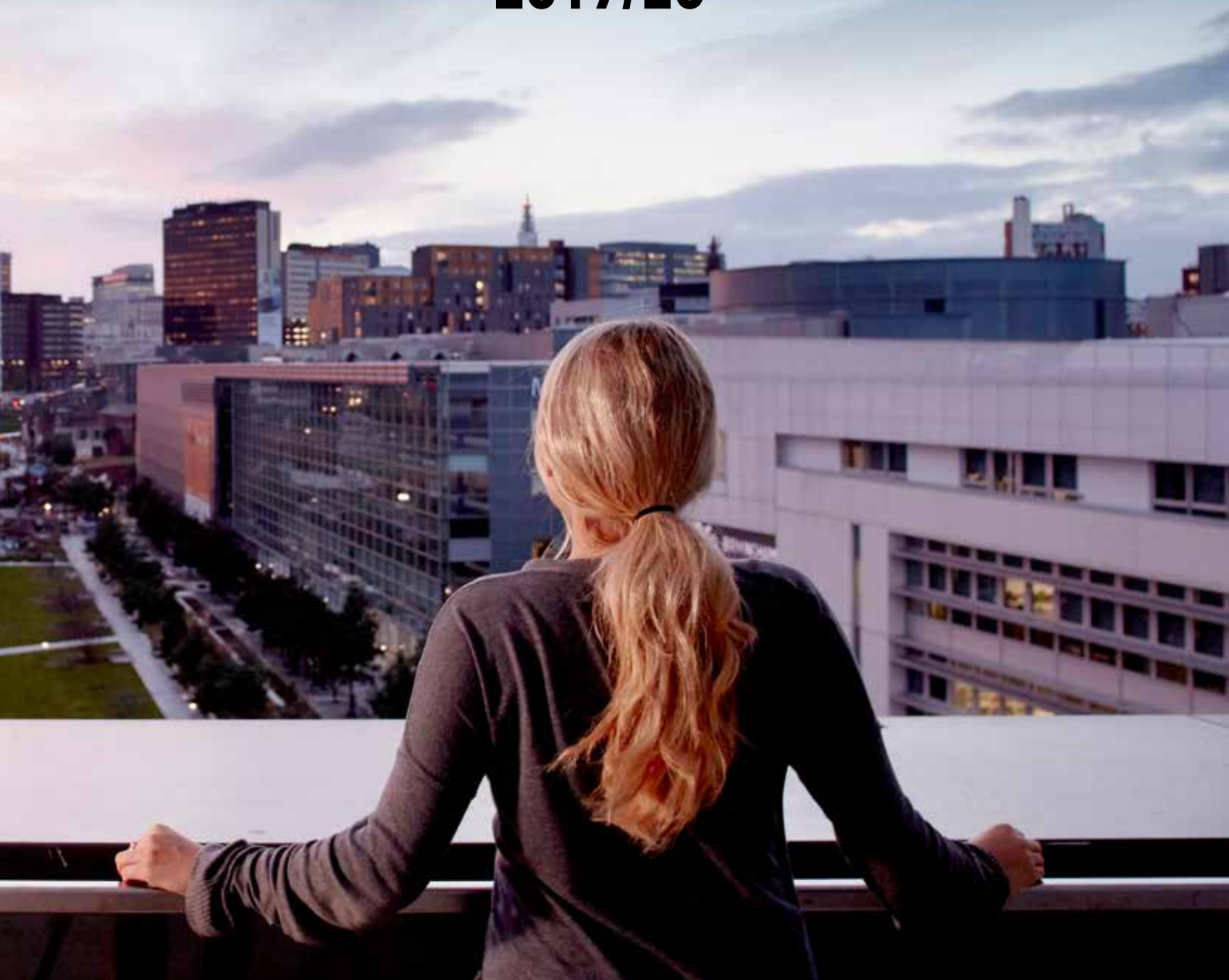




**BIRMINGHAM CITY**  
University

# INTERNATIONAL GUIDE

**2019/20**



# CONTENTS

4	Welcome to BCU
14	Our campuses
30	Student life
42	Our courses
60	Your arrival
68	How to apply





# WELCOME

**BIRMINGHAM CITY UNIVERSITY IS SITUATED IN THE HEART OF BIRMINGHAM, WHICH IN TURN IS LOCATED IN THE CENTRE OF THE UK. WE ARE IDEALLY PLACED TO EXPERIENCE THE EXHILARATING CULTURAL, SOCIAL, ECONOMIC AND PHYSICAL CHANGES THAT ARE TRANSFORMING OUR CITY FOR THE FUTURE.**

Located just over an hour from London, we offer our students a friendly study environment in the UK's second largest city, as well as excellent facilities, following our recent £260 million investment programme.

We've built strong partnerships with both students and industry professionals to offer an inspirational learning environment. We've helped to enrich the lives of leading architects, designers, lawyers, engineers, healthcare professionals, musicians and many more. Our innovative teaching methods, ground-

breaking research and industry collaborations are backed by around 50 professional accreditations, providing you with an education that not only works in the classroom, but in the real world for when you graduate.

You'll share your university with 24,000 students from over 80 different countries, and we ensure that everyone feels right at home here in Birmingham with guaranteed accommodation for international students, a meet and greet service at Birmingham Airport and a friendly Student Services team

whose priority is to help make your move between countries as easy as possible.

This guide will give you a flavour of the exciting courses you can study at Birmingham City University. If you would like to know more, please don't hesitate to get in touch and we hope to see you in person soon.

Please note that the information in this guide is aimed at applicants starting their course at Birmingham City University in 2019/20 and should be read in conjunction with the information available on the course web pages.

#### IMPORTANT LEGAL INFORMATION

Birmingham City University's Terms and Conditions are available on The Student Contract web page [www.bcu.ac.uk/student-info/student-contract](http://www.bcu.ac.uk/student-info/student-contract). The Terms and Conditions set out the basis of the legal contract between you and the University in the event you accept an offer of a place to study with us. It is important that you read this document carefully.



97%

of our graduates are in employment or further study within six months of graduation

# WHY STUDY WITH US?

HERE ARE OUR TOP 10 REASONS TO CHOOSE BIRMINGHAM CITY UNIVERSITY.

## 1 WORK WITH GLOBAL BRANDS

We have a large number of industry partners and work with big-name employers like the BBC, the NHS, Jaguar Land Rover, Cisco, Microsoft and the Royal Shakespeare Company. All of our courses incorporate work-related experience, with the majority giving the option of a year-long placement.

## 2 INTERNATIONALLY ACCREDITED COURSES

Around 50 of our courses have internationally recognised accreditations, such as the Nursing and Midwifery Council, Chartered Institute of Management Accountants and Royal Institute of British Architects.

## 3 A GLOBAL CITY

Study with us and you will be located at the heart of the dynamic city of Birmingham – with all its social and employment possibilities. In fact, Birmingham was recently declared the most rapidly improving city in the country in which to live and work (Good Growth for Cities index 2017).  
See page 34.

## 4 ENHANCING CAREER PROSPECTS

We offer career support and advice throughout your time with us and for up to five years after you graduate. Our Graduate+ scheme embeds career-related skills into every one of our degree courses, from becoming a course rep to studying abroad.  
See page 28.

## 5 LEARN FROM THE BEST

Our teaching staff come from and maintain links with industry. Eight of them are National Teaching Fellows – the most prestigious award for excellence in university teaching and learning.

## 6 PRACTICE-BASED RESEARCH

Almost 90% of our research was judged to have delivered 'outstanding' or 'very considerable' external impact (Research Excellence Framework 2014).  
See page 28.

## 7 TRANSFORMED TEACHING

We have transformed our curriculum with a new range of contemporary, flexible courses. We have built practice-based learning and international opportunities into every stage of our programmes. We were awarded silver status for our quality of teaching in the government's Teaching Excellence Framework (TEF) 2017.

## 8 EARN WHILE YOU LEARN

Our student employment agency, OpportUNity – Student Jobs on Campus, allows you to apply for paid roles at the University (subject to any visa restrictions), gaining experience in crucial aspects of job applications and valuable feedback on your work.

## 9 INVESTING IN YOUR FUTURE

We have invested £260 million in industry-standard, state-of-the-art facilities to ensure you have the best possible environment for practice-based learning.  
See page 20.

## 10 HELPING YOU INTO WORK

Our commitment to ensuring students develop the skills and experience employers need means that 97% of our graduates are in employment or further study within six months of graduation (Destinations of Leavers from Higher Education survey 2016/17).

Local transport is also excellent, with a network of trains, buses and a recently extended tram network providing easy access to all University sites.

[www.bcu.ac.uk/maps](http://www.bcu.ac.uk/maps)

# THE HEART OF THE UK

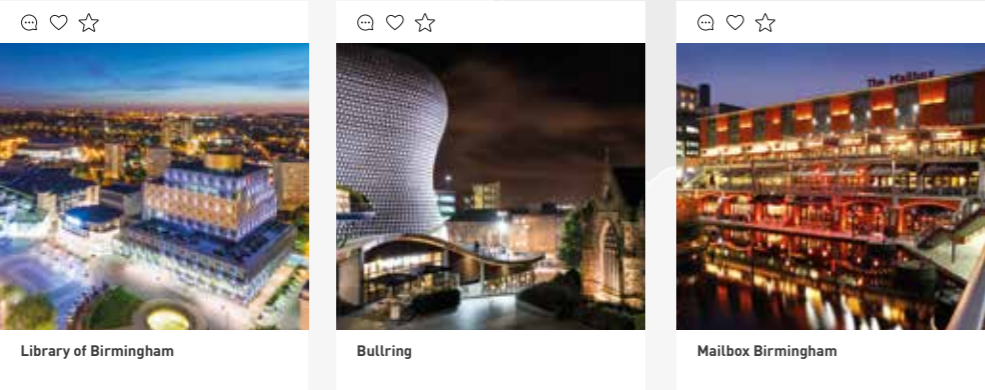
Not only is Birmingham one of the UK's most exciting and diverse cities, it is also one of the most accessible. We are at the centre of the UK's road, rail and coach networks, so travelling further afield is no problem.



**FLIGHTS:**

BIRMINGHAM – AMSTERDAM	1h 15m
BIRMINGHAM – PARIS	1h 20m
BIRMINGHAM – BUCHAREST	3h 20m
BIRMINGHAM – ISTANBUL	3h 55m
BIRMINGHAM – DOHA	6h 40m
BIRMINGHAM – DUBAI	7h 10m
BIRMINGHAM – ISLAMABAD	7h 40m
BIRMINGHAM – NEW DELHI	8h 30m

All journey times are approximate and may involve transfers.





# STUDYING IN THE UK



**WHETHER YOU WANT TO KICKSTART A SUCCESSFUL CAREER, GAIN WORLD-RECOGNISED QUALIFICATIONS OR HAVE AN ADVENTURE, YOU'LL FIND THAT THE UK HAS A HUGE AMOUNT TO OFFER.**

- Open the doors to your dream career**  
You'll gain skills and qualifications to help you succeed in any career you choose.
- Perfect your English**  
The UK is the top destination worldwide for English language study, with courses for all ages and abilities.
- Have the adventure of a lifetime**  
Studying in the UK is an opportunity to discover its unique culture, cities and countryside – from music and sports to history and heritage.
- Join a friendly international community**  
The UK is a welcoming place for students of all nationalities, cultures and faiths, home to over 435,000 students.

- Study your own way**  
Did you know you can do a UK course at an overseas campus or online?
  - Discover, create, innovate!**  
The UK is one of the most exciting and productive places in the world for research, creativity and innovation. If you have a passion for learning and want to be at the forefront of your subject, this is the place to be.
  - Get great value for money**  
UK education can be affordable, and UK qualifications are a great boost to your salary as well as your CV.
- Find out more at the Education UK website: [www.educationuk.org](http://www.educationuk.org)

# SUCCESS STORIES

**WHETHER IT IS SETTING UP SUCCESSFUL COMPANIES OR PREDICTING THE LATEST FASHION TRENDS, OUR GRADUATES ARE SHAPING THE WORLD WITH THE SKILLS THEY HAVE HONED RIGHT HERE.**

**TO SEE MORE OF OUR FORMER STUDENTS' ACHIEVEMENTS, VISIT [WWW.BCU.AC.UK/STORIES](http://WWW.BCU.AC.UK/STORIES).**

## BLOGGER

### LILY PEBBLES

BA (Hons) Marketing, Advertising and PR

When Lily began her beauty and lifestyle blog as part of a digital marketing module, she had no idea how many doors would open up for her. Now she runs her blog and YouTube channel full-time, collaborates with brands such as ASOS and won a Johnson & Johnson Journalism Award for Best Independent Beauty Blogger.



## GRAPHIC ARTIST

### YIFAN LING

(MA) Visual Communication

Yifan has been creating manga comics professionally ever since she graduated in 2006. Now she has published more than 20 books internationally and her own online manga story 'Guarding' is now being developed into a television show and film..



## LAWYER

### RACHELLE HARRISON

LLB (Hons) Law with American Legal Studies

Barrister Rachelle was called to the Bar aged just 22 and has gone on to work for the Crown Prosecution Service and international human rights organisations. She also mentors law students and trainees, has set up a network for new barristers and founded a youth club in her local area.



## JEWELLERY DESIGNER

### FEI LIU

BA (Hons) Jewellery and Silversmithing

After graduating, Liu went on to establish Fei Liu Fine Jewellery and has since received worldwide recognition receiving prestigious awards such as Harper Bazaar's China Jewellery Designer of the Year. He's also gained a celebrity following in David Beckham and Lisa Edelstein.



## VISIONARY

### ASHLEY INNIS

BA (Hons) International Business Management

Ashley has played a key role in many of the projects reshaping the face of Birmingham, including as Communications and Engagement Manager for Grand Central Birmingham, overseeing the centre's transformation into a new premium shopping and dining destination.

# CITY CENTRE CAMPUS

## FACILITIES INCLUDE:

- Cisco networking lab
- City trading room
- Curzon Print Centre, including Kodak self-service booth
- Dedicated IT and student services support
- Four industry-standard TV studios
- Geotechnical soils lab
- Green screen MLO studio
- Hydraulics lab
- Law courts
- Library with access to printed and online resources
- Noise and vibration cells
- Photography studios and darkrooms
- Print, textiles, wood, ceramics and glass workshops
- Radio studios and editing suites
- Recording facilities and vintage mixing desk
- Robotic laboratory
- Specialist drama studios
- Students' Union



City Centre Campus and Eastside City Park



**WE HAVE INVESTED £260 MILLION ACROSS OUR BUILDINGS AND FACILITIES, TO GIVE YOU THE VERY BEST LEARNING ENVIRONMENT TO SHAPE YOUR EXPERIENCE**

This campus at the heart of Birmingham's fast-developing Eastside district, and just a short walk from the city centre, is where most students on courses including Music, Design, Media, Acting, Engineering, Computing, Digital Technology, Built Environment, Law, Social Science, Business and English are based.

The campus also features library, IT and student support facilities, giving a modern, dynamic space for you to learn in with state-of-the-art resources. An extension to the campus opened in 2018, with more learning space, another IT suite and an innovative group-working lecture theatre. It also provides a base for our Students' Union, incorporating the Grade II listed Eagle and Ball pub.

Our facilities are located alongside Eastside City Park – the first new urban park in Birmingham for over 130 years, which provides a superb space for relaxing in summer as well as a venue for events and activities.



## ROYAL BIRMINGHAM CONSERVATOIRE

A new £57 million building at our City Centre Campus, opened in 2017, provides a conservatoire for the 21st Century. Our music students benefit from a new concert hall, private rehearsal and practice rooms, and teaching spaces for musicians from a variety of disciplines.

### FACILITIES INCLUDE:

- Five performance venues, including a 500-seat concert hall
- A 150-seat recital hall and smaller experimental music space
- Organ room and dedicated jazz venue
- Over 70 dedicated practice rooms.





# CITY SOUTH CAMPUS

## FACILITIES INCLUDE:

- Mock hospital wards and operating theatre
- Virtual radiotherapy and radiography imaging suites
- Simulated home environment
- Replica school classrooms
- Physiology and biomedical science laboratories.

The new building at our City South Campus

**STUDENTS ON HEALTH, SPORT, LIFE SCIENCES AND EDUCATION COURSES ARE BASED ON OUR STATE-OF-THE-ART CAMPUS IN THE LEAFY SUBURB OF EDGBASTON, WITHIN EASY REACH OF THE CITY CENTRE.**

Our realistic learning environment includes an operating theatre, hospital wards and a fully equipped midwifery skills/birthing room, as well as sport and life sciences laboratories and replica classrooms for use by our teaching students.

We have invested £41 million in new facilities on this site including specialist laboratories for the School of Health Sciences, as well as a new home for the School of Education and Social Work.



## SPORT AND LIFE SCIENCES

The creation of our new suite of courses in Sport and Life Sciences is yet another exciting development at Birmingham City University.

Not only have we invested in a new building to house the laboratories and teaching spaces needed, but we also plan to open up these facilities to benefit all students and the wider community.

All courses have been co-designed with employers and are endorsed or accredited by professional bodies where appropriate.

By expanding our provision to these areas, we will be helping to tackle some of the biggest challenges facing society today, such as obesity and unhealthy lifestyles, as well as supporting the UK's ambitions for success at international sporting tournaments, including the 2022 Commonwealth Games in Birmingham!



**IN ADDITION TO OUR TWO  
MAIN CAMPUSES, OUR ART  
AND JEWELLERY STUDENTS  
BENEFIT FROM STUDYING  
AT SPECIALIST LOCATIONS  
IN THE CITY.**

Both of these architectural  
gems have a long history  
and heritage of learning, as  
does our Bournville site for  
international students.

**BIRMINGHAM SCHOOL  
OF ART, MARGARET STREET**

Floating mezzanine levels, glass lifts  
and cutting-edge workspaces sit  
comfortably beside the original stained-  
glass windows and mosaic floors of this  
glorious purpose-built art school.

This Grade I listed Venetian Gothic  
building houses a wonderful complex  
of traditional-style workshops and  
teaching and exhibition space.



**FACILITIES INCLUDE:**

- Light and airy studios
- Gallery and installation space
- Fine art library
- Woodwork, metal, plaster, fibreglass and ceramics workshops
- Digital media, print and photography workshops.

**SCHOOL OF JEWELLERY  
VITTORIA STREET /  
ASSAY OFFICE**

One of the most significant jewellery  
schools in the world stands in a modern  
and spacious building right in the heart of  
Birmingham's famous Jewellery Quarter,  
where much of the jewellery made in  
Britain today is manufactured.

Gemmology courses are based in a  
purpose-built area within Birmingham's  
new Assay Office.



**FACILITIES INCLUDE:**

- Specialist studio workshops
- Casting facility and electroplating laboratory
- Machine workshop including laser welders and laser cutters
- Exhibition space and specialist library
- Stores for materials and tools.

**BOURNVILLE**

Pre-entry international students are located  
in the peaceful and leafy surroundings  
of our Bournville site, in the south of the  
city. Located in the idyllic setting of the  
Bournville Village Trust conservation area,  
this site has a 100-year pedigree as a centre  
of learning.

It is home to Birmingham City University  
International College, which provides  
bespoke pathways for overseas students,  
leading to undergraduate and postgraduate  
courses at the University.

School of  
Jewellery



# THE FACILITIES YOU NEED



## THE SHELL

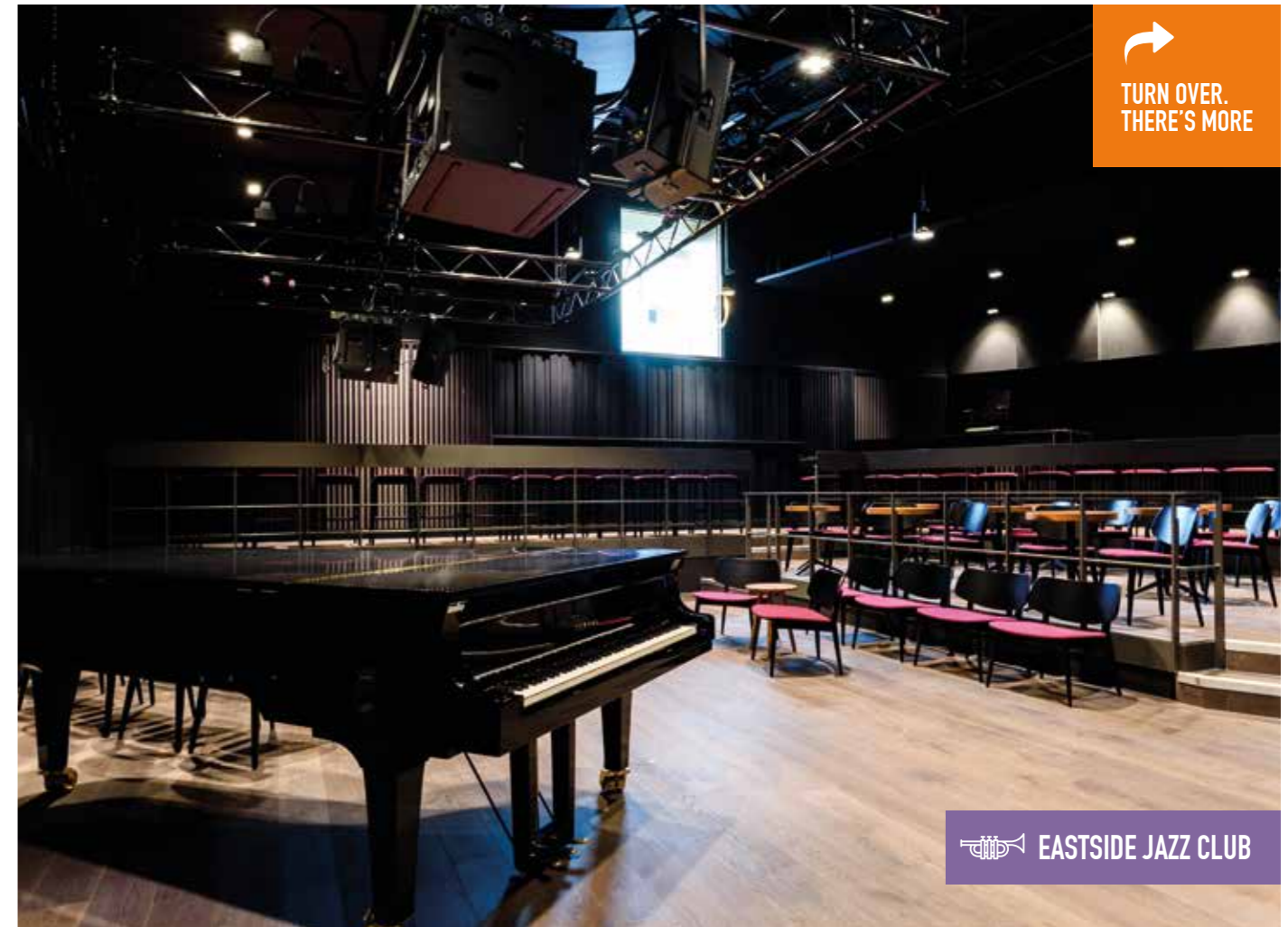
A huge, open and versatile exhibition and production space at the entrance to The Parkside Building. The Shell houses a number of exhibitions, featuring work by our students, throughout the year.

**WHEN YOU CHOOSE TO STUDY AT BIRMINGHAM CITY UNIVERSITY, YOU CAN BE CONFIDENT THAT YOUR LEARNING NEEDS ARE OUR TOP PRIORITY.**

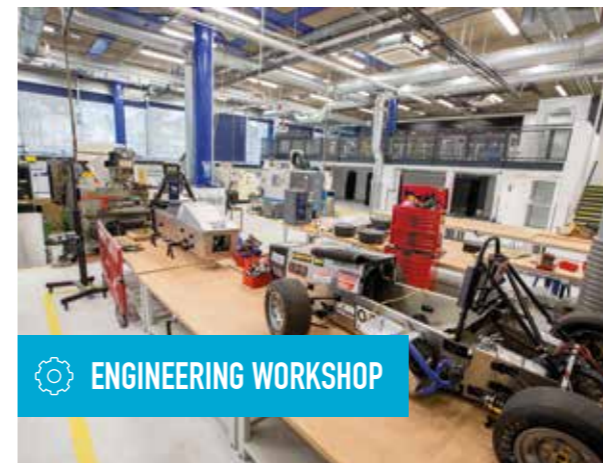
In addition to high-quality facilities specific to your course, you will find a range of general learning resources which provide you with all the help you need to succeed.



TURN OVER.  
THERE'S MORE



 EASTSIDE JAZZ CLUB



 ENGINEERING WORKSHOP



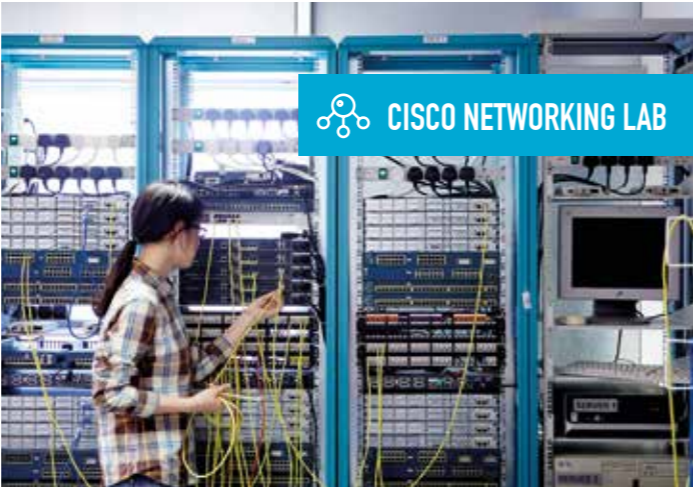
 TEXTILE STUDIOS



 TV STUDIOS



 CRIME SCENE ROOM



 CISCO NETWORKING LAB



 **IT RESOURCES**

You will have access to your own email account as soon as you accept an unconditional offer from us, free secure file storage and free University wi-fi, as well as the use of open-access computers within every library and faculty.

Our IT Help Desk is on hand to resolve any technical issues, while our Follow-Me printing system lets you print from any printer on campus.

[www.bcu.ac.uk/it](http://www.bcu.ac.uk/it)



 **LIBRARY AND LEARNING RESOURCES**

You will have access to a wide range of online and many print resources with 24/7 support. These have been selected in partnership with your lecturers, so are quality assured and relevant to your course.

You can access library inductions, tailored tutorials, workshops and online tools. These will help you find, assess and use information resources to improve your grades and develop your employability skills.

If you need help in person or online, our expert staff and back-up services are there to help you get the best from the time you invest in developing your information-seeking skills.

We have been accredited to the Customer Service Excellence standard; we focus on delivery, timeliness, information, professionalism and staff attitude. We value collaborative working, and include the student voice alongside our expertise to improve your services.

[www.bcu.ac.uk/library](http://www.bcu.ac.uk/library)



 PRINT STUDIO



 LAW COURTS



 MEDICAL WARDS



 BIOMEDICAL SCIENCE LAB



# A PLACE TO CALL HOME

## WANT TO SEE MORE?

Visit [bcu.ac.uk/halls](http://bcu.ac.uk/halls) to watch video tours of our accommodation.

With seven halls of residence within the city, Birmingham City University can guarantee all International students get a room in our safe and secure university accommodation, which is a great way to make new friends as you settle into the city.

Leaving home for university is one of the biggest moves you will ever make. And with the excitement, freedom and independence of living in halls, it is the perfect way to meet new friends.

Returning students in their second year and above may prefer to live in private rented accommodation in the city, and our Students' Union's own lettings agency, Birmingham City Student Homes, is able to provide access to a range of safe and secure properties in the city.

[www.bcu.ac.uk/accommodation](http://www.bcu.ac.uk/accommodation)



Student bedroom, University Locks



Student flat, University Locks

## AT A GLANCE



Over 2,000 rooms available



CCTV coverage and security patrols



Shared kitchen, living areas, laundry facilities and common rooms



Easily accessible – close to public transport links



Access to free wi-fi



A safe and secure home

Location		Price per week:
University Locks	City Centre Campus	From £140
Jennens Court	City Centre Campus	From £132
The Heights	City Centre Campus	From £135
Belgrave View	City South Campus	From £118.50
Lakeside	City Centre Campus	From £136
Stanford House	City Centre Campus	From £136
Bagot Street	City Centre Campus	From £143.50

# FIRST-CLASS SUPPORT

Student Success Advisors (SSAs) are recent graduates who are employed by the University to help make sure courses run smoothly, issues are dealt with quickly and you can manage any issues that may be affecting your studies.

## LEVEL UP

A comprehensive and engaging pre-arrival mentoring programme, designed to help you get used to studying in higher education.

## STUDENT BUDDY

Current students helping new students by sharing their experience of university life.

## INTER-YEAR TRANSITIONAL SUPPORT

Providing support to students throughout the student journey, including advice on placements, academic success and postgraduate study.

**ACCESSING ADVICE HAS NEVER BEEN EASIER. THROUGHOUT YOUR STUDENT CAREER, YOU WILL HAVE ACCESS TO OUR FULL RANGE OF SUPPORT SERVICES, INCLUDING CAREERS ADVICE, MENTORING, ADVICE ON FINANCE AND ACADEMIC MATTERS, PROFESSIONAL DEVELOPMENT EVENTS AND MORE.**

[www.bcu.ac.uk/student-affairs](http://www.bcu.ac.uk/student-affairs)



## CAREERS AND EMPLOYMENT

Our team of experienced careers consultants are available to help you refine your skills and identify potential career opportunities. Our dedicated Employment Advisers offer a unique, personalised service to make your transition from education into employment as easy as possible.

We work with local, regional, national and international employers to ensure our students and graduates have access to the best opportunities. These are accessed via our dedicated Online Jobs Board.

We also offer a suite of face-to-face and e-mentoring initiatives, connecting students and graduates to employers in the region and beyond.

### Support includes:

- Work, study and social advice
- Commercial awareness, employability skills and real-world preparation
- CV, application form and interview techniques.

[www.bcu.ac.uk/careers](http://www.bcu.ac.uk/careers)

To make sure it is all easy to access, we have introduced a one-stop confidential student enquiry service, Ask. If you have a question about health and wellbeing, visas, your student record, the Students' Union, childcare, accommodation, IT or anything else, we are here to help.

### Your studies

- Admissions
- Academic calendar
- Student ID cards and student status letters
- Complaints and appeals
- Erasmus – study abroad programme
- Careers and job prospects (see left)
- Graduation.

### Money matters

- Scholarships
- Personal finances
- Student Loans Company queries
- Payments.

### Support services

- Healthcare
- Disability and dyslexia support
- Counselling, mental health and wellbeing
- Childcare
- Visas and immigration.

### Students' Union

- Support
- Representation
- Employability skills and part-time work
- Help with finding accommodation.



# YOU

A personalised service from our career consultants to help you find the job you want.

# OUR RESEARCH

RESEARCH IS A CORE COMPONENT OF WHAT WE DO AT BIRMINGHAM CITY UNIVERSITY. OUR RESEARCHERS ARE COMMITTED TO DISCOVERING NEW KNOWLEDGE AND DELIVERING REAL BENEFIT TO CULTURE, INDUSTRY, SOCIETY AND THE ENVIRONMENT.



Our dynamic research community works across disciplines and with external companies to address local, national and global challenges. Our Research Excellence Framework (REF) 2014 results demonstrate the public benefit of our research to society and the economy, with 90% deemed to have either 'outstanding' or 'very considerable' impact.

## Our research areas

- Architecture, Built Environment and Planning
- Art and Design
- Business and Management
- Computing
- Education
- Engineering
- English
- Health
- Law
- Media and Cultural Studies
- Music and Performance
- Social Sciences

If you'd like to find out more, please visit [www.bcu.ac.uk/research](http://www.bcu.ac.uk/research).

## RESEARCH WITH IMPACT

### 'Traffic light' till receipts

Researchers in our Faculty of Health, Education and Life Sciences have devised a 'traffic light' system which uses till receipts to display the total data for calories, sugar, fat and salt in a person's entire shop, with a green, amber or red verdict on the basket as a whole, as opposed to individual items.

### Visualising medical parts

Researchers at our Digital Media Technology Lab are developing a system which allows medical practitioners to view and interact with virtual replicas of patients' organs, bones or body parts. The system could also be used to demonstrate procedures or the effects of lifestyle choices such as healthy eating or smoking to patients.

Q  
90%

of our research was judged to have delivered 'outstanding' or 'very considerable' external impact (REF 2014).

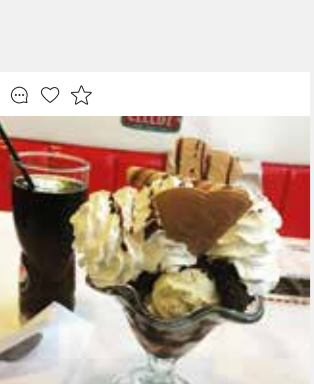
We're researching the use of virtual reality to help medical practitioners with their work.

# SOCIAL AT HEART

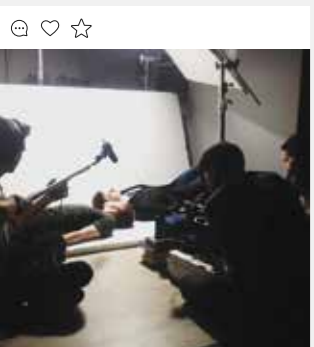
STUDYING HERE MEANS  
LEARNING AND LIVING AT THE  
HEART OF A VIBRANT, DIVERSE  
CITY OF ONE MILLION PEOPLE.  
SO WHOEVER YOU ARE, YOU  
CAN BE YOURSELF HERE.

## IN THIS SECTION

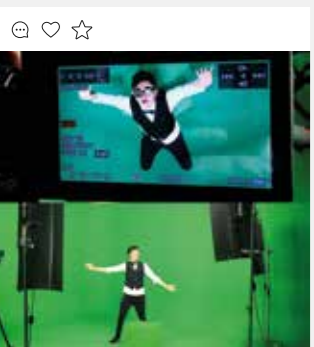
- Shot by BCU
- The city is your campus
- City life
- Going abroad



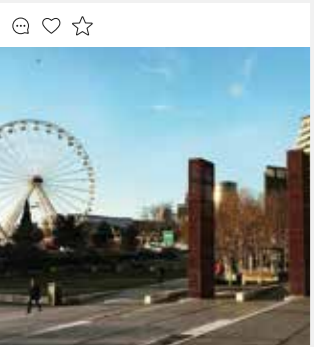
**phillipmccahill** look where we ended up after the Open Day



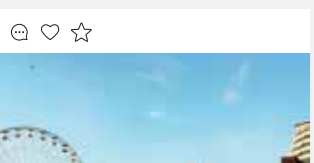
**steadispider** When books make a better pair of sticks for a profile.



**carrier\_cosplay** Steampunk time stopper! Good shoot on the green screen getting some awesome shots!



**mybcu** The big wheel looks so good on campus we wish it could stay all year!




**mybcu** The big wheel looks so good on campus we wish it could stay all year!

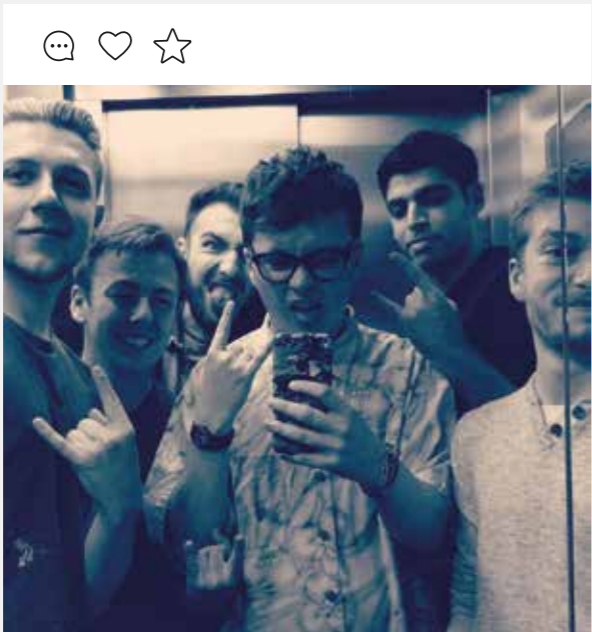


**mybcu** Digbeth, home to some of Birmingham's best street art.

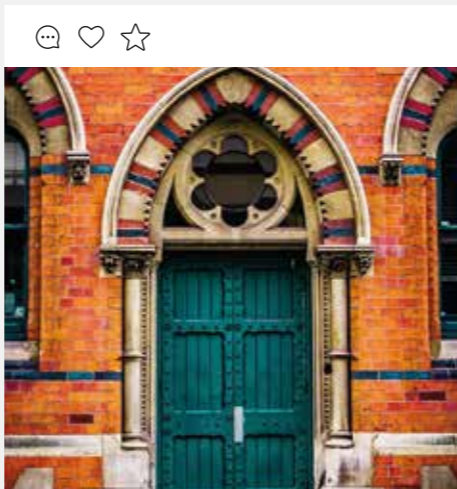
# SHOT BY BCU

Want a taste of what student life in the city is really like? Take a look at our Instagram profile to see what's going on around our campuses and the city.

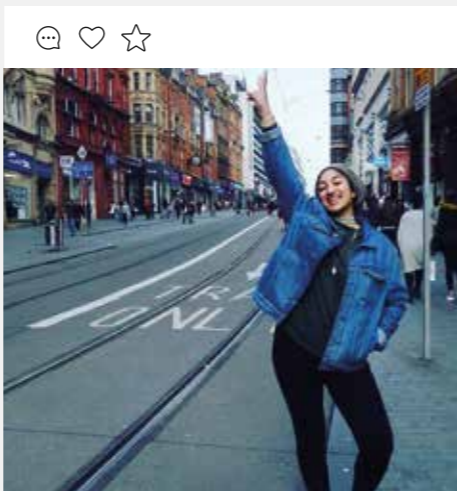
 [instagram/mybcu](https://www.instagram.com/mybcu)



**joekapia** we came, we saw, we killed the crowd .



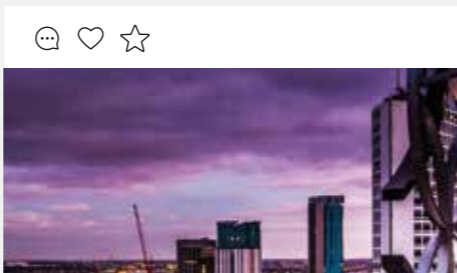
**elinady1**



**mybcu** We love the city!!! If you're visiting for our Open Day we recommend having a mooch round before you go home!



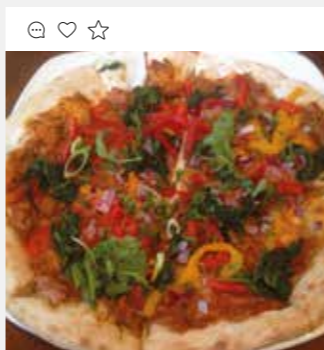
**bcusu\_extreme\_sports\_team** Squad goals



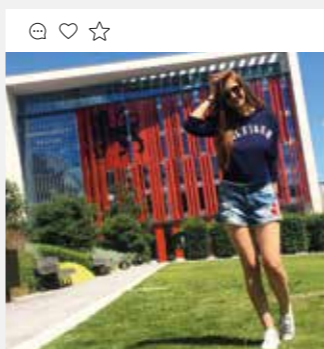
**mybcu** oh Birmingham, you look picture perfect and so christmassy today!



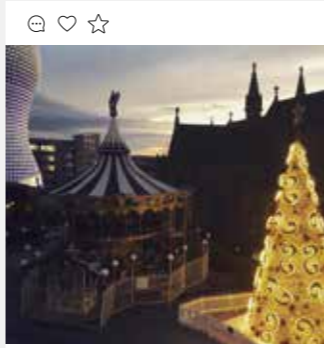
**bcuactive** Brilliant scenes from today's futsal tournament held by BCU!!



**Karmic\_herbalist** The uni SU bar has VEGAN PIZZA! it's curried jackfruit



**camellia.nk** And sometimes we go back to the beginning to see everything in a new way.



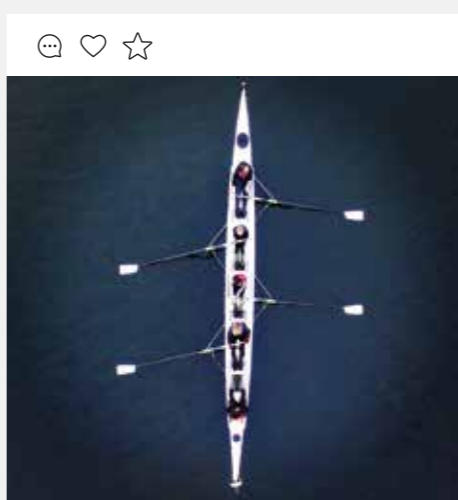
**mybcu** oh Birmingham, you look picture perfect and so christmassy today!



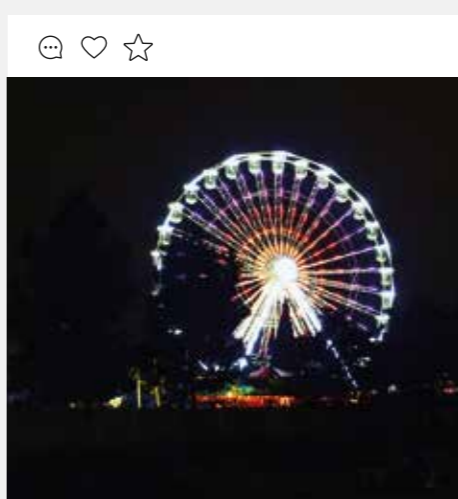
**mybcu** oh Birmingham, you look picture perfect and so christmassy today!



**bcu\_global** Snowday at BCU.



**bcurowing** BCU Rowing members have been training hard ready for summer racing!



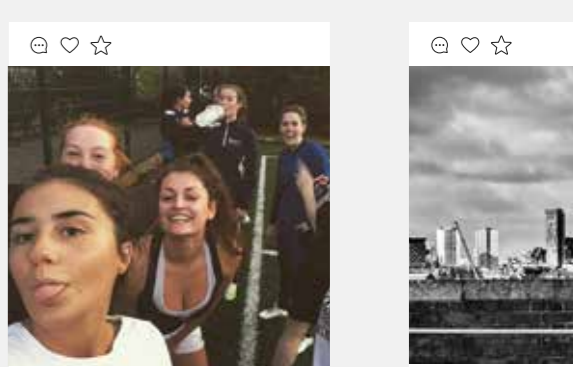
**carrier\_cosplay** It's Christmas season in Birmingham! German markets here and so is the ice rink and ferris wheel! another year down!



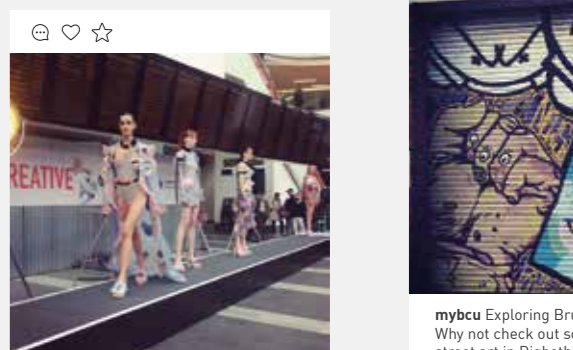
**mybcu** oh Birmingham, you look picture perfect and so christmassy today!



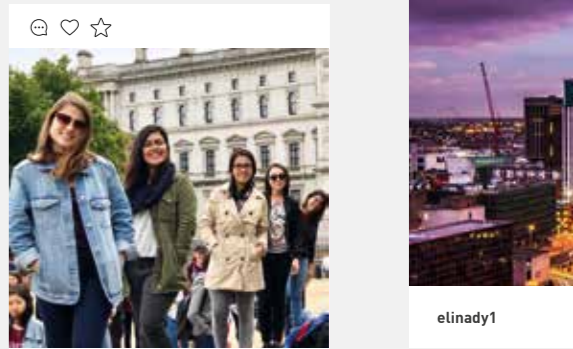
**biryanimuncher** Hide and seek



**bcuactive** Want to play a sport? Want to make some friends for life? Head down to one of our BCU Active sessions and find your feet!



**mybcu** Our pop up fashion show is underway! Not made it to this one? It starts all over again at 2, 3 and 4pm!



**dannycervantes** Keep calm and think of London



**elinady1**



**mybcu** Exploring Bru Why not check out so street art in Digbeth?



**elinady1**



**PANCAKES AT CHERRY REDS**

Set yourself up for the day with a tasty breakfast from one of Birmingham's popular cafés.



**PINBALL AT TILT**

Birmingham has plenty of quirky bars including Tilt, where you can enjoy a game of pinball with your craft beer.



**SHOPPING AT GREAT WESTERN ARCADE**

Birmingham's arcades offer the chance to shelter from the elements while enjoying some interesting, independent shops.



# CITY LIFE

**WE ASKED THREE GROUPS OF BCU STUDENTS TO SHARE SOME OF THEIR FAVOURITE PLACES IN BIRMINGHAM**

**VINTAGE SHOPPING AT COW**

Fancy a bit of shopping? As well as big-name stores in the Bullring, we have plenty of quirky independent stores like vintage clothes outlet Cow.



**STREET FOOD AT DIGBETH DINING CLUB**

Head down to Digbeth on a Friday or Saturday for an ever-changing street food selection at Digbeth Dining Club.

**STREET ART IN DIGBETH**

Digbeth is well-known as Birmingham's cultural hub, with art studios, creative businesses and street art aplenty.





**HOT CHOCOLATE AT BOND**

There are plenty of places to warm up with a hot drink such as Bond, a café complete with canalside seating.







**DRINKS AND JENGA AT RUIN**

If you like to 'balance' games with a drink, the Ruin pub - one of many characterful taverns in the Digbeth area - has both!





**BURGERS AT ORIGINAL PATTY MEN**

Having started out at Digbeth Dining Club, the OPM guys now have their own permanent outlet with some of the best burgers in town.



MUSIC

There's a host of great live music destinations to be found across the city - from sticky-floored pubs and intimate jazz bars to the famous O2 Academy and Jools Holland's Jam House.



SPORTS

Whether you're interested in sport as a participant or a spectator, Birmingham has plenty to offer. The city is set to host the Commonwealth Games in 2022, underlining its reputation as a destination for major sporting events. There are three big-name football clubs nearby - Aston Villa, Birmingham City and West Bromwich Albion - and international cricket takes place at Edgbaston.



CULTURE

With a world-class symphony orchestra, royal ballet company and theatres, Birmingham has some of the finest contemporary arts venues in the country, while one of the city's most exciting facilities is the state-of-the-art, £188 million Library of Birmingham.



BUSINESS

With over 42,000 companies, Birmingham is not just a good place to study and explore; it is also a great location to start your career, gaining real-world skills and industry contacts. Major employers are investing in the city, including world-renowned businesses such as Jaguar Land Rover, HSBC and Deutsche Bank.

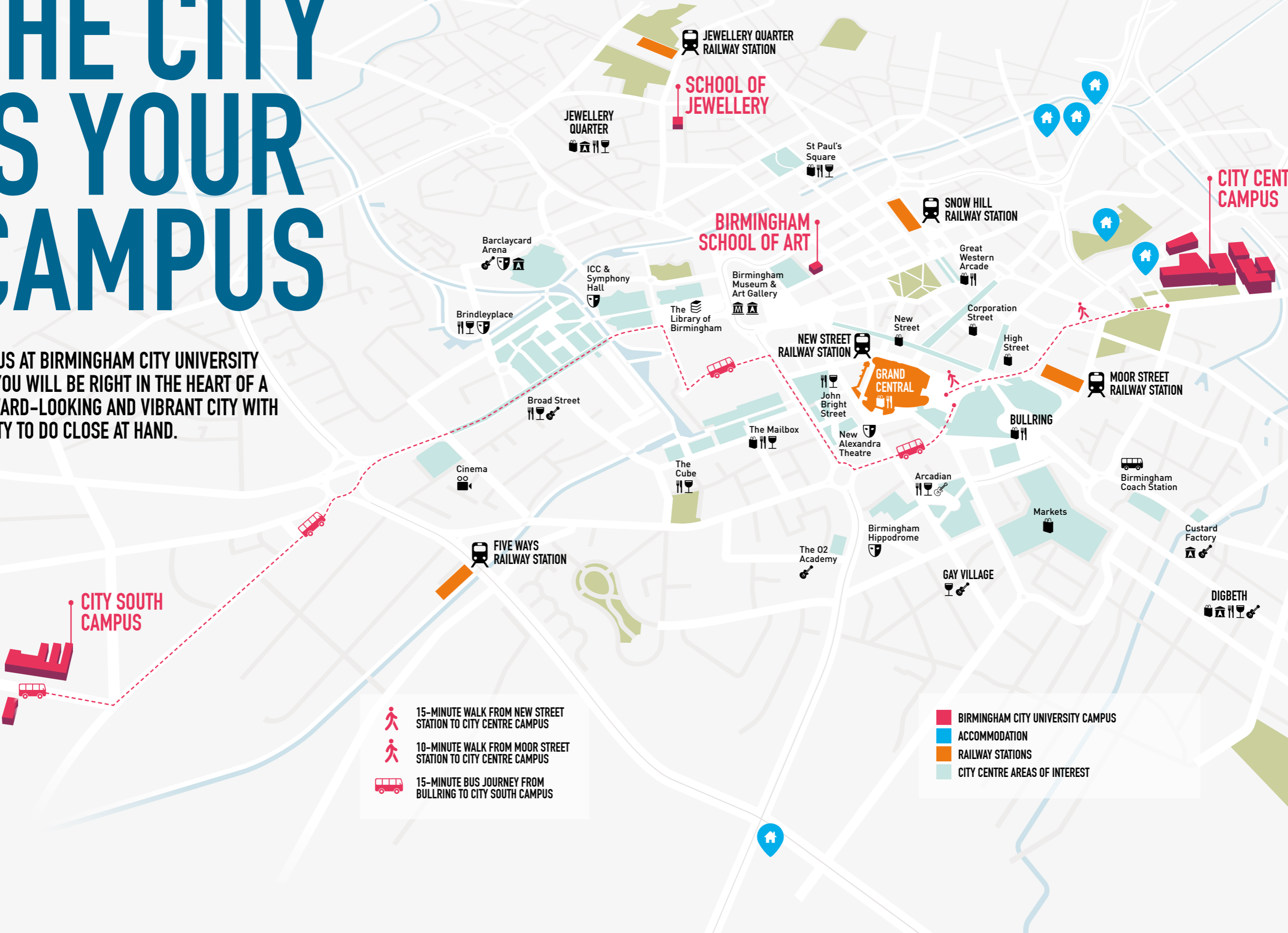


RELAXING

If you want to get out and about, the city has over 8,000 acres of park and open space, making it one of the UK's greenest cities.

# THE CITY IS YOUR CAMPUS

JOIN US AT BIRMINGHAM CITY UNIVERSITY AND YOU WILL BE RIGHT IN THE HEART OF A FORWARD-LOOKING AND VIBRANT CITY WITH PLENTY TO DO CLOSE AT HAND.





# GO ABROAD

**MOVING COUNTRIES TO STUDY IN BIRMINGHAM DOESN'T HAVE TO END THERE.  
YOU MAY HAVE THE OPPORTUNITY TO GAIN MORE INTERNATIONAL  
EXPERIENCE BY STUDYING ABROAD FOR A SEMESTER OR TWO.**

Birmingham City University offers opportunities for full-time undergraduate and postgraduate students to study part of their degree overseas.



Decisions about how long you can study abroad for, where you can go, and how your international experience contributes to your degree are determined by your academic department and University regulations specific to your degree.

There are many benefits to studying overseas including the possibility of higher average earnings, graduating with a higher degree and feeling more employable, but you'll also earn credits towards your degree.

#### Want to go further than the EU?

Birmingham City University offers students another opportunity to gain international experience by studying in countries much further afield such as Australia, the USA, China, Taiwan and South Korea. You won't have to pay tuition fees to study at an overseas university where we have a partnership agreement in place.

Find out more:  
[www.bcu.ac.uk/international/go-abroad](http://www.bcu.ac.uk/international/go-abroad)

## ERASMUS+

Erasmus+ is the EU programme for education, training, youth and sport. One of its aims is to boost the skills and employability of university students by taking your studies overseas for between three and 12 months. It's your chance to continue your course in a new environment and experience a different culture while you're at it.

You can take your pick from any one of 32 countries in Europe, with whom your university has an agreement and most students receive a grant to help contribute to the cost of living. So whether you fancy brushing up your languages, meeting up with new people or just immersing yourself in a completely new culture, Erasmus+ will have something to suit you.



## PARTICIPATE IN THE SUMMER SCHOOL

Birmingham City University's International Summer School offers you the perfect opportunity to spend three weeks sampling UK university life, as well as giving you the chance to enhance your academic skills and visit some of the UK's historic towns and cities.

[www.bcu.ac.uk/international/summer-school](http://www.bcu.ac.uk/international/summer-school)

# ARTS, DESIGN AND MEDIA

OUR FACULTY OF ARTS, DESIGN AND MEDIA INCLUDES A SPECIALIST CONSERVATOIRE OF MUSIC AND ACTING, A LEADING PROVIDER OF MEDIA TRAINING, AND EUROPE'S BIGGEST JEWELLERY SCHOOL.

The Faculty also incorporates Birmingham Institute of Art and Design, an internationally renowned centre for creative education with a history dating back to 1843. It is England's largest provider of creative courses outside of London (HESA 2015/16).

Our links with industry have included Rolex, Swatch, Saatchi and Saatchi, Goldsmith, the BBC, The Royal Shakespeare Company, the City of Birmingham Symphony Orchestra, The Brits, Axis Design Architects Ltd, Sony Computer Entertainment Europe, SEGA and Rockstar North.

**Our subject areas include:**

- Acting and Theatre
- Architecture and Design
- Art and Design
- English
- Fashion and Textiles
- Jewellery and Silversmithing
- Media and Multimedia Technology
- Music
- Visual Communication.

**Facilities include:**

- Print, textiles, wood, ceramics and glass workshops
- Photography studios and darkrooms
- Digital print and pattern-making facilities
- Four TV studios
- Green screen MILO studio

- Radio studio and editing suites
- Light and airy art studios
- Gallery and installation space
- Fine art library
- Exhibition space and specialist library
- Digi.lab - a digital lab for prototyping and 3D printing
- Jewellery, silversmithing and computer-aided design equipment
- 10 specialist acting studios complete with temperature regulation and sprung floors
- Five public performance venues – including a 500 seat Concert Hall and Jazz Club, situated in our new £57 million Royal Birmingham Conservatoire building
- An experimental black box performance space
- Seven industry standard recording studios and a mastering suite.





## ARTS, DESIGN AND MEDIA SCHOOLS

### Birmingham School of Architecture and Design

Over 100 years of training Royal Institute of British Architects (RIBA) accredited architects.

### School of Visual Communication

Our students have won prestigious national and international competitions, including the Royal Television Awards, Macmillan Children's Book Awards and Direct Marketing Awards.

### School of Fashion and Textiles

Selected graduating BA (Hons) Fashion Design students showcase their designs at Graduate Fashion Week, London, in June each year.

### Birmingham School of Media

Strong links with a range of potential employers who offer placements and expertise - from major radio and TV broadcasters to PR agencies and games developers.

### New Technology Institute

Providing training in video game design and development through courses backed by the UK video game industry. Undergraduate degrees here can be completed via a two-year fast track route.

### Royal Birmingham Conservatoire

Multidisciplinary institution ranked in the top five for both music and acting in the Guardian University Guide 2018. New £57 million state-of-the-art music building opened in 2017.

### School of English

Our Institute of Creative and Critical Writing gives students access to industry expertise and masterclasses from writers, publishers and agents.

### School of Jewellery

The largest school of jewellery in Europe. Students work with high-profile companies such as Rolex, Georg Jensen (Denmark) and Weston Beamor (Birmingham).

### Birmingham School of Art

Birmingham School of Art's heritage stretches back over 130 years.

ARTS, DESIGN AND MEDIA COURSES

Undergraduate

BA (Hons) Acting
BA (Hons) Applied Performance (Community and Education)
BA (Hons) Architecture
BA (Hons) Art and Design
BA (Hons) Costume Design and Practice
BA (Hons) Design for Performance
BA (Hons) Digital Marketing
BA (Hons) English
BA (Hons) English and Creative Writing
BA (Hons) English and Drama
BA (Hons) English and Journalism
BA (Hons) English Language and Literature
BA (Hons) English Literature
BA (Hons) Fashion Branding and Communication
BA (Hons) Fashion Business and Promotion
BA (Hons) Fashion Design
BA (Hons) Film and Animation
BA (Hons) Fine Art
HND Fine Art
BA (Hons) Product and Furniture Design
BA (Hons) Garment Technology
BSc (Hons) Gemmology and Jewellery Studies
BA (Hons) Graphic Communication
BA (Hons) Horology
BA (Hons) Illustration
BA (Hons) Interior Architecture and Design
BA (Hons) International Jewellery Business
BMus (Hons) Jazz

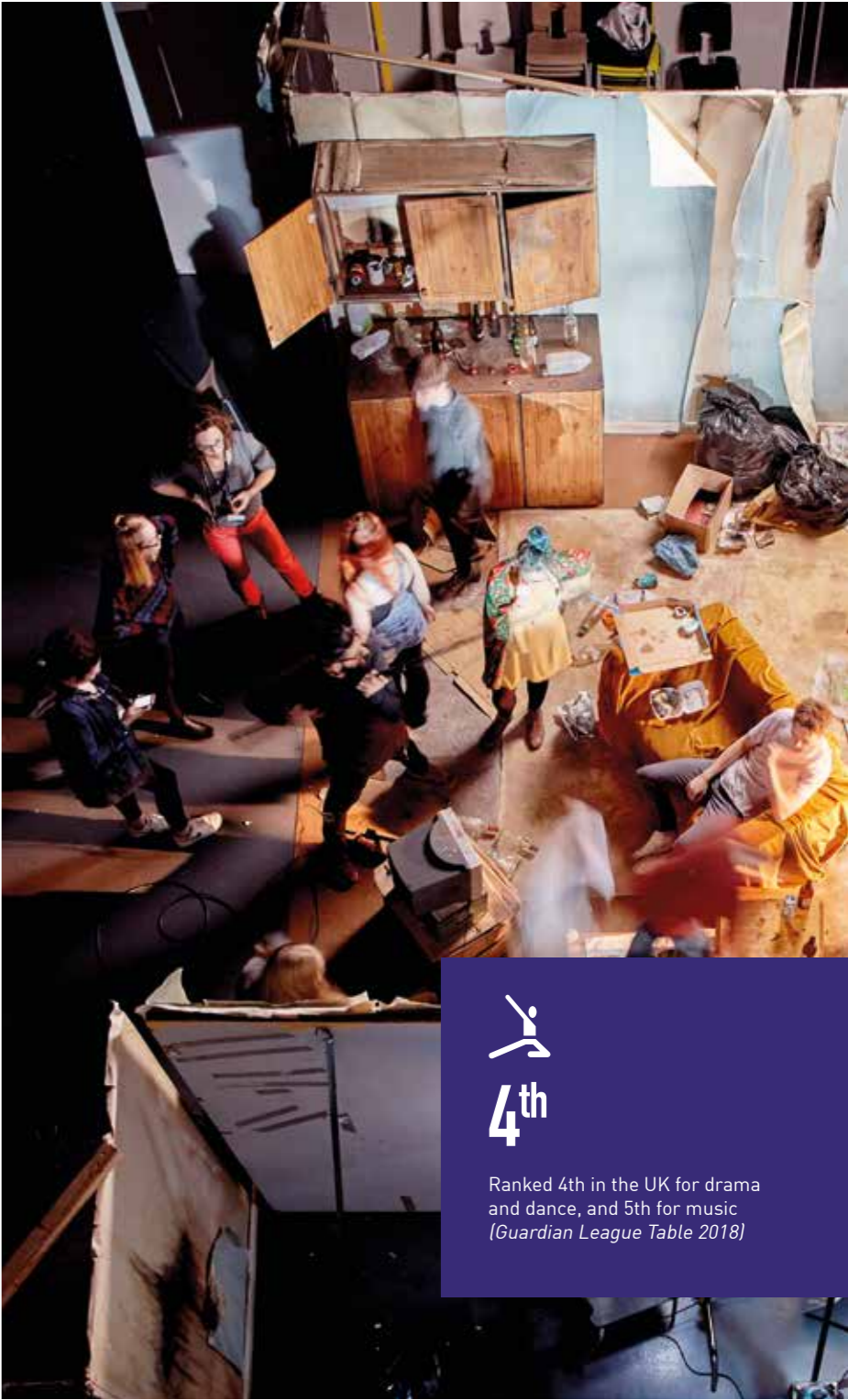
BA (Hons) Jewellery and Objects
HND Jewellery and Silversmithing
BA (Hons) Jewellery and Silversmithing - Design for Industry
BA (Hons) Landscape Architecture
BA (Hons) Media and Communication
BA (Hons) Media and Communication (Music Industries)
BA (Hons) Media and Communication (Public Relations)
BA (Hons) Media and Communication (Radio)
BA (Hons) Media and Communication (Television)
BMus (Hons) Music
BSc (Hons) Music Technology
BA (Hons) Photography
BA (Hons) Product and Furniture Design
BA (Hons) Stage Management
BA (Hons) Textile Design: Cross-Disciplinary Practice
BA (Hons) Video Game Design and Production
BSc (Hons) Video Game Development
BA (Hons) Video Game Digital Art

Postgraduate

MA Acting
MArch Architecture
PgDip Architectural Practice
MA Art and Design: Interdisciplinary Practices
MA Arts and Education Practices
MA Arts and Project Management

MMus Composition
MMus Conducting (Choral or Orchestral)
MA Contemporary Arts China
MA Conservation of the Historic Environment
MA Cosmetics Branding and Promotion
MA Creative Writing
MA Design and Visualisation
MA Design Management
MA English Linguistics PT DL
MA Events, Festivals and Exhibition Management
MA Fashion Design
MA Fashion Management
MA Fashion Promotion
MA Fashion Styling
MA Film Distribution and Marketing
MA Fine Art
MA Future Media
MSc Future Media
MA Garment Technology
MA Global Media Management
MA Innovation and Leadership in Museum Practice
MMus Instrumental Performance
MA Interior Architecture and Design
MMus Jazz
MA Jewellery and Related Products
GradCert Jewellery and Related Products
MA Landscape Architecture
MA Luxury Brand Management

MA Luxury Jewellery Management
MA Media and Cultural Study
MA Media Production
MA Multi-platform and Mobile Journalism
MA Musicology
MMus Music Technology
MMus Orchestral Performance (Strings)
AdvPgDip Professional Performance
MA Professional Voice Practice
MA Public Relations
MA Textile and Surface Design
MSc Video Game Development
MSc Video Game Enterprise, Production and Design
MA Visual Communication
MMus Vocal Performance



# BUSINESS, LAW AND SOCIAL SCIENCES

THE FACULTY OF BUSINESS, LAW AND SOCIAL SCIENCES IS A GLOBALLY ORIENTED FACULTY, DRAWING ON THEORIES AND PRACTICE FROM AROUND THE GLOBE TO INFORM OUR LEARNING ENVIRONMENT.

Birmingham City Business School is a leading professionally oriented, international business school focused on connecting you with every aspect of the world of business and innovation. While we have a unique relationship with the extraordinary city we're rooted in, renowned for its industry and commerce, our courses are designed to meet the needs of businesses across the globe.

Birmingham City School of Law has been at the forefront of innovative law teaching for more than 40 years, specialising in social justice and access to justice, with leading academics who are experts in human rights and the death penalty, as well as civil and social issues. Our globally oriented, innovative law degrees are tailor-made for law professionals who want to make an impact on the world.

At Birmingham City School of Social Sciences our mission is to make sense of the world. Our

students and academics work together across the disciplines of Criminology, Psychology and Sociology to develop insights into society. We also apply our research in real world settings on an international scale, working with communities, prisons, hospitals, schools and the police to understand, and influence, social change.

**Accreditations include:**

- Association of Chartered Certified Accountants (ACCA)
- Chartered Institute of Management Accountants (CIMA)
- Chartered Institute of Personnel and Development (CIPD)
- Chartered Management Institute (CMI)
- Chartered Institute of Marketing (CIM)
- Chartered Institute of Internal Auditors (IIA)
- The British Psychological Society (BPS)
- Solicitors Regulation Authority and Bar Standards Board.

**Our subject areas include:**

- Accountancy and Finance
- Advertising, Marketing and PR
- Business and Management
- Criminology
- Economics
- Law
- Psychology
- Social Sciences.

**Our facilities include:**

- Library with access to 62 million print and online resources
- Dedicated IT and student services support
- Simulated courtrooms
- Students' Union
- Psychology laboratories
- Internal marketing agency
- City Trading Room.



BUSINESS COURSES

Undergraduate

BSc (Hons) Accountancy
BSc (Hons) Accounting and Finance
MAcc Accounting and Finance
BA (Hons) Business
BA (Hons) Business (Marketing)
BA (Hons) Business (Professional Practice)
BSc (Hons) Business Accounting
BA (Hons) Business Administration (Top Up)
BA (Hons) Business Economics
BSc (Hons) Business Finance
MFin Business Finance
BA (Hons) Business Management
BA (Hons) Business Management (Consultancy)
BA (Hons) Business Management (Enterprise)
BA (Hons) Business Management (Professional Practice)
BA (Hons) Business Management (Supply Chain Management)
BA (Hons) Economics
BA (Hons) Event, Venue and Experience Management
BSc (Hons) Finance and Investment
MFin Finance and Investment
BA (Hons) Financial Economics
BA (Hons) Global Sport Management*
BA (Hons) Human Resource Management
BA (Hons) International Business (Top Up)
BA (Hons) International Finance (Top-Up)
BA (Hons) International Marketing (Top Up)
BA (Hons) Management and Leadership (Top Up)

BA (Hons) Marketing
BA (Hons) Marketing (Advertising and PR)
BA (Hons) Marketing (Consumer Psychology)
BA (Hons) Marketing (Digital)
BA (Hons) Marketing (Professional Practice)
BA (Hons) Marketing (Retail)

Postgraduate

ACCA
MSc Accounting and Finance
MSc Accounting and Finance (Master’s Stage)
MSc Accounting and Financial Management
Doctorate in Business Administration
Executive MBA
MSc Finance and Investment
MSc Insurance and Risk Management
MSc Internal Audit Management and Consultancy
International MBA
MSc International HRM
MSc Management and Entrepreneurship
MSc Management and Finance
MSc Management and International Business
MSc Management and Marketing
Online MBA
MSc Organisation Risk Management

LAW COURSES

Undergraduate

LLB (Hons) Law
LLB (Hons) Law with American Legal Studies
LLB (Hons) Law with Business
LLB (Hons) Law with Criminology

Postgraduate

LLM International Law
LLM Law (International Business Law)
LLM Law (International Human Rights)
LLM Legal Practice
LPC Legal Practice Course
LLM Professional Law
Postgraduate Diploma in Law

SOCIAL SCIENCES COURSES

Undergraduate

BA (Hons) Black Studies
BA (Hons) Criminology
BA (Hons) Criminology and Security Studies
BA (Hons) Criminology, Policing and Investigation
BSc (Hons) Policing*
BSc (Hons) Psychology
BSc (Hons) Psychology with Business
BSc (Hons) Psychology with Criminology
BSc (Hons) Psychology with Marketing
BSc (Hons) Psychology with Sociology
BA (Hons) Sociology
BA (Hons) Sociology and Criminology

Postgraduate

MA Criminology
MSc Forensic Psychology
MSc Health Psychology
MSc Psychology
MA Security Studies

\*subject to approval



# COMPUTING, ENGINEERING AND THE BUILT ENVIRONMENT

THE FACULTY OF COMPUTING, ENGINEERING AND THE BUILT ENVIRONMENT COMPRISES TWO SCHOOLS WITH A SHARED VISION TO CREATE A POWERFUL CENTRE OF TECHNOLOGICAL EXCELLENCE AND INNOVATION, AND TO EQUIP YOU WITH THE SKILLS YOU NEED TO SUCCEED IN THE WORKPLACE AND CONTRIBUTE TO THE WIDER SOCIETY.

We have excellent resources including state-of-the-art laboratories and engineering workshops, world-class film and television studios, and the latest computing and digital technologies, all located in a spectacular environment provided by the Millennium Point building.

Our courses are designed to develop highly employable graduates and we have worked closely with our strong employer network to ensure our courses meet their demands and expectations. We work with some of the world's

foremost employers, including the BBC, Microsoft, Cisco, Jaguar Land Rover and Wilmott Dixon.

**Accreditations include:**

- The Chartered Institute of Building (CIOB)
- Royal Institution of Chartered Surveyors (RICS)
- The Institution of Engineering and Technology (IET)
- The Institute of Mechanical Engineering (IMechE).

**Our subject areas include:**

- Built Environment
- Computing
- Digital Technology
- Engineering.

**Our facilities include:**

- Cisco networking labs
- Industry-standard computer forensics lab
- Specialist games lab
- Hydraulics lab
- Computer Aided Design lab
- Flexible project space with makers' area.



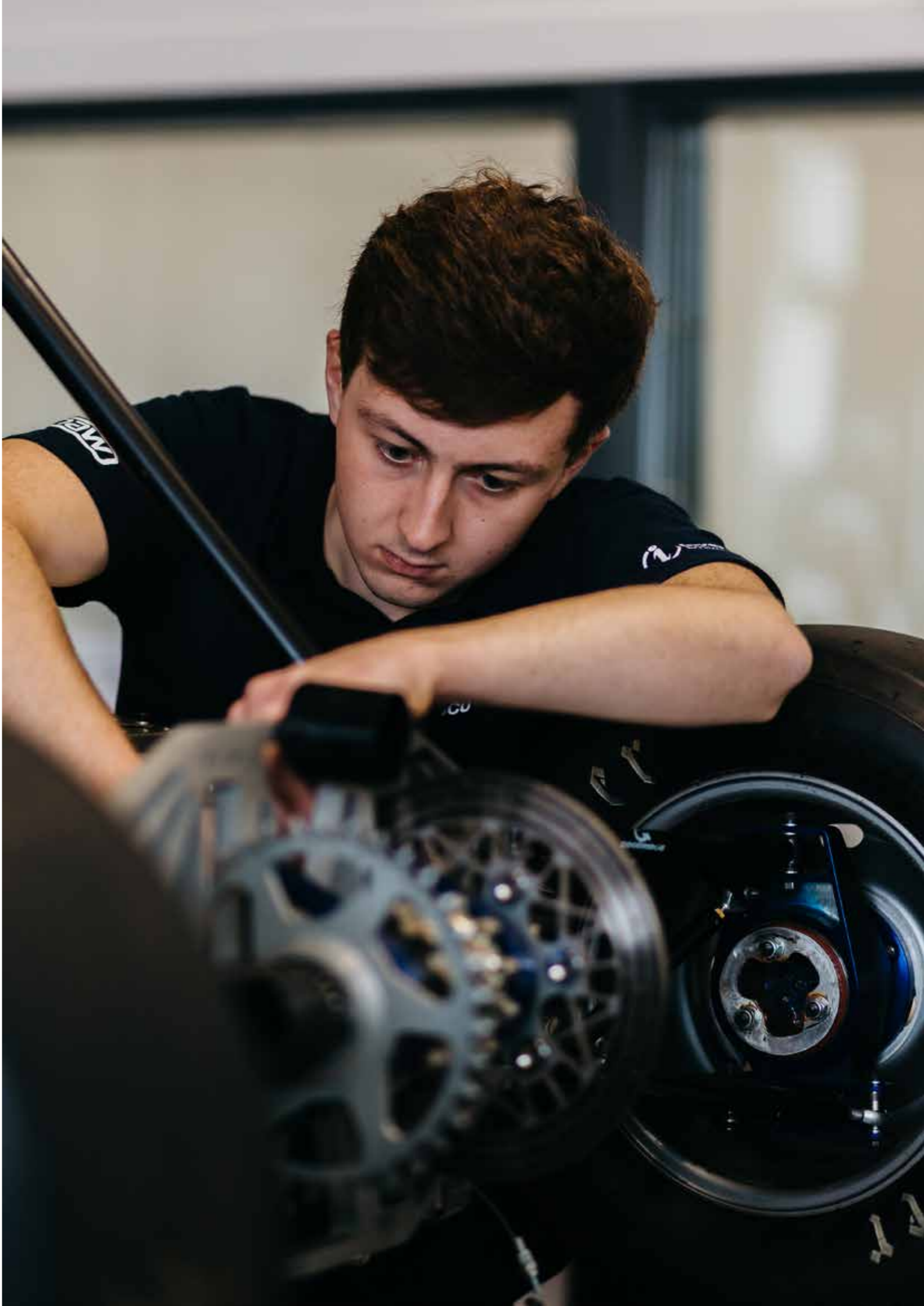
COMPUTING, ENGINEERING AND BUILT ENVIRONMENT COURSES

Undergraduate

BSc (Hons) Architectural Technology
BEng (Hons) Automotive Engineering
BSc (Hons) Building Surveying
BSc (Hons) Business Information Technology
BEng/MEng (Hons) Civil Engineering
BSc (Hons) / MSci Computer and Data Science
BSc (Hons) / MSci Computer Forensics
BSc (Hons) / MSci Computer Games Technology
BSc (Hons) / MSci Computer Networks
BSc (Hons) / MSci Computer Networks and Security
BSc (Hons) / MSci Computer Science
BSc (Hons) / MSci Computing and Information Technology
BSc (Hons) Construction Management
BSc (Hons) Digital Media Computing
BEng/MEng (Hons) Electronic Engineering
BSc (Hons) Film Production Technology
BSc (Hons) Film Technology and Visual Effects
BEng/MEng (Hons) Manufacturing Engineering
BEng/MEng (Hons) Mechanical Engineering
BSc (Hons) Music Technology
BSc (Hons) / MPlan Property, Development and Planning
BSc (Hons) Quantity Surveying
BSc (Hons) Real Estate
BSc (Hons) Sound Engineering and Production

Postgraduate

MSc Advanced Computer Science
MSc Automotive Engineering
MSc Big Data Analytics
MSc Broadcast Engineering
MSc Building Surveying with Facilities Management
MSc Construction Project Management
MSc Cyber Security
MSc Data Networks and Security
MSc Enterprise Systems Management
MSc Environmental Surveying
MSc International Logistics and Supply Chain Management (Distance Learning)
MSc International Project Management (Distance Learning)
MSc Logistics and Supply Chain Management
MSc Mechanical Engineering
MA Planning Built Environments
MSc Project Management
MSc Quantity Surveying
MSc Real Estate Management



# HEALTH, EDUCATION AND LIFE SCIENCES

THE FACULTY OF HEALTH, EDUCATION AND LIFE SCIENCES HAS A NATIONAL AND GROWING INTERNATIONAL REPUTATION FOR PIONEERING APPROACHES TO LEARNING AND TEACHING, THROUGH THE CREATION OF CUTTING EDGE SIMULATED EXPERIENCES, AND HAS CONSISTENTLY ACHIEVED “EXCELLENT” RATINGS IN NATIONAL QUALITY AUDITS.

The School of Health Sciences is one of three Schools within the Faculty: the School of Education and Social Work, the School of Nursing and Midwifery and the School of Health Sciences. It was established in 2014 to accommodate our growing Biomedical Science and Sports courses portfolio. The school aspires to be one of the largest and most diverse providers of public health education in the country.

We have a good history of engagement with overseas ministries, academic institutions and professional bodies to transform local healthcare and education practices. Activities include collaborative research and delivery, student progression and mobility of staff and students.

#### Our facilities include:

- Mock operating theatre and hospital wards
- Fully equipped midwifery skills/birthing room
- Virtual radiotherapy suite
- A radiography imaging suite
- A simulated home environment room
- Specialist speech and language therapy clinic room
- Digitally enabled bioscience laboratory



HEALTH, EDUCATION AND  
LIFE SCIENCES COURSES

Undergraduate

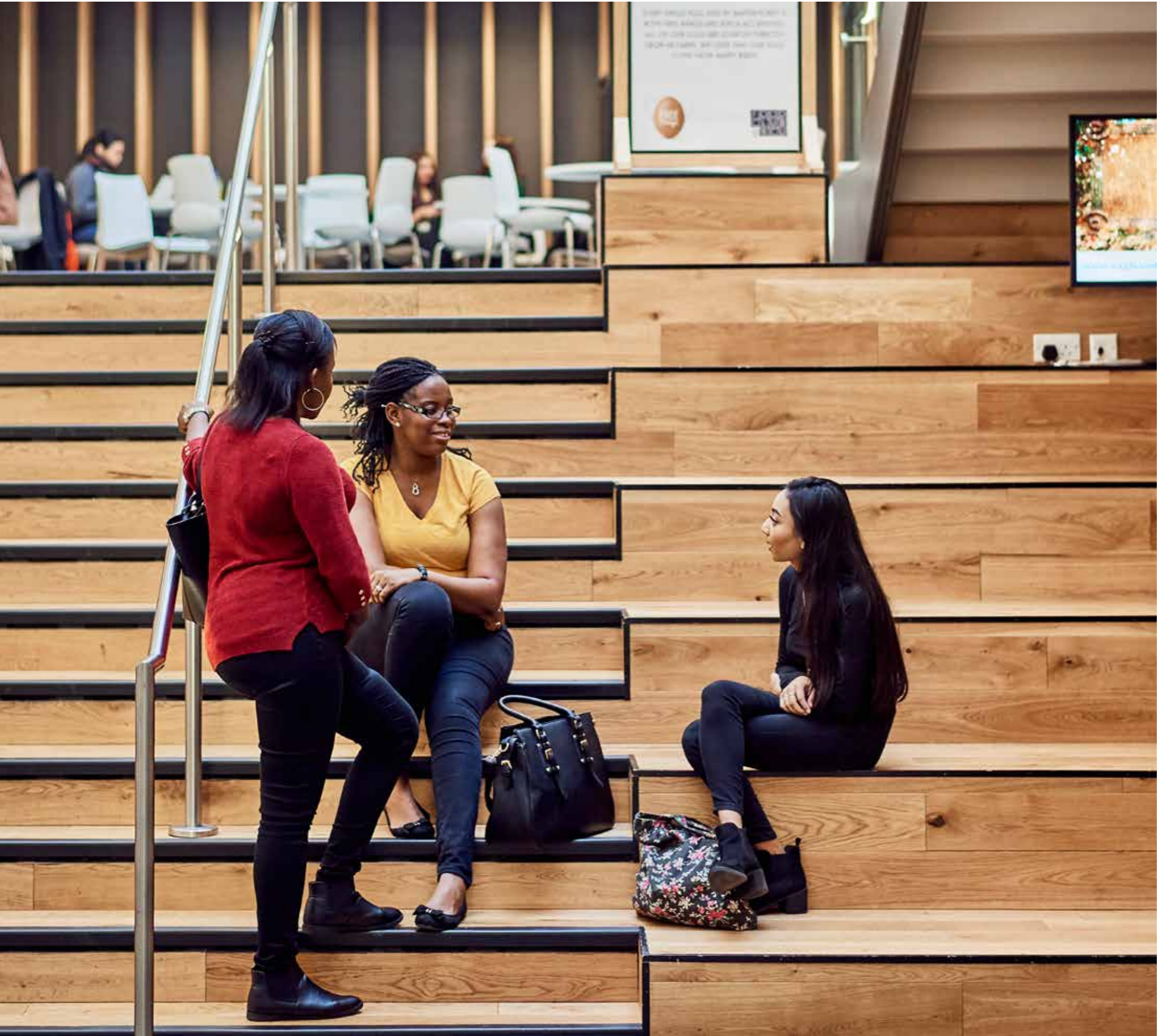
BEng/MEng Integrated Masters Biomedical Engineering
BSc (Hons) Biomedical Sciences
BA (Hons) Early Childhood Studies
BA (Hons) Early Childhood Studies (1 Yr Top Up)
BA (Hons) Education Studies
BSc (Hons) Food and Nutrition
BSc (Hons) Health Studies (Public Health)
BSc (Hons) Physical Education and School Sport
BSc (Hons) Professional Practice (Healthcare for International Students)
FdSc Rehabilitation Work (Visual Impairment)
BSc (Hons) Sport and Exercise Nutrition
BSc (Hons) Sport and Exercise Science
BSc (Hons) Sports Therapy
BA (Hons) Working with Children, Young People and Families

Postgraduate

MSc Diabetes Care
MSc Dietetics
MA Education (Childhood Studies)
MA Education (Early Years Leadership)
MA Education (International Education)
MSc Physiotherapy
PgCert/PgDip/MSc Public Health
MSc Speech and Language Therapy*

\*subject to approval





# YOUR ARRIVAL

**MOVING COUNTRIES IS A HUGE DECISION AND WE WANT TO MAKE THAT DECISION AS EASY AND SMOOTH AS POSSIBLE. OUR INTERNATIONAL TEAM WILL HELP YOU EACH STEP OF THE WAY AND IT DOESN'T STOP WHEN YOU ARRIVE, AS WE HAVE AN EXTENSIVE SUPPORT SYSTEM IN PLACE TO HELP YOU WITH ANY ISSUES YOU MAY HAVE.**

### Meet and greet

We'll meet you at Birmingham Airport and make sure you're dropped off at your student accommodation. Visit [www.bcu.ac.uk/meet-and-greet](http://www.bcu.ac.uk/meet-and-greet) for more information.

### Visas and immigration

The International Student Visa Advisers provide advice on UK Immigration law, including the impact of academic decisions on your visa, replacing lost visas and extending student visas.

### Welcoming you

During September we hold a week of welcome activities especially for new international students. You will enrol on your course, get information about the University, meet members of staff, open a bank account, register with the police and register with a doctor. It's also an opportunity to attend social events, familiarise yourself with Birmingham, and make the city your home away from home.

### Jobs and careers

We can help you get a National Insurance number, look for a part-time job and improve your CV. Our student employment agency, OpportUNIty, allows you to apply for part-time jobs at the University, subject to any visa restrictions. Our Enterprise, Innovation and Business Engagement department will assist you if you aim to apply for a Tier 1 Graduate Entrepreneurship Scheme visa towards the end of your studies.

### Students' Union, sports and societies

When you become a Birmingham City University student you automatically become a member of our Students' Union, and have access to the wide range of fantastic services and facilities. The International Student Association will help you get acquainted with student and city life. From something as simple as having a meal at one of the city's many restaurants, to a day trip to a different location, we're here to create a welcoming social environment for our students.



# YOUR STUDENTS' UNION

WELCOME TO BCUSU – YOUR STUDENTS' UNION!

## AT A GLANCE



A voice throughout your time here



Over 200 student groups to get involved in



Volunteering projects on a local, national or international scale



A unique, Grade II listed pub based at the City Centre Campus



Top notch support and advice



Help finding your student home



**AS SOON AS YOU ENROL AT BIRMINGHAM CITY UNIVERSITY YOU ARE AUTOMATICALLY A MEMBER OF THE STUDENTS' UNION, WHICH MEANS YOU DON'T HAVE ANY FORMS TO COMPLETE OR MEMBERSHIP FEES TO PAY.**



### INTERESTED IN SOCIETIES?

We sent our intrepid vlogger Joey to try out some of the societies at BCU. See how he gets on at [www.bcu.ac.uk/societies](http://www.bcu.ac.uk/societies)

We like to consider that you're part of our family and that you will be for the entire time you study here. Being a part of the BCUSU family means you have free access to all of our amazing services and facilities, including:

**Top notch support** and advice from our specially trained advisers on a range of topics, including money, health, academia and housing.

**A voice throughout your time here:** we guarantee you will be listened to and represented by us. We campaign on your behalf to make your student experience even better!

**Over 200 student groups** for you to get involved in, including sports, activities, religion, special interest and subject specific. As well as a great way to meet new people, being a member or leading a student group will look great on your CV!

Volunteering projects on a local, national or international scale will enhance your existing skills and help you to learn new ones.

**Our very own letting agency** to help you find your next student home without the hassle.

**Exciting entertainment** to make your social life as fun-filled as possible – it's not all academic, you know!


**A unique, Grade II listed pub** at the City Centre Campus with special prices on all our food and drinks and a special entertainment programme just for you.

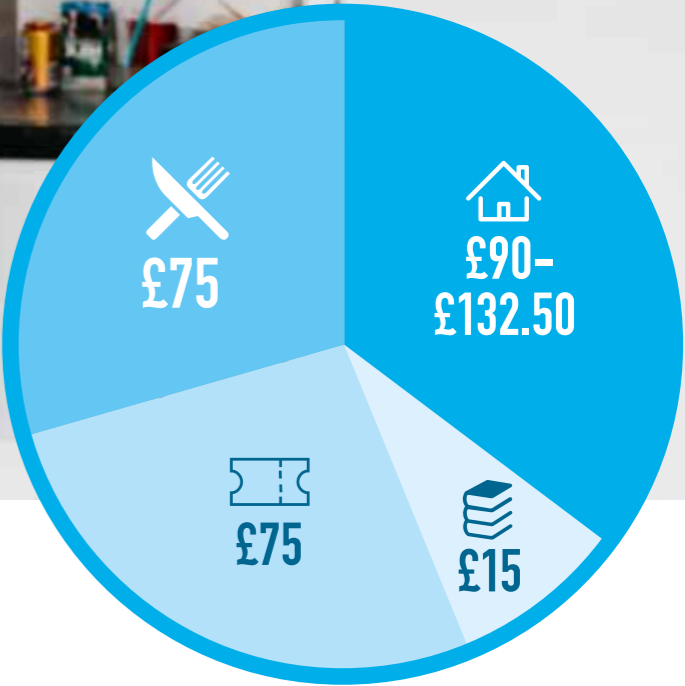
**Shops on our campuses**, offering all of those essential items you'll need.

We're run by students for students and each year we ask all our students to vote for who they want to lead BCUSU.

[www.bcusu.com](http://www.bcusu.com)



  
EU students pay the same as home students



# TUITION FEES

**YOUR ANNUAL TUITION FEES COVER EVERYDAY TUITION, EXAMINATION COSTS AND MEMBERSHIP OF THE STUDENTS' UNION. HALF OF YOUR FEES ARE PAID AT ENROLMENT, AND THE REST CAN BE PAID IN INSTALMENTS, PROVIDED YOU HAVE A UK BANK ACCOUNT.**

Programme level	Non-EU students
Birmingham City University International College	£8,900
Undergraduate	£12,300
Postgraduate	From £12,300*

Some programmes have a different tuition fee structure. Please check our website for the most up-to-date fees.

\*Course fees vary per postgraduate course

Find out more information at [www.bcu.ac.uk/international/tuition-fees](http://www.bcu.ac.uk/international/tuition-fees).

# LIVING COSTS

**IF YOU'RE FROM OUTSIDE THE EU, YOU'LL NEED TO HAVE SUFFICIENT FUNDS TO STUDY IN THE UK. YOU WILL NEED TO ALLOW IN EXCESS OF £1,015 PER MONTH OR IN EXCESS OF £9,135 FOR THE FIRST NINE MONTHS OF YOUR STUDIES.**

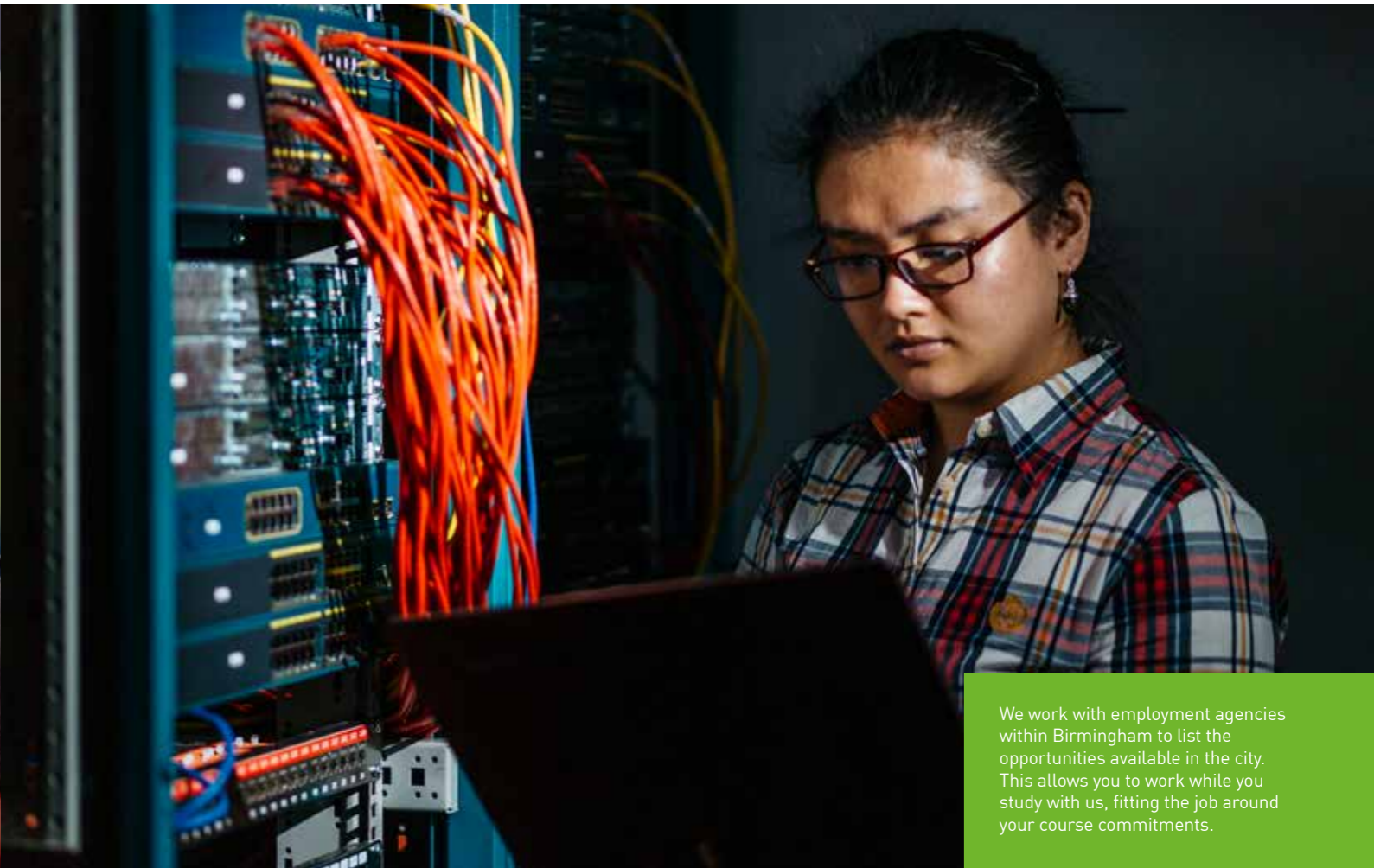
You can expect to pay the following each week:

	Description	Cost
Accommodation	Private furnished room, shared kitchen, gas, water, electricity, wi-fi	£90 - £132.50
Study items	Books, stationery, printing	£15
Food and drink	Weekly shopping, dining out, social nights	£75
Additional costs	Insurance, clothing, hairdressers, cinema etc.	£75
Weekly total		£255 - £297.50*

\*These costs will vary dependent on your personal circumstances.  
Find out more information at [www.bcu.ac.uk/international/living-costs](http://www.bcu.ac.uk/international/living-costs).



**£1.2 MILLION**  
available in scholarships



We work with employment agencies within Birmingham to list the opportunities available in the city. This allows you to work while you study with us, fitting the job around your course commitments.

# SCHOLARSHIPS

**WE UNDERSTAND THAT YOUR ACADEMIC CAREER IS A COSTLY ONE, THEREFORE WE WOULD LIKE TO HELP YOU TO FIND FUNDING FOR YOUR STUDIES AT BIRMINGHAM CITY UNIVERSITY AND HAVE OVER £1.2 MILLION AVAILABLE IN SCHOLARSHIPS.**

**BCU Academic Excellence Scholarship**  
Depending on your prior education background, you may be entitled to a scholarship ranging from £1,000 up to £2,000.

If you're an undergraduate student at BCU, looking to continue your studies with a Master's degree, you could be eligible for an Achievement Scholarship of up to £3,000. Find out more: [www.bcu.ac.uk/stay](http://www.bcu.ac.uk/stay)

**External scholarship providers**  
There are a number of providers who offer financial support for your journey to studying in the UK. [www.bcu.ac.uk/international/scholarships](http://www.bcu.ac.uk/international/scholarships)

**Prompt Payment Bursary**  
If the students pay their tuition fees in full before travelling to, or during their enrolment in the UK, they will be entitled to a £300 prompt payment discount. This discount applies to the amount the students owe after any scholarships or bursaries have been deducted from their tuition fee.

# EARN WHILE YOU LEARN

**'OPPORTUNITY: STUDENT JOBS ON CAMPUS' ENSURES THAT OUR STUDENTS ARE GIVEN THE OPPORTUNITY TO FILL MANY PART-TIME TEMPORARY POSITIONS WITHIN THE UNIVERSITY.**

By taking part in the scheme, you will gain valuable experiences and employability skills, enhancing your prospects in the job market. It will also allow you to become more involved in University life by delivering, leading and supporting many aspects of the learning experience, from administration to research and mentoring roles.

Example roles include:

- Administration assistants
- Laboratory assistants
- Marketing assistants
- Student ambassadors
- Student academic mentors
- Copywriting
- Magazine editor
- Technical assistant
- Web developer
- Video and post-production assistant
- Database assistant
- Disability assistant
- Receptionist
- Assistant PA.

[www.bcu.ac.uk/student-employment](http://www.bcu.ac.uk/student-employment)

# THE APPLICATION PROCESS



## 1 SELECT YOUR COURSE

## 2 CHECK ELIGIBILITY

If you don't meet entry requirements you may be able to study a foundation year at Birmingham City University International College (BCUIC).

## 3 APPLY

Online, on paper, via a representative or through UCAS.

## 4 RECEIVE YOUR OFFER LETTER

Your offer letter will provide details about: course offered, tuition fee, scholarship awarded, course start dates and other relevant information.

## 5 ACCEPT AND PAY YOUR DEPOSIT\*

Accept and pay your deposit to confirm your place at Birmingham City University.

## 6 RECEIVE YOUR CAS LETTER\*

We will email you a Confirmation of Acceptance of Studies (CAS) number in a CAS statement.

## 7 APPLY FOR YOUR VISA\*

Once you have received your CAS letter, you can then apply for your visa. You can find guidance on applying for your visa: [www.bcu.ac.uk/international/visa](http://www.bcu.ac.uk/international/visa)




For more information on the application process visit:

[www.bcu.ac.uk/international/application-process](http://www.bcu.ac.uk/international/application-process)

\*Only applicable to non-EU students

# HOW TO APPLY



  
**10 DAY PROMISE**  
Once you've submitted a complete application - we'll make you an offer within 10 working days.

THERE ARE FOUR EASY WAYS THAT YOU CAN SEND AN APPLICATION TO US:



**ONLINE**

Apply early and avoid the August rush. Select your course of choice on the website and click "apply now".



**PAPER APPLICATION**

Request an application form from [international.enquiries@bcu.ac.uk](mailto:international.enquiries@bcu.ac.uk) and return by email with your scanned documents.



**IN-COUNTRY REPRESENTATIVES**

Use the guidance and assistance of Birmingham City University reps in your country. You can find them listed at: [www.bcu.ac.uk/research-your-country](http://www.bcu.ac.uk/research-your-country)



**UCAS**

Undergraduate students can apply through UCAS. The University's UCAS code is **B25 BCITY**.  
For support on how to apply, you can contact us on +44 121 331 5389 or email [international.enquiries@bcu.ac.uk](mailto:international.enquiries@bcu.ac.uk).



# 6.0

You'll need a minimum 6.0 IELTS score to study here. To achieve 6.0, you can take our pre-sessional English courses.

## ENTRY REQUIREMENTS

Once you have found the course you would like to apply for, it's important that you have achieved, or are aiming to achieve, the entry requirements for that course. Our website is the best source for this information but as a general rule, please see the table on the right:

For your country entry requirements, please visit: [www.bcu.ac.uk/international/countries](http://www.bcu.ac.uk/international/countries)

Level	Requirement
Undergraduate	You should be educated to a standard comparable to British A-Level standard
Postgraduate	You should normally hold a qualification which is comparable to a British Bachelor's (Honours) degree
PhD	You should have a Master's degree in an appropriate discipline
MPhil	You should normally hold a First or Second Class Honours undergraduate degree or equivalent

## ENGLISH REQUIREMENTS

To be successful while studying at Birmingham City University, you'll need to have a good level of English. The majority of our courses require a minimum IELTS score of 6.0 overall (with no band less than 5.5).

If IELTS isn't your main English language qualification provider, we also accept a range of other qualifications as evidence of your English language abilities. Please visit our website to find out if we accept your local qualification.

### Pre-sessional English courses

Pre-sessional English courses are for international and EU students whose first language is not English, and who have a conditional offer to study for a degree course. The courses are designed to equip international students with the academic skills they need to succeed during foundation, undergraduate and postgraduate courses and to raise their English language level to meet the entry requirements of their main programmes.

### We have three programmes to offer students:

- 16 weeks
- 10 weeks
- 6 weeks

[www.bcu.ac.uk/international/english](http://www.bcu.ac.uk/international/english)

### NEED TO IMPROVE YOUR ENGLISH?

You need an extra score of 0.5	Available course 6-week pre-sessional English
1.0	10-week pre-sessional English
1.5	16-week pre-sessional English or 1 year Foundation Certificate in English for Academic Purposes (FCEAP)

If you have 4.0, you can take our one-year Foundation Certificate in English for Academic Purposes which has a 100% pass rate! [www.bcu.ac.uk/fceap](http://www.bcu.ac.uk/fceap)



1,000

Enrolled over 1,000 students  
since opening in 2013

# FOUNDATION PROGRAMMES

## YOUR DIRECT PATH TO UNIVERSITY

**BIRMINGHAM CITY UNIVERSITY  
INTERNATIONAL COLLEGE  
(BCUIC) OFFERS A RANGE  
OF DEDICATED PATHWAY  
PROGRAMMES WITH  
ADDITIONAL ACADEMIC  
SUPPORT – TO HELP PREPARE  
YOU FOR A BACHELOR'S  
OR MASTER'S DEGREE AT  
BIRMINGHAM CITY UNIVERSITY.**

BCUIC is a good choice for you if you don't meet the academic or English language requirements to go straight onto one of our courses, or if you have been away from education for some time and want to improve your skills.

Depending on your current academic level and your chosen degree programme, you can enrol onto a one, two or three-semester pathway programme with BCUIC at either Foundation level, First Year level or Pre-Master's level.

**What does BCUIC offer?**

- Dedicated pathway programmes onto over 125 degree courses.
- A flexible entry system, with three intakes every year (January, May or September), so that you can start studying at a time that best suits you.
- Just one visa for the full duration of your academic studies.
- Smaller class sizes, allowing for plenty of contact time with tutors, and a greater focus on academic study skills to help you succeed at the University.
- Access to the University's facilities and services – with the benefit of additional support.

For more information and to apply to BCUIC, visit [www.bcu.ac.uk/bcuic](http://www.bcu.ac.uk/bcuic)

Level	Foundation	First Year	Pre-Master's
Faculty of Arts, Design and Media	✓		✓
Faculty of Business, Law and Social Sciences	✓	✓	✓
Faculty of Computing, Engineering and the Built Environment	✓	✓	✓
Faculty of Health, Education and Life Sciences	✓	✓	

# MEET US ABROAD

We are always pleased to meet prospective students in person. We visit many schools, colleges and higher education fairs to provide support and information for those thinking about applying. If you're in the UK, we'd love to meet you, but if you are unable to visit us here, there are plenty of other opportunities.

## Meet us

All of our representatives have in-depth knowledge of the application process for students in each country they visit. You can find us in the countries shown on the map below, or alternatively you can check out our website for exact dates and times:

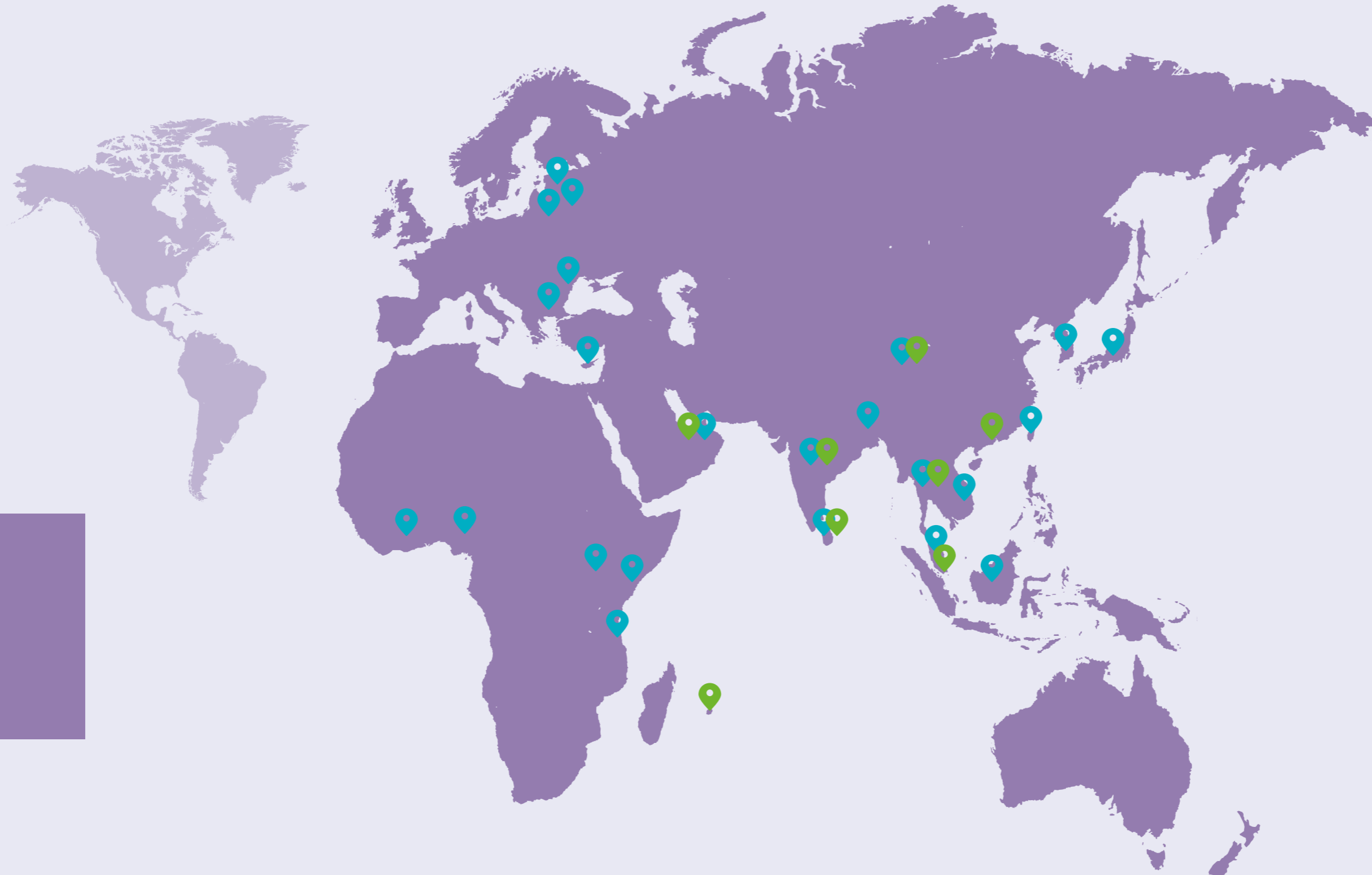
[www.bcu.ac.uk/international/meet-us](http://www.bcu.ac.uk/international/meet-us)

## International partnerships

Birmingham City University collaborates successfully with partners from around the world. Our international partnerships team has regional expertise across different world regions and ensures that our collaborations are developed in the most professional manner, complying with UK quality assurance standards to the benefit of our students and partners.

Our agreements give students from our partner universities the opportunity of having advanced entry to a variety of our courses. In addition, we are also able to validate local qualifications and deliver our courses in foreign countries.

You can find further information about our current partnership agreements at [www.bcu.ac.uk/international/partners](http://www.bcu.ac.uk/international/partners).



## GLOBAL

We welcome over 24,000 students from some 80 countries to study with us.

## Meet us

**Africa**  
Ghana  
Kenya  
Nigeria  
Tanzania  
Uganda

**Asia**  
Bangladesh  
China  
Dubai  
India  
Indonesia  
Japan  
Malaysia  
South Korea  
Sri Lanka  
Taiwan  
Thailand  
Vietnam

**Europe**  
Bulgaria  
Cyprus  
Estonia  
Latvia  
Lithuania  
Romania

## Partners

**Africa**  
Mauritius

**Asia**  
Hong Kong (China)  
India  
Singapore  
Sri Lanka  
Thailand  
United Arab Emirates  
China

# INFORMATION FOR PARENTS

## CHOOSING THE RIGHT UNIVERSITY FOR YOUR SON OR DAUGHTER IS A BIG DECISION, ESPECIALLY IF YOU ARE SENDING THEM OVERSEAS TO STUDY.

As a parent, you want a university that is going to help your child realise their potential. A university with an excellent reputation and highly awarded lecturers who connect with their students. A learning environment with an astounding record for graduating successful entrepreneurs, nurses or teachers, as well as a university with excellent extracurricular opportunities that promote learning and personal growth outside of the classroom, and a safe, welcoming and diverse campus.

**90%** of the UK is only  
**4 HOURS AWAY**  
from Birmingham

**OVER 25%**  
of the UK's gaming workforce  
is in Birmingham



Cost of living is  
**32%**  
cheaper than London

**40%**

of Birmingham's population  
are under 25 (Birmingham is  
Europe's youngest city)



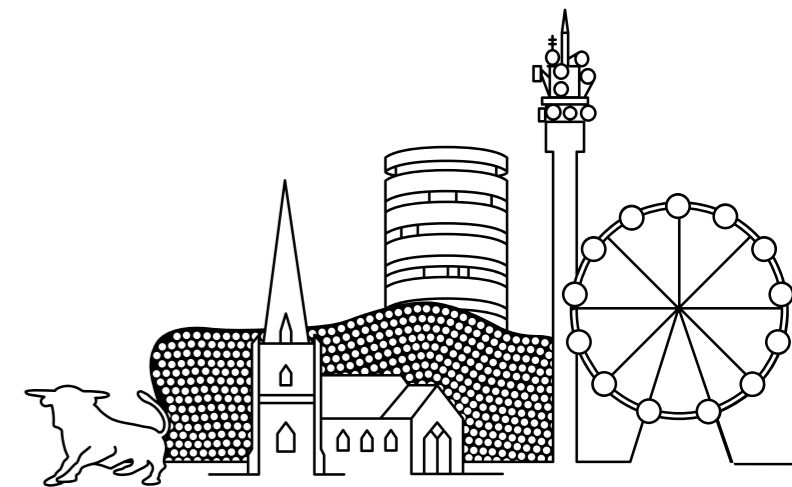
**£768m**

Has over 6000 tech firms which employ over 38,300 people and deliver over £768m to local economy

\*www.bcen.net/category/uncategorized/

## BIRMINGHAM IS BOOMING!

Birmingham is the UK's  
most successful city  
outside of London -  
check out why\*:



Birmingham is  
ranked in the top  
100 cities in the  
world for quality  
of life



**12,108  
NEW  
BUSINESSES**  
BEGAN IN 2017

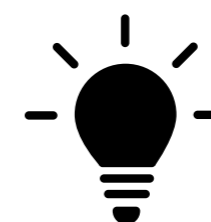


**High Speed  
Rail**

which is being built  
in Birmingham will  
reduce the journey  
time between London  
and Birmingham to  
just 43 minutes and is  
creating over 10,000  
jobs in the city!

**WE ARE  
INVENTIVE!**

We created the  
photocopier, x-ray  
machine, oven, smoke  
alarm and tyres!



**IF YOU HAVE ANY QUERIES  
REGARDING YOUR CHILD'S  
APPLICATION, ANY QUERIES  
ABOUT THE UNIVERSITY, OR  
JUST WANT TO CHAT YOU  
CAN USE OUR HANDY  
REQUEST TO CALL SERVICE  
AND ONE OF OUR ADVISORS  
WILL GIVE YOU A CALL FOR  
FREE OF CHARGE.**

[www.bcu.ac.uk/request-a-call](http://www.bcu.ac.uk/request-a-call)

**Birmingham City University  
International Office**

University House,  
15 Bartholomew Row,  
Birmingham  
B5 5JU  
United Kingdom  
T: +44 (0) 121 331 5389  
E: [international.enquiries@bcu.ac.uk](mailto:international.enquiries@bcu.ac.uk)  
[www.bcu.ac.uk/international](http://www.bcu.ac.uk/international)

