

# Applicant Visit Day

Programme 2017



[bcu.ac.uk/visitdays](http://bcu.ac.uk/visitdays)

# Welcome



Welcome to Birmingham City University, a university at the heart of a city that is at the heart of the country. We are right at the centre of the exhilarating cultural, social, economic and physical changes that are transforming our city for the future.

The University is defined by its location in this unique and dynamic city. From its role at the forefront of the Industrial Revolution to its status today as one of the country's foremost business and leisure destinations, Birmingham's distinctive economic profile has constantly shaped and informed our courses.

By building strong partnerships with both students and industry professionals, and offering an inspirational learning environment, we've helped to enrich the lives of leading architects, designers, lawyers, engineers, healthcare professionals, musicians and many more.

Our innovative teaching methods, ground-breaking research and industry collaborations are backed by almost 40 professional accreditations. Ours is a university without walls and an environment of real world opportunity where students' work is indistinguishable from what you will do when you graduate.

Following your application to study with us, we would like to give you the opportunity to learn more about us at one of our Applicant Visit Days. These are designed to provide you with a more in-depth picture of your chosen course, what to expect as a student and how to make the most of your time with us. We aim to make these days as informative, interesting and relaxing as possible for you. To find out more information, including the full schedule for your subject of interest, please see the relevant pages in this booklet. Further information will also be posted on our website at [www.bcu.ac.uk/visitdays](http://www.bcu.ac.uk/visitdays).

We hope you have an enjoyable time at your Applicant Visit Day.

## CONTENTS

Welcome	2 – 3	Birmingham City Business School	10	School of Fashion and Textiles	20	School of Visual Communication	28
About Birmingham City University	4	Birmingham School of the Built Environment	12 – 13	Interactive Entertainment	21	Investing in our campuses	30 – 31
About Applicant Visit Days	7	School of Computing and Digital Technology	15 – 16	School of Jewellery	23	Directions (City Centre)	32 – 33
Birmingham School of Architecture and Design	8	School of Education	17	School of Law	24	Directions (City North)	34 – 35
Birmingham School of Art	9	School of English	18	Birmingham School of Media	25	Directions (School of Jewellery)	36 – 37
				School of Social Sciences	26	Directions (Birmingham School of Art)	38 – 39
				School of Health Sciences	27		



# About Birmingham City University

Birmingham City University has around 24,000 students from 80 countries, making it one of the largest and liveliest institutions in the West Midlands region. The University enjoys almost 40 professional accreditations and a large number of successful industry partnerships.

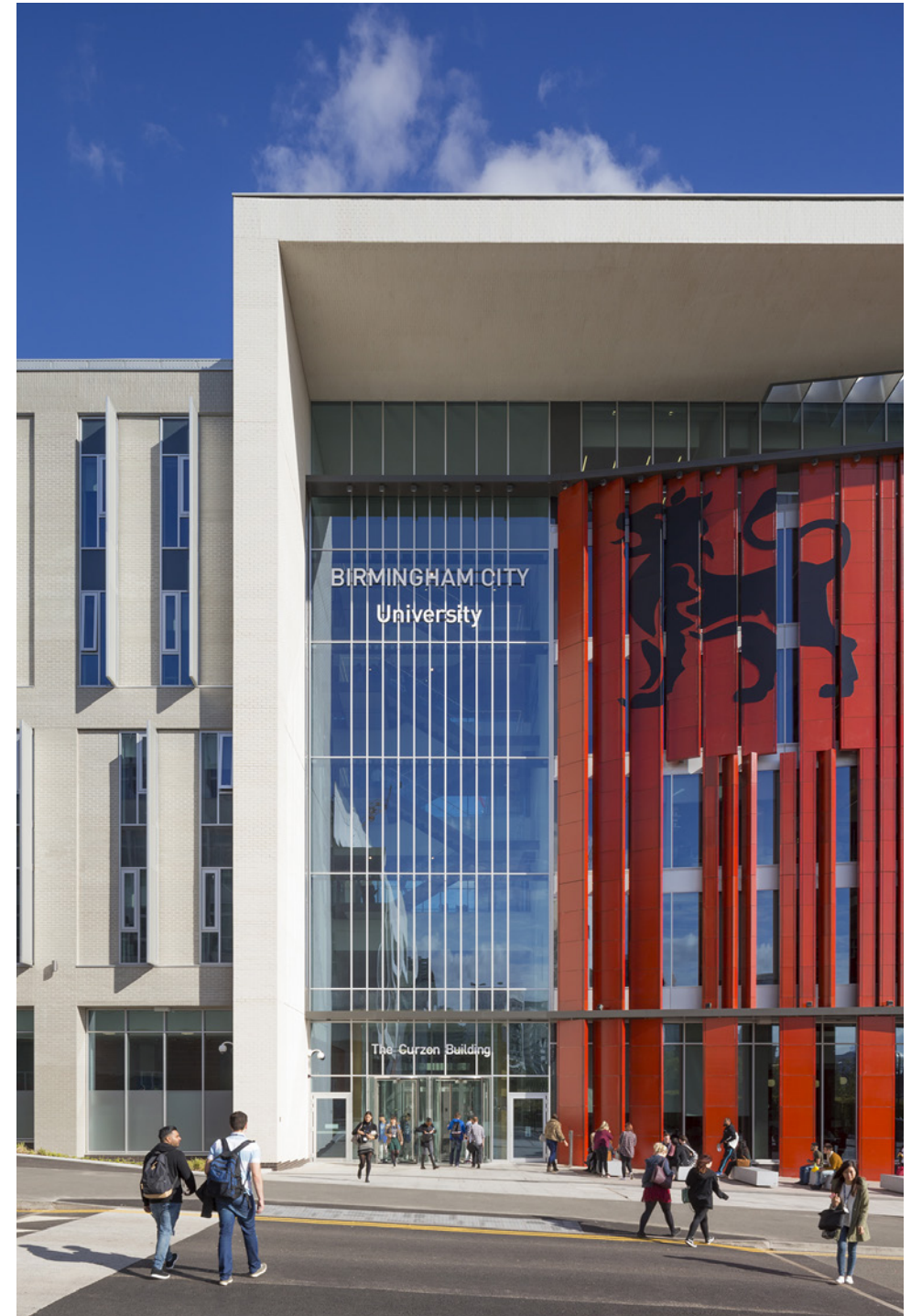
We have been educating professionals since 1843, and our commitment to developing graduates with the skills and experience employers need means that 94 per cent of our undergraduates were in employment or further study within six months (DLHE survey 2014/15).

All of our courses have a strong focus on preparing you for the world of work, with many offering the option of a four-year 'sandwich' mode, with a full year in industry providing valuable work experience. The University has a well-established reputation for delivering in-company training and development programmes, working with some of the country's leading employers.

Our teaching staff come from and maintain their links with industry, ensuring you are given an insight into the latest trends and ideas. We are constantly looking for new ways to enhance the learning experience, with inspiring visiting lecturers and learning environments that are designed to replicate the workplaces you aim to enter. We even give you the chance to gain work experience in real roles around the University, through our student employment agency, OpportUNITY – Student Jobs on Campus.

We're dedicated to putting students at the heart of everything we do, giving you the best opportunities for future success.

For more information about the University, please visit [www.bcu.ac.uk](http://www.bcu.ac.uk).





# About Applicant Visit Days

## HOW IT WORKS

If you have applied to an undergraduate course in one of the schools listed in this booklet, you should have received an email about how to register for your place at one of our Applicant Visit Days.

As part of the day, you may be asked to attend a one-to-one interview as a mandatory part of the application process. Details of which courses require an interview are found within the school pages of this booklet.

You will need the username and password, which should be on the email you received, to log in and browse our Applicant Visit Day dates and to register your attendance. You can also find your username and password in the letter accompanying this booklet.

Once you register, you will be sent further information via email.

To register to attend one of our Applicant Visit Days visit [www.bcu.ac.uk/mysrs](http://www.bcu.ac.uk/mysrs) and sign in using your unique username and password.

If you haven't yet been invited to attend one of our Applicant Visit Days, but you have been offered a place to study at Birmingham City University, please let us know by calling 0121 331 6295.

## LOCATION

Our Applicant Visit Days take place at various locations across the city, depending on your chosen subject of study. Find your school page in this booklet and the location you should attend is noted under the school name at the top of the page. Directions to our campuses can be found towards the back of this booklet.

## ON THE DAY

Registration and check-in will open one hour before your activity starts. Please ensure you arrive no later than 10 minutes before your activity is due to start, to enable you enough time to register and check-in. There will be knowledgeable representatives from different services available to answer any questions you may have about university life including:

- Accommodation
- International Office
- Student Services (advice on childcare, money matters, health and wellbeing, job prospects, and visas and immigration).

Our award-winning student support ensures that you are given the help you need to succeed every step of the way. We provide high-quality services that support you, enhance your learning experience and are responsive to your changing needs before, during and after your time at university.

Just look out for the stands and displays and come and talk to us for helpful, individual advice.

## BIRMINGHAM SCHOOL OF ARCHITECTURE AND DESIGN

**Location:** The Parkside Building, City Centre Campus, B4 7BD

**Activity start times:** 10am on Saturdays, 12.15pm on Wednesdays

Based at our state-of-the-art Parkside Building, part of our City Centre Campus, Birmingham School of Architecture and Design has a range of excellent facilities that accurately reflect advanced professional practice. These include contemporary design studios, computer-aided design (CAD), a digilab and a range of impressive workshops (for woodwork, metal, glass and ceramics) to support our Architecture, Landscape, Product Design, and Interior Architecture and Design students.

Our teaching staff are active in the latest practice and research, enhancing your employability and enabling you to gain insight into contemporary issues in architecture and design. This has previously helped 95 per cent of our graduates progress into work and/or study within six months (DLHE) and contributed to our students reporting 95 per cent satisfaction overall for the School in the 2016 National Student Survey.

Our courses work with over 100 practices, construction consultants and experts, including over 60 visiting tutors from industry who support our staff team. Our Architecture courses provide RIBA accreditation at Parts 1, 2 and 3, while our Landscape courses are similarly validated by the Landscape Institute. These accreditations and links with industry ensure that our courses remain fresh and relevant, in addition to providing valuable industry contacts. The excellent relationships extend to offering work placements for our Level 5 students in Architecture, Landscape, and Interior Architecture and Design.

We encourage you to embrace the multi-disciplinary nature of our School which manifests in places such as our Co-Lab live project module and Superstudio, a weekly event which provides opportunities for students to work across the four main disciplines of the School, including training, workshops, films and events, and whole school lectures by renowned architects and designers.

**When you attend an Applicant Visit Day, you will have the opportunity to do the following:**

- Tour our professional, industry-standard facilities, which include design studios, computer and project laboratories, and a virtual building site.
- Meet staff and students, ask questions and find out more about how the course works in practice.
- Take part in a group workshop which allows you to get real insight into working in a design studio, and receive feedback on how you worked.
- Show your portfolio and gain feedback if you wish.

## BIRMINGHAM SCHOOL OF ART

**Location:** Birmingham School of Art, Margaret Street, B3 3BX

**Activity start times:** Various start times. Interview required for all courses – visit [www.bcu.ac.uk/mysrs](http://www.bcu.ac.uk/mysrs) for more details.

By studying in our distinctive Venetian Gothic, Grade I listed environment at Margaret Street, you will have access to state-of-the-art studios, fully-resourced workshops, a richly-stocked library and purpose-built spaces to present your work. We also engage in teaching, learning and research locally, nationally and around the world.

All of our staff are active practitioners, ensuring you will receive access to the latest thinking, activities and professional networks. Our courses emphasise ideas-driven contemporary art practices, carried out by individuals and groups of students through critical analysis, debate, creative risk, imagination and presentation. We will help you develop your practice and open doors for you to participate in extensive projects and present your work in a wide variety of appropriate environments.

We maintain excellent links with major institutions within and beyond the city, examples including Tate Liverpool, Ikon Gallery, New Art Gallery, Walsall, Eastside Gallery, Birmingham Museum and Art Gallery, and New Art West Midlands. We also have links with corporate partners through organisations such as the Colmore Business District and others. Deutsche Bank sponsors an annual award of £10,000 to support career development.

Our graduates go on to a multitude of careers following their time with us, ranging from professional artists, designers and illustrators to film-makers, curators and teachers.

PLEASE NOTE: Applicants for all courses within Birmingham School of Art will attend a one-to-one interview during the Applicant Visit Day as a mandatory part of the application process. Details will be sent to you via email.

**When you attend an Applicant Visit Day you will have the opportunity to do the following:**

- Tour our industry-standard facilities, which include cutting-edge workshops, presentation spaces and studios, as well as the International Project Space, a dedicated area which bridges the boundary between the School and the wider art world.
- Meet staff and students, ask questions and find out more about how the course works in practice.
- Have a one-to-one with a tutor to discuss your portfolio and interests.



## BIRMINGHAM CITY BUSINESS SCHOOL

**Location:** The Curzon Building, City Centre Campus, B4 7BD

**Activity start times:** 10am on Saturdays, 1pm on Wednesdays

Birmingham City Business School is built on business, which means all our new courses deliver work-integrated learning. Through short projects, long placements, partnerships with business and all the right accreditations, you start your career the minute you walk through our door. We have a unique relationship with Birmingham, which is of course renowned for its entrepreneurial and commercial past, present and future. We provide you with the building blocks for a successful career, by developing your skills for life as well as teaching you what you need to learn for work.

Our academics have first-hand experience and work closely with industry leaders to ensure that our courses truly reflect the needs of business professionals.

Our courses are strongly linked to the relevant professional bodies, including the Association of Chartered Certified Accountants (ACCA), Association of Accounting Technicians (AAT), Chartered Institute of Management Accountants (CIMA), Chartered Management Institute (CMI), Chartered Institute of Marketing (CIM) and Chartered Institute of Personnel and Development (CIPD), as well as being a recognised Partner in Learning with the Institute of Chartered Accountants in England and Wales (ICAEW).

We are also 'Platinum Approved' by the ACCA, which is the highest level of accreditation, providing evidence of high-quality tuition and outstanding pass rates.

Our industrial and professional business links provide opportunities to apply the skills learned during study and forge the contacts that will help develop your future career.

**When you attend an Applicant Visit Day you will have the opportunity to do the following:**

- Meet staff and students, ask questions and find out more about how the courses work.
- Visit our current facilities in the new Curzon Building, located on our City Centre Campus.
- Talk to our placements team and meet returning placement students who will share their experiences.
- Take part in an informal Q&A session with staff and students.
- Find out how our employability opportunities can make you stand out as a graduate.
- Hear more about our distinctive, fast track Professional Practice degrees.
- Discuss our professional body exemptions and what they mean for you and your career.



## SCHOOL OF ENGINEERING AND THE BUILT ENVIRONMENT – Built Environment

**Location:** Millennium Point, City Centre Campus, B4 7XG (report to Level 2)

**Activity start times:** Session 1 – 9.30am or Session 2 – 12.30pm on Saturdays, 1pm on Wednesdays

Birmingham City University's Built Environment courses prepare you to work in the field, with most of our courses accredited by at least one of the four professional bodies for the property and construction sector.

Our strong links with employers allow you to apply what you learn in a practical context through work placement opportunities. We offer part-time placements with Mott MacDonald and other major firms throughout the academic year.

Our campus is adjacent to the proposed HS2 terminus; many of our live team projects involve working with Birmingham City Council and construction firms, as part of the Professional Practice modules, to help deliver elements of this major construction and regeneration project.

PLEASE NOTE: As an applicant to a Built Environment course, you will need to attend an Applicant Visit Day for a short one-to-one interview before we can confirm your offer to join us.

### When you attend an Applicant Visit Day you will have the opportunity to do the following:

- Meet key teaching staff and current students to learn about life as part of our academic community.
- Visit our Computer Aided Design (CAD), Building Information Modelling (BIM) and Computer Assisted Taking Off (CATO) lab, commonly referred to as "The Office". This environment offers you an individual/group environment to work on all aspects of design, programming and measurement, using the latest professional software.
- See the new Curzon Building constructed by our partner Wilmott Dixon, and discuss how your intended profession might contribute to designing, costing, constructing and maintaining this and other development projects.
- View examples of the coursework projects you will undertake and technologies you will use during your course; your Applicant Visit Day is a chance to understand the huge range of ways you'll study and be assessed.

## SCHOOL OF ENGINEERING AND THE BUILT ENVIRONMENT – Engineering

**Location:** Millennium Point, City Centre Campus, B4 7XG (report to Level 2)

**Activity start times:** Session 1 – 9.30am or Session 2 – 12.30pm on Saturdays, 1pm on Wednesdays

Engineering students are based at Millennium Point, a landmark building in central Birmingham with well-equipped workshops and laboratories to provide a link between theoretical learning and practice.

All of our Engineering courses are professionally accredited by either the Institution of Engineering and Technology or the Institution of Mechanical Engineers, to help you become an Incorporated or Chartered Engineer after graduation.

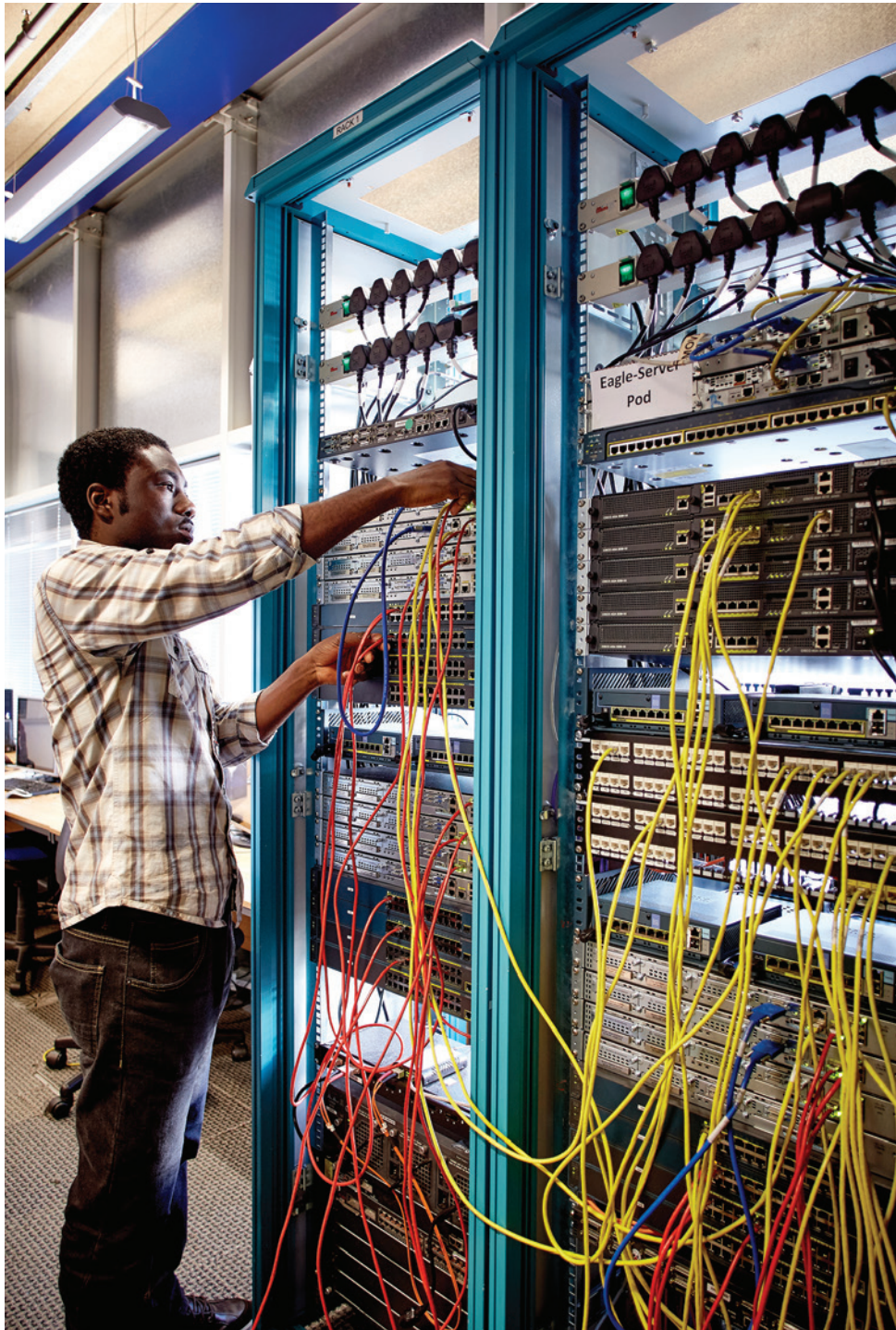
We enjoy strong academic and research links with business and industry, such as Morgan Motor Company, Westfield Sportscars and Aquila Racing Cars, and also work with globally respected technology partners.

You will benefit from the first-hand industry experience of our academic staff.

### When you attend an Applicant Visit Day you will have the opportunity to do the following:

- Visit the Bioenergy Lab.
- See how you could be building and competing in your own racing car by visiting the workshop where our Formula Student and iRacer cars are built.
- Get an introduction to the Computer-Aided Design (CAD) labs and design studios.
- Get an overview of our simulation tools.
- Visit our Mechanical Engineering lab.
- Visit our Knowledge-Based Engineering (KBE) lab.
- For electronic engineering, there will be practical sessions on electronic circuits and systems, and demonstrations of practical work such as the construction of circuits.





## SCHOOL OF COMPUTING AND DIGITAL TECHNOLOGY – Computing

**Location:** Millennium Point, City Centre Campus, B4 7XG (report to Level 2)

**Activity start times:** Session 1 – 9.30am or Session 2 – 1pm on Saturdays, 1pm on Wednesdays

Computing students are based at Millennium Point, a landmark building in central Birmingham with well-equipped workshops and laboratories to provide a link between theoretical learning and practice.

Many of our courses are accredited by the Institute of Engineering and Technology (IET), paving the way for you to become qualified as an Incorporated or Chartered Engineer.

The Faculty of Computing, Engineering and the Built Environment is a Cisco Academy Support Centre and instructor training centre, supporting the global Cisco Academy programme, as well as being a leading academy for Microsoft.

You will benefit from the first-hand industry experience of our academic staff.

PLEASE NOTE: As an applicant to a Computer Games Technology course, you will need to attend an applicant visit day for a short one-to-one interview before we can confirm your offer to join us.

**When you attend an Applicant Visit Day you will have the opportunity to do the following:**

- For Forensic Computing, you can view demonstrations of mobile phone forensics, hard drive diagnostics and face recognition.
- You will also have a tour of the School including our project, games and PC laboratories.
- For Computer Networks, demonstrations will include racks with routers, switches and hubs, and a Packet Tracer/OPNET simulator demo.



## SCHOOL OF COMPUTING AND DIGITAL TECHNOLOGY – Digital Technology

**Location:** Millennium Point, City Centre Campus, B4 7XG (report to Level 2)

**Activity start times:** Session 1 – 9.30am or Session 2 – 12.30pm on Saturdays, 1pm on Wednesdays.

Birmingham City University's Digital Technology courses offer access to advanced teaching facilities, including our new Media Centre at The Parkside Building on the City Centre Campus. The Centre is equipped with the latest industry-standard equipment, including five TV studios (including a MILO 'green screen' studio), all operating industry-standard tapeless digital workflow.

Further studios within Millennium Point and Birmingham Conservatoire are used for live sound and studio recording delivery on our specialist sound courses.

Our teaching staff comprises specialists in their respective fields, including academics and industry professionals, all of whom are perfectly placed to offer a wealth of experience and knowledge. You will also benefit from access to high-profile guest speakers from across the industry.

Our courses focus on the technical aspects of media and sound engineering for production, giving a wide range of opportunities for employment within the creative industries.

PLEASE NOTE: As an applicant to the Music Technology course, you will need to attend an Applicant Visit Day before we can confirm your offer to join us.

**When you attend an Applicant Visit Day you will have the opportunity to do the following:**

- Tour professional, industry-standard facilities, which include sound recording studios, and our electronic and specialist computing laboratories.
- Have an informal one-to-one meeting with one of our lecturers to find out more about our courses and what they can offer you.

## SCHOOL OF EDUCATION

**Location:** Wednesdays: Attwood Building, City North Campus, B42 2SU.

Saturdays: Seacole Building, City South Campus, B15 3TN.

**Activity start time:** 1pm on Wednesdays, 9am on Saturdays.

The School of Education and Social Work is one of the country's leading providers of education and teacher training and enjoys an enviable reputation for delivering the highest quality courses.

We offer a range of courses that explore children and childhood in contemporary society. These courses are designed to prepare you for a number of careers relating to babies, children and young people.

**When you attend an Applicant Visit Day you will have the opportunity to do the following:**

- You will receive an overview of the course, the module content, learning opportunities and assessment strategies.
  - Q&A with Head of Department and Programme Leaders.
  - Find out more about your future employment opportunities at a question and answer session with the Programme Director.
- Education Studies**
- Find out more about the course, what it involves and the careers it can lead to.
  - Take part in a practical workshop: looking at relevant, contemporary and thought-provoking film extracts. We will then make links between these extracts, our own experiences and understanding of education.

### Early Childhood Studies

- Take part in a practical workshop, Exploring Perceptions of Childhood, which will give you a taster of the sort of work you will be involved with on the course.
- Find out more about placements by hearing from current students about their experiences, and how they have helped them to put theory into practice.

### Working with Children, Young People and Families

- Take part in a taster session, where you will consider issues for children and families and their entitlements, giving you an idea of the type of work you will be involved with on the course.
- Find out more about placements by hearing from current students about their experiences, and how they have helped them to put theory into practice.

## SCHOOL OF ENGLISH

**Location:** The Curzon Building, City Centre Campus, B4 7BD

**Activity start times:** 10am on Saturdays, 1pm on Wednesdays

Study one of our flexible programmes at the School of English and you can be part of a vibrant academic community, enjoying inspirational tuition and the support of internationally and nationally renowned experts and writers.

In the 2016 National Student Survey, 100 per cent of BA (Hons) English students said they were satisfied with their course, while the Destination of Leavers from Higher Education survey showed that 95 per cent of our graduates were in full-time employment or further study within six months. At the heart of this success is our commitment to research-informed teaching: the School of English is an important research centre in linguistics, literature and creative writing and the latest assessment from the Research Excellence Framework (REF) in 2014 rated over three-quarters of research in the School of English as either 'internationally recognised' (3\*) or 'world-leading' (4\*).

You're supported by a richly stocked library, the electronic resources of which give you access to every printed book published in the UK between 1470 and 1800.

Our online learning environment, Moodle, offers the perfect platform to conveniently source, collate, refine and present the richness of information at your fingertips.

**When you attend an Applicant Visit Day you will have the opportunity to do the following:**

- Gain an insight into all four strands of our English degrees, all of which you will be able to sample in your first year.
- Gain an insight into literature by reading a short text and interpreting it, followed by a discussion.
- Produce a short piece of creative writing.
- Take part in a structured activity looking at how language works.
- Take part in a warm-up exercise in the Drama Studio.





## SCHOOL OF FASHION AND TEXTILES

**Location:** The Parkside Building, City Centre Campus, B4 7BD

**Activity start times:** Various start times. Interview required for some courses – visit [www.bcu.ac.uk/mysrs](http://www.bcu.ac.uk/mysrs) for more details.

Based at The Parkside Building, part of our City Centre Campus, the School of Fashion and Textiles provides extensive workshop space and the very latest in industry-standard equipment. You'll have access to a range of facilities within the School and Faculty, including IT CAD packages, and practice-based workshops for garment construction, printed textiles, embroidery and constructed textiles. If you're hoping to study one of our Fashion courses, or Fashion, Business and Promotion, you may have the opportunity to showcase your work at Graduate Fashion Week in London, the world's leading event for fashion graduates. There are placement opportunities at a range of companies, with previous students having gained experience with international brands such as Burberry, Warehouse, Iris Van Herpen, H&M, Victoria Beckham and Ted Baker.

If you're thinking of studying Textiles, you will have regular opportunities to showcase and engage with industry through projects and exhibitions, such as New Designers in London, and the annual trend pavilions which are shown at a number of national venues.

We have a diverse team of lecturers and visiting lecturers, with a mix of industrial, commercial, academic and craft skills. They will ensure you develop industry-focused and commercially-aware attributes that will increase your employability and outlook.

**When you attend an Applicant Visit Day you will have the opportunity to do the following:**

- Tour our professional industry-standard facilities.
- Meet staff and students, ask questions and find out more about how the course works in practice.
- Have a one-to-one interview with a tutor to discuss your portfolio and your career aspirations.

## NEW TECHNOLOGY INSTITUTE TWO-YEAR FASTTRACK

**Location:** University House, Ground Floor, 15 Bartholomew Row, Birmingham B5 5JU

**Activity start time:** 10am on Saturdays, 1pm on Wednesdays

The New Technology Institute, part of Birmingham School of Media, is located in University House, part of the City Centre Campus. Teaching takes place in our modern production studio, where you'll be provided with studio space to complete projects and a laptop with all the software you'll need for the duration of the course.

Our teaching staff have a wealth of experience in the video games and marketing industries, having worked with game developers such as Free Radical Design, Codemasters, Freestyle Games and EA Games, as well as leading companies such as the BBC, ITV, Sapient Nitro and Thinkjam. This makes them perfectly placed to offer you a wealth of experience and knowledge.

This course is a unique opportunity to attain a degree in just two years while gaining the experience needed to fill the skills gap in the emerging worlds of video games, mobile, social media and interactive entertainment. You will work both within your discipline and across different fields on real-world projects for well-known companies and organisations such as Sony and the BBC, ensuring you are highly employable by the end of your course.

**When you attend an Applicant Visit Day you will have the opportunity to do the following:**

- Attend a presentation, which gives detail about the Two-Year FastTrack courses.
- Take part in a group task.
- Have a one-to-one meeting with a New Technology Institute lecturer who will interview you (it will help if you can bring along some of your work in preparation for this).



## SCHOOL OF JEWELLERY

**Location:** School of Jewellery, Vitoria Street, B1 3PA

**Activity start times:** Various start times. Interview required for all courses – visit [www.bcu.ac.uk/mysrs](http://www.bcu.ac.uk/mysrs) for more details.

Having recently celebrated its 125th anniversary, the School of Jewellery has a long history of producing highly-skilled graduates in three specialist disciplines, who have progressed into employment as jewellers, horologists and gemmologists. The jewellery and watch industry provides diverse career prospects within the areas such as design, manufacturing, retail, restoration and curatorial practice. Self-employment is also a popular option.

We will prepare you for a successful career across a broad spectrum of opportunities within a diverse industry. You'll be encouraged to develop your own style, and will use various techniques, from freehand drawing and traditional bench skills to working with current Computer Aided Design software and exploring cutting edge technology. Creative practice, innovation and experimentation with materials and processes ensure that our graduates are leaders in the contemporary field.

The School of Jewellery's facilities include studio workshops with conventional style work benches and shared process workshops with a range of machines and equipment for a variety of manufacturing techniques. The Gemmology department of the School has moved into a fully equipped, purpose-built area within Birmingham's new Assay Office which provides an ideal location for students to engage with a specialist laboratory for analysis and valuation of gemstones.

PLEASE NOTE: Applicants for all courses within the School of Jewellery will attend a one-to-one interview during the Applicant Visit Day as a mandatory part of the application process. Details will be sent to you via email.

**When you attend an Applicant Visit Day you will have the opportunity to do the following:**

- Tour our professional industry-standard facilities, ideally located within Birmingham's landmark Jewellery Quarter.
- Have a one-to-one interview with a tutor to discuss your portfolio and your career aspirations.
- Meet staff and students, ask questions and find out more about how the course works in practice.



## SCHOOL OF LAW

**Location:** The Curzon Building, City Centre Campus, B4 7BD

**Activity start times:** 10am on Saturdays, 1pm on Wednesdays

At Birmingham City University's School of Law, we believe that a balanced view makes better legal professionals. It's why we don't just teach law, we advocate it; and why we don't just focus on professional practice, but actively break down barriers to social justice and human rights throughout the world.

We've been at the forefront of innovative law teaching for more than 40 years, and we offer you a unique experience. Whether you are on one of our American internships defending people on death row or part of our local and national pro-bono work that focuses on the vulnerable in our society, we give you amazing experiences outside of your comfort zone. Our American internships programme, for example, is the largest of its kind in the UK, and our Legal Advice and Representation Unit (LARU) provides you with the opportunity to work in the offices of Citizens Advice or other legal service providers, handling real cases dealing with real problems.

When you are participating in our leading, competition-winning mooted society, or practising in our purpose-built, state-of-the-art campus court rooms and virtual solicitors' office, you get to test yourself and go beyond your own expectations. From our strong links with the Birmingham Law Society and the four Inns of Court to our collaborations with local businesses, we ensure you get a rich and broad experience of law.

**When you attend an Applicant Visit Day you will have the opportunity to do the following:**

- Meet our current students who will tell you about our course, our mooted society, our international opportunities and life as a student in our School of Law.
- Experience a mock lecture on a contemporary legal issue.
- Get a practical insight into our courses by taking part in a mock hearing in one of our replica courtrooms.
- Get involved in an interactive seminar where you will be given an opportunity to work alongside current students and staff, giving you a feel of how it is to study in a small group session.
- Get involved in a question and answer session with staff and current students.

## BIRMINGHAM SCHOOL OF MEDIA

**Location:** The Parkside Building, City Centre Campus , B4 7BD

**Activity start times:** Session 1 – 10am or Session 2 – 12pm on Saturdays, 1pm on Wednesdays

Birmingham School of Media is located in our impressive media centre at The Parkside Building on the City Centre Campus. It is equipped with the latest industry-standard equipment, with five TV studios (including our MILO 'green screen' studio) all operating industry-standard tapeless digital workflow.

Our teaching staff comprises specialists in their respective fields, including academics and industry professionals, all of whom are perfectly placed to offer a wealth of experience and knowledge. You will also have access to high-profile guest speakers from across the industry.

A number of our courses are accredited by Creative Skillset on the strength of our professional capability and work with the media industry.

Courses at Birmingham School of Media focus on the creative aspects of media production and provide the opportunity to collaborate with students on our technical media courses, which are run by the School of Computing and Digital Technology.

**When you attend an Applicant Visit Day you will have the opportunity to do the following:**

- Tour our professional, industry-standard facilities which include four broadcast-ready TV studios, six radio studios and a suite of photography studios.
- View a presentation which provides details of the BA (Hons) Media and Communication course, as well as the specialist pathways in Event and Exhibition Industries, Journalism, Music Industries, New Media, Public Relations, Radio and TV.
- Have a one-to-one interview with a Birmingham School of Media lecturer to discuss your work and career aspirations (we will ask you to bring along some of your work in preparation for this).
- Meet staff and students, ask questions and find out more about how the course works in practice.

## SCHOOL OF SOCIAL SCIENCES

**Location:** The Curzon Building, City Centre Campus, B4 7BD

**Activity start times:** 10am on Saturdays, 1pm on Wednesdays

We provide a stimulating and progressive environment for the study of Criminology, Psychology and Sociology. We offer a wide range of full-time, part-time and professionally aligned courses awarded by the British Psychological Society.

We are the only university in the UK to hold an annual debate with a high-security prison, HMP Grendon – providing you with a rare and unique insight into the British criminal justice system. You will also learn first-hand from inspiring visiting professionals and a vibrant, research-led teaching community.

**When you attend an Applicant Visit Day you will have the opportunity to do the following:**

- Have an introduction to the course, find out what you will learn and discover what careers your degree could lead you to.
- Take part in a question and answer session with staff and current students.
- See our new teaching facility, The Curzon Building, located at our City Centre Campus.

### **Criminology**

- Gain an insight into the world of criminology by attending a taster lecture.
- Attend a 'pathway workshop' alongside current students to explore interesting topics in your chosen subject area.

### **Sociology**

- Find out about the different sociology courses plus our placement and overseas exchange opportunities, and our range of Sociology modules.
- Take part in Sociological Imagination, a unique teaching session.

### **Psychology**

- Get a taste of Psychology by listening to an exciting taster lecture.
- Get involved in interactive activities allowing you to meet and work alongside other prospective students and current staff, giving you a feel of what it is like to study in small groups.

## SCHOOL OF HEALTH SCIENCES

**Location: Biomedical Engineering:** Millennium Point, City Centre Campus, B4 7XG (report to Level 2)

**Biomedical Science:** Seacole Building, City South Campus, B15 3TN

**Sports:** Edgbaston Cricket Ground, Warwickshire, B5 7QU  
(For full travel directions, visit: [www.edgbaston.com/info/travel](http://www.edgbaston.com/info/travel))

**Activity start times:** 10am and 1pm Wednesdays and Saturdays

The School of Health Sciences has been established to accommodate our growing biomedical science and sport courses portfolio.

As part of the development of our City South Campus in Edgbaston, we are constructing new facilities, giving us world-class research and teaching spaces.

Studying at Birmingham City University will mean you have access to some of the most advanced laboratories and training equipment available. Our teaching takes an enquiry-based approach and uses a variety of interactive teaching methods to suit all styles of learning.

**When you attend an Applicant Visit Day you will have the opportunity to do the following:**

### **Biomedical Sciences and Biomedical Engineering**

- Experience first-hand a day in the life of a Biomedical Engineer or a Biomedical Scientist.
- Take part in short interactive sessions based on real life scenarios and case studies.

### **Sports**

- Introduction and welcome by our Head of Department.
- Individual Sport course activities - including tour and Clive Marks kit sizing opportunity.



## SCHOOL OF VISUAL COMMUNICATION

**Location:** The Parkside Building, City Centre Campus, B4 7BD

**Activity start times:** Various start times. Interview required for all courses – visit [www.bcu.ac.uk/mysrs](http://www.bcu.ac.uk/mysrs) for more details.

At the School of Visual Communication, our degree courses give you the opportunity to develop the skills and aptitudes that you'll need to succeed in today's fast-paced creative industries.

Our degrees allow you to specialise while still experiencing the wider spectrum of visual communication subjects. You'll be based in The Parkside Building, part of our City Centre Campus, a creative learning environment that boasts outstanding traditional and digital facilities, from our traditional print rooms, photographic studios and darkrooms to our animation studios and numerous large contemporary moving image resources.

All of our academic staff engage in research and professional practice, and will offer years of industry experience and insight. You will also enjoy engagement with many of our industry partnerships, including McCann Erickson, Live Nation and the Association of Illustrators.

With nearly 6,000 of the University's 24,000 students enrolled on creative and cultural courses, we are one of Britain's leading providers of graduate talent to these industries.

PLEASE NOTE: Applicants for all courses within the School of Visual Communication will attend a one-to-one interview during the Applicant Visit Day as a mandatory part of the application process. Details will be sent to you via email.

**When you attend an Applicant Visit Day you will have the opportunity to do the following:**

- Tour our professional industry-standard facilities and gain an understanding of where a degree in Graphic Communication, Film and Animation, Design for Performance, Illustration, Photography and Commercial Photography can take you.
- Meet current students, ask questions and find out more about how the course works in practice.
- Have an informal interview with a tutor to discuss your portfolio and future career ambitions.



# About our campuses

Our continuing investment into our campuses ensures our students have access to a fantastic learning environment, with £260 million being invested into improving our facilities.

Our most recent development, The Curzon Building, opened its doors in September 2015. Part of our City Centre Campus, it forms a new focal point for the University, offering excellent student support facilities and a superb new library.

We are also investing £41 million in new facilities at our City South Campus, with the aim of bringing together our Health, Education and Life Sciences courses together into one purpose-built campus.

## CITY CENTRE CAMPUS

### Millennium Point

This landmark building is part of one of the largest regeneration zones in the UK. It is home to courses from our Faculty of Computing, Engineering and the Built Environment, and includes facilities such as noise and vibration cells, a robotics laboratory and fantastic recording facilities, including a vintage mixing desk. Our £4 million purpose-built Birmingham School of Acting features 11 studios containing specialist acoustic panelling, sprung floors and a large performance studio regarded as a benchmark for drama training facilities in the UK.

### The Parkside Building

The Parkside Building is one of our latest facilities, demonstrating our continuing investment. Home to our design and media courses, it's the perfect place for workshops and teaching spaces, as well as the state-of-the-art centre for the advanced teaching facilities of Birmingham School of Media.

Facilities include cutting-edge photography studios, four industry-standard TV studios, editing suites and a green screen MLO studio, providing the largest concentration of TV facilities to be found between London and Salford. The building is also right on the doorstep of Eastside City Park, providing an outside space for you to enjoy.

### The Curzon Building

The Curzon Building is the latest cutting-edge facility to join our City Centre Campus, and is home to our Business, Law, English and Social Sciences courses. The £63 million development, which opened its doors in September 2015, provides a new library, IT and student support facilities, and lots of informal 'break out' areas. Our Students' Union has also moved to The Curzon Building, now located in the restored Victorian pub, The Eagle and Ball. All of this ensures a greater campus feel and a 'one stop shop' for all student needs.

## CITY NORTH CAMPUS

At our City North Campus, a few miles north of the city centre, our Education students benefit from several realistic mock classrooms and contemporary facilities. The PGR (Postgraduate Research) Hub boasts new equipment such as PCs, laptops, lockers and meeting rooms. The site is also home to our Doug Ellis Sports Centre, which is open to students from all faculties and the wider community.

All teaching is due to have been relocated to the City Centre or City South campuses by January 2018.

## CITY SOUTH CAMPUS

All health and social care students are based on one state-of-the-art campus in Edgbaston. Our realistic learning environment includes an operating theatre, hospital wards, a virtual radiotherapy suite and a fully equipped midwifery skills/birthing room.

We are investing £41 million in new facilities on this site including specialist laboratories for a newly created School of Life Sciences, as well as a new home for the School of Education complete with replica classrooms, due to open during the 2017/18 academic year.

## MARGARET STREET (BIRMINGHAM SCHOOL OF ART)

Ideally located in the city centre, next to the city's museum and art gallery, our Margaret Street campus is home to Birmingham School of Art. Our facilities include light and airy studios, a gallery and installation spaces, allowing you to display your work to audiences.

You'll have access to cutting-edge workshops for wood, metal, plaster, digital media and much more. The School also boasts industry-standard resources and equipment, including soldering hearths, polishing machines, lathes and a specialist fine art library.

The building itself has won numerous awards for the restoration of its spectacular architecture, which mixes contemporary workspaces with the original stained glass windows and mosaic floors.

## VITTORIA STREET (SCHOOL OF JEWELLERY)

Our School of Jewellery, the largest jewellery school in all of Europe, stands right at the heart of Birmingham's historic Jewellery Quarter, where much of the jewellery made in Britain today is manufactured. This ensures industry contacts and first-hand experience are right on your doorstep.

The multi-award-winning building is an inspiring place to learn your craft. Housing traditional-style workshops, teaching and exhibition accommodation, you'll have access to a specialist library, industry-standard equipment, studio workshops and a gemmology laboratory.

Our airy, light-filled atrium, with floor-to-ceiling windows, also gives you the chance to see our students honing their skills with the very latest equipment, while our exhibition hall and bookable space provides you with the opportunity to display and showcase your work.

# City South travel directions

## ROAD

There are multiple road improvements taking place in Birmingham city centre. These directions and map may be subject to change at short notice. There is very limited car parking at City South Campus, with space reserved for those with limited mobility. We would advise that you use public transport if possible.

For free on-site parking at City South Campus, please use the postcode B15 3TN when using satellite navigation systems.

For free parking at Edgbaston High School for Girls, a three-minute walk away, please use the postcode B15 3TS for satellite navigation systems.

For parking at Broadway Plaza, a 15-minute walk away, please use the postcode B16 8LP for satellite navigation systems. More information can be found at: [www.broadway-plaza.co.uk/information/parking](http://www.broadway-plaza.co.uk/information/parking).

When walking from Broadway Plaza to our City South Campus, exit Broadway Plaza and head towards the underpass facing the Park Regis Hotel. Exit the underpass at the fourth exit (opposite Lloyds Bank) onto Calthorpe Road.

Continue down Calthorpe Road for 800 metres until you arrive at St George's Church on your right hand side. Turn right past the church and head down Westbourne Road. Our City South Campus is approximately 500 metres along on your right-hand side.

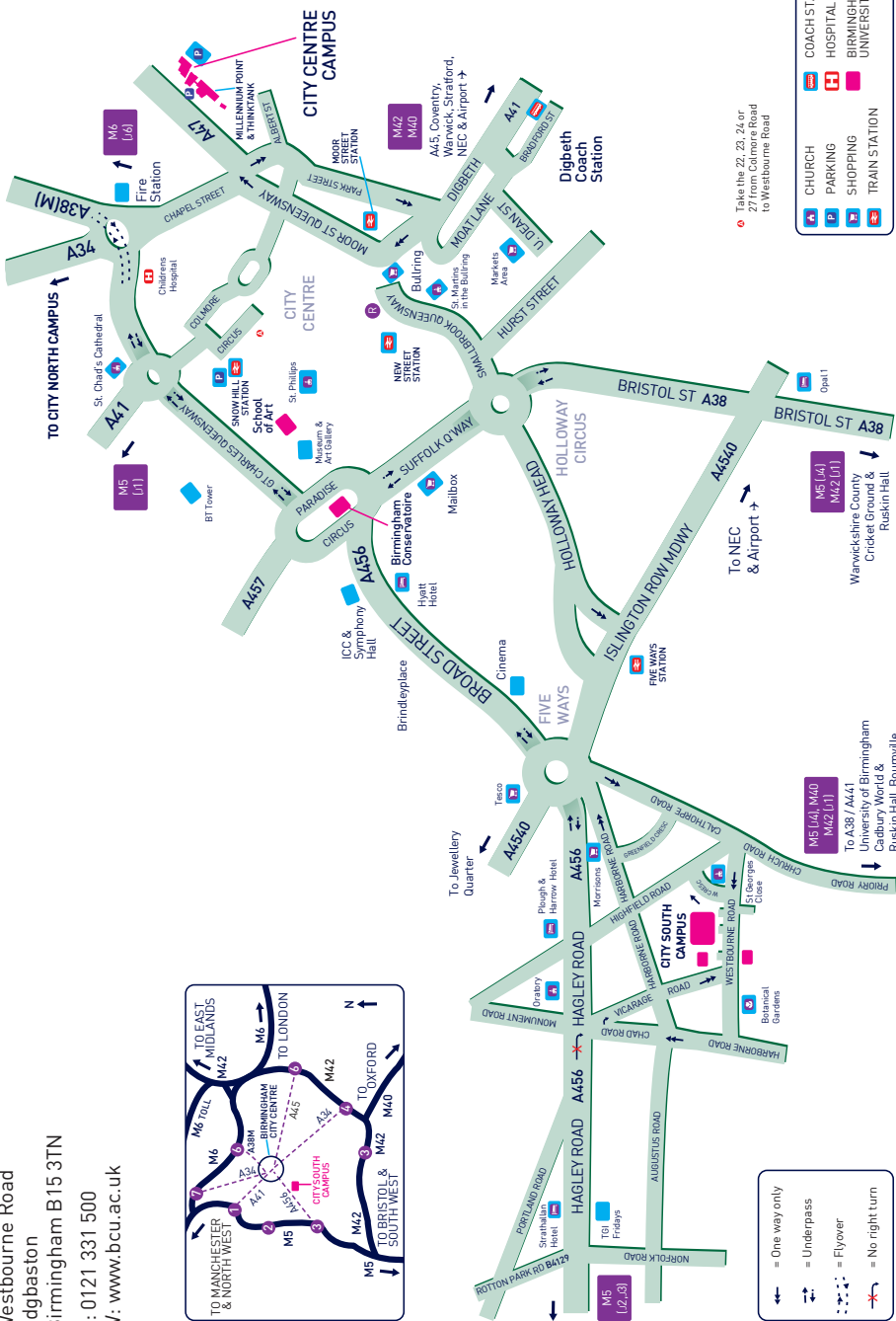
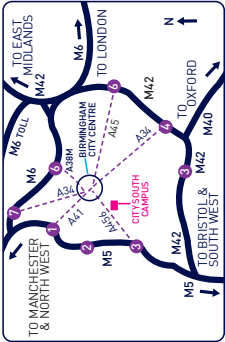
## RAIL

Trains to Five Ways station depart from Birmingham New Street station every 10 minutes and take approximately five minutes. City South Campus is about a 10 minute walk away. Turn left out of the station, walk up to Five Ways roundabout and turn left down Calthorpe Road. Turn right onto Westbourne Road and we are about 300 metres along on the right.

## BUS

Take the 22, 23, 24 or 29 from Livery Street (adjacent to Snow Hill station) or Moor Street Queensway in the city centre. This takes you directly to Westbourne Road and there is a bus stop opposite the campus.

CITY SOUTH CAMPUS  
Westbourne Road  
Edgbaston  
Birmingham B15 3TN  
T: 0121 331 500  
W: [www.bcu.ac.uk](http://www.bcu.ac.uk)





# City Centre travel directions

## ROAD

For satellite navigation systems please use B4 7AP

Our City Centre Campus is easy to get to from all main routes into the city – simply follow the brown tourist signs showing Millennium Point. The nearest motorways are the M6, M5, M40 and M42.

## From M6 South or North-West

Leave the M6 at Junction 6 and follow the A38(M). Follow signs to 'City centre, Bromsgrove [A38]'. Keep to the left and take the second exit (signposted 'Ring Road') up to Dartmouth Circus. At this roundabout, take the first exit. Travel down the A4540 and at the next roundabout turn right down Jennens Road. Follow the signs for the NCP Millennium Point car park.

## From M5 South-West

Leave the M5 at Junction 3 and travel towards Birmingham city centre along the A456 (Hagley Road) for five miles to the Five Ways roundabout. Keep in the outside lane and go under the roundabout into Broad Street using the underpass. At the large roundabout (Paradise Circus), take the second exit (Great Charles Queensway). Go through one underpass and over one flyover. After going over the flyover, indicate left and drive up to the Dartmouth Circus

roundabout where you take the third exit. Travel down the A4540 and at the next roundabout turn right down Jennens Road. Follow the signs for the NCP Millennium Point car park.

## From M40 Oxford and South

Turn off on to the M42 and travel north towards the M6. Travel north on the M6 leaving at Junction 6. (Read directions 'From M6 South or North-West').

## From M42 East Midlands

Join the M6 heading towards Birmingham Central and leave the M6 at Junction 6. (Read directions 'From M6 South or North-West').

## RAIL

Millennium Point is situated about 15 minutes from Birmingham New Street station, where there are regular train services to and from all parts of the country. Trains run every half hour from London Euston – the journey time is approximately 100 minutes. Follow directions from New Street station to Moor Street station. Continue along Jennens Road and Millennium Point will be on your right-hand side.

## Walking route from Moor Street station

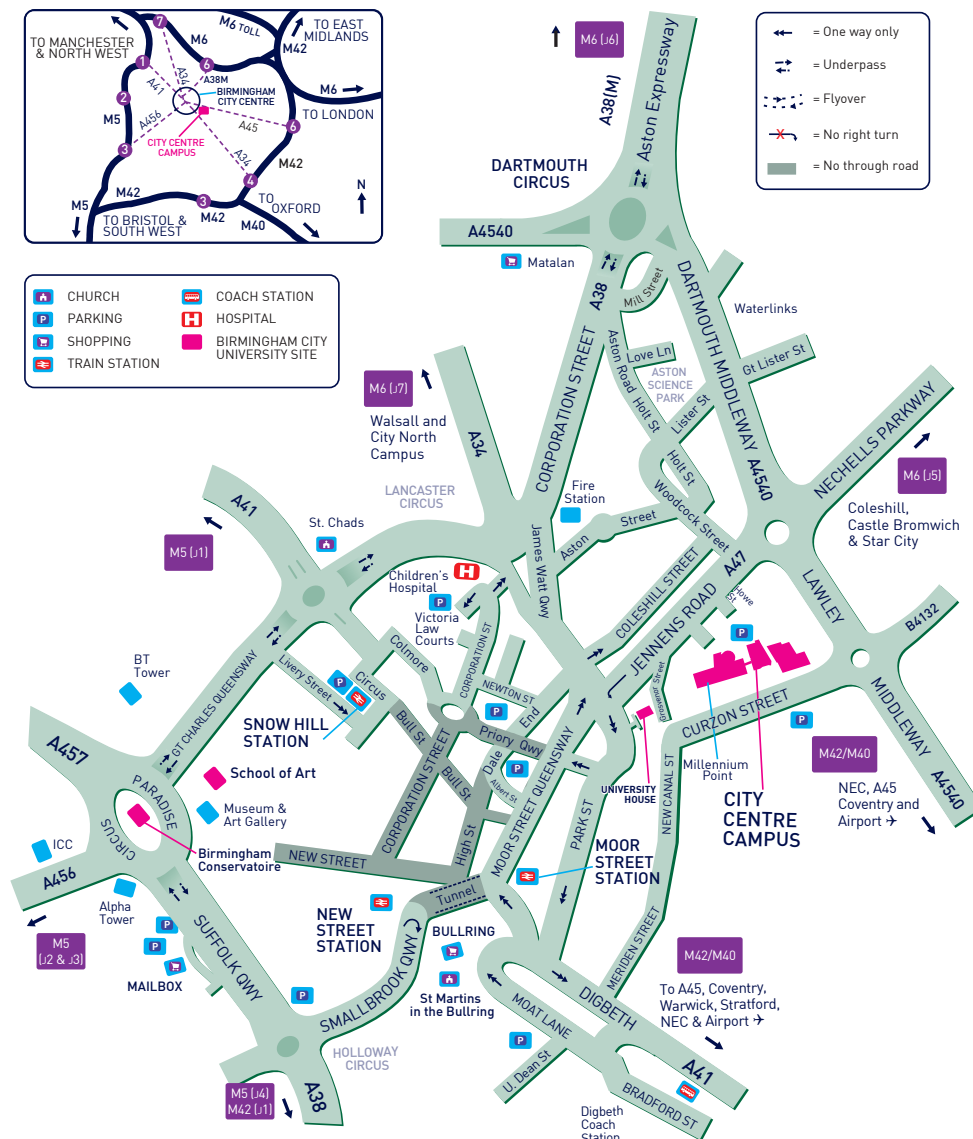
Exit the main entrance of the train station and turn right. Continue along Jennens Road and Millennium Point will be on your right-hand side.

## CITY CENTRE CAMPUS

**Millennium Point**  
Curzon St  
Birmingham B4 7XG  
T: 0121 331 5000  
W: www.bcu.ac.uk

**The Parkside Building**  
5 Cardigan Street  
Birmingham B4 7BD

**The Curzon Building**  
4 Cardigan St  
Birmingham B4 7BD



# City North travel directions

Once you arrive, head to the ground floor of Attwood building to check-in and register your attendance (for Education courses only).

## ROAD

For satellite navigation systems please use **B42 2SU**

### From M6 South or North-West

Leave the M6 at Junction 7 and follow the A34 (Walsall Road) towards Perry Barr. After about 2.5 miles when the Greyhound Stadium is on your left, filter left in the outer of the two inside filter lanes. When you arrive at Aldridge Road [A453], take a left ready to take the first right into Wellhead Lane. The first right on Wellhead Lane is the entrance to the student car park, while all other car parks are accessed by means of Franchise Street which is further down on your right.

### From M5 South-West

Leave the M5 at Junction 1 and travel towards Birmingham city centre along the A41 for about 0.5 miles before forking left along the A4040 (Outer Ring Road) towards Perry Barr. After about 2.5 miles you will arrive at the main Perry Barr roundabout. Go straight over this roundabout and then take the first left into Wellhead Lane. The City North Campus is now on your left and the staff car parks are at the end of Franchise Street which is the first turning on your left. To access the student car park, travel further up Wellhead Lane and the entrance is on your left.

### From M40 Oxford and South

Turn off on to the M42 and travel west towards the M5. Travel north on the M5 leaving at Junction 1. (Read directions 'From M5 South-West').

### From M42 East Midlands

Join the M6 heading towards Birmingham Central and leave the M6 at Junction 7. (Read directions 'From M6 South or North-West').

## RAIL

Trains to Perry Barr station (approximately every 30 minutes) leave from Birmingham New Street station, where there are regular train services to and from all parts of the country. Trains run every half hour from London Euston – the journey time is approximately 100 minutes.

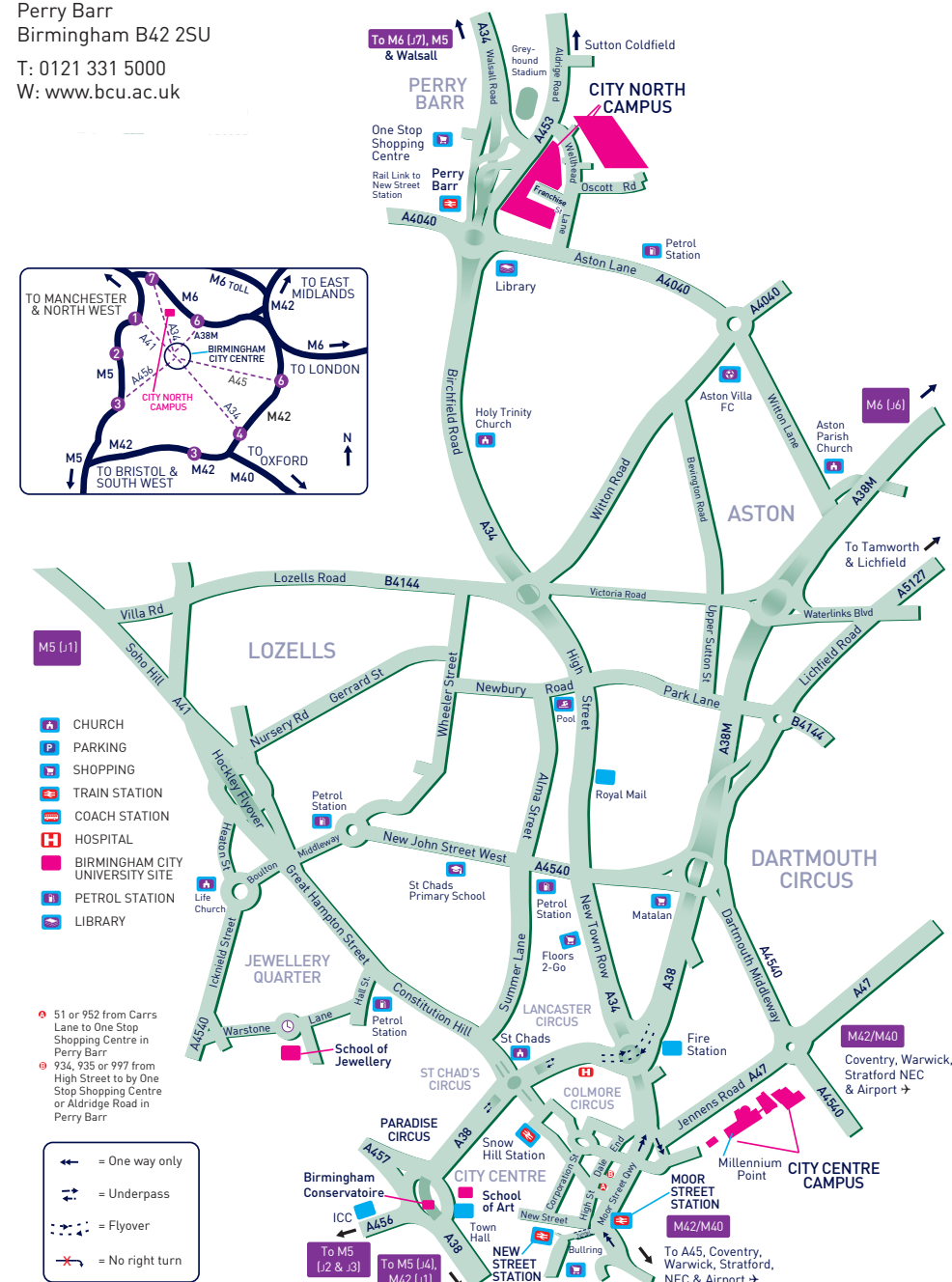
## BUS

Take the 51 or 952 bus from Lower Bull Street in the city centre and get off at the One Stop Shopping Centre in Perry Barr. From there, use the pedestrian crossing to reach the campus. Alternatively, get the 33, 934, 935 or 997 bus from Lower Bull Street and get off either at the One Stop Shopping Centre or on Aldridge Road.

## CITY NORTH CAMPUS

Franchise Street  
Perry Barr  
Birmingham B42 2SU

T: 0121 331 5000  
W: www.bcu.ac.uk







# Birmingham School of Art

## travel directions

### ROAD

#### From M6 South or North West

Leave the M6 at Junction 6 and follow the A38(M). Follow signs to 'City Centre, Bromsgrove A38'. As you come off the flyover keep left on St Chads Queensway/A4400. Follow the A4400 under the railway bridge, where it becomes Great Charles Street, Queensway.

After about 350 metres Margaret Street is on your left; turn in here. Birmingham School of Art is on your left, directly after the junction with Cornwall Street. There is metered parking around the building.

#### From M5 South West

Leave the M5 at Junction 3 and travel towards Birmingham City Centre along the A456 (Hagley Road) for five miles to Five Ways roundabout. Take first left onto Ladywood Middleway/A4540. At the next roundabout, take first exit onto Icknield Street/A4540. After approx 300 meters turn right into Carver Street, then first left into Warstone Lane, continue along Warstone Lane (which becomes Hall Street) until you get to the junction of Great Hampton Street/B4100. Turn right and follow Great Hampton Street/Constitution Hill for half a mile. Take a slight right on Great Charles Street Queensway/A4400.

After about 350 metres Margaret Street is on your left; turn in here. Birmingham School of Art is on your left, directly after the junction with Cornwall Street. There is metered parking around the building.

#### From M40 Oxford and South

Turn off on the M42 and travel north towards the M6. Travel north on the M6 leaving at Junction 6. (Read

directions 'From M6 South or North West').

#### From M42 East Midlands

Join the M6 heading towards Birmingham Central and leave the M6 at Junction 6. (See 'From M6 South or North West').

### RAIL

Birmingham School of Art is situated about ten minutes walk from both Birmingham New Street and Snow Hill stations, from where there are regular train services to and from all parts of the country. Trains run every half hour from London Euston to New Street Station - the journey time is approximately 100 minutes.

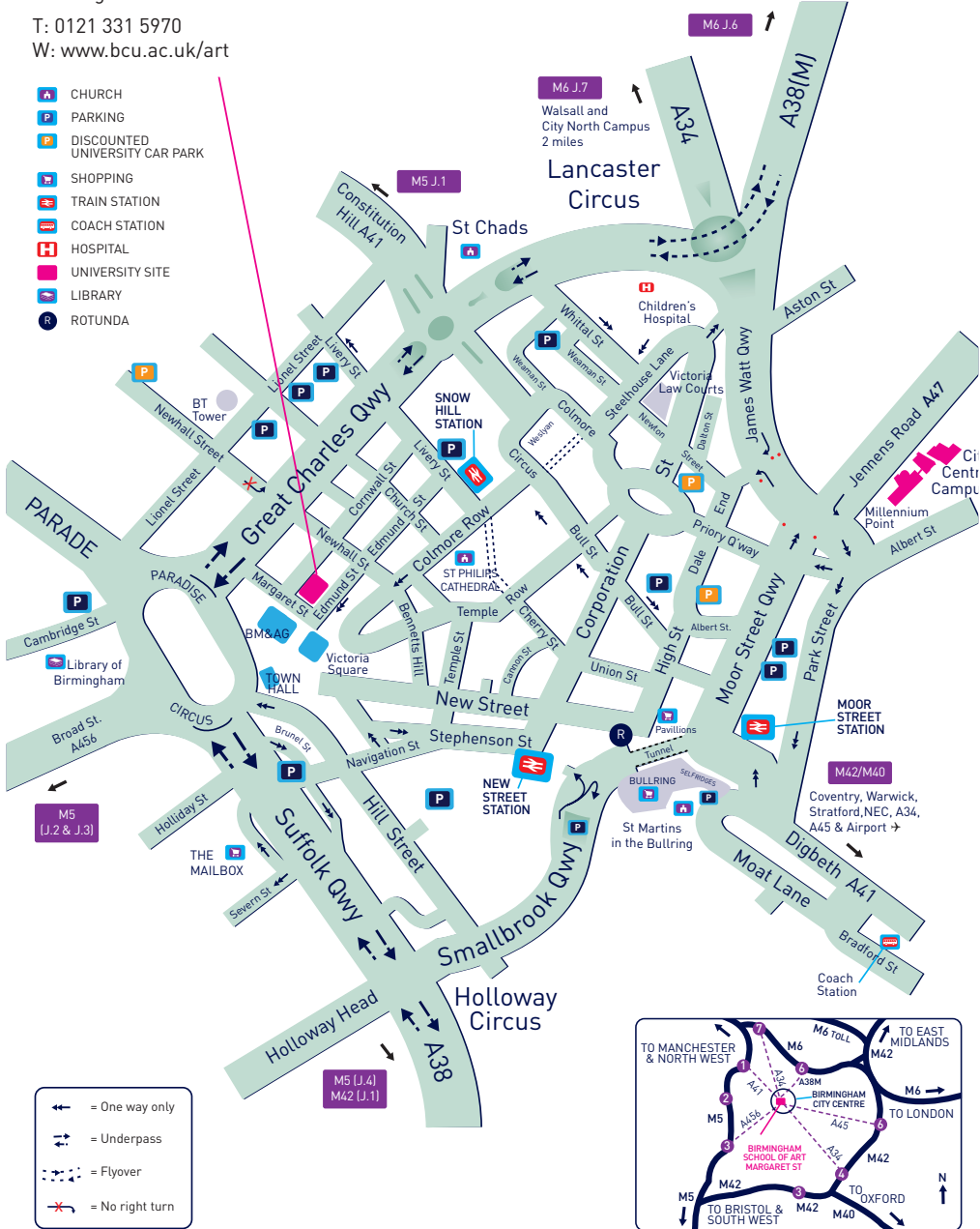
#### Walking route from New Street station

Exit the station onto Hill Street. Turn right and continue walking up Hill Street until you get to Victoria Square. Keep going alongside the Town Hall through Victoria Square until you see the Birmingham Museum and Art Gallery on your right. Walk past the main entrance and turn right onto Edmund Street. Walk along until you see Margaret Street (first left). Birmingham School of Art is situated on the right hand side.

#### Walking route from Snow Hill station

Exit the station onto Colmore Row. Turn right and follow Colmore Row towards the Council House. Cross Newhall Street and continue along Colmore Row until you get to Eden Place on your right. Walk down Eden Place and cross Edmund Street, turn left then first right onto Margaret Street. Birmingham School of Art is on your right.

BIRMINGHAM SCHOOL OF ART  
Margaret Street  
Birmingham B3 3BX  
T: 0121 331 5970  
W: [www.bcu.ac.uk/art](http://www.bcu.ac.uk/art)



## DISCLAIMERS

**SUPPORTING YOUR ABILITIES** The University welcomes applications from disabled people. We strongly encourage disclosure of your disability so we can advise and support you more effectively from the earliest point during your time at university. Our staff are experienced advisers and offer a confidential service.

**For more information, please contact our Disability Support team:**

+44 (0) 121 331 5588

[disability@bcu.ac.uk](mailto:disability@bcu.ac.uk)

[www.bcu.ac.uk/student-services/disability](http://www.bcu.ac.uk/student-services/disability)

**Join our online community:**



/birminghamcityuniversity



@MyBCU



mybcu

## IMPORTANT INFORMATION

**EMERGENCIES AND FIRST AID** Our Security team can be contacted on +44 (0) 121 331 6325. If you require first aid, please ask for assistance from a member of staff who will be wearing a blue Birmingham City University shirt.

**FIRE ALARM** If you hear a fire alarm, please leave by the nearest fire exit as quickly as possible. Follow any instructions given by our staff.

**EQUAL OPPORTUNITIES** We promote equality of opportunity in respect of every aspect of our provision. University policy and practice will seek to provide an environment that's free from discrimination against students, staff and others. The University and its staff will ensure that all prospective students are treated solely on the basis of their merits, abilities and potential. For full details of our Equal Opportunities policy please visit [www.bcu.ac.uk](http://www.bcu.ac.uk).

**DIVERSITY** The University prides itself on being a diverse community and so seeks to create a study environment that is free from harassment and one that fosters tolerance. The dignity of all students is to be preserved regardless of sex, sexual orientation, racial or ethnic background, religion or disability.