



Industrial placements

**Get a head
start in
your career!**

Enhance your employability with an industrial placement

The Faculty of Technology, Engineering and the Environment, part of Birmingham City University, consists of four schools, all with expert lecturers and industry-standard facilities, enabling you to develop the knowledge and skills necessary for a successful career in our technology driven society. Collaboration with industry is at the heart of our teaching, and we work hard to ensure you have access to opportunities such as 'live' projects and industrial placements, which can give you a vital head start in your career.

We understand that in today's competitive jobs market, more and more employers expect new graduates to have substantial experience of the workplace. Completing an industrial placement is an excellent way to put what you have learned on your course into practice and develop new skills relevant to your future career.

This experience can prove to be a significant advantage when seeking full-time employment – indeed, many of our students end up returning to the company where they undertook their placements as permanent employees after they graduate.

On average, our placement students secure a salary in their first job eight per cent higher than those who did not undertake a placement, as well as securing better results in their degrees.

Types of placement

We accommodate placements on as many of our courses as possible, both undergraduate and postgraduate. The length of placements varies between courses, from a few weeks to a full academic year.

A 'Sandwich Degree' is an undergraduate degree that includes a year in industry, completed between your second and third years of the course. It involves at least 36 weeks' full-time successful work experience. Furthermore, where a full-time undergraduate student starting in 2012, opts to extend the normal length of a Bachelor's degree by an additional year in order to take a full-year work placement there will be no fee for the additional placement year.

Other types of industrial placements are open to undergraduate and postgraduate students, which may be more flexible and can be just as valuable.

Finding a placement

Finding a good placement opportunity requires effort, organisation and enthusiasm, but you will have plenty of support. Our Placements Office maintains and regularly updates an online listing of opportunities and vacancies. Our Careers Service can direct you to appropriate support literature, and assist you in producing your CV, covering letters and application forms.

During and after the completion of your placement year our Placements Office confirms all the Health and Safety arrangements pertaining to your placement, organises progress reviews and facilitates your assessments.

Our students have worked with organisations such as GlaxoSmithKline, O2 Telefónica, Willmott Dixon, Bentley Motors Ltd and the International Federation of the Phonographic Industry, just to name a few. Read our case studies in this brochure and learn more about what some of them have to say and how valuable they found the experience to be.

For more information on our placements programme, including eligibility, frequently asked questions, the dedicated support we have on offer and more case studies, visit our website www.bcu.ac.uk/tee/placements

“My placement has not only helped me develop my work skills, but my personality. I believe that placements are an invaluable tool which help you learn and grow in many ways. Academic study is needed but practical application teaches you twice as fast.”

Max Marriott

Embedded Systems Tester at MIDAS, part of
The Music Group BSc (Hons) Music Technology

Birmingham School of the Built Environment offers a range of courses in surveying, construction, property, architectural technology and planning, accredited by organisations such as the Royal Institution of Chartered Surveyors and the Royal Town Planning Institute. Our innovative collaboration with Birmingham City Council's Urban Design Team has provided placements and project work opportunities, some directly influencing Council policies.

"Willmott Dixon believes such initiatives are essential as it is through developing young people that the company will succeed in the future. Our relationship with Birmingham City University is really important. We are also working with them on the research front and are funding a research studentship to advance our thinking about Building Information Modelling."

Peter Owen, Managing Director for the Midlands
Willmott Dixon

JESSICA VAN RENSBURG

BSc (Hons) Building Surveying 2013



Jessica undertook a year in industry during her course, working for one of the UK's largest privately-owned capital works, regeneration and support services companies, Willmott Dixon. Her course uses problem-based learning to allow students to identify technical problems within a complex legal, social and economic environment, and learn to provide effective solutions to a wide range of property problems. Her placement enabled her to apply that learning to a real project.

"Willmott Dixon has given me the opportunity to work on site where this practical knowledge will expand my appreciation of construction enormously. This will be a fantastic boon to my career."



Founded in 1852, today Willmott Dixon employs around 2,600 people and in 2010 had a turnover of just under £1 billion. It is at the forefront of innovation with an ambition to create sustainable space for people, businesses and communities to thrive in. Willmott Dixon has

made a significant commitment to Birmingham School of the Built Environment by providing one fully-funded placement opportunity, plus six internships.



PAVANDEEP FLORA

MA Environmental and Spatial Planning 2012



Accredited by the Royal Town Planning Institute, Pavandeep's course adopts a knowledge-centric approach to thinking, acting and social process across the broad spread of environmental and spatial planning, reflecting the demand for qualified personnel in this area. For Pavandeep, a short placement with Birmingham City Council's Planning and Regeneration Department was the perfect way to combine theory and practice.



Birmingham City Council's Planning and Regeneration Department is at the forefront of Birmingham's transformation into a modern, vibrant international city, which today boasts many award-winning developments. Its role is to encourage and guide development that will help make Birmingham one of the world's top cities. Planning and Regeneration has an excellent track record of involving young people in the future development of the city, including by offering work experience placements to university students on relevant courses.

"It was only during my MA that I realised the difficulty in applying theory into practice without industry experience. The placement will enable me to network with professionals and gain the confidence to utilise the skills I have acquired to develop a career."

BETTER EMPLOYMENT PROSPECTS

Students who have experience of work through placements are significantly more likely to secure graduate level employment when they complete their studies. Many placement students impress their employers to the extent that they are offered a job when they complete their studies.

"I recognise the value of high quality work experience placements. These help graduates gain the experience they need to increase their employability potential."

Waheed Nazir, Director of Planning and Regeneration
Birmingham City Council

"We are delighted to have the opportunity to partner with Birmingham City University as one of our local universities in this project. We consider this to be beneficial to all parties."

Julie Smith, Principal Planning Support Manager
Birmingham City Council

Our **School of Computing, Telecommunications and Networks** is one of the leading academies for Apple, Microsoft, SAS and Cisco Systems. We deliver computing-related courses including computer science, software engineering, information systems, e-business technologies, electronics, embedded systems, web technologies, telecommunications, networking, security and forensic computing.

KALPESH PRAJAPATI

BSc (Hons) Computer Networks 2012



Kalpesh joined O2 during the Sandwich year of his course to broaden his understanding of networks. He worked with the IP Network Build team for five months and then seven months with the IP Networks Design team. During this time he gained experience in a number of key areas, including cabling and security, IP design and configuration and broadband.

Part of the Telefónica O2 Europe group, O2 UK is a leading provider of mobile and broadband services to consumers and businesses in Britain. Formed in 2001 following the demerger from British Telecom of its former mobile business, BT Wireless, O2 was ranked sixth in the 'Best Companies to Work for 2008' list.

"I just wanted to pass on my thanks to Kalpesh for the professional manner in which he managed and handled an issue. Kalpesh ensured that he owned the problem and managed expectation through to completion. Understanding the importance of resolving the issue, he worked a number of additional hours and only left site once the issue had been fixed."

Neeraj Bahal, Principle Engineer, Network Security, O2

"It was good working with the best engineers at O2 and learning how everything works in the real world. Along with this I have gained experience in many aspects of networks: how they operate and are maintained, and all the processes that are carried out before implementation."

PAUL MURPHY

BSc (Hons) Computer Networks 2013



Paul's course focuses on equipping students with the skills to design, implement and evaluate identification systems, data capture systems and communications networks and their associated security protocols within a business environment. But it was his placement that made all the difference in job interviews and gave him the opportunity to join the IT Graduate Scheme at Cisco.



ITCONTACT Ltd is a growing business based in Birmingham. The company primarily provides network administration and IT support for small to medium sized business within the Midlands. It also provides IT services to the NHS, installation work, CCTV work and websites.

"We found having a placement student from Birmingham City University very advantageous to us. The main reason for this was that we knew we were getting a student with a very good level of intellect and technical ability, who we were quickly very comfortable with representing our company with key clients. On their placement, students are very keen to gain as much information as they can whilst working for us in the IT industry and this enthusiasm and aptitude tends to reflect well on your company."

Paul Hartland, Managing Director, ITCONTACT Ltd

"Working for a growing company as part of a small team meant I was exposed to a huge range of technologies, scenarios and networking situations that I would never experience in the University classroom. As a result, my experience from my placement year has been discussed to a much greater length than my university studies when I have been for job interviews. I know that if it wasn't for the experience gained from doing a placement year, I would not have been selected to join the IT Graduate Scheme at Cisco."

SAM GOODMAN

BSc (Hons) Computer Networks 2013



Sam Goodman spent his industrial placement year working in a full-time position for GlaxoSmithKline (GSK), one of the largest pharmaceutical companies in the world. His role has focused on incident and problem management, with duties ranging from assisting a single client to observing network performance in a whole building of users. Some of Sam's cases required off-site visits and 'hands-on' work such as troubleshooting / replacing specialised hardware.



Headquartered in the UK, GlaxoSmithKline (GSK) is a science-led global healthcare company that specialises in developing innovative medicines and products for a global market. GSK researches medicines and vaccines and develops treatments for major disease areas such as asthma, cancer and diabetes, as well as for the World Health Organization's priority diseases – HIV/AIDS, tuberculosis and malaria.

"A placement year is valuable because of the information and skills which are acquired from the exposure to a production environment. Any developed skill sets can then be applied to your CV which may greatly strengthen the chance of a career."

Neil Churchill, Network Operations Manager UK
GlaxoSmithKline

"I have found myself working within an environment that supports people globally at hundreds of GSK sites. I can see the great experience, work ethic and knowledge that I have been able to gain, let alone the other benefits that come with a full-time job. The vast amount of knowledge gained is invaluable to me and really puts my university material in perspective. I would always recommend a placement year."



The **School of Digital Media Technology** offers technology-based multimedia courses in film, special effects, sound and music and multimedia technology. Our fantastic facilities include a film set, multi-track recording studios, postproduction facilities, and several hundred multimedia stations.

CHRISTOPHER SAVVA
BSc (Hons) Sound Engineering and Production 2010



IFPI (International Federation of the Phonographic Industry) represents the recording industry worldwide with some 1400 members in 66 countries and affiliated industry associations in 45 countries. IFPI works to promote the value of recorded music, safeguard the rights of record producers and to expand the commercial uses of recorded music.



Christopher completed a one-year placement with the IFPI, London as part of his course, which is designed to meet the exacting requirements found within the audio industry. A unique combination of five key themes runs through the programme: industry and visual media, production and synthesis, digital

audio and project, acoustics and audio electronics, and live and recorded sound. But Christopher feels the key to his success is the contacts he made during his placement.



IMPROVE YOUR PERFORMANCE

There is growing evidence that students who undertake placements as part of their studies perform better when they complete their studies, achieving more of their potential.

“ It was an inspiring experience for me... I think the placement definitely influences your on-going ambitions and helps them develop. Making these contacts was invaluable. I’m now pursuing a career based on certain aspects of the things I encountered in the industry. You can’t get the experience any other way apart from being out there and when you’re competing with everybody else, ... you need every single bit of experience you can get and every single insight. ”



GAIN REAL WORLD EXPERIENCE
 Placements offer an opportunity to put your knowledge into practice, deepen your understanding and develop new skills.

ANDY JENNINGS
BSc (Hons) Sound Engineering and Production

Andy completed his industrial placement at MIDAS, part of The MUSIC Group UK, which offers placements to students on his course and our BSc (Hons) Music Technology course. Both are aimed at creating multi-skilled and versatile graduates who can use technology to capture and distribute sound recordings, as well as understand the underlying principles needed to make informed decisions about technologies in this fast-evolving sector.



The MUSIC Group is one of the world’s largest holding companies for pro audio and music products brands. As the corporate parent for world-recognized brands such as MIDAS®, KLARK TEKNIK®, BEHRINGER® and BUGERA®, the MUSIC Group owns and manages some of the finest brands in the industry.

“Our placement experience is a two way knowledge exchange, where The MUSIC Group UK gains resource with new ideas and hands on music technology experience; the student gets real working experience and insight into a fast moving truly global group. Birmingham City University has consistently provided a high standard of placement students to us over the years and we shall be back for more!”

Paul Withers, Senior Manager, RnD
 The MUSIC Group UK

“ The placement was massively beneficial to me in a multitude of ways. It offered a ‘real world’ experience of working as part of a team and towards deadlines, which, if not met, would actually affect a product that would be released to the public. MIDAS has agreed to allow me to develop some software as my final year project and is sponsoring me to do so! There have also been comments of there being a job there if I wanted it after completing my degree, which has proven that opportunities do arise when the effort is put in to achieve them. ”

Our **School of Engineering, Design and Manufacturing Systems** offers a wide range of courses that benefit from active engagement with regional, national and international industry. For example, we are the first UK-based academy for PTC Inc (business software solutions provider to the US Government), a lighthouse member of the SAP University Alliance Programme and we work closely with international technology and engineering solution provider TechnoSoft.

KERRIE DAVIS

BSc (Hons) Motorsports Technology 2014



Kerrie worked in the Global Engineering department at GKN Driveline, Birmingham. She became a member of the Jaguar Land Rover account team, working as an Application Engineer on heavy duty Land Rover products. Her varied role presented opportunities to work with a range of departments, including Product Launch, Manufacturing Engineering, Assembly Engineering, Test and Analysis and Quality; and with GKN's sister companies overseas.

Following her placement, she was offered a position at the company and is returning part-time to complete her degree.

GKN Driveline is the largest business within the global engineering group, GKN plc and a leading global supplier to the world's automotive, off-highway and aerospace manufacturers.

“The industry experience has proved invaluable to me in many ways. I have learnt so many new skills and developed existing ones, gained confidence in my ability as an engineer and met an abundance of great and interesting people who have helped me throughout the year. I would recommend the year in industry scheme to anyone as a really good way to gain real world experience and increase the chance of future employment in their chosen industry.”

“The year in Industry gives students an opportunity to gain valuable networking experience that could aid them when they graduate; it also gives the employing company an opportunity to see the skills the student brings and offer possible employment after graduation. Kerrie impressed us at an early stage and it was decided to offer full employment as a trainee Application Engineer with release to the University to complete her degree on a part-time basis. The employment on the Year in Industry can also help with final-year projects; certainly in Kerrie's case her final-year project will be a real problem-solving exercise on a customer vehicle application.”

Simon Shepherd, Platform Engineering Manager
GKN Driveline



EARN WHILE YOU LEARN

Most placement students are paid during their time in work.

MICHAEL CARTER

BEng (Hons) Automotive Engineering 2013

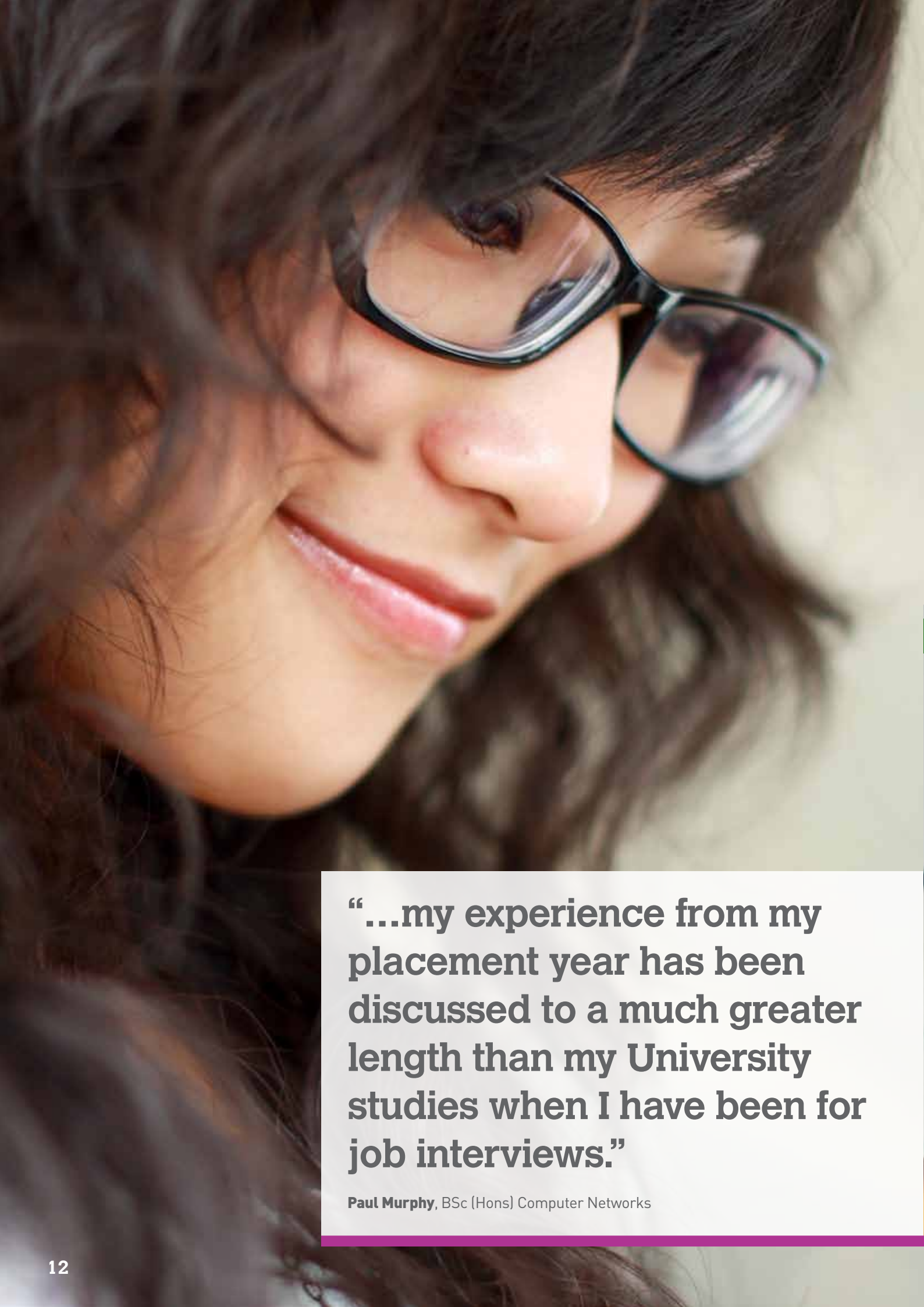
Michael Carter began his 12-month placement at Bentley Motors in June 2011, which was extended until September 2012. During this time he assumed responsibility for the design, development and testing of the manual boot system in one of Bentley's future models. He was heavily involved in the development of the power boot system and also the design of two acoustic baffles for the future model. Alongside these two main responsibilities, he assisted in the research for the EXP 9 F 4x4 concept and completed many other smaller tasks for his department.



BENTLEY

Bentley Motors Limited was founded in 1919 and went from strength to strength through the 1920s, with an evolving series of acclaimed motor cars and a parade of racing triumphs, including five outright victories at Le Mans between 1924 - 1930 and a sixth in 2003. WO Bentley aimed "To build a good car, a fast car, the best in class", which continues to inform the company's beliefs, actions and ambitions for the future. Located in Crewe, England since 1946 and owned since 1998 by Volkswagen AG, Bentley Motors is dedicated to making responsive and powerful Grand Tourers with the stamina to cross continents at pace, and drive in refined comfort and style.

“I very much enjoy my job and my work, and have been very well supported in my personal and academic development within my role. I'm looking toward re-entering Bentley through the graduate scheme, and also the opportunity to use a Bentley-related final-year project. I thoroughly recommend taking a placement year as it's an invaluable experience to take with you into your final year and beyond.”



“...my experience from my placement year has been discussed to a much greater length than my University studies when I have been for job interviews.”

Paul Murphy, BSc (Hons) Computer Networks

Our Courses

As our case studies show, the value of placements can't be underestimated. That's why, from January 2013, we intend for all of the following courses to offer an industrial placement option, helping to enhance your employability.

Birmingham School of the Built Environment

BSc (Hons) Architectural Technology
BSc (Hons) Building Surveying
BSc (Hons) Construction Management
BSc (Hons) Planning, Environment and Development
BSc (Hons) Quantity Surveying
BSc (Hons) Real Estate
MA Environmental and Spatial Planning
MSc Construction Project Management
MSc Environmental Sustainability
MSc Environmental Sustainability (Design and Construction)
MSc Environmental Sustainability (Green Economics)
MSc Environmental Sustainability (Planning and Policy)
MSc Integrated Design and Construction Management*
MSc Real Estate Management

School of Computing, Telecommunications and Networks

BEng (Hons) Electronic Engineering
BEng (Hons) Telecommunications and Networks
BSc (Hons) Business Information Technology
BSc (Hons) Computer Games Technology
BSc (Hons) Computer Networks
BSc (Hons) Computer Networks and Security
BSc (Hons) Computer Science
BSc (Hons) Forensic Computing
BSc (Hons) Information and Communications Technology
MSc Business Computing
MSc Computer Science
MSc Computing
MSc Data Networks and Security
MSc Data Networks and Security + CCNP

School of Digital Media Technology

BSc (Hons) Film Production and Technology
BSc (Hons) Film Technology and Special Effects
BSc (Hons) Multimedia Technology
BSc (Hons) Music Technology
BSc (Hons) Sound Engineering and Production
MSc Web Technology

School of Engineering, Design and Manufacturing Systems

BEng (Hons) Automotive Engineering
BEng (Hons) Mechanical Engineering
BSc (Hons) Enterprise Information Systems
BSc (Hons) Motorsports Technology
MSc Automotive Calibration and Control
MSc Automotive Engineering
MSc Enterprise Systems Management
MSc International Logistics and Supply Chain
MSc International Project Management
MSc Logistics and Supply Chain Management
MSc Mechanical Engineering
MSc Project Management
MSc Quality Management

(* course subject to approval)



Contact Us

Can't find what you need to know on our website?
To find out more about any of our courses or placement opportunities, please contact us.

Prospective students from the UK or EU
Birmingham City University
Faculty of Technology, Engineering and the Environment
UK/EU Course Enquiries Team
T: +44 (0)121 331 5595
www.bcu.ac.uk/enquiries

Prospective students from non-EU countries should contact our International Office
Birmingham City University International Office - Birmingham
T: +44 (0)121 331 6714
E: bcuinternational@enquiries.uk.com
www.bcu.ac.uk/international/enquiry-form

Or, take advantage of one of our regional offices
Birmingham City University - Sri Lanka Office
E: srilanka.office@bcu.ac.uk

Birmingham City University - China Office
E: chinaoffice@bcu.ac.uk

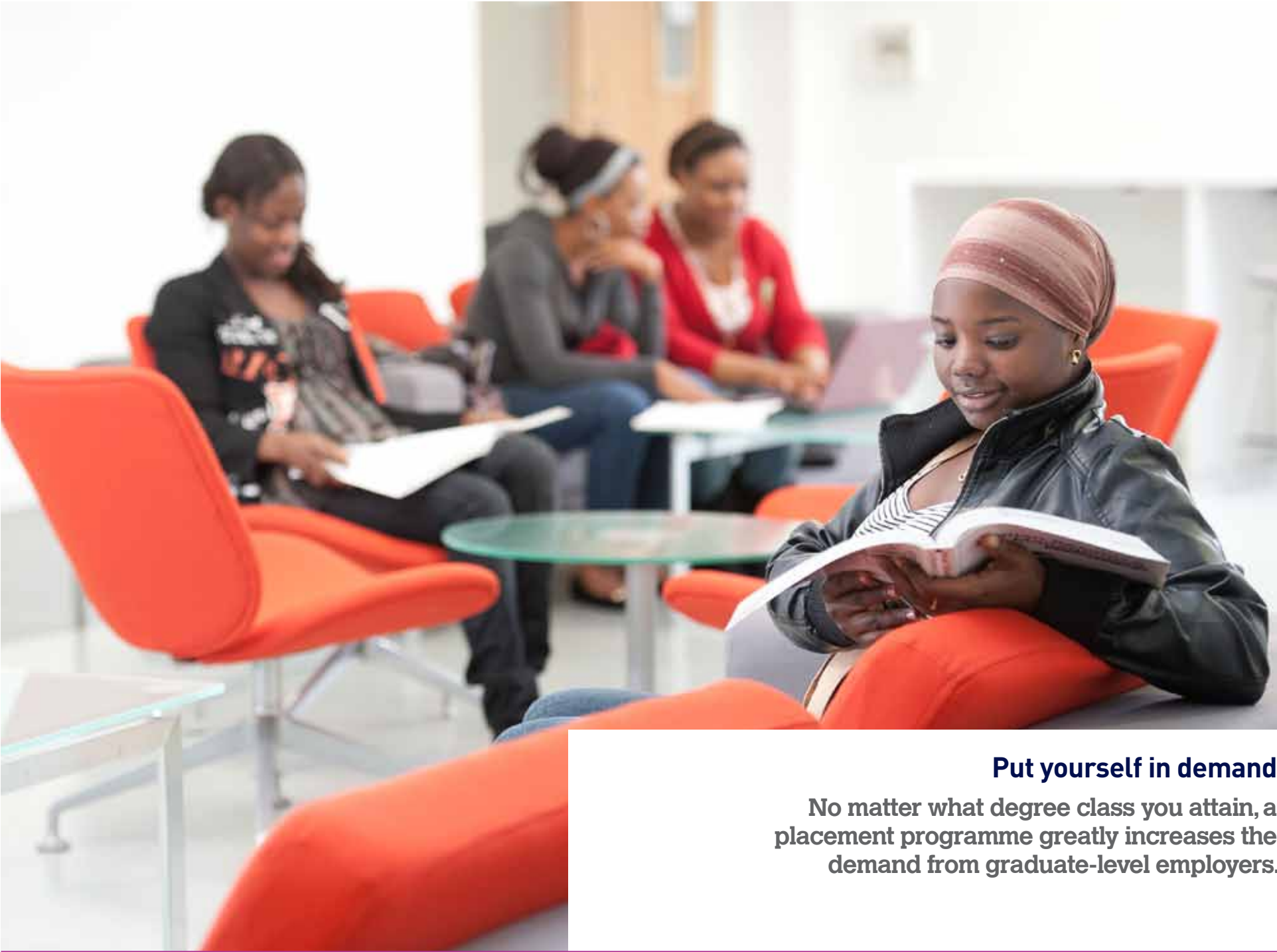
Birmingham City University - Thailand Office
E: thailandoffice@bcu.ac.uk

Birmingham City University - Malaysia Office
E: malaysiaoffice@bcu.ac.uk

Birmingham City University - Nigeria Office
E: bcu_abuja@bcie.co.uk

Birmingham City University - Nigeria (Lagos) Office
E: bcu_nigeria@bcie.co.uk

Birmingham City University - Nigeria (Port Harcourt) Office
E: bcu_ph@bcie.co.uk



Put yourself in demand
No matter what degree class you attain, a placement programme greatly increases the demand from graduate-level employers.

Heritage statement
Our contribution to the education of the citizens of Birmingham and beyond stretches back through a succession of predecessor institutions for over 160 years. We achieved university status in 1992 as the University of Central England, changing our name to Birmingham City University in 2007, reflecting our commitment to, and pride in our home city.

Employability statement
Birmingham City University is committed to preparing students for successful employability and professional careers. We have an innovative approach to employability that will help you obtain an interesting and well-paid graduate job. Read our Employability Statement to find out more: www.bcu.ac.uk/courses/employability-statement.

Disability statement
Birmingham City University's Disability Service aims to enable students with disabilities or learning support needs to make the most of their time at university. To discuss any aspect of disability, contact the Disability Service on +44 (0)121 331 5588, or email disability@bcu.ac.uk.

Legal statement
The information in this leaflet is intended as a general guide to the University and forms no part of any contract between you and the University. For full terms and conditions please visit: www.bcu.ac.uk/about-us/policies-and-procedures. The information contained in this document is correct at time of going to print.

Equal opportunities
Birmingham City University promotes equality of opportunity in respect of every aspect of its provision. For full details of our Equal Opportunities Policy, please visit www.bcu.ac.uk/about-us/policies-and-procedures/equality-scheme-action-plan.

**“I would recommend the
year in industry scheme
to anyone as a really
good way to gain real
world experience and
increase the chance of
future employment in their
chosen industry.”**

Kerrie Davis, BSc (Hons) Motorsports Technology

Faculty of Technology, Engineering
and the Environment
Birmingham City University
Millennium Point
Curzon Street
Birmingham B4 7XG
UK.

Tel: +44 (0)121 331 5400
Email: enquiries@tee.bcu.ac.uk
www.bcu.ac.uk/tee/placements