

BA (Hons) International Finance (Top-Up)

Applications:	For full-time study please apply through UCAS Institution code: B25 Course code: N390
Duration:	Full time, One year
Location:	Curzon Building, City Centre Campus

WHY CHOOSE US?

- Birmingham City University is in the top 30 for student satisfaction [Sunday Times University Guide, 2014].
- Study at one of the UK's most established and respected business schools.
- CIMA and CIPFA are examples of our professional bodies. We are also a Platinum Approved learning provider of the Association of Chartered Certified Accountants (ACCA).
- You will be taught by industry experienced academics, that are able to bring real world knowledge to the classroom.
- With the support from your tutor you are able to build your own personal programme of study.

ENTRY REQUIREMENTS

At least 240 UK credits or 120 ECTS credits in a business-related field with five GCSEs at grade A-C (including mathematics) or equivalent. You must also have a English Language qualification.

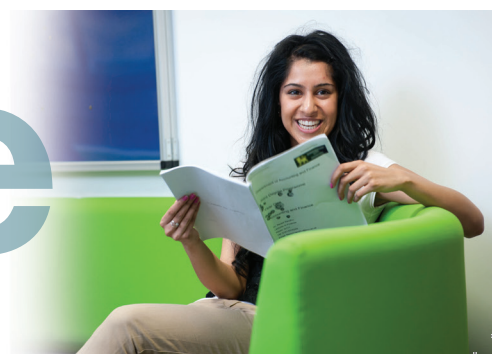
For further details please visit; www.bcu.ac.uk/international-finance-top-up.

COURSE OVERVIEW

- International Finance (Top-Up) will enable you to apply theory to inter-dependent international financial and business environments which will relate and prepare you for real working experiences.
- Overall you will study 7 modules with assessments taking place at the end of each term.
- The course invites you to consider the direction in which you want to progress your future career. This is supported with the option to study specific modules which will best suit your future plans.



Finance



COURSE STRUCTURE

Modules offered on the programme may include:

- Comparative Financial Systems
- Comparative International Reporting
- Current Issues in Company Reporting
- Financial Management
- Globalisation
- International Business Strategy
- International Corporate Finance
- Islamic Finance
- Statistical Decision Making
- Statistical Modelling

ASSESSMENT

The focus of key assessments will include a range of methods designed to mirror the question and responses that arise from day-to-day operations. Assessment will vary from sitting examinations to producing business reports, portfolios and case studies. During the course you will also be expected to participate in individual and group presentations, and projects.

FURTHER STUDY

On completion of your degree you can progress your studies with Birmingham City Business School with a postgraduate qualification. We have a range of courses available including, MSc Accountancy and Finance (ACCA Pathway), MSc Accountancy and Finance (CIMA pathway) and MSc Management and Finance.

EMPLOYABILITY

There are a range of activities available for you to participate in alongside your studies that will enhance your employability skills and help make you stand out from the crowd.

- The Leadership challenge can increase and develop your teamwork and leadership capabilities. It incorporates a series of workshops and seminars on a range of topics from IT skills, how to complete application forms and CV's and gives you the opportunity to participate in events and challenges.
Find out more: www.bcu.ac.uk/leadershipchallenge.
- You can also earn while you learn with the university's 'OpportUNITY: Student Jobs on Campus' scheme. This is designed to give our students the first opportunity to undertake part-time positions within the university. This may include working at university events such as open days.
Find out more at; www.bcu.ac.uk/about-us/celt/student-engagement/student-employment-opportunity.

CONTACT US

Telephone 0121 331 5595 or contact us online at www.bcu.ac.uk/enquiries.

To find out more visit www.bcu.ac.uk/bcbs

[www.twitter.com/bcubusiness](https://twitter.com/bcubusiness)

www.facebook.com/birminghamcitybusinessschool

www.linkedin.com/company/bcbs

0914

Finance

