

## Section D

### Course Content

#### Section D Contents

<a href="#">PGCE Secondary: Aims</a>	D1
<a href="#">PGCE Secondary Course Structure and Module Overview</a>	D2
<a href="#">University taught programme – Education, Pedagogy, and Professional Studies (EPPS)</a>	D3-D7
<a href="#">Art &amp; Design Subject workshops</a>	D8-D9
<a href="#">Design &amp; Technology Subject workshops</a>	D10
<a href="#">Drama Subject workshops</a>	D11 - D12
<a href="#">Mathematics Subject workshops</a>	D13 - D14
<a href="#">Music Subject workshops</a>	D15 - D16
<a href="#">Science Subject workshops</a>	D17 - D18

Our Secondary Partnership Ofsted (2014) acknowledged...

#### **Key strengths of the secondary partnership**

Trainees who leave their courses with a wide range of knowledge and skills which makes them highly employable. Their career progression is swift and they make a real difference to the quality of teaching and learning in their schools.

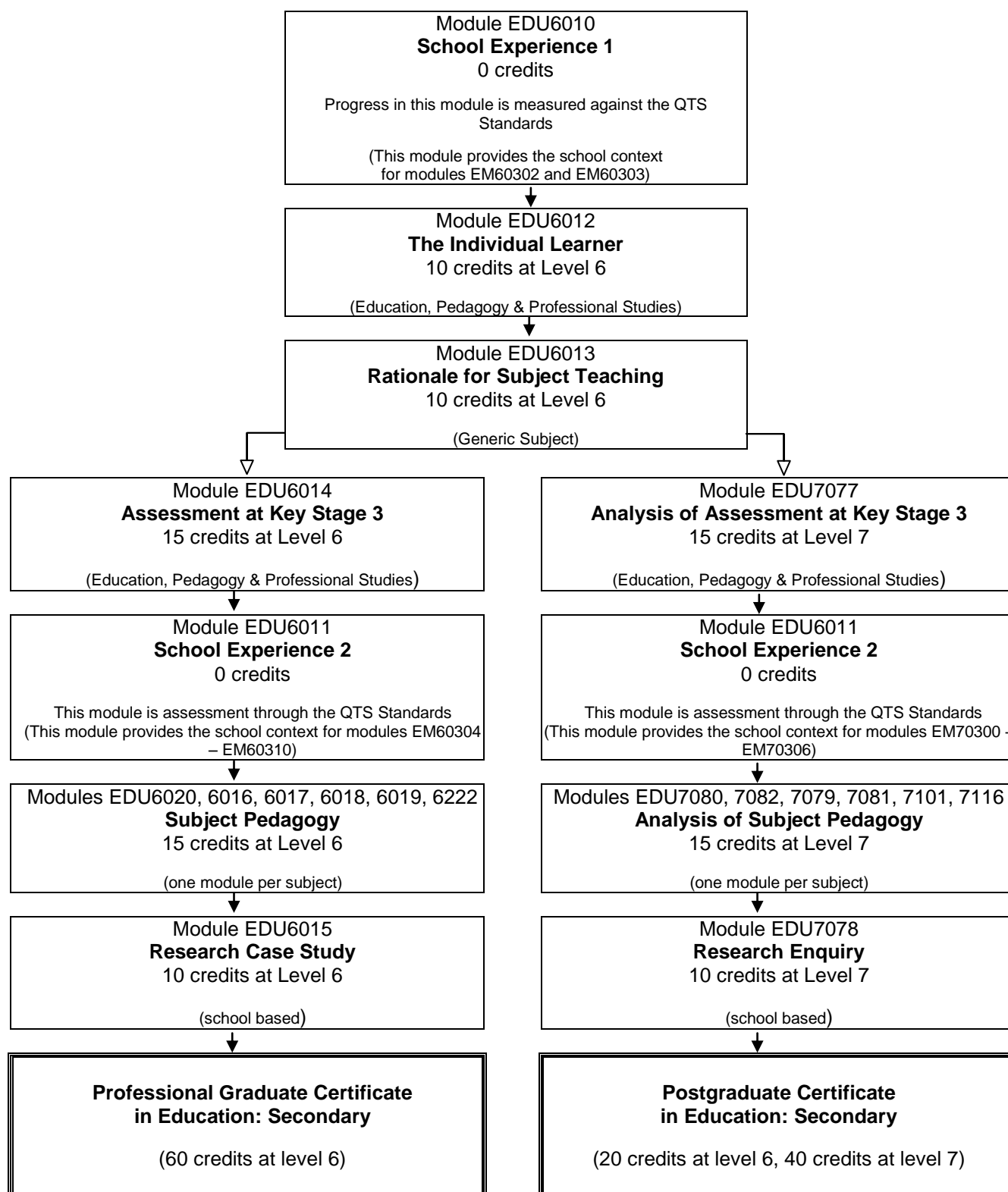
## Course Aims and Outcomes

**The PGCE Secondary Course aims to produce highly skilled graduate teachers who:**

- have a deep knowledge and understanding of learning and teaching enabling them to demonstrate the highest levels of professional practice;
- are committed early career professionals who are confident, creative, reflective and accountable practitioners, able to teach their subject in contemporary cultural contexts delivering a rich and diverse curriculum; and able to accept responsibility for determining and achieving professional goals;
- are able to exercise professional judgement, based on an informed understanding of a systematic and coherent body of knowledge related to education and subject pedagogy.

[Return to Section D Contents](#)

## Programme structure and requirements, levels, modules, credits and awards



Trainees who achieve 60 credits, but fail to complete Module EDU6011 successfully will be awarded a Professional / Postgraduate Certificate in Education Studies.

[Return to Section D Contents](#)

**PGCE Secondary Indicative Taught Programme 2014-15**  
(subject to alteration)

BCU Week	2014-15															
	W/B Monday	Monday			Tuesday			Wednesday			Thursday			Friday		
		9-11	11-13	14-16	9-11	11-13	14-16	9-11	11-13	14-16	9-11	11-13	14-16	9-11	11-13	14-16
6	01-Sep-14							HBSE completed			Enrol Intro PC	Intro PC Enrol	Library & ICT Induction	Subject Workshop (School Direct Enrolment and Induction am)		
Meetings								9-11 Team Meeting								
Assignments																
7	08-Sep-14	Prof Values PT	Follow-up		Standards Intro PC		Standards Intro Subjects	Tutorials			Subject Workshop			Subject Workshop		
Assignments		DIA Final Submission														
8	15-Sep-14	Teaching Styles PT	Follow-up		TIL MF	Follow-up	Follow-up	The Curriculum PT	Follow-up	Follow-up	Learning Theory MF	Follow-up	Sub Pres Intro PC	Subject Workshop		
Assignments		DIA to moderators												DIA Final Marks to Trainees		
9	22-Sep-14	Structuring Learning & Lesson Design PT	Follow-up		Differentiation & Inclusion PT	Follow-up	Numeracy DN	Planning for Learning PT	Follow-up	Follow-up	Subject Presentations			Subject Workshop		
Assignments																
10	29-Sep-14	AfL MF	Follow-up		Questioning IA	Follow-up	TP Prep PC with F-up	Explaining & Modelling PT	Follow-up	Literacy and Oracy CB	Thinking skills and learning to learn HJ	Follow-up	RST PC	Subject Workshop		
Meetings											School 1 Briefing 4.30-6.30					
Assignments																
11	06-Oct-14	Safeguarding PT	Follow-up	Harvard MF (45 mins only)	Sch 1			Sch 1			Sch 1			Subject Workshop		
Assignments																
12	13-Oct-14	Managing Behaviour 1 PT	Follow-up		Sch 1			Sch 1			Sch 1			Subject Workshop		
Assignments																
13	20-Oct-14	Developing Classroom Persona SS	Follow-up	Diversity Event TBC	Sch 1			Sch 1			Sch 1			Subject Workshop		
Meetings																
Assignments																
14	27-Oct-14	Placement Preparation			Placement Preparation			Placement Preparation			Placement Preparation			Placement Preparation		

BCU Week	2014-15															
	W/B Monday	Monday			Tuesday			Wednesday			Thursday			Friday		
		9-11	11-13	14-16	9-11	11-13	14-16	9-11	11-13	14-16	9-11	11-13	14-16	9-11	11-13	14-16
15	03-Nov-14	Sch 1			Sch 1 / TIL			Sch 1 / TIL			Sch 1			Sch 1		
Meetings			11-1 Team Meeting		Student Staff Committee 4.30-6.30			Strategic Leadership Group 4.30-6.30								
Assignments					TIL Presentations & Moderation			TIL Presentations & Moderation						TIL Formative Marks		
16	10-Nov-14	Sch 1			Sch 1			Sch 1			Sch 1			Sch 1		
Assignments																
17	17-Nov-14	Sch 1			Sch 1			Sch 1			Sch 1			Sch 1		
Assignments		TIL Re-sub Presentations												TIL Final Marks to Trainees RST Formative Submission		
18	24-Nov-14	Sch 1			Sch 1			Sch 1			Sch 1			School Experience Review		
Assignments																
19	01-Dec-14	Sch 1			Sch 1			Sch 1			Sch 1			Sch 1		
20	08-Dec-14	Sch 1			Sch 1			Sch 1			Sch 1			Sch 1		
Assignments					RST to Moderators											Sch 1 A&E Reports in
21	15-Dec-14	Sch 1			Tutorials			Sch 1			Sch 1			Sch 1		
Meetings								9.30 TP Full Exam Board								
Assignments					RST Formative Marks											
22	22-Dec-14	Christmas Holiday														
23	29-Dec-14															
24	05-Jan-15	Subject Based Directed Tasks			Subject Based Workshops (Peer Tutoring)			THEME: Assessment, monitoring and accountability								
			11-1 Team Meeting					Assessment of Learning MF	Follow-up	Using data PT	School Based Subject Activities, Assessment, monitoring and accountability			Subject Workshop		
Assignments					RST Final Submission											
		Subject Based Directed Tasks			THEME: Diversity, Transition and Inclusion											
25	12-Jan-15	9.30am Preliminary Exam Board			Supporting Early Readers, inc SSP		Transitions	EAL CB	Follow-up	Multi-agency working PT	School Based Subject Activities, Diversity, transition and inclusion			Subject Workshop		
Assignments								RST Final Marks to Trainees								

BCU Week	2014-15															
	W/B Monday	Monday			Tuesday			Wednesday			Thursday			Friday		
		9-11	11-13	14-16	9-11	11-13	14-16	9-11	11-13	14-16	9-11	11-13	14-16	9-11	11-13	14-16
		Subject Based Directed Tasks			THEME: Raising aspiration and removing barriers to achievement											
26	19-Jan-15				Achievement gaps and barriers PT	Follow-up	TP Prep & AK3/SK3 Assignment PC	Well-being & SMSC PT	Follow-up	Managing Behaviour 2 VL	School Based Subject Activities Raising aspiration and removing barriers.			Subject Workshop		
Meetings				1.30 Progression Exam Board				School 2 Briefing 4.30-6.30								
Assignments														SPI/AP Part A (Electronic) Submission		
27	26-Jan-15	Subject Based Directed Tasks			Sch 2			Sch 2			Employability and Applying for Jobs			Subject Workshop		
Assignments																
28	02-Feb-15	Subject Based Directed Tasks			Sch 2			Sch 2			Peer Tutoring			Subject Workshop		
Assignments																
29	09-Feb-15	THEME: Raising aspiration and removing barriers to achievement			Sch 2			Sch 2			THEME: Assessment, monitoring and accountability			Subject Workshop		
		SEN and inclusion Workshop		Bullying SS							Using data follow-up VL	Ofsted PT	Follow-up			
Meetings				4.15 Diversity Event TBC												
Assignments														SPI/AP Part A Feedback		
30	16-Feb-15	Placement Prepration			Placement Preparation			Placement Preparation			Placement Preparation			Placement Preparation		
31	23-Feb-15	Sch 2			Sch 2			Sch 2			Sch 2			Sch 2		
Meetings					Student Staff Committee 4.30-6.30			Strategic Leadership Group 4.30-6.30								
Assignments																
32	02-Mar-15	Sch 2			Sch 2			Sch 2			Sch 2			Sch 2		
Meetings			11-1 Team Meeting													
33	09-Mar-15	Sch 2			Sch 2			Sch 2			Sch 2			Sch 2		

BCU Week	2014-15															
	W/B Monday	Monday			Tuesday			Wednesday			Thursday			Friday		
		9-11	11-13	14-16	9-11	11-13	14-16	9-11	11-13	14-16	9-11	11-13	14-16	9-11	11-13	14-16
34	16-Mar-15	Sch 2			Sch 2			Sch 2			Sch 2			Sch 2		
Assignments																
35	23-Mar-15	Sch 2			Sch 2			Tutorials			Sch 2			Sch 2		
Assignments								AK3 & SK3 Formative Submissions							Mid-Point Reviews in	
36	30-Mar-15	Easter														
37	06-Apr-15															
38	13-Apr-15	Sch 2			Sch 2			Sch 2			Sch 2			Sch 2		
Assignments																
39	20-Apr-15	Sch 2			Sch 2			Sch 2			Sch 2			Sch 2		
Assignments																
40	27-Apr-15	Sch 2			Sch 2			Sch 2			Sch 2			Sch 2		
Meetings			11-1 Team Meeting													
Assignments		AK3/SK3 to Moderators									AK3/SK3 to SAS Office for Processing					
41	04-May-15	Bank Holiday			SER x 2 LG/L7	SER Subject Follow Up		Sch 2			Sch 2			Sch 2		
Assignments					AK3/SK3 Formative Marks SP & AP Formative Submissions											
42	11-May-15	Sch 2			Sch 2			Sch 2			Sch 2			Sch 2		
Assignments														AK3/SK3 Final Submission		
43	18-May-15	Sch 2			Sch 2			Sch 2			Sch 2			Sch 2		
Assignments											AK3/SK3 Returned to SAS Office SP/AP to Moderators					Sch 2 A&E Reports in
44	25-May-15	Research Phase Preparation			SP/AP to SAS Office for Processing	Research Phase Preparation		Research Phase Preparation			Research Phase Preparation			Research Phase Preparation		
45	01-Jun-15	Research Phase Preparation			Sch 2 Research Phase			Sch 2 Research Phase			Sch 2 Research Phase			Sch 2 Research Phase		
Meetings					Student Staff Committee 4.30-6.30			Strategic Leadership Group 4.30-6.30								
Assignments								AK3/SK3 Final Marks to Trainees SP/APFormative Marks								

BCU Week	2014-15															
	W/B Monday	Monday			Tuesday			Wednesday			Thursday			Friday		
		9-11	11-13	14-16	9-11	11-13	14-16	9-11	11-13	14-16	9-11	11-13	14-16	9-11	11-13	14-16
46	08-Jun-15	Sch 2 Research Phase			Sch 2 Research Phase			Sch 2 Research Phase			Sch 2 Research Phase			Sch 2 Research Phase		
Meetings			11-1 Team Meeting Moderation													
Assignments								SP/AP Final Submission								
47	15-Jun-15	Sch 2 Research Phase			Sch 2 Research Phase			Sch 2 Research Phase			Sch 2 Research Phase			Sch 2 Research Phase		
Assignments		SP/AP to SAS Office for Processing												SP/AP Final Marks to Trainees		
48	22-Jun-15	Sch 2 Research Phase			Sch 2 Research Phase			Sch 2 Research Phase			Sch 2 Research Phase			Sch 2 Research Phase		
Assignments					Research Presentations and Moderation			Research Presentations & Moderation			RCS/RE Formative Marks					
49	29-Jun-15	PDP & CEDP		Prelim Exam Board	Tutorials (PDP Sign Off)			Career Launch Lecture		Career Launch Seminars	Course Evaluations & External Examiner Meetings		2.30 Exam Board			
Assignments		Research Re-sub Presentations			RSC/RE Final Marks to Trainees											
50	06-Jul-15															
Meetings		New Mentor Training 4.30-6.30			New Mentor Training 4.30-6.30									Strategic Course Development Day		
Assignments																

TAUGHT SESSIONS KEY	EDU6010 SE1	EDU6011 SE2	ADMIN AND TUTORIALS	EDU6012 TIL EPPS	EDU6013 RST SUBJECT WORKSHOPS	EDU6014 AK3 EDU7077 SK3 EPPS	EDU6016 SP EDU6017 SP EDU6018 SP EDU6019 SP EDU6020 SP	EDU7079 AP EDU7080AP EDU7081 AP EDU7082 AP EDU7101 AP	EDU6015 RCS EDU7078 RE RESEARCH & RESEARCH PLACEMENT
ASSIGNMENTS KEY			Diagnostic Assignment	The Individual Learner	Rationale for Subject Teaching	Assessment at KS3 & Analysis of Assessment	Subject Pedagogy &	Analysis of Subject Pedagogy	Research Case Study and Research
ASSIGNMENT MODERATORS			Helen Thomas and Chris Bolton	Ian Axtell and Andrew Steed	Tracey Goodyere and Kelly Davy Nicklin	AK3 - Phil Taylor SK3 - Peter Carr and Don Newton	SP - Jean Dyson	AP - Simon Spencer and Tracey	RCS - Martin Fautley RE - Peter

[Return to Section D Contents](#)



## PGCE Secondary

### Art and Design Curriculum Workshops 2014-15

(Subject to alteration)

BCU Wk	Date	Module EDU6013 Sessions
7	Thursday 11 <sup>th</sup> September	9.00am. Professional Biographies – Trainees deliver a short visual “biography” that outlines their background in art or design – a selected portfolio will be required.
7	Friday 12 <sup>th</sup> September	<p>9.00am. Subject Workshop. Trainees will take part in two or three day workshops across the autumn term. The workshops will include:</p> <ul style="list-style-type: none"> <li>○ Critical and Contextual Studies in Art Education</li> <li>○ Space as Medium in the Creative Art and Design Classroom</li> <li>○ Drawing</li> </ul> <p>In addition to the Subject Workshops there will be supplementary Peer Teaching sessions. These will usually take place on Mondays – 2.00-5.00pm.</p>
8	Friday 19 <sup>th</sup> September	9.00am. Subject Workshop – as above
9	Friday 26 <sup>th</sup> September	9.00am. Subject Workshop – as above
10	Friday 3 <sup>rd</sup> October	9.00am. Subject Workshop – as above
11	Friday 10 <sup>th</sup> October	9.00am. Subject Workshop – as above
12	Friday 17 <sup>th</sup> October	9.00am. Subject Workshop – as above
13	Friday 24 <sup>th</sup> October	9.00am. Subject Workshop – as above

BCU Wk	Date	Module EDU6020 / EDU7080 Sessions
24	Friday 9 <sup>th</sup> January	<p>9.00am. Subject Workshop. Trainees will take part in workshops across the spring term. The spring term workshops take place at BCU and in Partnership Schools’ Art Departments. The workshops will include:</p> <ul style="list-style-type: none"> <li>○ Digital Media</li> <li>○ Printmaking</li> <li>○ Ceramics</li> <li>○ Learning with Craft Materials</li> <li>○ Gallery Education</li> <li>○ Critical Awareness in the Curriculum</li> </ul> <p>In addition to the Subject Workshops there will be supplementary Peer Teaching sessions which will usually take place on Thursdays – 5.00-7.00pm.</p>
25	Friday 16 <sup>th</sup> January	9.00am. Subject Workshop – as above
26	Friday 23 <sup>rd</sup> January	9.00am. Subject Workshop – as above

27	Friday 30 <sup>th</sup> January	9.00am. Subject Workshop - as above
28	Friday 6 <sup>th</sup> February	9.00am. Subject Workshop – as above
29	Friday 13 <sup>th</sup> February	9.00am. Subject Workshop
Visits to other sites of interest are encouraged throughout the year as appropriate.		Visits could be selected from: The Marion Richardson Archive, Ikon Gallery, Birmingham Museum and Art Gallery, The New Art Gallery Walsall, Wolverhampton Art Gallery, Birmingham Museum Collection Centre, The Black Country Museum, Pitt Rivers and Ashmolean Museums, Oxford.

[Return to Section D Contents](#)

## PGCE Secondary

### Design and Technology Workshops 2014-15

(subject to alteration as Health and Safety training may be in addition either on Monday afternoons or as a replacement to some Friday Workshops )

BCU Wk	Date	Module EDU6012 Sessions
6	Friday 5 <sup>th</sup> September	Introductory DT Workshop 1 am & pm
7	Thursday 11 <sup>th</sup> September	Introductory DT Workshop 2 am & pm
	Friday 12 <sup>th</sup> September	Textiles: Modelling and Construction am Fibres and Fabrics pm
8	Friday 19 <sup>th</sup> September	Practical cooking skills for life and STEM – Part 1
9	Friday 26 <sup>th</sup> September	Introduction to E Textiles
		Smart materials – Food and Textiles
10	Friday 3 <sup>rd</sup> October	Using ICT in D&T 1
		Using ICT in D&T 2
11	Friday 10 <sup>th</sup> October	Food: Sensory and Product Analysis - Food Preparation
		Food Product Development
12	Friday 17 <sup>th</sup> October	Food & Textiles: Pedagogical skills, higher order skills workshops – GCSE and beyond
18	Friday 28 <sup>th</sup> November	Teaching practice forum

BCU Wk	Date	Module EDU6012 Sessions
24	Tuesday 6 <sup>th</sup> January	Peer tutoring 1 (textiles) am Peer tutoring 1 (Food) pm
24	Friday 9 <sup>th</sup> January	Data usage to inform assessment strategies am & pm
25	Friday 16 <sup>th</sup> January	Personalised Learning in DT am & pm
26	Friday 23 <sup>rd</sup> January	Extra-Curricular themes in Technology department's: Textiles am Food pm
27	Friday 30 <sup>th</sup> January	Planning a new curriculum am & pm
28	Thursday 5 <sup>th</sup> February	Peer Tutoring
29	Friday 6 <sup>th</sup> February	Textiles – pattern drafting am Colours and finishes pm
	Friday 13 <sup>th</sup> February	Level 7 focus group

BCU Wk	Date	Module EDU7079 Sessions
24	Thursday 8 <sup>th</sup> January	Approaches to Assessment
25	Thursday 15 <sup>th</sup> January	Approaches to differentiation - inclusion for all
26	Thursday 22 <sup>nd</sup> January	Food in schools – Health and well being
27	Thursday 29 <sup>th</sup> January	Planning and Inclusion

[Return to Section D Contents](#)

## PGCE Secondary

### Drama Workshops 2014-15 (subject to alteration)

BCU Wk	Date	Module EDU6014 Sessions	Staff
6	Friday 5 <sup>th</sup> September	Introductory Drama Workshop 1 am & pm	CB
7	Thursday 11 <sup>th</sup> September	Woyzeck- Introductory Drama Workshop 2 am & pm	CB
	Friday 12 <sup>th</sup> September	Creating, Performing and Responding am & pm	SS
8	Friday 19 <sup>th</sup> September	The Drama Curriculum am	SS
		Beyond the Drama Curriculum pm	CB
9	Friday 26 <sup>th</sup> September	Developing Character	SS
		Using Texts	CB
10	Friday 3 <sup>rd</sup> October	Language and Vocal	SS
		Movement and Physical Work	CB
11	Friday 10 <sup>th</sup> October	Drama Techniques	SS
		Whole Class Drama	CB
12	Friday 17 <sup>th</sup> October	Peer Tutoring: Practitioners am & pm	CB
13	Friday 24 <sup>th</sup> October	Post 16 Workshops with visiting Schools	CB
17	Friday 28 <sup>th</sup> November	TPF	CB
		Drama and ICT	CB

BCU Wk	Date	Module EDU6017 Sessions	Staff
24	Tuesday 6 <sup>th</sup> January	Peer Tutoring: Theatre History am & pm	CB
	Thursday 8 <sup>th</sup> January	Approaches to Assessment and Differentiation (School Based)	CB
	Friday 9 <sup>th</sup> January	Assessment and Progression in KS3 Drama am (Greek Theatre)	SS
		Assessment and Progression in KS4 Drama pm (Commedia del' Arte)	CB
25	Friday 16 <sup>th</sup> January	Devising	CB
26	Friday 23 <sup>rd</sup> January	Raising Aspirations and Removing Barriers to Learning with Big Brum Theatre in Education Company.	CB
27	Friday 30 <sup>th</sup> January	Approaches to Drama Exams- GCSE Applied Theatre am	SS
		Approaches to Drama Exams- A-Level exploration of Dramatic Creation pm	CB
28	Thursday 5 <sup>th</sup> February	Peer Tutoring: Theatre from other places am & pm	CB
	Friday 6 <sup>th</sup> February	Planning for KS4, KS5 and Transition	CB
29	Friday 13 <sup>th</sup> February	Planning for KS3- Process Drama	CB

BCU Wk	Date	Module EDU7079 Sessions
24	Thursday 15 <sup>th</sup> January	Approaches to Assessment
25	Thursday 22 <sup>nd</sup> January	Alternative Assessment Strategies
26	Thursday 29 <sup>th</sup> January	Devising and Drama Processes
27	Thursday 5 <sup>th</sup> February	Planning and Inclusion

[Return to Section D Contents](#)

## PGCE Secondary

### Mathematics Workshops 2014-15

(subject to alteration)

BCU Wk	Date	Module EDU6013 Sessions
6	Friday 5 <sup>th</sup> September	Subject Introduction: Doing Maths or Practising the Finished Product?
7	Thursday 11 <sup>th</sup> September	What is Maths and what does effective maths teaching look like?
7	Friday 12 <sup>th</sup> September	Issues in the Teaching of Number 1 (including use of calculators) supported by the effective use of ICT throughout
8	Friday 19 <sup>th</sup> September	Issues in the Teaching of Number 2 (including use of calculators) supported by the effective use of ICT throughout
9	Friday 26 <sup>th</sup> September	Issues in the teaching and learning of Algebra 1 supported by the effective use of ICT throughout
10	Friday 3 <sup>rd</sup> October	Introduction to the Teaching of Algebra 2 supported by the effective use of ICT throughout
11	Friday 10 <sup>th</sup> October	Issues in the Teaching and Learning of Geometry & Measures 1 supported by the effective use of ICT throughout
12	Friday 17 <sup>th</sup> October	Issues in the Teaching and Learning of Geometry & Measures 2 supported by the effective use of ICT throughout
13	Friday 24 <sup>th</sup> October	Issues in the Teaching and Learning of Statistics supported by the effective use of ICT throughout

BCU Wk	Date	Module EDU6019 / EDU7081 Sessions
24	Friday 9 <sup>th</sup> January	Issues in the Teaching and Learning of Statistics 2 supported by the effective use of ICT throughout
25	Friday 16 <sup>th</sup> January	Teaching and Learning at A Level 1
26	Friday 23 <sup>rd</sup> January	Issues in the teaching and learning of algebra 3 supported by the effective use of ICT throughout
27	Friday 30 <sup>th</sup> January	Issues in the Teaching and Learning of Geometry & measures 3 supported by the effective use of ICT throughout

28	Friday 6 <sup>th</sup> February	The Teaching of Proof
29	Friday 13 <sup>th</sup> February	Teaching and Learning at A Level 2

[Return to Section D Contents](#)

## PGCE Secondary

### Music Workshops 2014-15 (Autumn Term) (Subject to alteration)

\*Please bring an instrument to these sessions.

Week	Date	Module EDU6013 Sessions	
6	Friday 5 <sup>th</sup> September 2014  11am in A114	<b>Introduction:</b> <i>What makes a good music teacher?</i> <i>A personal journey from enculturation to interculturalism!</i>	
		<b>Essential Reading:</b> As this is the first session your essential reading will relate to your personal pre-course tasks in preparation for your tutorial. However, there is some recommended and background reading identified on the reading list that explores some key principles that underpin our music education course.	
7	Thursday 11 <sup>th</sup> September 2014  9am in A114	<b>*Musicians as Learners:</b> <i>What is music education in a classroom?</i> <i>What is it like being a pupil again? Is performing enough?</i>	
		<b>Essential Reading</b> (please discuss using the Moodle Forum): Philpott, C. & Spruce, G. (eds.), (2007), <i>Learning to teach music in the secondary school</i> , SECOND EDITION London: RoutledgeFalmer: <b>Chapters 1 &amp; 2</b>	
7	Friday 12 <sup>th</sup> September 2014  9am in A114	<b>*Instrumental Teaching:</b> <i>An Introduction.</i>	<b>Musical Openings:</b> <i>What do you need to consider when starting a musical journey with a new class of pupils? Where do we start? Exploring professional values.</i>
		<b>Essential Reading</b> (please discuss using the Moodle Forum): Philpott, C. & Spruce, G. (eds.), (2007), <i>Learning to teach music in the secondary school</i> , SECOND EDITION London: RoutledgeFalmer: <b>Chapters 8 &amp; 16</b>	
8	Friday 19 <sup>th</sup> September 2014  9am in A114	<b>*Making Music Together: Modelling an Integration of Practice:</b> <i>What is musical learning? Is it different in the classroom from an instrumental lesson? Or is it the same? What is "active music making" (Ofsted, 2012)? TIL support.</i>	
		<b>Essential Reading</b> (please discuss using the Moodle Forum): Philpott, C. & Spruce, G. (eds.), (2007), <i>Learning to teach music in the secondary school</i> , SECOND EDITION London: RoutledgeFalmer: <b>Chapters 3 &amp; 7</b>	
9	Friday 26 <sup>th</sup> September 2014  9am in A114	<b>Patterns &amp; Places: Exploring Musical Textures:</b> <i>Why teach World music?</i> <i>What is the point of teaching notation at Key Stage 3?</i> <i>Numeracy? How about a logical "entry point" (Gardner, 1991) to plan for musical learning?</i> <i>How can we ensure we are being inclusive?</i>	
		<b>Essential Reading</b> (please discuss using the Moodle Forum):	



		Philpott, C. & Spruce, G. (eds.), (2007), <i>Learning to teach music in the secondary school</i> , SECOND EDITION London: RoutledgeFalmer: <b>Chapters 4 &amp; 14</b>	
10	Friday 3 <sup>rd</sup> October 2014  9am in A114	<b>*Instrumental Teaching:</b> <i>Group Teaching.</i>	<b>*Music &amp; Meaning: Engaging Contexts for Making Music:</b> <i>How could you model composing at Key Stage 3? How about a narrative "entry point" (Gardner, 1991)? How do we explain in a musical classroom? What questions might we use to promote musical learning? RST support.</i>
		<b>Essential Reading</b> (please discuss using the Moodle Forum): Philpott, C. & Spruce, G. (eds.), (2007), <i>Learning to teach music in the secondary school</i> , SECOND EDITION London: RoutledgeFalmer: <b>Chapters 9 &amp; 12</b>	
11	Friday 10 <sup>th</sup> October 2014  9am in A114	<b>Singing:</b> <i>How can we support singing in a classroom? Why should people sing? Ideas from a national expert!</i>	
		<b>Essential Reading</b> (please discuss using the Moodle Forum): Philpott, C. & Spruce, G. (eds.), (2007), <i>Learning to teach music in the secondary school</i> , SECOND EDITION. London: RoutledgeFalmer: <b>Chapter 17 &amp; 18</b>	
12	Friday 17 <sup>th</sup> October 2014  9am in A114	<b>*Links &amp; Legends: Personalising Music Making:</b> <i>How can we motivate and engage our pupils at KS3? What are the differences between informal, non-formal and formal learning? What approaches should we use in a music classroom? Why?</i>	
		<b>Essential Reading</b> (please discuss using the Moodle Forum): Philpott, C. & Spruce, G. (eds.), (2007), <i>Learning to teach music in the secondary school</i> , SECOND EDITION. London: RoutledgeFalmer: <b>Chapter 10 &amp; 13</b>	
13	Friday 24 <sup>th</sup> October 2014  9am in A114	<b>*Instrumental Teaching:</b> <i>Improvisation.</i>	<b>*Choices and Changes: Music after Key Stage 3:</b> <i>Why do so few pupils take music after Key Stage 3? Is this an issue? What are the syllabus choices after KS3? How do we choose the right one?</i>
		<b>Essential Reading</b> (please discuss using the Moodle Forum): Philpott, C. & Spruce, G. (eds.), (2007), <i>Learning to teach music in the secondary school</i> , SECOND EDITION. London: RoutledgeFalmer: <b>Chapter 5 &amp; 6</b>	

[Return to Section D Contents](#)

## PGCE Secondary

### Science Workshops 2014-2015 (subject to alteration)

Autumn Term

BCU Wk	Date	Venue	Module EDU6013 (Rationale for Subject Teaching)
6	Friday 5 <sup>th</sup> September am + pm	BCU 113b	What is Science? Scientific Worldviews - philosophy and history
7	Thursday 11 <sup>th</sup> September am + pm	BCU 113b	Why do practical work in science education?
7	Friday 12 <sup>th</sup> September am + pm	Broadway School	Teaching Forces
8	Monday 15 <sup>th</sup> September pm only	BCU 113b	Science pedagogy Teaching models scientific method and key scientists
8	Friday 19 <sup>th</sup> September am + pm	Broadway School	Teaching Particles
9	Monday 22 <sup>nd</sup> September pm only	BCU 113b	Effective lessons in science
9	Friday 26 <sup>th</sup> September am + pm	Broadway School	Teaching Energy
10	Monday 29 <sup>th</sup> September pm only	BCU 113b	Effective teaching and learning in science
10	Friday 3 <sup>rd</sup> October am + pm	Broadway School	Teaching Geological processes
11	Monday 6 <sup>th</sup> October pm only	BCU 113b	Assessment in science part 1
11	Friday 10 <sup>th</sup> October am + pm	Broadway School	Teaching 'How science works' – scientific processes and enquiry
12	Monday 13 <sup>th</sup> October pm only	BCU 113b	Dealing with misconceptions in science
12	Friday 17 <sup>th</sup> October am + pm	Broadway School	Safety in science – risk assessments and the more dangerous practicals
13	Monday 20 <sup>th</sup> October pm only	BCU 113b	Differentiation techniques in science
13	Friday 24 <sup>th</sup> October am + pm	Broadway school	Teaching Cells

18	Friday 29 <sup>th</sup> November	BCU 113b	School Experience Review
----	-------------------------------------	----------	--------------------------

### Spring Term

<b>BCU Wk</b>	<b>Date</b>	<b>Venue</b>	<b>Module EDU6222 / EDU7116 (Subject Pedagogy)</b>	
24	Friday 9 <sup>th</sup> January am + pm	University of Birmingham	ASE Conference	
25	Friday 16 <sup>th</sup> January am + pm	Broadway School	Materials science IOM3	
26	Monday 19 <sup>th</sup> January am + pm	BCU 113b	Assessment in science part 2	
26	Friday 23 <sup>rd</sup> January am + pm	Broadway School	Teaching Electricity and Magnetism	Teaching Chemical Reactions
27	Monday 26 <sup>th</sup> January am + pm	BCU 113b	Teaching Human Biology	
27	Friday 30 <sup>th</sup> January am + pm	Broadway School	Teaching Waves and Radiation	Teaching Materials
28	Monday 2 <sup>nd</sup> February am + pm	BCU 113b	Literacy in science	
28	Friday 6 <sup>th</sup> February am + pm	Broadway School	Teaching Mechanics	Teaching Organic chemistry
29	Friday 13 <sup>h</sup> February am + pm	Broadway School	Teaching Atomic Physics and Space	Teaching Stoichiometry and Environmental chemistry

34	Friday 13 <sup>th</sup> March am + pm	BCU 113b	School Experience Review
----	---	----------	--------------------------

41	Tuesday 5 <sup>th</sup> May am + pm	BCU 113b	School Experience Review
----	---	----------	--------------------------

[Return to Section D Contents](#)